

County: 62

# RMS Interchange Information

Print Form

Bureau of Maintenance & Operations  
Asset Management Division



Interchange Number: 8001

Interchange Name: MARIANNE INT

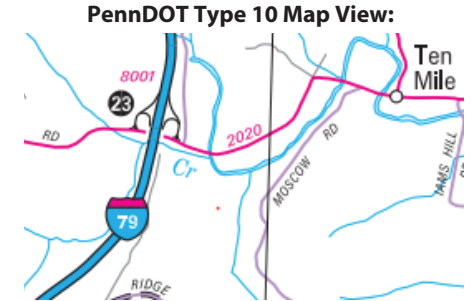
Intersecting SR's: I-79 & SR 2020 Ten Mile Rd

Ramp Segment Number and Ramp Segment Length Information:

Segment	Length	Segment	Length	Segment	Length	Segment	Length
0500	0895						
0510	0950						
0750	0835						
0760	1000						

Primary Route Interchange Exit Number: 23

Secondary Route Interchange Exit Number



Feedback

250 feet 50 m

© Vexcel Imaging, © 2022 TomTom

© 2022 Microsoft

Last Date Modified: Jul 7, 2022

County: 62

# RMS Interchange Information

Bureau of Maintenance & Operations  
Asset Management Division

Print Form



Interchange Number: 8002

Interchange Name: WEST ALEXANDER INT

Intersecting SR's: I-70 & SR 3023 Old Brick Rd

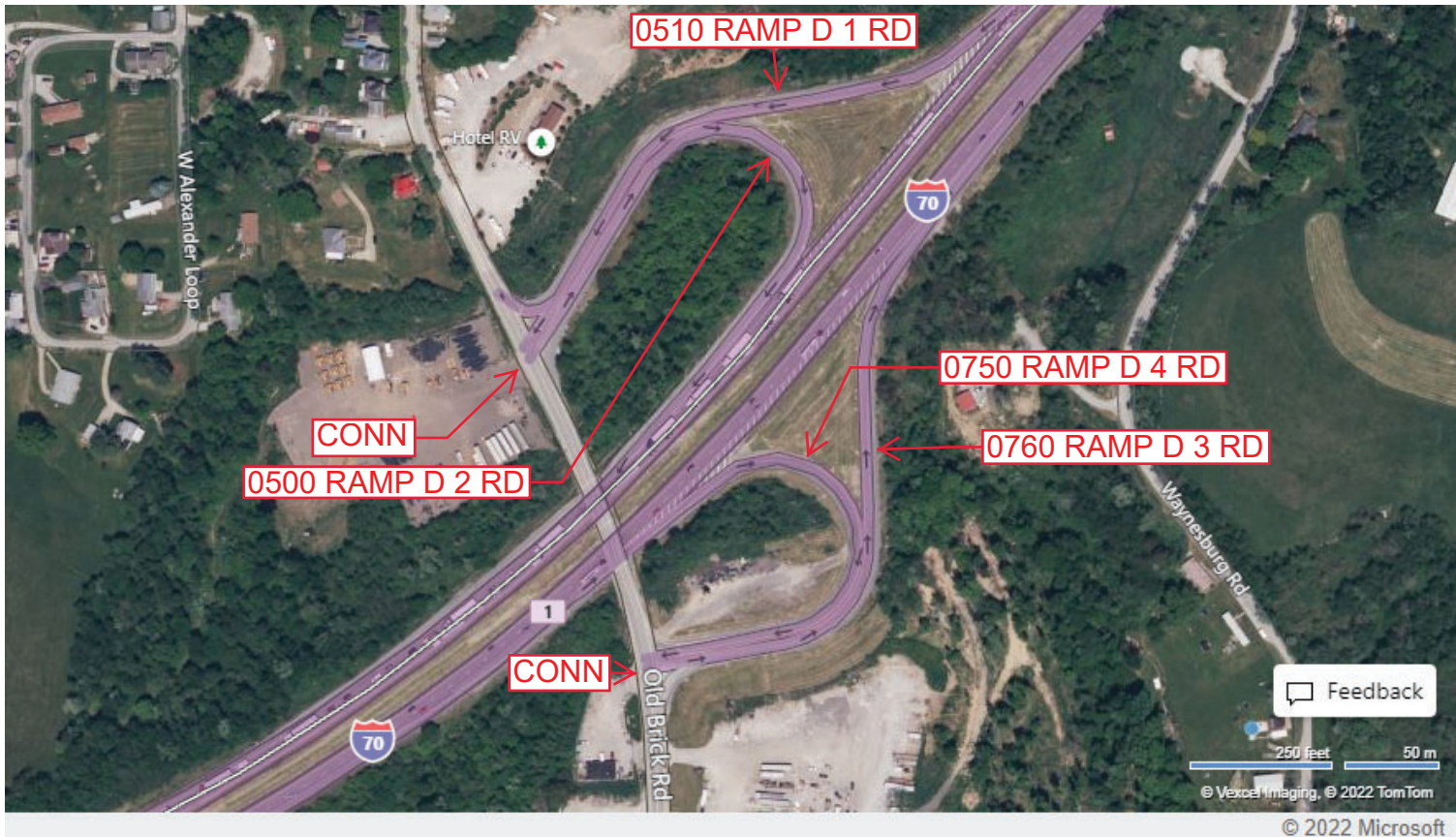
Ramp Segment Number and Ramp Segment Length Information:

Segment	Length	Segment	Length	Segment	Length	Segment	Length
0500	0868						
0510	0995						
0750	0805						
0760	0990						

Primary Route Interchange Exit Number: 1

Secondary Route Interchange Exit Number:

PennDOT Type 10 Map View:



Last Date Modified: Jul 7, 2022

County: 62

# RMS Interchange Information

Print Form

Bureau of Maintenance & Operations  
Asset Management Division



Interchange Number: 8005

Interchange Name: HARTS MILL INT

Intersecting SR's: I-79 & US 19 Amity Ridge Rd

Ramp Segment Number and Ramp Segment Length Information:

Segment	Length	Segment	Length	Segment	Length	Segment	Length
0250	0975						
0500	0865						
0750	0505						
0760	0665						

Primary Route Interchange Exit Number: 30

Secondary Route Interchange Exit Number

PennDOT Type 10 Map View:



Feedback

250 feet 50 m  
© Vexcel Imaging, © 2022 TomTom

© 2022 Microsoft

Last Date Modified: Jul 8, 2022

County: 62

# RMS Interchange Information

Print Form

Interchange Number: 8006

Bureau of Maintenance & Operations  
Asset Management Division



Interchange Name: CLAYSVILLE INT

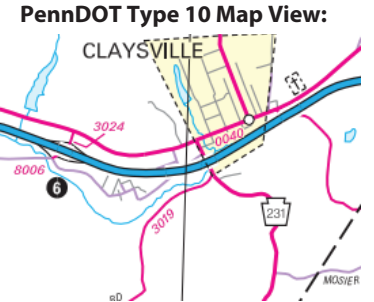
Intersecting SR's: I-70, SR 3024 Old National Pk & T308 Donegal Av

Ramp Segment Number and Ramp Segment Length Information:

Segment	Length	Segment	Length	Segment	Length	Segment	Length
0010	0356						
0250	0325						
0500	0544						
0750	0737						

Primary Route Interchange Exit Number: 6

Secondary Route Interchange Exit Number



Last Date Modified:

Jul 8, 2022

County: 62

# RMS Interchange Information

Print Form

Interchange Number: 8008

Bureau of Maintenance & Operations  
Roadway Management Division



Interchange Name: TAYLORSTOWN

Intersecting SR's: I-70, SR 3008 Jolly School Rd & SR 3030 East Buffalo Rd

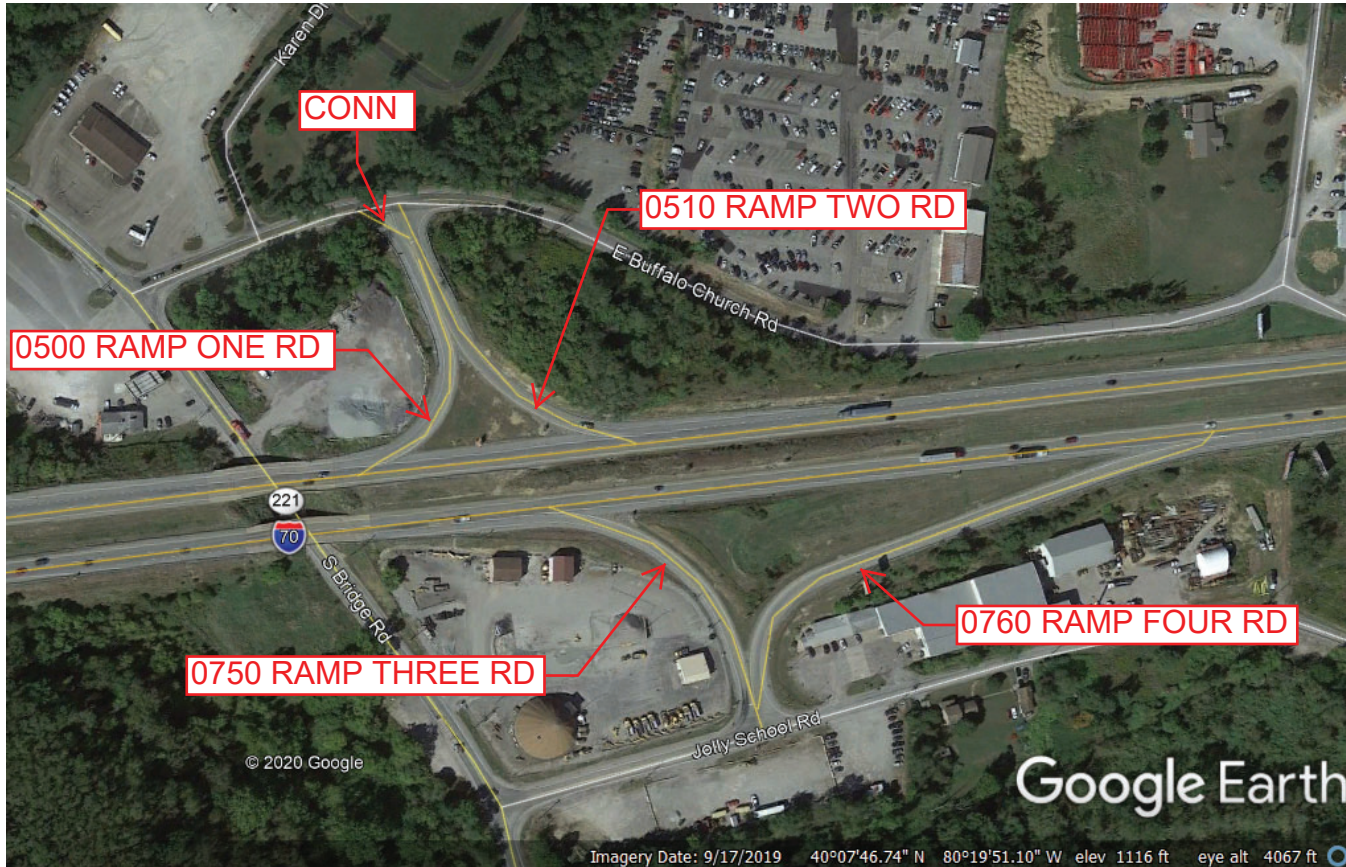
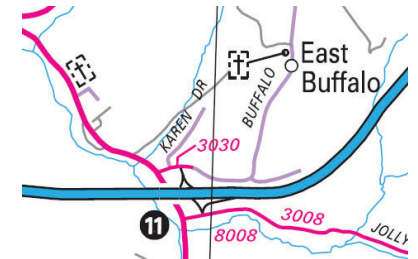
Ramp Segment Number and Ramp Segment Length Information:

Segment	Length	Segment	Length	Segment	Length	Segment	Length
0500	0414						
0510	0442						
0750	0436						
0760	0801						

Primary Route Interchange Exit Number: 11

Secondary Route Interchange Exit Number

PennDOT Type 10 Map View:



Last Date Modified: Jul 30, 2020

County: 62

# RMS Interchange Information

Print Form

Bureau of Maintenance & Operations  
Asset Management Division



Interchange Number: 8009

Interchange Name: LABORATORY INT

Intersecting SR's: I-79 & US 40 National Pk

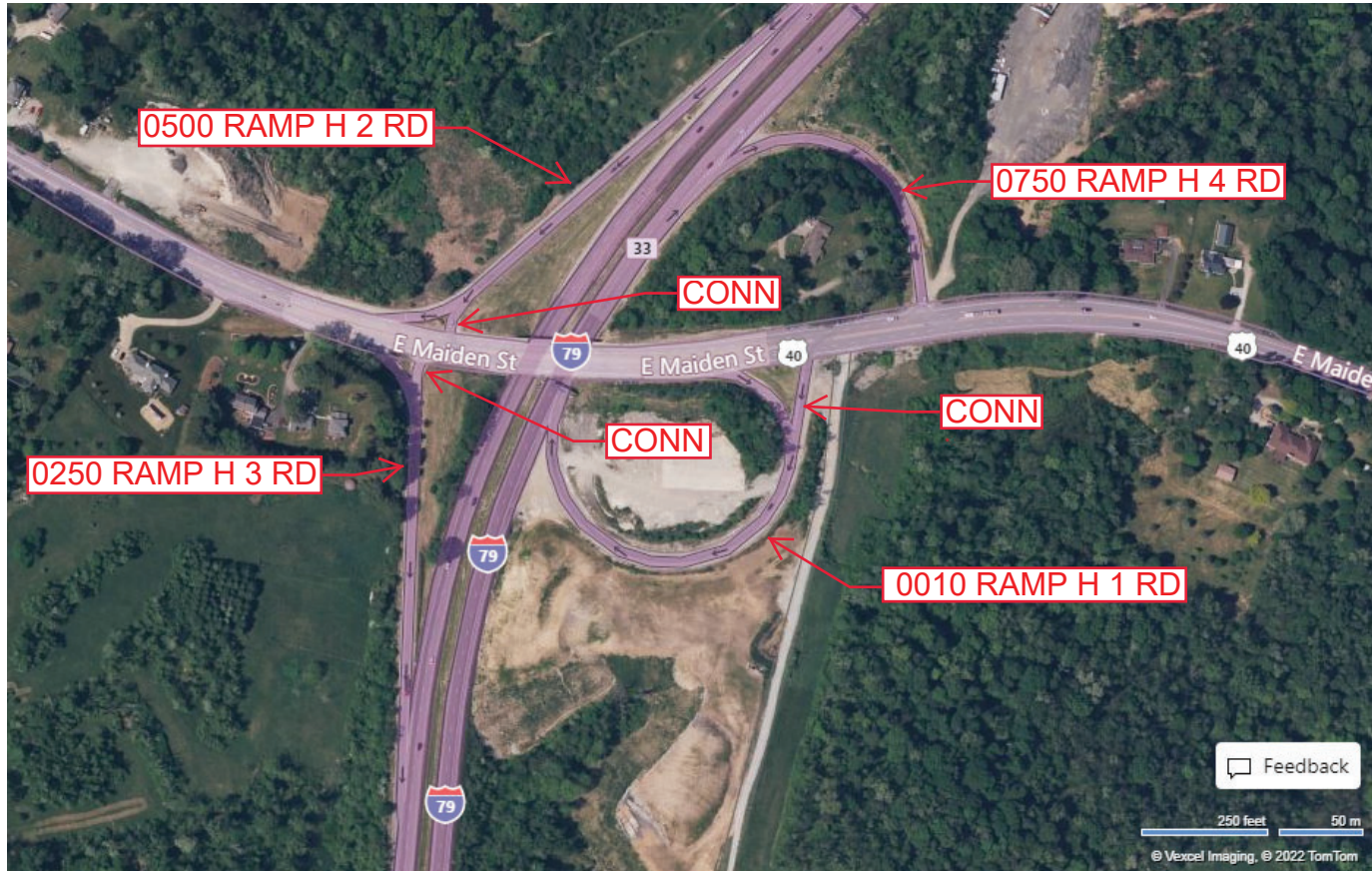
Ramp Segment Number and Ramp Segment Length Information:

Segment	Length	Segment	Length	Segment	Length	Segment	Length
0010	0963						
0250	0720						
0500	0819						
0750	0556						

Primary Route Interchange Exit Number: 33

Secondary Route Interchange Exit Number

PennDOT Type 10 Map View:



Feedback

250 feet 50 m  
© Vexcel Imaging, © 2022 TomTom

© 2022 Microsoft

Last Date Modified: Jul 11, 2022

County: **62**

# RMS Interchange Information

Print Form

Interchange Number: **8010**

Bureau of Maintenance & Operations  
Asset Management Division



Interchange Name: **CHESTNUT STREET INT**

Intersecting SR's: **I-70 & US 40 Chestnut St**

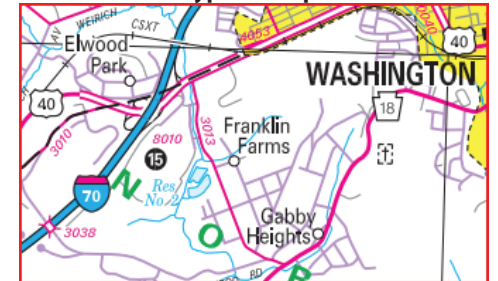
Ramp Segment Number and Ramp Segment Length Information:

Segment	Length	Segment	Length	Segment	Length	Segment	Length
<b>0010</b>	<b>0505</b>						
<b>0252</b>	<b>0700</b>						
<b>0262</b>	<b>0300</b>						
<b>0500</b>	<b>0775</b>						
<b>0750</b>	<b>0750</b>						

Primary Route Interchange Exit Number: **15**

Secondary Route Interchange Exit Number

PennDOT Type 10 Map View:



Privacy Choices Consumer Health Privacy

Last Date Modified:

Feb 19, 2025

County: 62

# RMS Interchange Information

Print Form

Bureau of Maintenance & Operations  
Asset Management Division



Interchange Number: 8011

Interchange Name: SOUTH JUNCTION INT

Intersecting SR's: I-70 & I-79

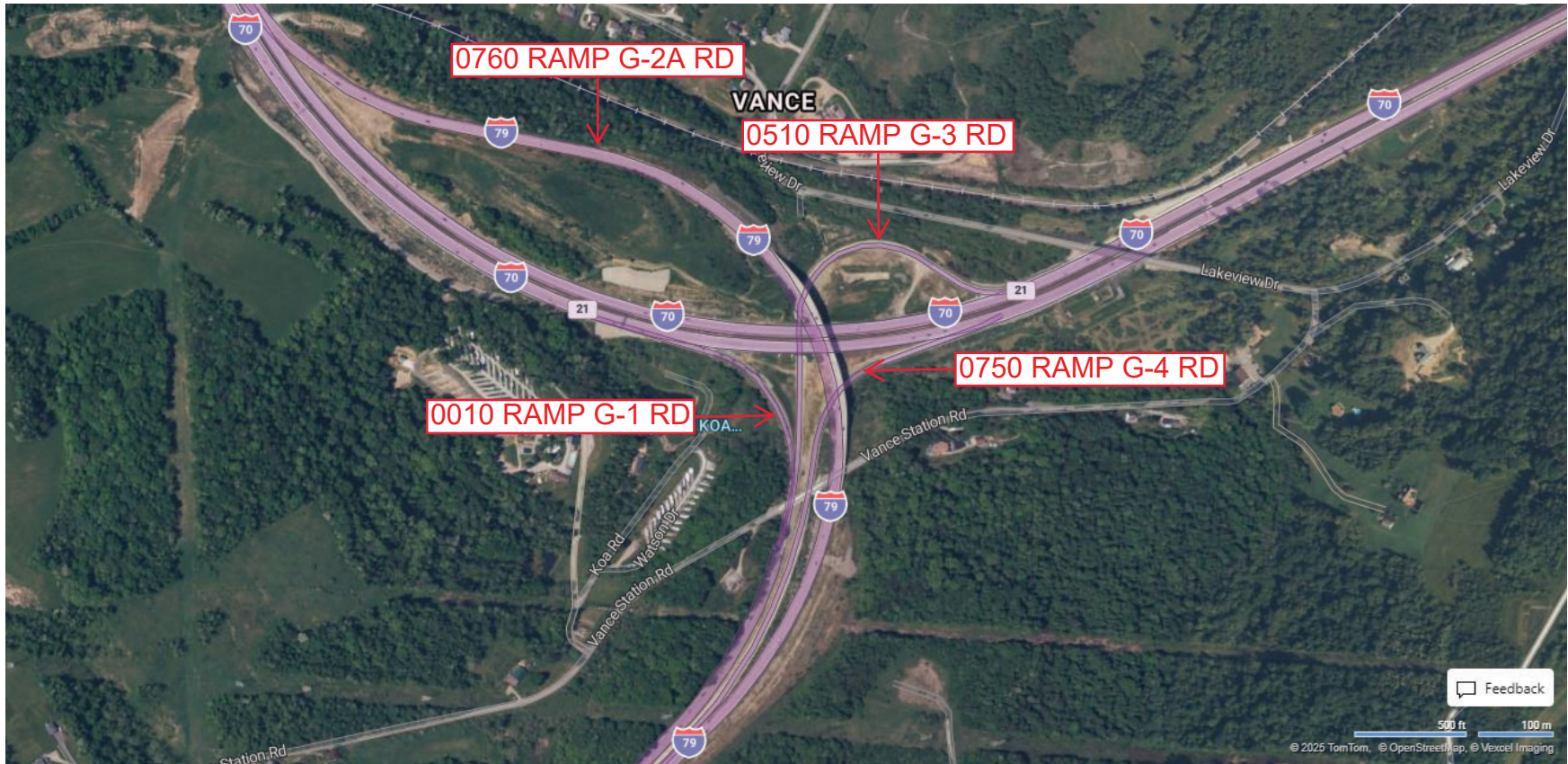
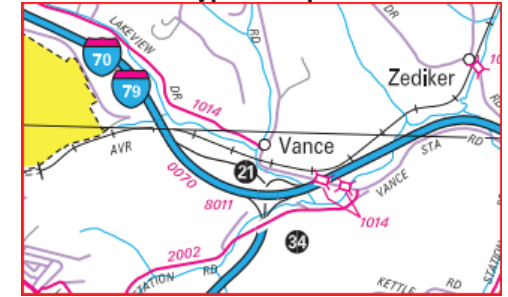
Ramp Segment Number and Ramp Segment Length Information:

Segment	Length	Segment	Length	Segment	Length	Segment	Length
0010	0605						
0510	1160						
0750	2250						
0760	4975						

Primary Route Interchange Exit Number: 21

Secondary Route Interchange Exit Number: 34

PennDOT Type 10 Map View:



Privacy Choices Consumer Health Privacy

© 2025 TomTom, © OpenStreetMap, © Vexcel Imaging

© 2025 Microsoft

Last Date Modified:

Feb 14, 2025



County: 62

# RMS Interchange Information

Bureau of Maintenance & Operations  
Asset Management Division

Print Form



Interchange Number: 8012

Interchange Name: JESSOP PLACE INT

Intersecting SR's: I-70 & T973 Sheffield St

Ramp Segment Number and Ramp Segment Length Information:

Segment	Length	Segment	Length	Segment	Length	Segment	Length
0010	0501						
0250	0386						
0500	0505						
0750	0622						

Primary Route Interchange Exit Number: 16

Secondary Route Interchange Exit Number

PennDOT Type 10 Map View:



Feedback  
250 feet 50 m  
© Vexcel Imaging, © 2022 TomTom  
© 2022 Microsoft

Last Date Modified: Jul 11, 2022

County: 62

# RMS Interchange Information

Print Form

Interchange Number: 8013

Bureau of Maintenance & Operations  
Asset Management Division



Interchange Name: LOCUST AVENUE INT

Intersecting SR's: I-79 & SR 1009 Locust Av

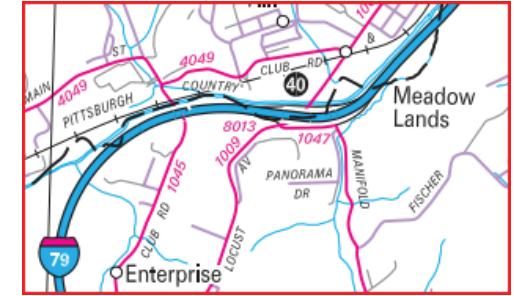
Ramp Segment Number and Ramp Segment Length Information:

Segment	Length	Segment	Length	Segment	Length	Segment	Length
0010	0425	0762	1100				
0250	0796						
0500	0735						
0510	0595						
0752	0985						

Primary Route Interchange Exit Number: 40

Secondary Route Interchange Exit Number

PennDOT Type 10 Map View:



Last Date Modified: Jan 22, 2025

County: 62

# RMS Interchange Information

Print Form

Interchange Number: **8014**

Bureau of Maintenance & Operations  
Asset Management Division



Interchange Name: **JEFFERSON AVE INT**

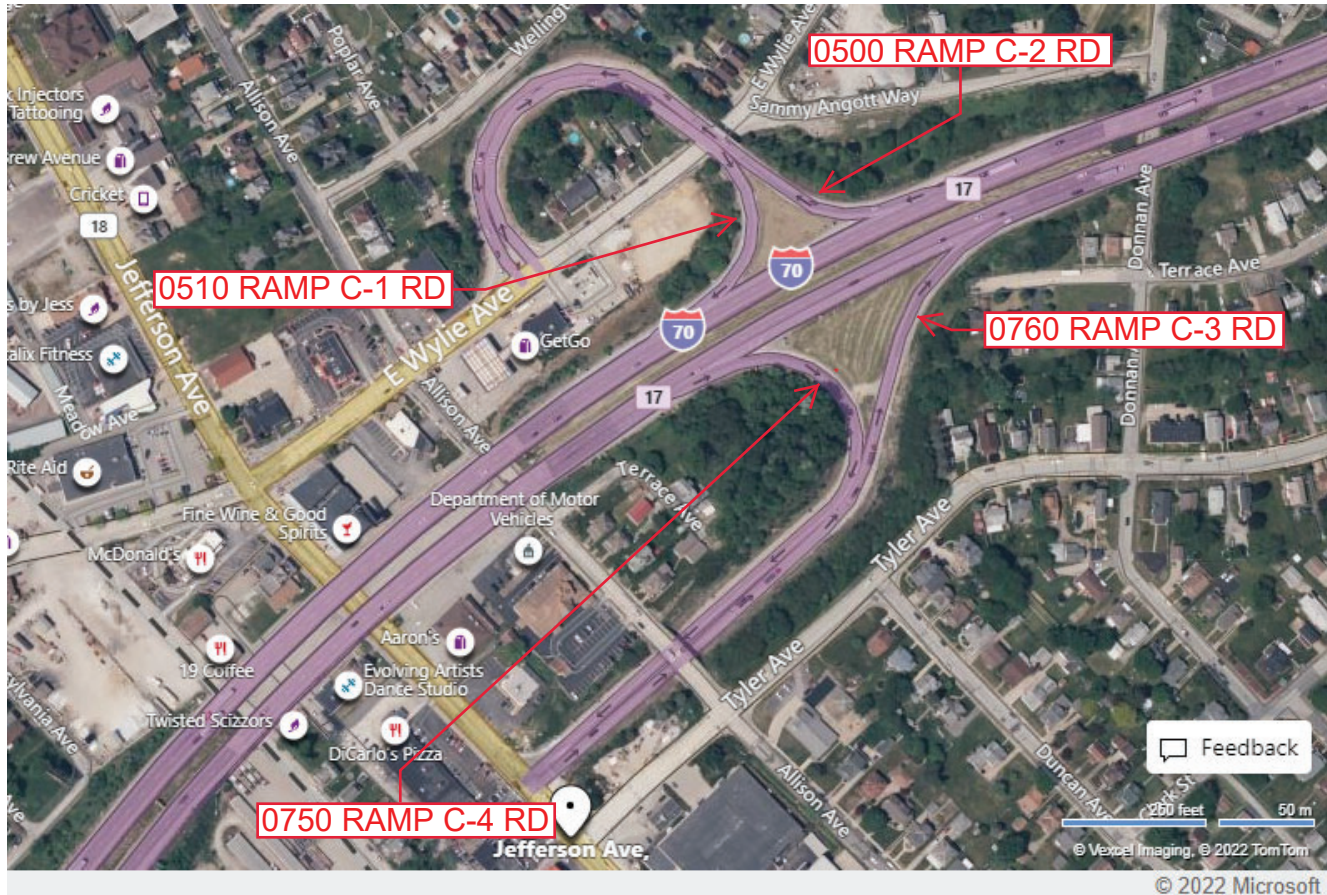
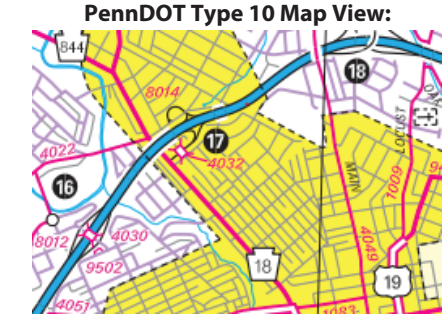
Intersecting SR's: **I-70, PA 18 Jefferson Ave & CITY East Wylie Ave**

Ramp Segment Number and Ramp Segment Length Information:

Segment	Length	Segment	Length	Segment	Length	Segment	Length
<b>0500</b>	<b>1065</b>						
<b>0510</b>	<b>0943</b>						
<b>0750</b>	<b>1094</b>						
<b>0760</b>	<b>1256</b>						

Primary Route Interchange Exit Number: **17**

Secondary Route Interchange Exit Number



Feedback

260 feet 50 m

© Vexcel Imaging, © 2022 TomTom

© 2022 Microsoft

Last Date Modified:

Jul 15, 2022

County: 62

# RMS Interchange Information

Print Form

Bureau of Maintenance & Operations  
Asset Management Division



Interchange Number: 8015

Interchange Name: MEADOWLANDS INT

Intersecting SR's: I-79 SR 1041 Race Track Rd

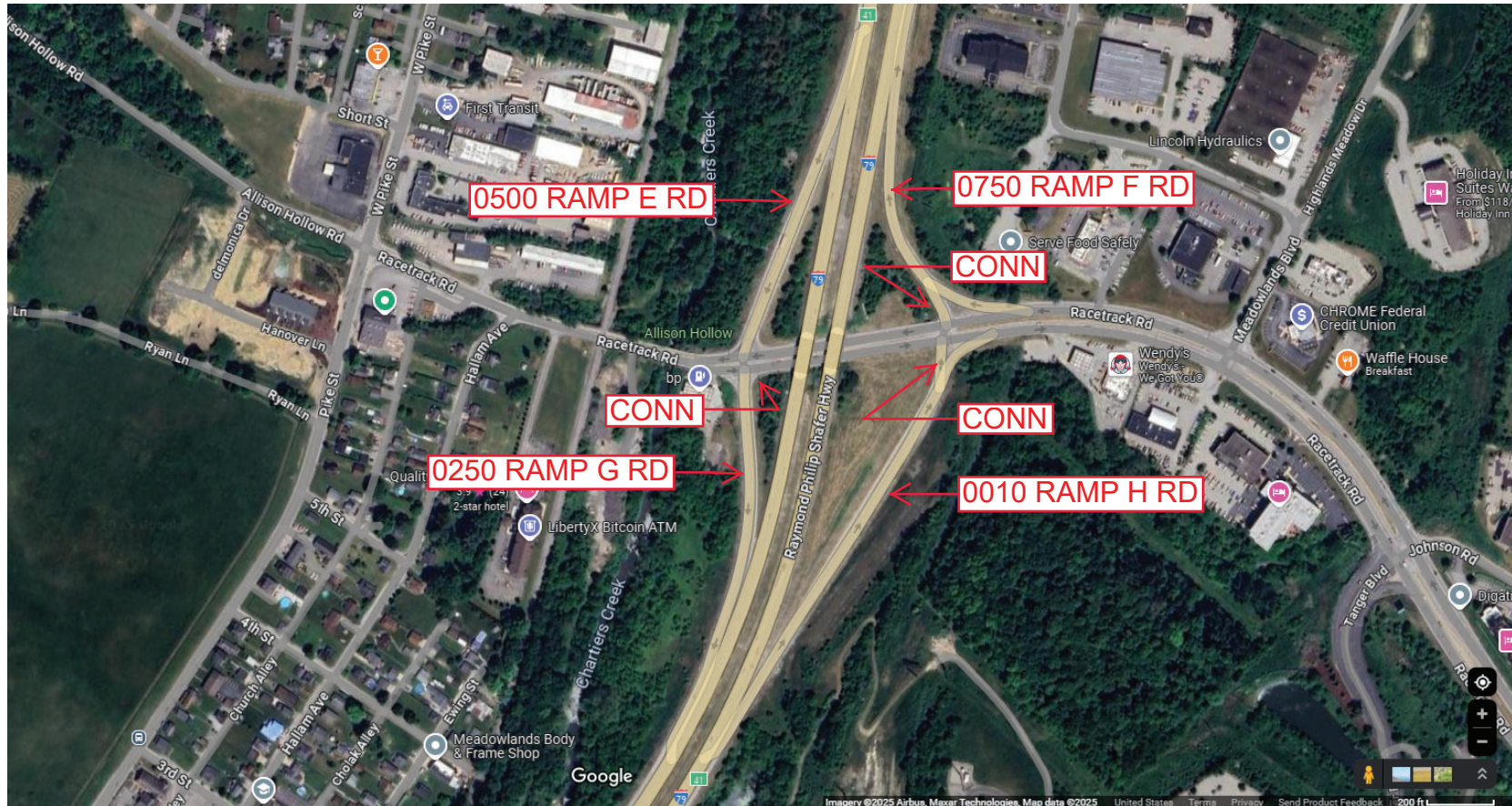
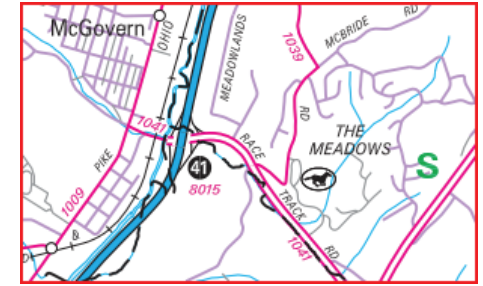
Ramp Segment Number and Ramp Segment Length Information:

Segment	Length	Segment	Length	Segment	Length	Segment	Length
0010	1185						
0250	0495						
0500	0691						
0750	0730						

Primary Route Interchange Exit Number: 41

Secondary Route Interchange Exit Number

PennDOT Type 10 Map View:



Last Date Modified: Jan 22, 2025

County: 62

# RMS Interchange Information

Print Form

Bureau of Maintenance & Operations  
Asset Management Division



Interchange Number: 8016

Interchange Name: NORTH JUNCTION INT

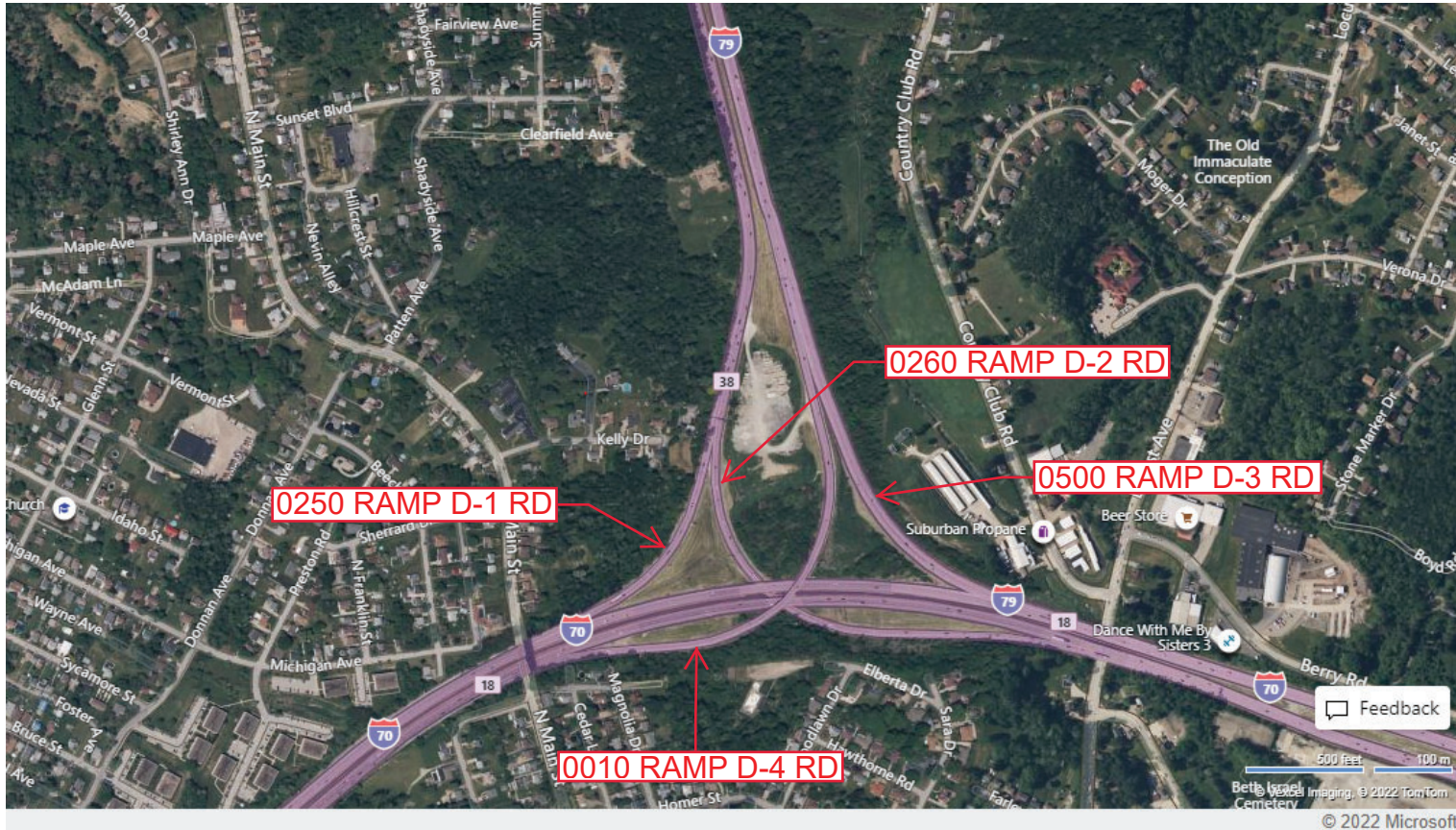
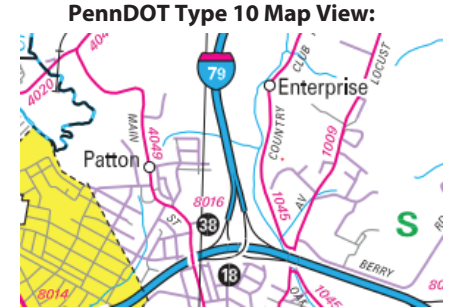
Intersecting SR's: I-70 & I-79

Ramp Segment Number and Ramp Segment Length Information:

Segment	Length	Segment	Length	Segment	Length	Segment	Length
0010	2050						
0250	0880						
0260	1805						
0500	1259						

Primary Route Interchange Exit Number: 18

Secondary Route Interchange Exit Number: 38



Last Date Modified:

Jul 15, 2022

County: 62

# RMS Interchange Information

Print Form

Bureau of Maintenance & Operations  
Asset Management Division



Interchange Number: 8017

Interchange Name: HOUSTON INT

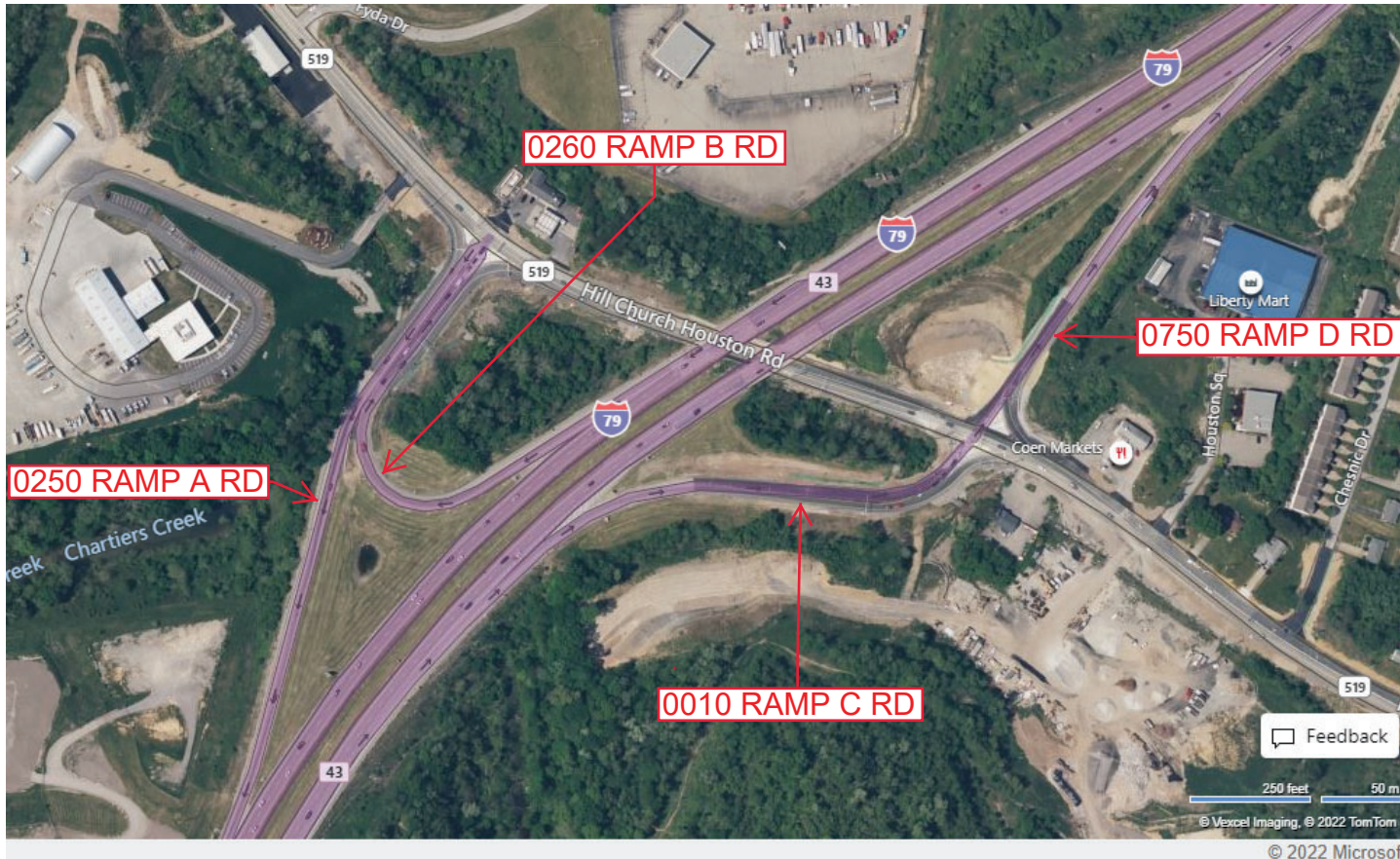
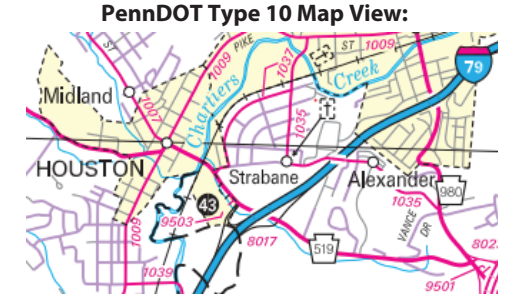
Intersecting SR's: I-79 & PA 519 Washington Rd

Ramp Segment Number and Ramp Segment Length Information:

Segment	Length	Segment	Length	Segment	Length	Segment	Length
0010	0875						
0250	1330						
0260	0966						
0750	1001						

Primary Route Interchange Exit Number: 43

Secondary Route Interchange Exit Number



Last Date Modified: Jul 15, 2022

County: 62

# RMS Interchange Information

Print Form

Interchange Number: 8018

Bureau of Maintenance & Operations  
Asset Management Division



Interchange Name: MURLTAND AVE INT

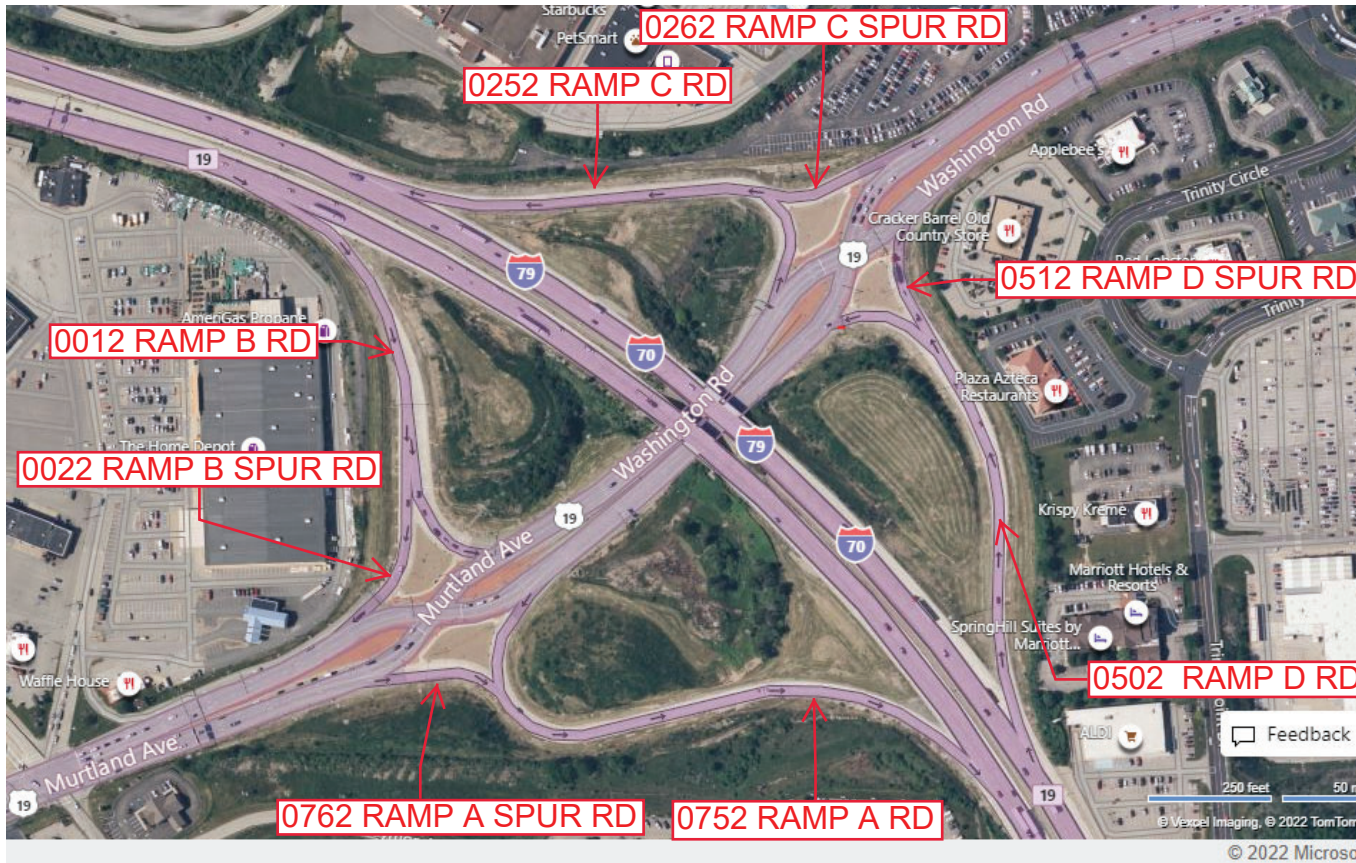
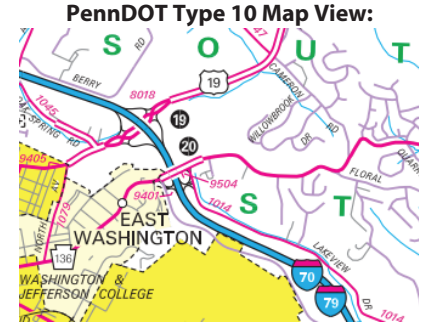
Intersecting SR's: I-70 & US 19 Washington Rd

Ramp Segment Number and Ramp Segment Length Information:

Segment	Length	Segment	Length	Segment	Length	Segment	Length
0012	0720	0512	0140				
0022	0175	0752	1150				
0252	0830	0762	0180				
0262	0160						
0502	0935						

Primary Route Interchange Exit Number: 19

Secondary Route Interchange Exit Number



Last Date Modified:

Jul 18, 2022

County: 62

# RMS Interchange Information

Print Form

Bureau of Maintenance & Operations  
Asset Management Division



Interchange Number: 8019

Interchange Name: WEAVERTOWN INT

Intersecting SR's: I-79, SR 1025 Weavertown Rd & TWP Hook St

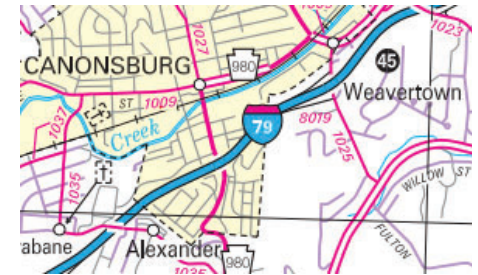
Ramp Segment Number and Ramp Segment Length Information:

Segment	Length	Segment	Length	Segment	Length	Segment	Length
0010	0460						
0250	0620						

Primary Route Interchange Exit Number: 45

Secondary Route Interchange Exit Number

PennDOT Type 10 Map View:



Last Date Modified: Jul 18, 2022



County: 62

# RMS Interchange Information

Bureau of Maintenance & Operations  
Asset Management Division

Print Form



Interchange Number: 8021

Interchange Name: CANONSBURG INT

Intersecting SR's: I-79 & SR 1023 McClelland Rd

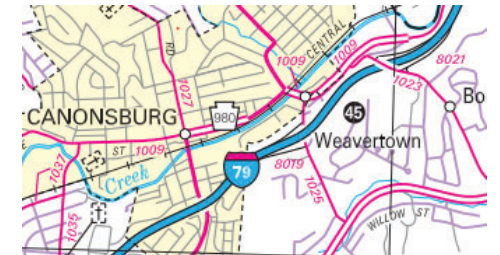
Ramp Segment Number and Ramp Segment Length Information:

Segment	Length	Segment	Length	Segment	Length	Segment	Length
0500	0680						
0750	0924						

Primary Route Interchange Exit Number: 45

Secondary Route Interchange Exit Number

PennDOT Type 10 Map View:



© 2022 Microsoft

Last Date Modified: Aug 8, 2022

County: 62

# RMS Interchange Information

Print Form

Interchange Number: 8022

Bureau of Maintenance & Operations  
Roadway Management Division



Interchange Name: EIGHTY FOUR

Intersecting SR's: I-70 & PA 519

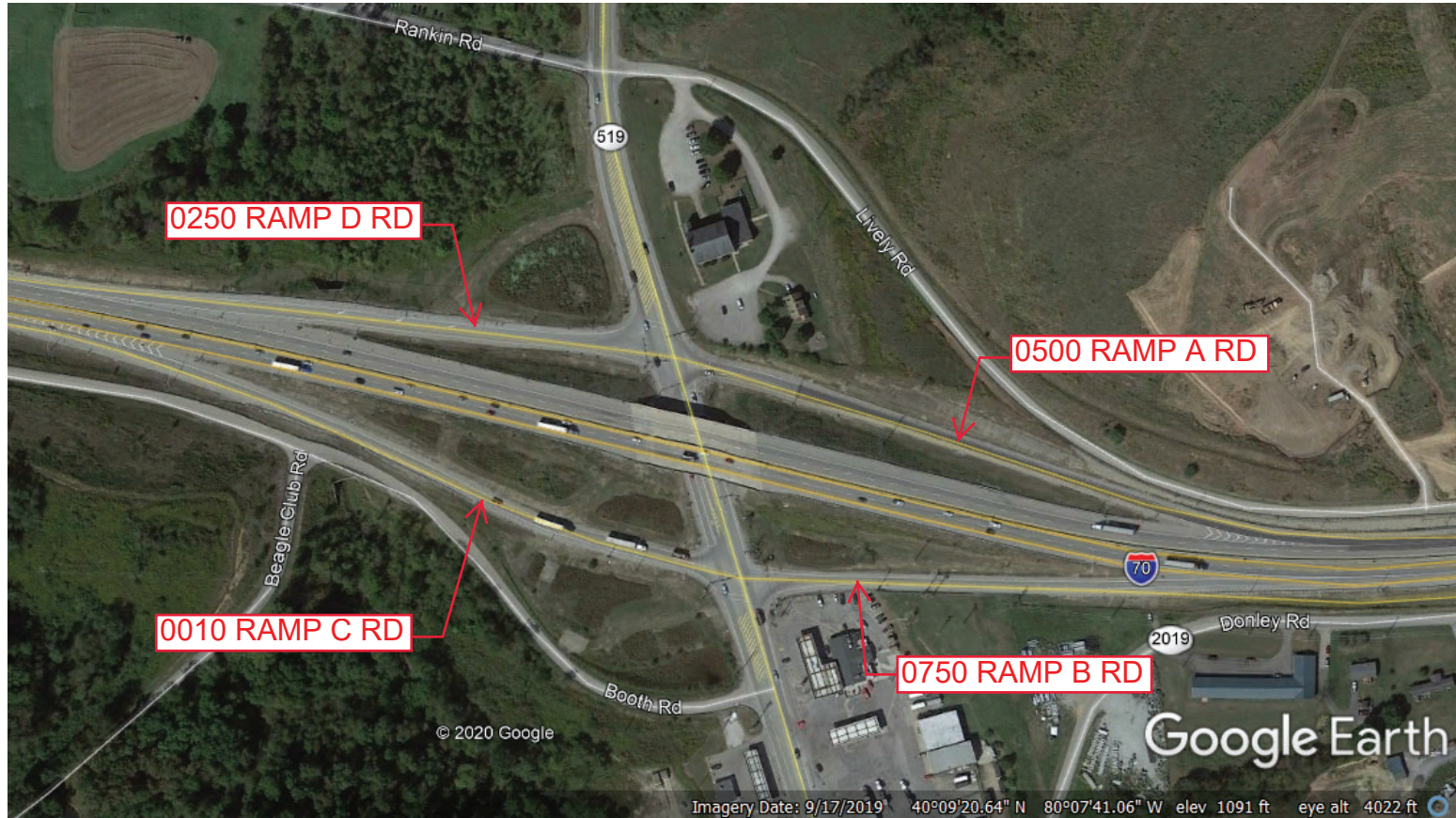
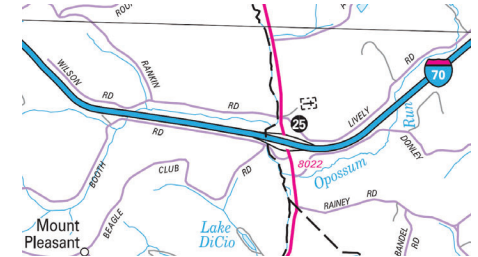
Ramp Segment Number and Ramp Segment Length Information:

Segment	Length	Segment	Length	Segment	Length	Segment	Length
0010	0985						
0250	0610						
0500	0900						
0750	0670						

Primary Route Interchange Exit Number: 25

Secondary Route Interchange Exit Number

PennDOT Type 10 Map View:



Last Date Modified: Jul 30, 2020

County: 62

# RMS Interchange Information

Print Form

Interchange Number: 8023

Bureau of Maintenance & Operations  
Asset Management Division



Interchange Name: HILL CHURCH INT

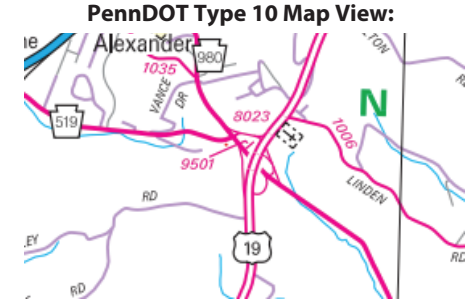
Intersecting SR's: US 19, PA 980 Washington Av & PA 519 Hill Church Rd

Ramp Segment Number and Ramp Segment Length Information:

Segment	Length	Segment	Length	Segment	Length	Segment	Length
0010	0715	0762	0270				
0250	0630	0772	0720				
0502	0820						
0512	0775						
0752	0949						

Primary Route Interchange Exit Number: 25

Secondary Route Interchange Exit Number



Last Date Modified: Aug 11, 2022

County: 62

# RMS Interchange Information

Print Form

Interchange Number: 8024

Bureau of Maintenance & Operations  
Asset Management Division



Interchange Name: DUNNINGSVILLE INT

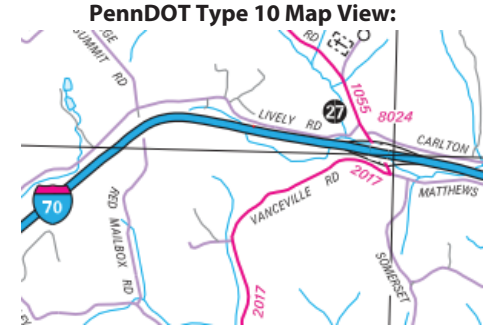
Intersecting SR's: I-70, SR 1055 Somerset Dr & SR 2017 Somerset Dr

Ramp Segment Number and Ramp Segment Length Information:

Segment	Length	Segment	Length	Segment	Length	Segment	Length
0010	0586						
0250	0548						
0500	0565						
0750	0493						

Primary Route Interchange Exit Number: 27

Secondary Route Interchange Exit Number



Last Date Modified: Aug 10, 2022

County: 62

# RMS Interchange Information

Print Form

Interchange Number: 8025

Bureau of Maintenance & Operations  
Asset Management Division



Interchange Name: DONORA INT

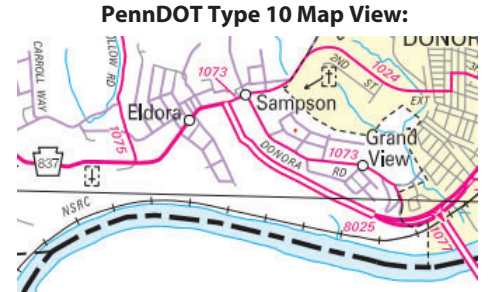
Intersecting SR's: PA 837 & SR 1077 Vance Del Cas Hw

Ramp Segment Number and Ramp Segment Length Information:

Segment	Length	Segment	Length	Segment	Length	Segment	Length
0250	0219						
0500	1035						

Primary Route Interchange Exit Number

Secondary Route Interchange Exit Number



Feedback

100 feet 25 m  
© 2022 TomTom, © Vexcel Imaging

© 2022 Microsoft

Last Date Modified:

Aug 10, 2022

County: 62

# RMS Interchange Information

Print Form

Interchange Number: 8026

Bureau of Maintenance & Operations  
Roadway Management Division



Interchange Name: KAMMERER

Intersecting SR's: I-70, T521 McIlvaine Rd & T828 McIlvaine Rd

Ramp Segment Number and Ramp Segment Length Information:

Segment	Length	Segment	Length	Segment	Length	Segment	Length
0010	0486						
0250	0552						
0500	0446						
0750	0475						

Primary Route Interchange Exit Number: 31

Secondary Route Interchange Exit Number:

PennDOT Type 10 Map View:



Last Date Modified: Jul 30, 2020

County: 62

# RMS Interchange Information

Print Form

Bureau of Maintenance & Operations  
Asset Management Division



Interchange Number: 8028

Interchange Name: GINGER HILL INT

Intersecting SR's: I-70, PA 917 (Pittsburgh Rd) & T509 (Meadow Dr)

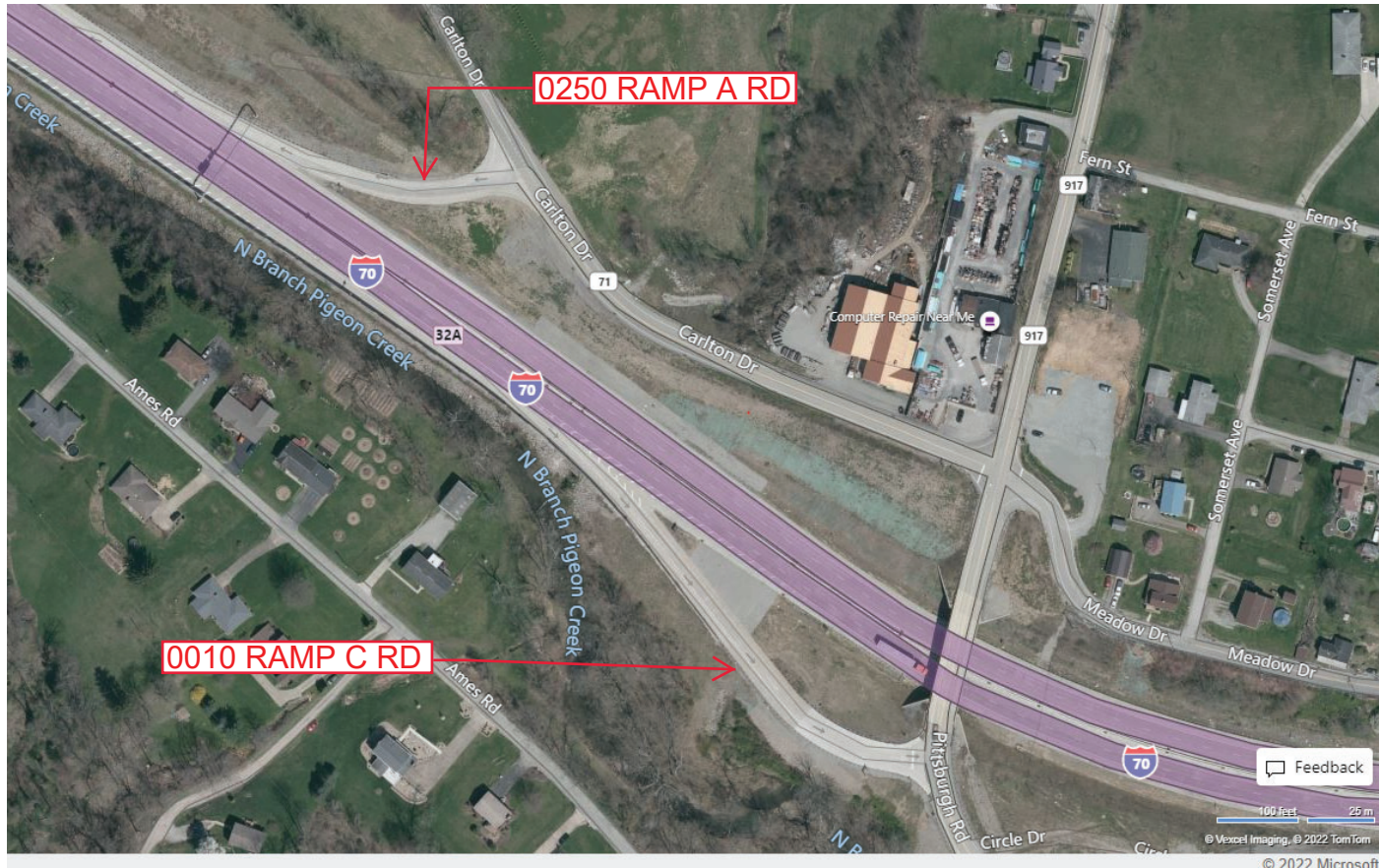
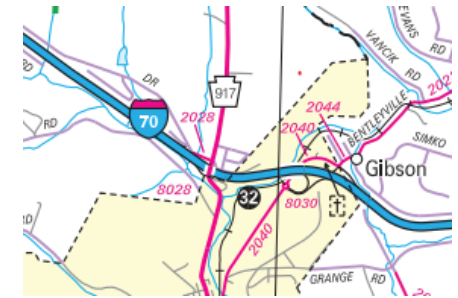
Ramp Segment Number and Ramp Segment Length Information:

Segment	Length	Segment	Length	Segment	Length	Segment	Length
0010	0500						
0250	0295						

Primary Route Interchange Exit Number: 32A

Secondary Route Interchange Exit Number

PennDOT Type 10 Map View:



Last Date Modified: Apr 29, 2022

County: 62

# RMS Interchange Information

Print Form

Interchange Number: 8030

Bureau of Maintenance & Operations  
Asset Management Division



Interchange Name: BENTLEYVILLE INT

Intersecting SR's: I-70, SR 2040 Wilson Rd & SR 2044 Gibson Rd

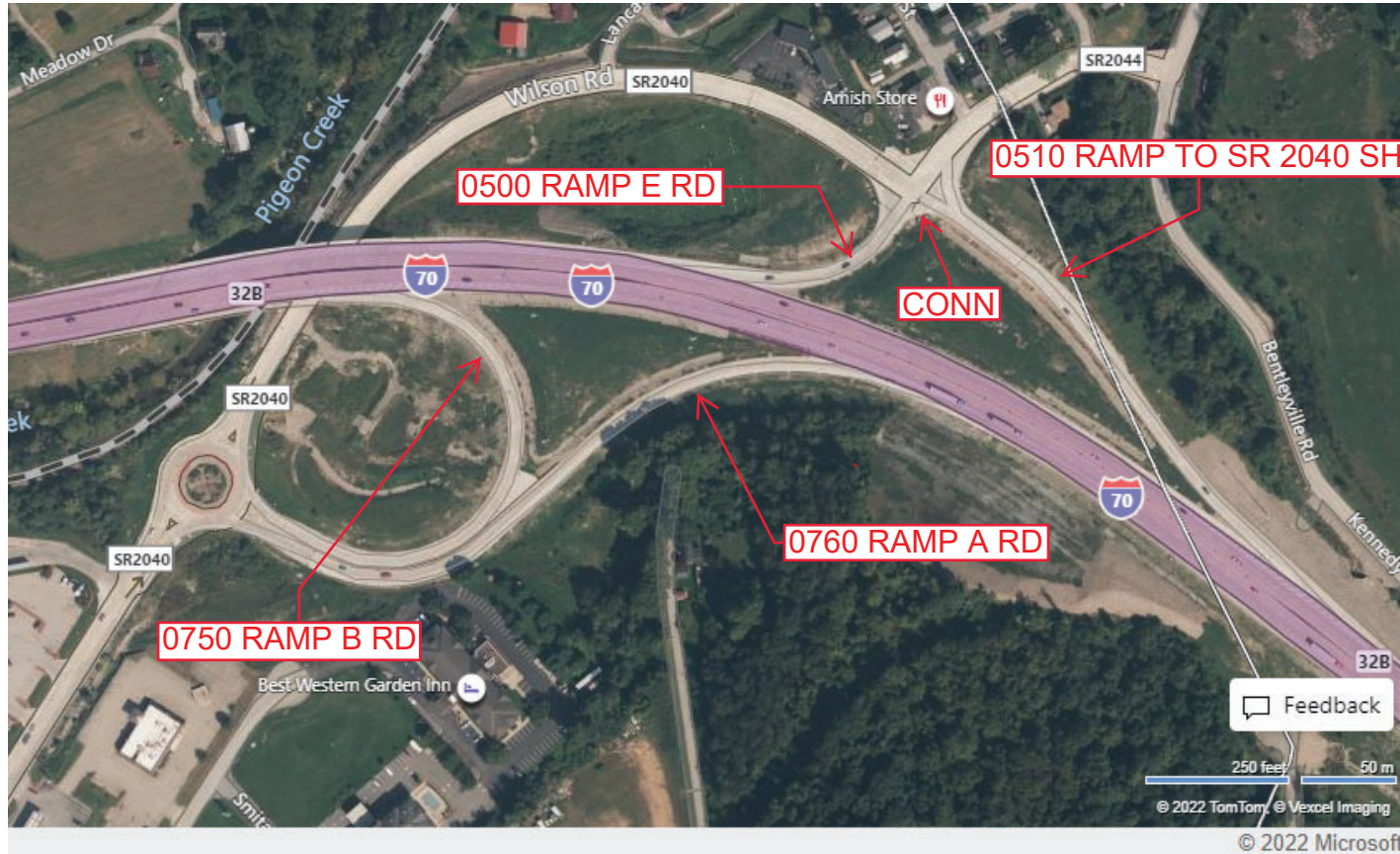
Ramp Segment Number and Ramp Segment Length Information:

Segment	Length	Segment	Length	Segment	Length	Segment	Length
0500	0300						
0510	0860						
0750	0960						
0760	1230						

Primary Route Interchange Exit Number: 32B

Secondary Route Interchange Exit Number

PennDOT Type 10 Map View:



Last Date Modified:

Aug 11, 2022



County: 62

# RMS Interchange Information

Print Form

Bureau of Maintenance & Operations  
Asset Management Division



Interchange Number: 8031

Interchange Name: SOUTHPOINTE INT

Intersecting SR's: I-79 & SR 1032 Southpointe Bl

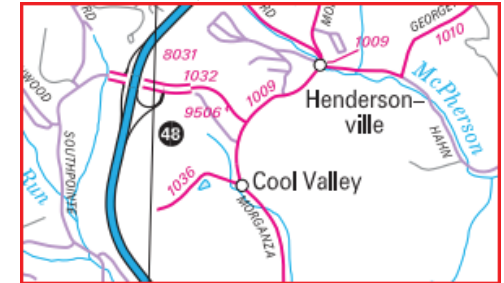
Ramp Segment Number and Ramp Segment Length Information:

Segment	Length	Segment	Length	Segment	Length	Segment	Length
0010	1585						
0020	1100						
0250	1165						
0500	1215						

Primary Route Interchange Exit Number: 48

Secondary Route Interchange Exit Number

PennDOT Type 10 Map View:



Privacy Choices Consumer Health Privacy

© 2025 Microsoft

Last Date Modified:

Feb 19, 2025

County: 62

# RMS Interchange Information

Print Form

Interchange Number: 8032

Bureau of Maintenance & Operations  
Asset Management Division



Interchange Name: CENTERVILLE INT

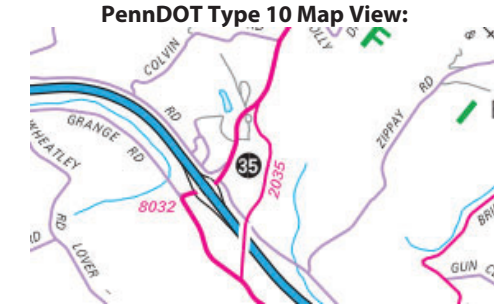
Intersecting SR's: I-70, PA 481 Scenic Dr & T616 Kennedy Rd

Ramp Segment Number and Ramp Segment Length Information:

Segment	Length	Segment	Length	Segment	Length	Segment	Length
0010	0570						
0250	0410						
0500	0595						
0750	1090						

Primary Route Interchange Exit Number: 35

Secondary Route Interchange Exit Number



Last Date Modified: Jan 15, 2025

County: 62

# RMS Interchange Information

Print Form

Interchange Number: 8034

Bureau of Maintenance & Operations  
Asset Management Division



Interchange Name: LOVER INT

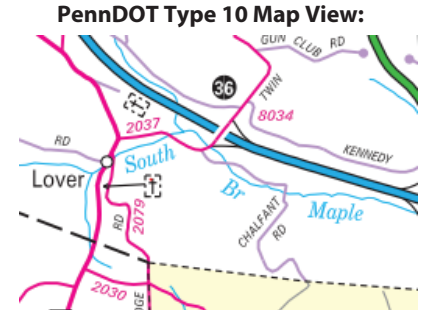
Intersecting SR's: I-70 & SR 2037 Twin Bridges Rd

Ramp Segment Number and Ramp Segment Length Information:

Segment	Length	Segment	Length	Segment	Length	Segment	Length
0500	0467						
0750	0502						

Primary Route Interchange Exit Number: 36

Secondary Route Interchange Exit Number



Feedback

100 feet 25 m  
© 2022 TomTom, © Vexcel Imaging

© 2022 Microsoft

Last Date Modified: Aug 11, 2022

County: **62**

# RMS Interchange Information

Print Form

Interchange Number: **8036**

Bureau of Maintenance & Operations  
Asset Management Division



Interchange Name: **SPEERS INT**

Intersecting SR's: **I-70 & SR 2027 Twilight Hollow Rd/Maple Dr**

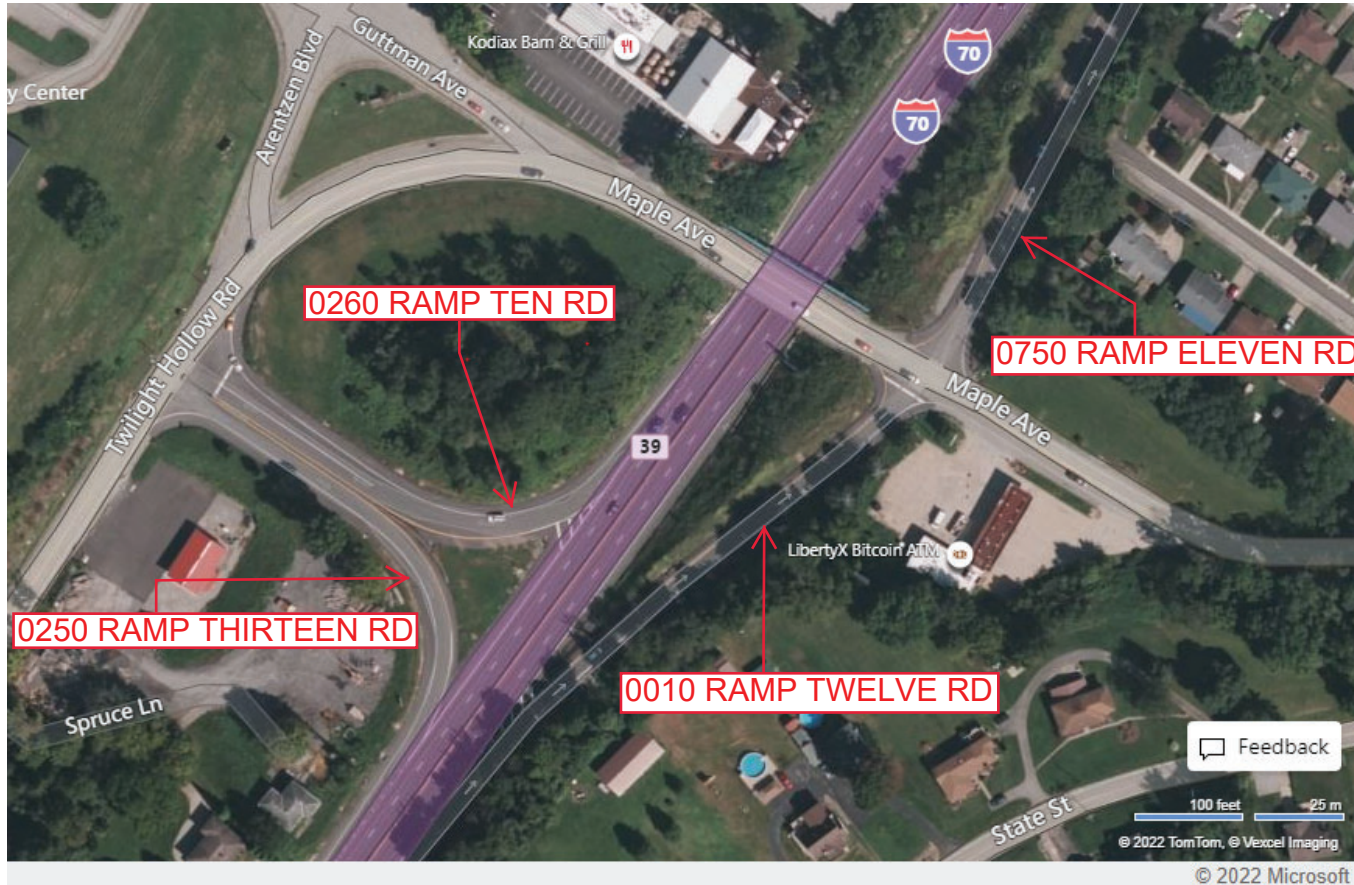
Ramp Segment Number and Ramp Segment Length Information:

Segment	Length	Segment	Length	Segment	Length	Segment	Length
<b>0010</b>	<b>0451</b>						
<b>0250</b>	<b>0390</b>						
<b>0260</b>	<b>0370</b>						
<b>0750</b>	<b>0603</b>						

Primary Route Interchange Exit Number: **39**

Secondary Route Interchange Exit Number:

PennDOT Type 10 Map View:



Feedback

100 feet 25 m

© 2022 TomTom, © Vexcel Imaging

© 2022 Microsoft

Last Date Modified:

Aug 11, 2022

County: 62

# RMS Interchange Information

Print Form

Interchange Number: 8042

Bureau of Maintenance & Operations  
Asset Management Division



Interchange Name: WEST BROWNSVILLE INT

Intersecting SR's: US 40, PA 88 Blainesburg Hill Rd & PennDOT Stock Area#4

Ramp Segment Number and Ramp Segment Length Information:

Segment	Length	Segment	Length	Segment	Length	Segment	Length
0250	1598						
0260	2966						
0500	2364						
0750	2877						

Primary Route Interchange Exit Number

Secondary Route Interchange Exit Number

PennDOT Type 10 Map View:



Last Date Modified:

Aug 12, 2022

County: 62

# RMS Interchange Information

Print Form

Interchange Number: 8046

Bureau of Maintenance & Operations  
Asset Management Division



Interchange Name: STARLAKE INT

Intersecting SR's: US 22, PA 18 Burgettstown Florence Rd

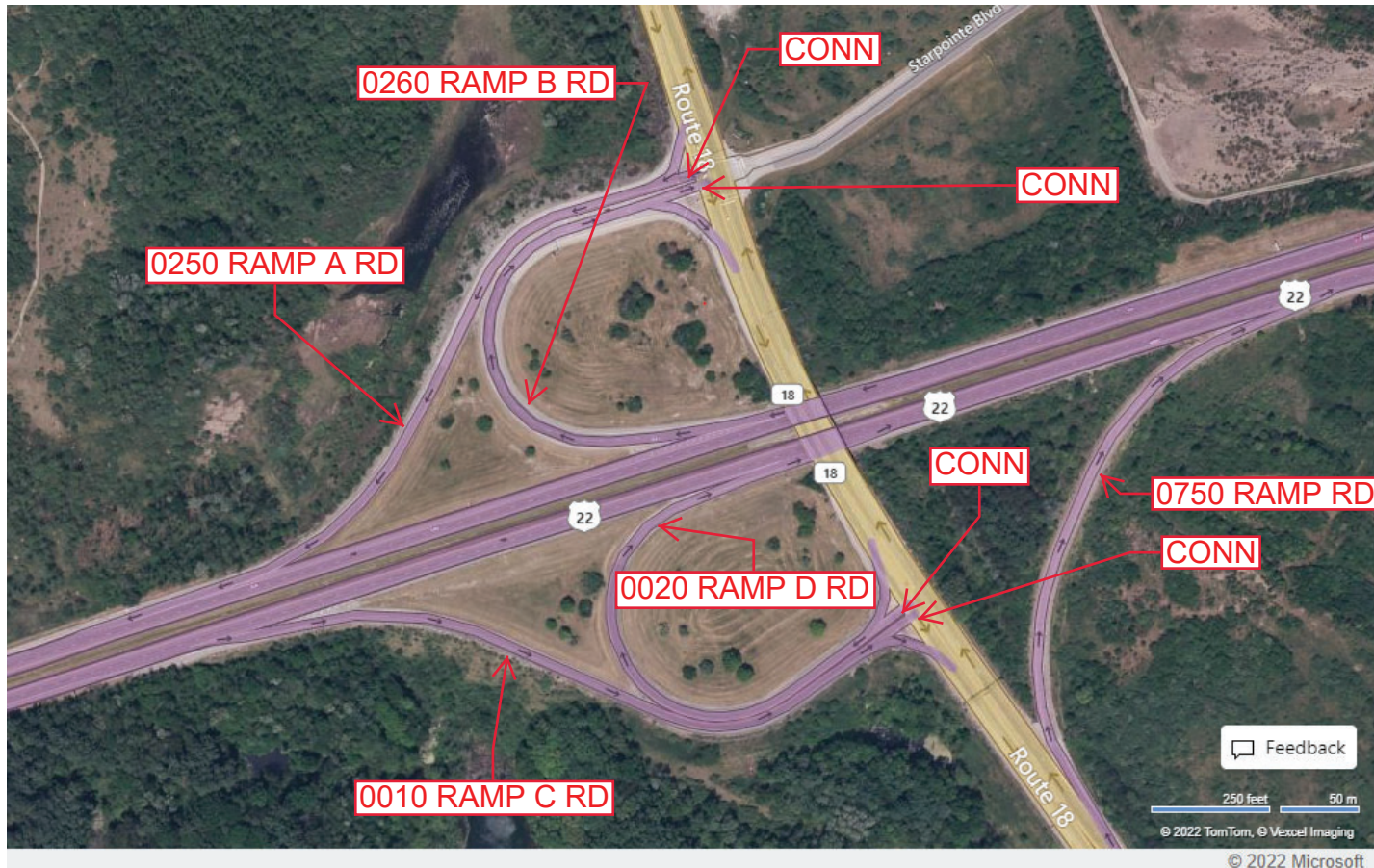
Ramp Segment Number and Ramp Segment Length Information:

Segment	Length	Segment	Length	Segment	Length	Segment	Length
0010	1399						
0020	1131						
0250	1328						
0260	1160						
0750	1000						

Primary Route Interchange Exit Number

Secondary Route Interchange Exit Number

PennDOT Type 10 Map View:



Last Date Modified: Aug 17, 2022

County: 62

# RMS Interchange Information

Print Form

Interchange Number: 8048

Bureau of Maintenance & Operations  
Asset Management Division



Interchange Name: BAVINGTON INT

Intersecting SR's: US 22 & SR 4026 Maple Grove Rd

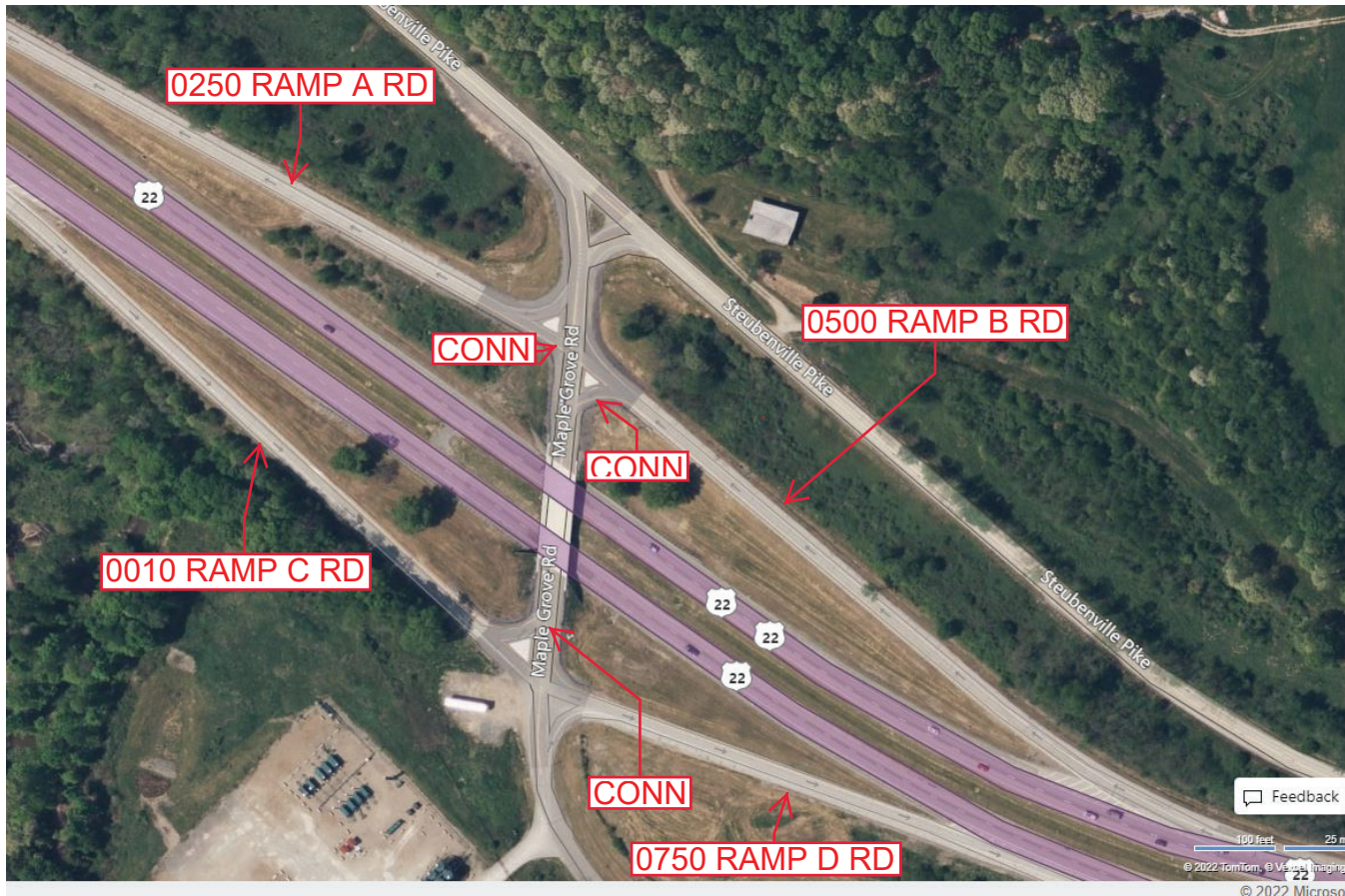
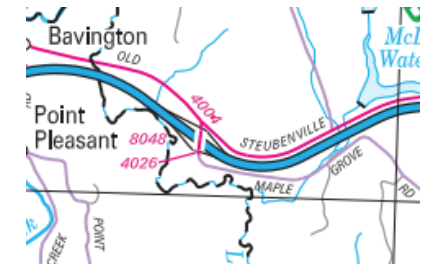
Ramp Segment Number and Ramp Segment Length Information:

Segment	Length	Segment	Length	Segment	Length	Segment	Length
0010	0905						
0250	1039						
0500	0850						
0750	0539						

Primary Route Interchange Exit Number

Secondary Route Interchange Exit Number

PennDOT Type 10 Map View:



Feedback

© 2022 TomTom, © 2022 Mapbox, © 2022 Microsoft

Last Date Modified:

Aug 18, 2022

County: 62

# RMS Interchange Information

Print Form

Interchange Number: 8052

Bureau of Maintenance & Operations  
Asset Management Division



Interchange Name: CHARLEROI INT

Intersecting SR's: I-70 & PA 88 Main St

Ramp Segment Number and Ramp Segment Length Information:

Segment	Length	Segment	Length	Segment	Length	Segment	Length
0010	1728						
0020	1624						
0250	1688						
0260	1612						

Primary Route Interchange Exit Number: 40

Secondary Route Interchange Exit Number

PennDOT Type 10 Map View:



Last Date Modified: Aug 18, 2022



County: 62

# RMS Interchange Information

Print Form

Interchange Number: 9101

Bureau of Maintenance & Operations  
Asset Management Division



Interchange Name: GEORGETOWN RD

Intersecting SR's: US 19 SR 1010 Valley Brook Rd

Ramp Segment Number and Ramp Segment Length Information:

Segment	Length	Segment	Length	Segment	Length	Segment	Length
0500	0766						

Primary Route Interchange Exit Number

Secondary Route Interchange Exit Number

PennDOT Type 10 Map View:



Feedback  
100 feet 25 m  
© 2022 TomTom, © Vexcel Imaging  
© 2022 Microsoft

Last Date Modified:

Aug 19, 2022

County: 62

# RMS Interchange Information

Print Form

Interchange Number: 9102

Bureau of Maintenance & Operations  
Asset Management Division



Interchange Name: INDUSTRIAL PARK RD

Intersecting SR's: PA 837 & SR 1030 Donora Industrial Pk Rd

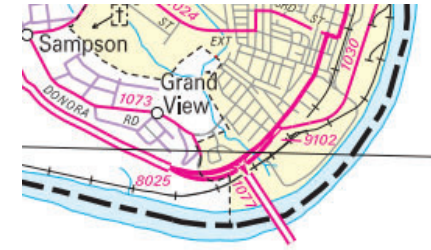
Ramp Segment Number and Ramp Segment Length Information:

Segment	Length	Segment	Length	Segment	Length	Segment	Length
0010	0382						

Primary Route Interchange Exit Number

Secondary Route Interchange Exit Number

PennDOT Type 10 Map View:



County: 62

# RMS Interchange Information

Print Form

Interchange Number: 9202

Bureau of Maintenance & Operations  
Asset Management Division



Interchange Name: CLAYSVILLE WELCOME CTR

Intersecting SR's: I-70 Eastbound

Ramp Segment Number and Ramp Segment Length Information:

Segment	Length	Segment	Length	Segment	Length	Segment	Length
0010	1624						
0020	0890						
0030	0200						

Primary Route  
Interchange Exit  
Number

Secondary Route  
Interchange Exit  
Number

PennDOT Type 10 Map View:



100 feet 25 m  
© 2022 TomTom, © Vexcel Imaging

© 2022 Microsoft

Last Date Modified: Aug 19, 2022

County: 62

# RMS Interchange Information

Print Form

Interchange Number: 9203

Bureau of Maintenance & Operations  
Asset Management Division



Interchange Name: AMWELL TWP REST AREA

Intersecting SR's: I-79 Southbound

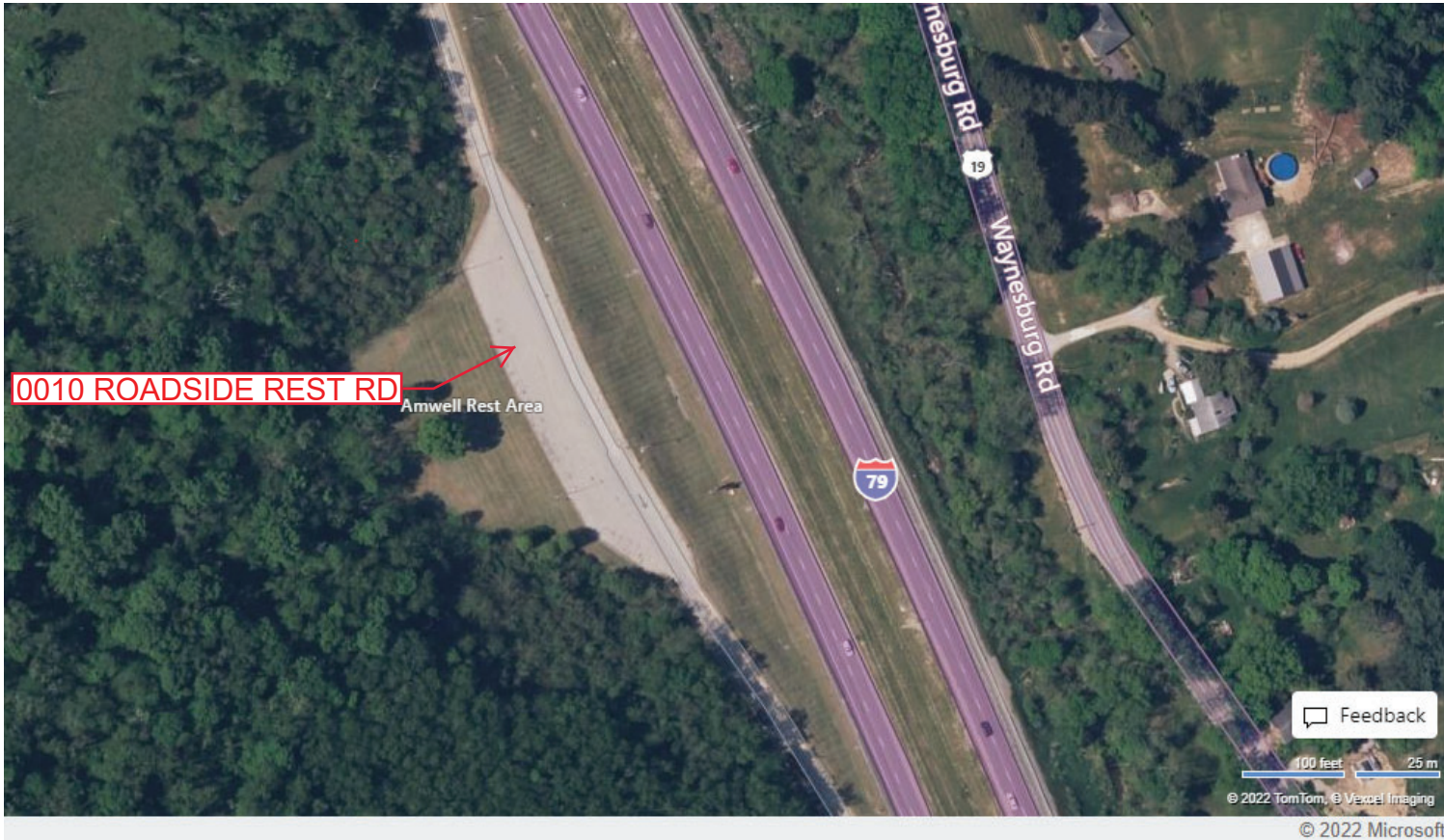
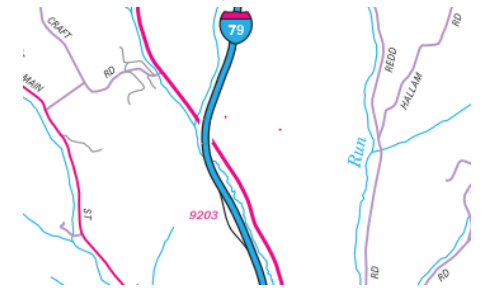
Ramp Segment Number and Ramp Segment Length Information:

Segment	Length	Segment	Length	Segment	Length	Segment	Length
0010	1405						

Primary Route  
Interchange Exit  
Number

Secondary Route  
Interchange Exit  
Number

PennDOT Type 10 Map View:



Last Date Modified: Aug 22, 2022

County: 62

# RMS Interchange Information

Print Form

Interchange Number: 9401

Bureau of Maintenance & Operations  
Asset Management Division



Interchange Name: I-70, SR 1014 & T732

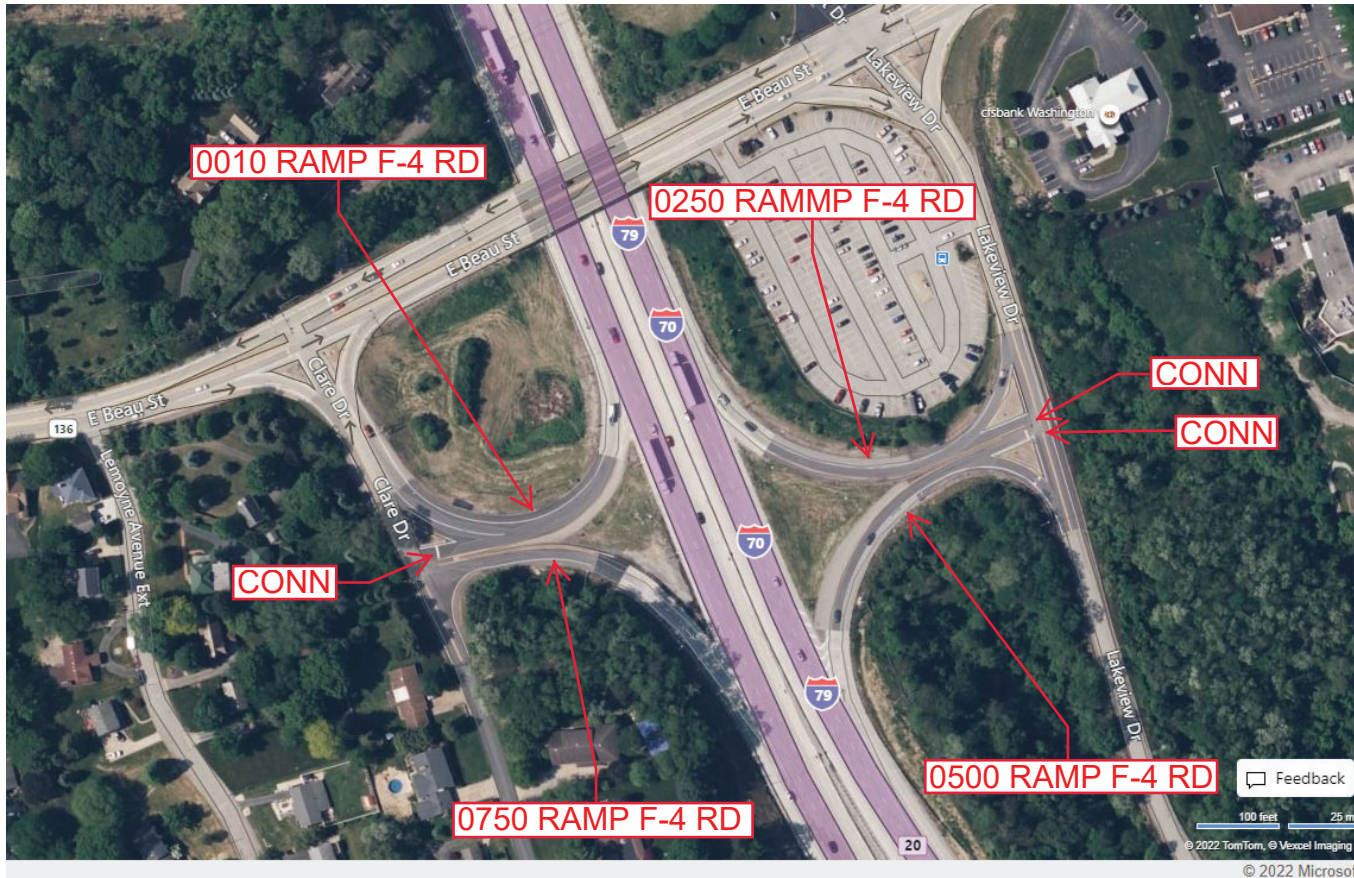
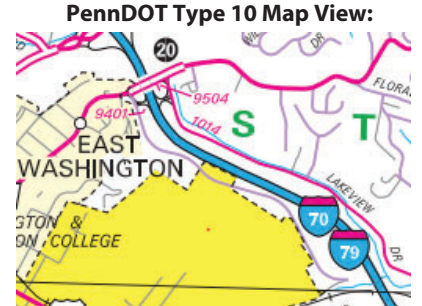
Intersecting SR's: I-70, SR 1014 Lakeview Dr & T732 Clare Dr

Ramp Segment Number and Ramp Segment Length Information:

Segment	Length	Segment	Length	Segment	Length	Segment	Length
0010	0315						
0250	0421						
0500	0392						
0750	0388						

Primary Route Interchange Exit Number: 20

Secondary Route Interchange Exit Number



Last Date Modified:

Aug 22, 2022

County: 62

# RMS Interchange Information

Print Form

Interchange Number: 9403

Bureau of Maintenance & Operations  
Asset Management Division



Interchange Name: PA 18 & MAIN STREET

Intersecting SR's: PA 18 J L Brunner Memorial Bp & Main St

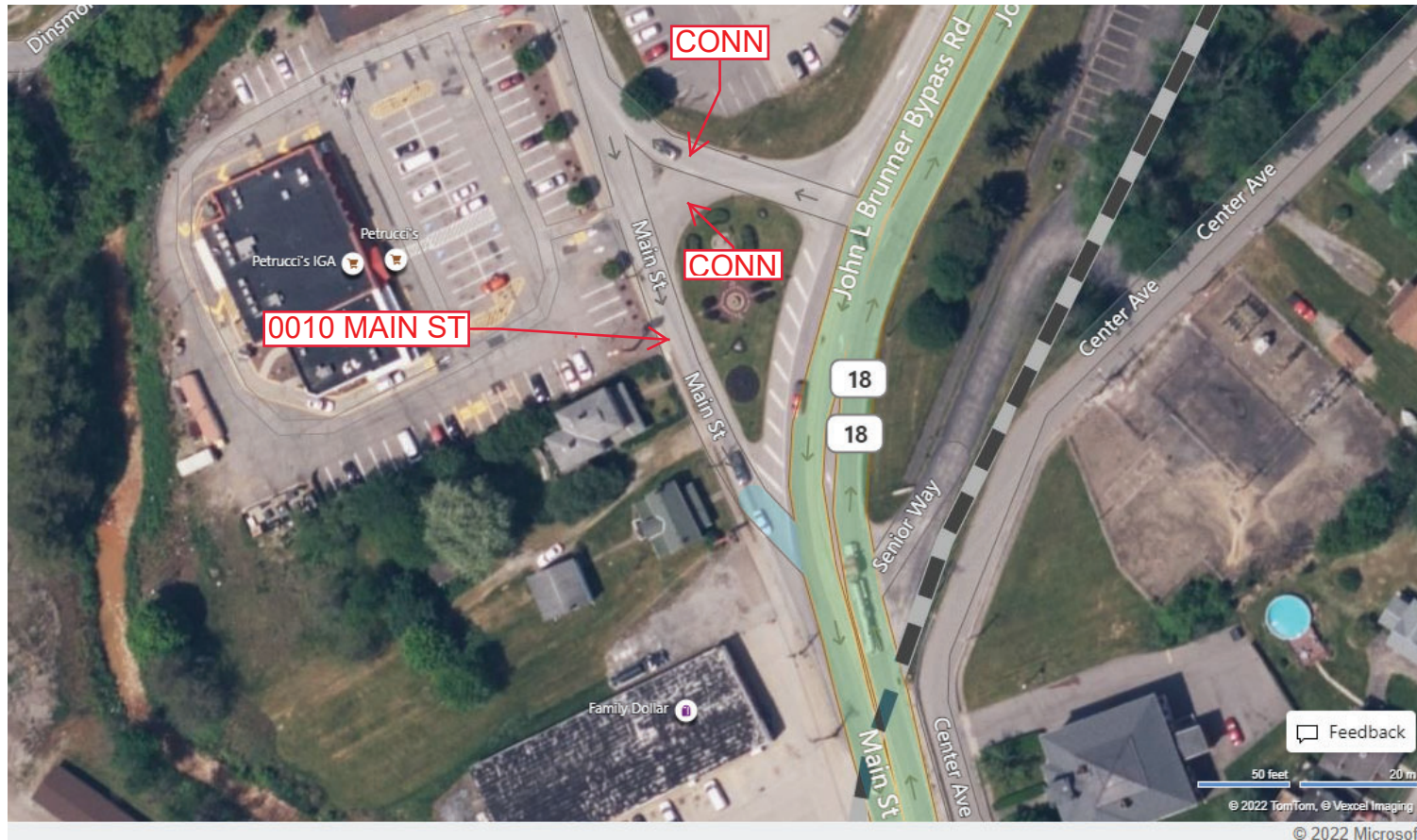
Ramp Segment Number and Ramp Segment Length Information:

Segment	Length	Segment	Length	Segment	Length	Segment	Length
0010	0267						

Primary Route  
Interchange Exit  
Number

Secondary Route  
Interchange Exit  
Number

PennDOT Type 10 Map View:



Feedback

50 feet 20 m

© 2022 TomTom, © Vexcel Imaging

© 2022 Microsoft

Last Date Modified:

Aug 22, 2022

County: 62

# RMS Interchange Information

Print Form

Interchange Number: 9405

Bureau of Maintenance & Operations  
Asset Management Division



Interchange Name: LINN AVE JUGHANDLE

Intersecting SR's: US 19 Ridge Av & CITY Linn Av

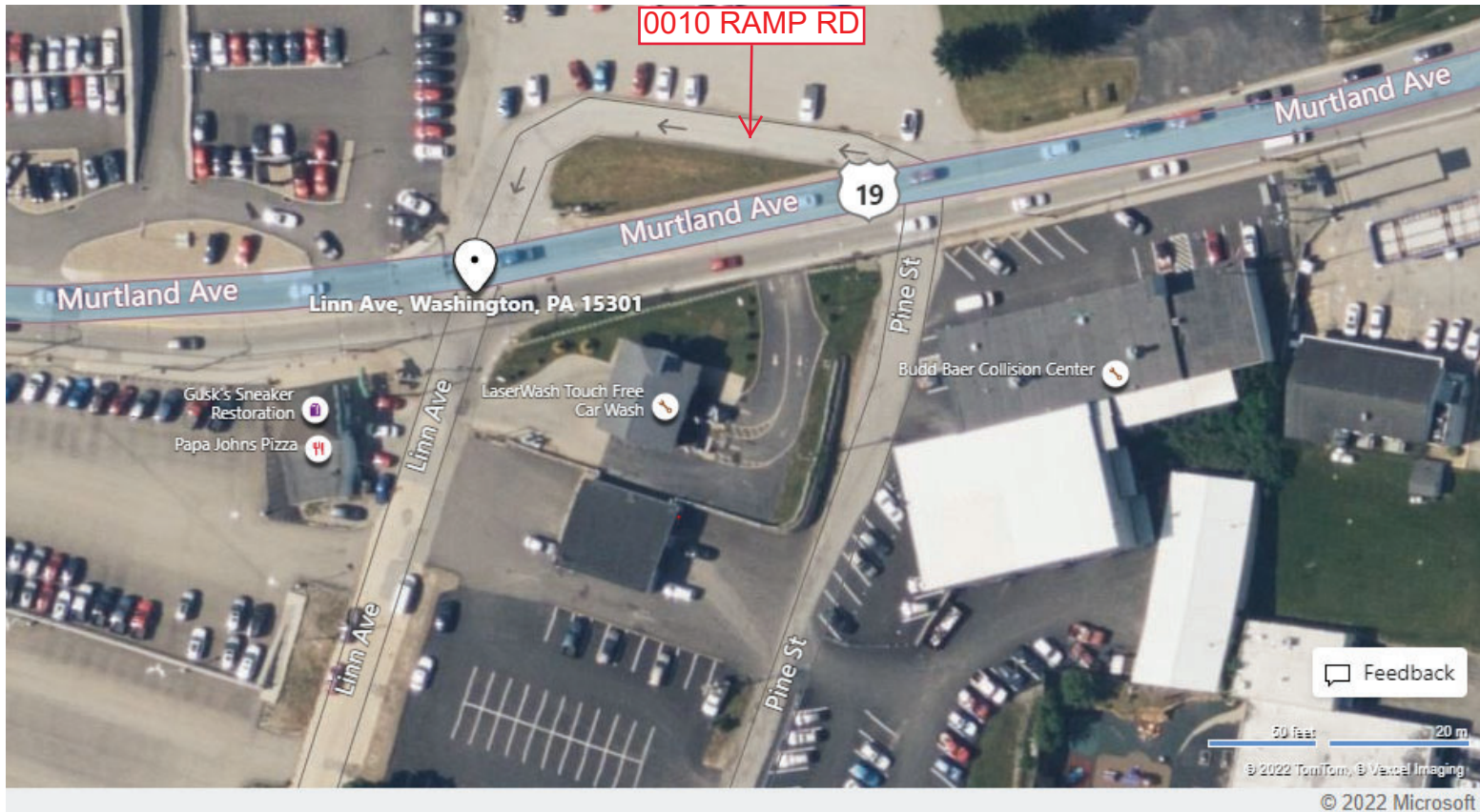
Ramp Segment Number and Ramp Segment Length Information:

Segment	Length	Segment	Length	Segment	Length	Segment	Length
0010	0210						

Primary Route Interchange Exit Number

Secondary Route Interchange Exit Number

PennDOT Type 10 Map View:



Feedback

50 feet 20 m

© 2022 TomTom, © Vexcel Imaging

© 2022 Microsoft

Last Date Modified: Aug 22, 2022

County: **62**

# RMS Interchange Information

Print Form

Interchange Number: **9501**

Bureau of Maintenance & Operations  
Asset Management Division



Interchange Name: **PARK AND RIDE**

Intersecting SR's: **PA 519 Hill Church Rd**

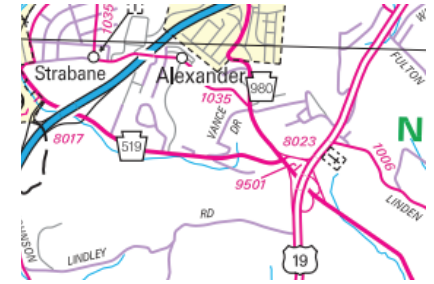
Ramp Segment Number and Ramp Segment Length Information:

Segment	Length	Segment	Length	Segment	Length	Segment	Length
<b>0010</b>	<b>0290</b>						

Primary Route  
Interchange Exit  
Number

Secondary Route  
Interchange Exit  
Number

PennDOT Type 10 Map View:



Last Date Modified:

Aug 22, 2022



County: 62

# RMS Interchange Information

Print Form

Interchange Number: 9502

Bureau of Maintenance & Operations  
Asset Management Division



Interchange Name: PARK AND RIDE

Intersecting SR's: T975 Wilmington St

Ramp Segment Number and Ramp Segment Length Information:

Segment	Length	Segment	Length	Segment	Length	Segment	Length
0010	0180						

Primary Route Interchange Exit Number

Secondary Route Interchange Exit Number

PennDOT Type 10 Map View:



Last Date Modified: Aug 22, 2022

County: 62

# RMS Interchange Information

Print Form

Interchange Number: 9504

Bureau of Maintenance & Operations  
Asset Management Division



Interchange Name: PARK AND RIDE

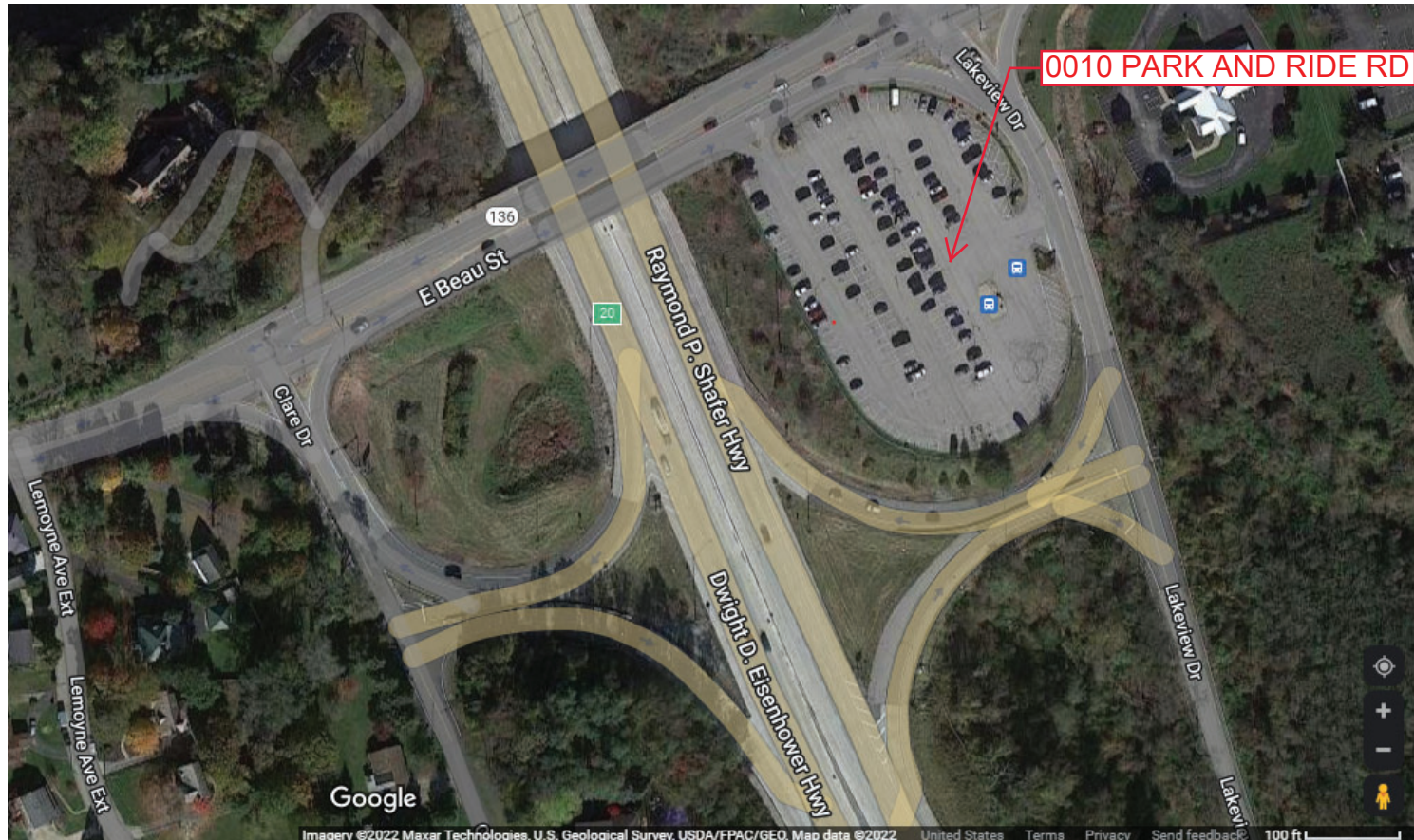
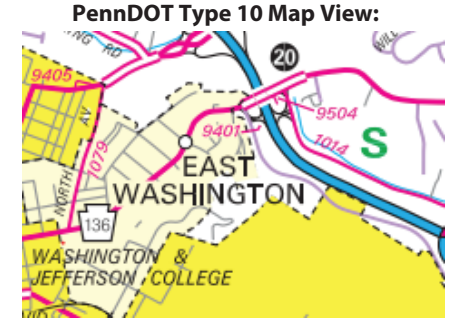
Intersecting SR's: PA 136 Beau St & SR 1014 Lakeview Dr

Ramp Segment Number and Ramp Segment Length Information:

Segment	Length	Segment	Length	Segment	Length	Segment	Length
0010	0380						

Primary Route Interchange Exit Number

Secondary Route Interchange Exit Number



Last Date Modified: Aug 22, 2022

County: **62**

# RMS Interchange Information

Print Form

Interchange Number: **9506**

Bureau of Maintenance & Operations  
Asset Management Division



Interchange Name: **PARK AND RIDE**

Intersecting SR's: **SR 1032 Southpointe Blvd**

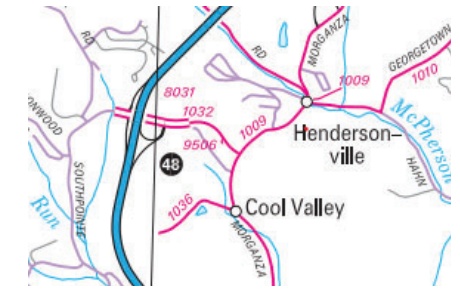
Ramp Segment Number and Ramp Segment Length Information:

Segment	Length	Segment	Length	Segment	Length	Segment	Length
<b>0010</b>	<b>0115</b>						

Primary Route Interchange Exit Number

Secondary Route Interchange Exit Number

PennDOT Type 10 Map View:



Last Date Modified: **Aug 23, 2022**