

County: **64**

# RMS Interchange Information

Print Form

Interchange Number: **8001**

Bureau of Maintenance & Operations  
Asset Management Division



Interchange Name: **SCOTSDALE INT**

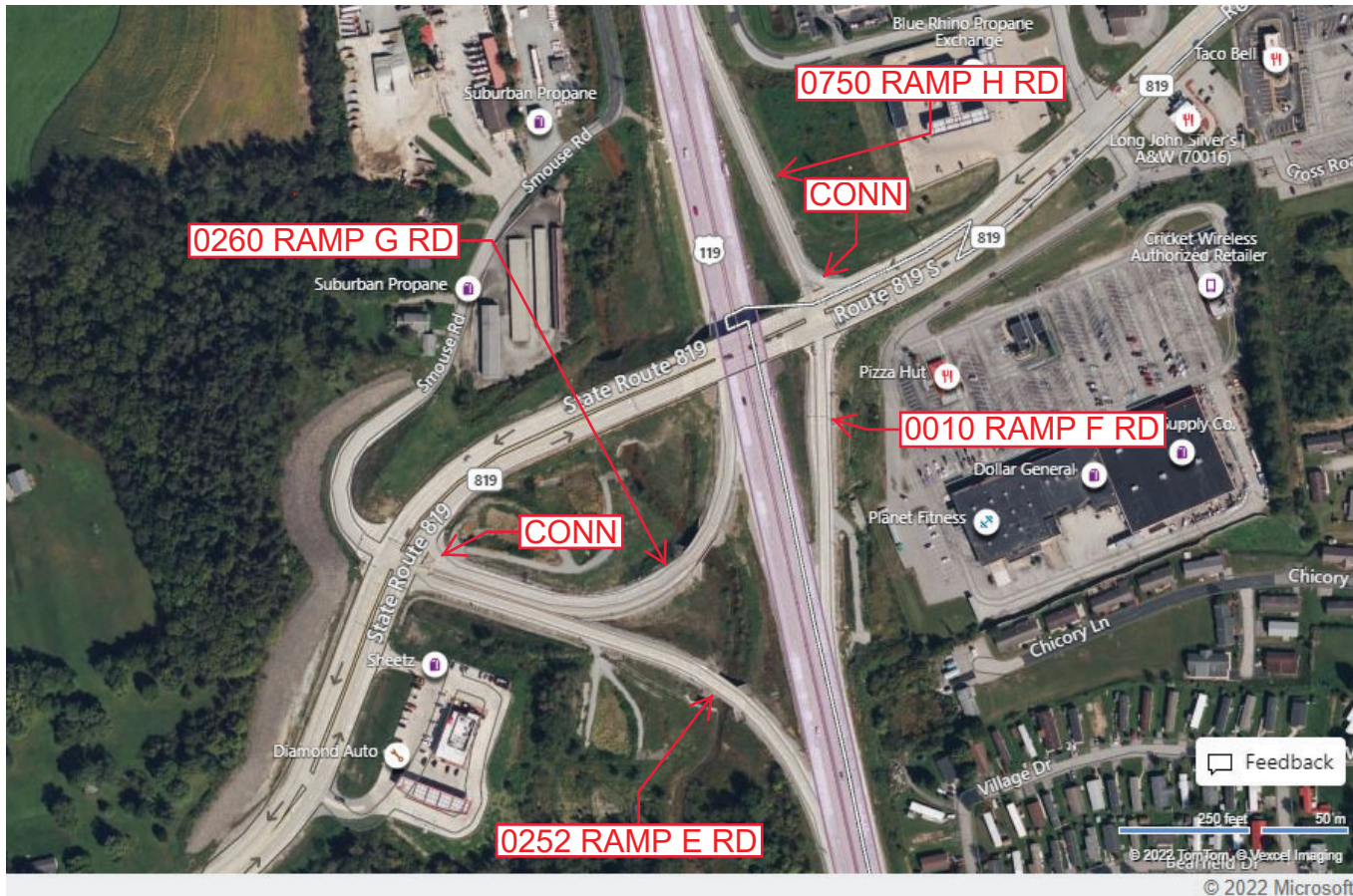
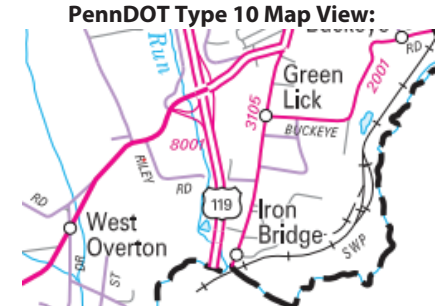
Intersecting SR's: **US 119 New Stanton Rd & PA 819, T511 Smouse Rd**

Ramp Segment Number and Ramp Segment Length Information:

Segment	Length	Segment	Length	Segment	Length	Segment	Length
<b>0010</b>	<b>0456</b>						
<b>0252</b>	<b>0907</b>						
<b>0260</b>	<b>0792</b>						
<b>0750</b>	<b>0532</b>						

Primary Route Interchange Exit Number

Secondary Route Interchange Exit Number



Last Date Modified:

Aug 24, 2022

County: **64**

# RMS Interchange Information

Print Form

Interchange Number: **8002**

Bureau of Maintenance & Operations  
Asset Management Division



Interchange Name: **ADAMSBURG INT**

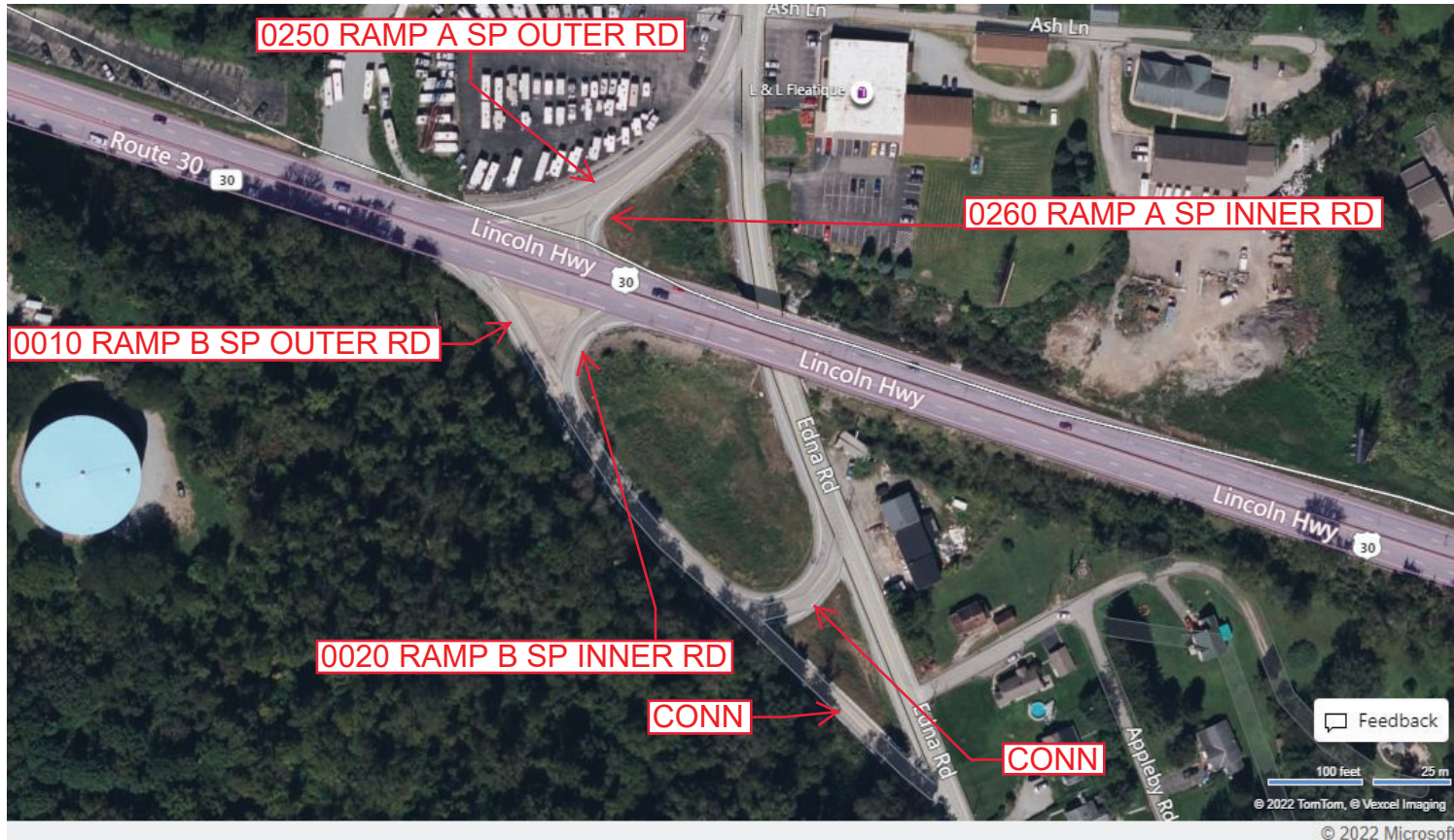
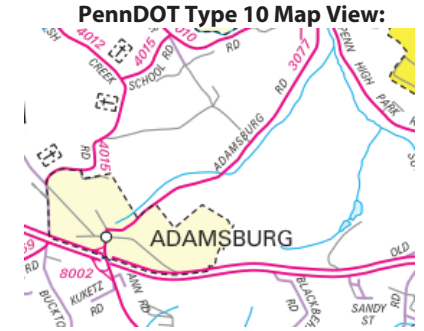
Intersecting SR's: **US 30 Lincoln Hw & SR 3077 Edna Rd**

Ramp Segment Number and Ramp Segment Length Information:

Segment	Length	Segment	Length	Segment	Length	Segment	Length
<b>0010</b>	<b>0705</b>						
<b>0020</b>	<b>0529</b>						
<b>0250</b>	<b>0350</b>						
<b>0260</b>	<b>0220</b>						

Primary Route Interchange Exit Number

Secondary Route Interchange Exit Number



Last Date Modified:

Aug 25, 2022

County: **64**

# RMS Interchange Information

Print Form

Interchange Number: **8003**

Bureau of Maintenance & Operations  
Asset Management Division



Interchange Name: **MOUNT PLEASANT INT**

Intersecting SR's: **US 119 & PA 31 Ruffsdale Mt Pleasant Rd**

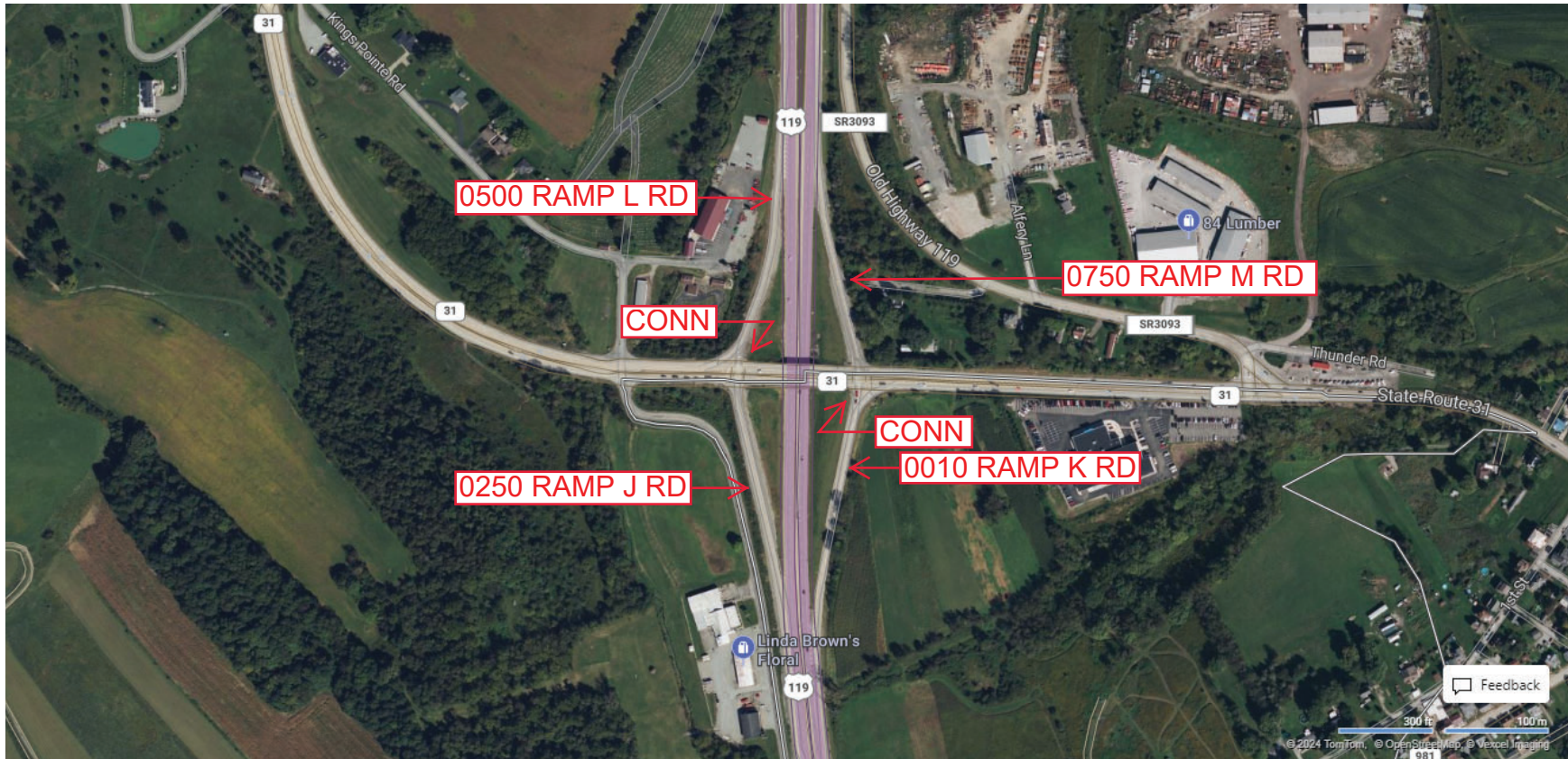
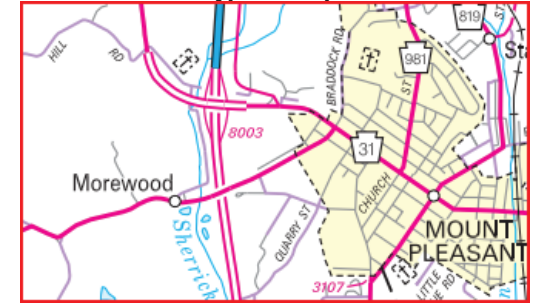
Ramp Segment Number and Ramp Segment Length Information:

Segment	Length	Segment	Length	Segment	Length	Segment	Length
<b>0010</b>	<b>0790</b>						
<b>0250</b>	<b>0679</b>						
<b>0500</b>	<b>0610</b>						
<b>0750</b>	<b>0642</b>						

Primary Route  
Interchange Exit  
Number

Secondary Route  
Interchange Exit  
Number

PennDOT Type 10 Map View:



Last Date Modified:

Jan 16, 2025

County: 64

# RMS Interchange Information

Print Form

Interchange Number: 8004

Bureau of Maintenance & Operations  
Asset Management Division



Interchange Name: PITTSBURGH ST INT

Intersecting SR's: US 30 Lincoln HW & SR 3026 Tollgate Hill Rd

Ramp Segment Number and Ramp Segment Length Information:

Segment	Length	Segment	Length	Segment	Length	Segment	Length
0010	0715						
0250	2654						

Primary Route Interchange Exit Number

Secondary Route Interchange Exit Number

PennDOT Type 10 Map View:



Last Date Modified: Aug 25, 2022

County: 64

# RMS Interchange Information

Print Form

Interchange Number: 8005

Bureau of Maintenance & Operations  
Asset Management Division



Interchange Name: TECHNOLOGY DR INT

Intersecting SR's: US 119 & 3095 Technology Dr

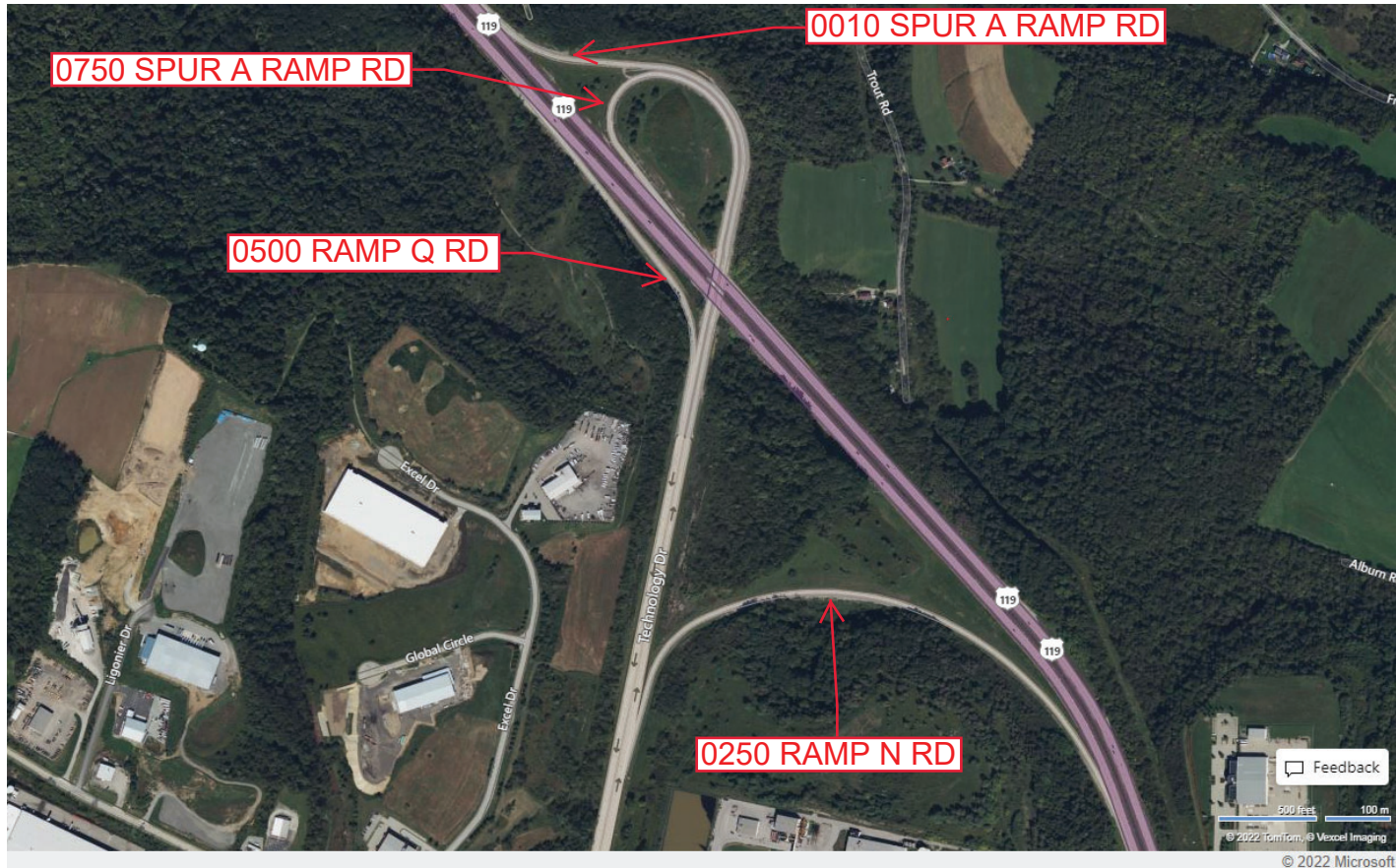
Ramp Segment Number and Ramp Segment Length Information:

Segment	Length	Segment	Length	Segment	Length	Segment	Length
0010	2115						
0250	3015						
0500	1335						
0750	2000						

Primary Route  
Interchange Exit  
Number

Secondary Route  
Interchange Exit  
Number

PennDOT Type 10 Map View:



Last Date Modified:

Aug 25, 2022

County: 64

# RMS Interchange Information

Print Form

Interchange Number: 8006

Bureau of Maintenance & Operations  
Asset Management Division



Interchange Name: GREENSBURG/MOUNT PLEASANT INT

Intersecting SR's: US 30 Lincoln Hw & Mt Pleasant Rd

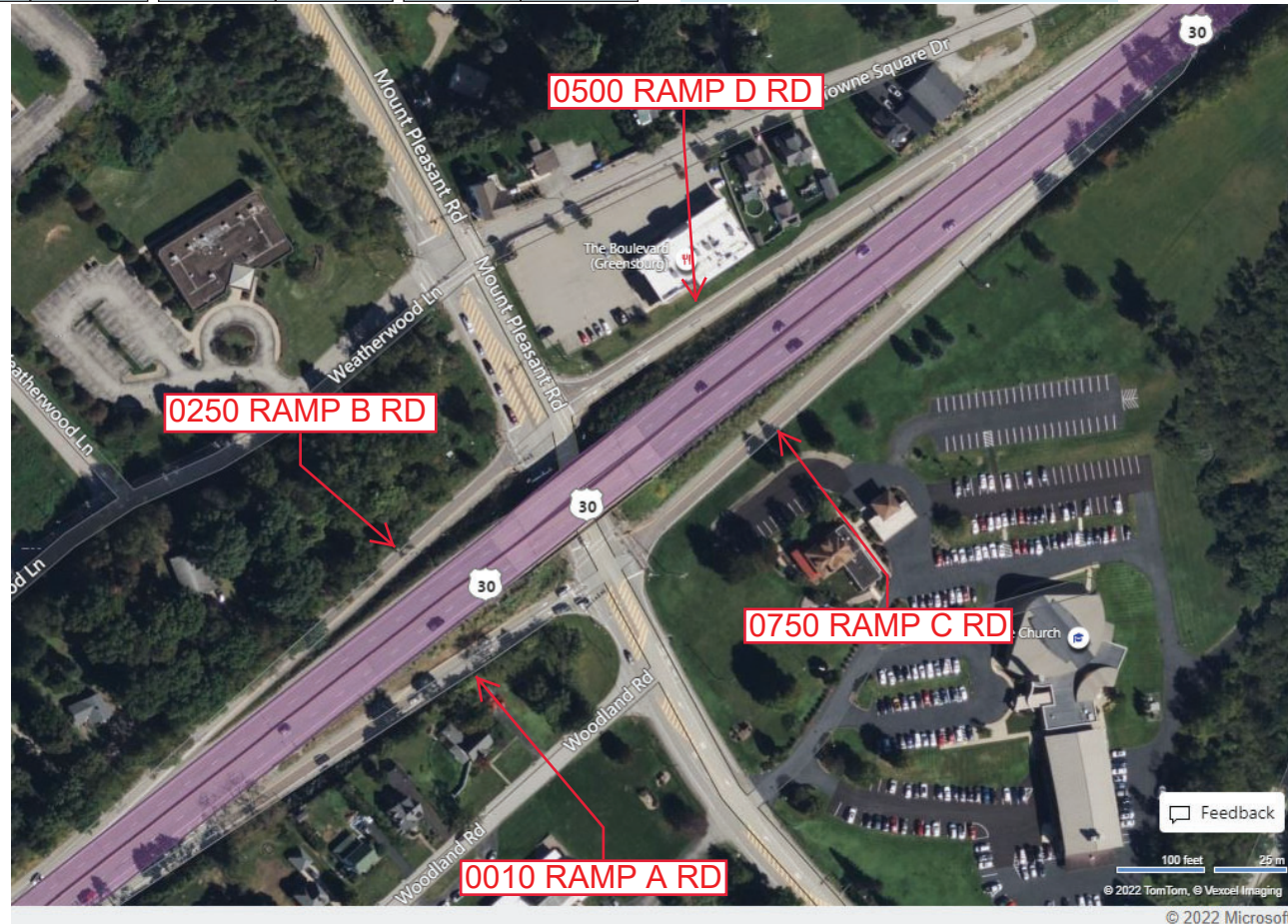
Ramp Segment Number and Ramp Segment Length Information:

Segment	Length	Segment	Length	Segment	Length	Segment	Length
0010	0469						
0250	0491						
0500	0524						
0750	0552						

Primary Route  
Interchange Exit  
Number

Secondary Route  
Interchange Exit  
Number

PennDOT Type 10 Map View:



Feedback

100 feet 20m  
© 2022 TomTom, © Vexcel Imaging  
© 2022 Microsoft

Last Date Modified:

Aug 25, 2022

County: 64

# RMS Interchange Information

Print Form

Interchange Number: 8007

Bureau of Maintenance & Operations  
Asset Management Division



Interchange Name: YOUNGWOOD INT

Intersecting SR's: US 119 & SR 3091 New Stanton/Youngwood Rd

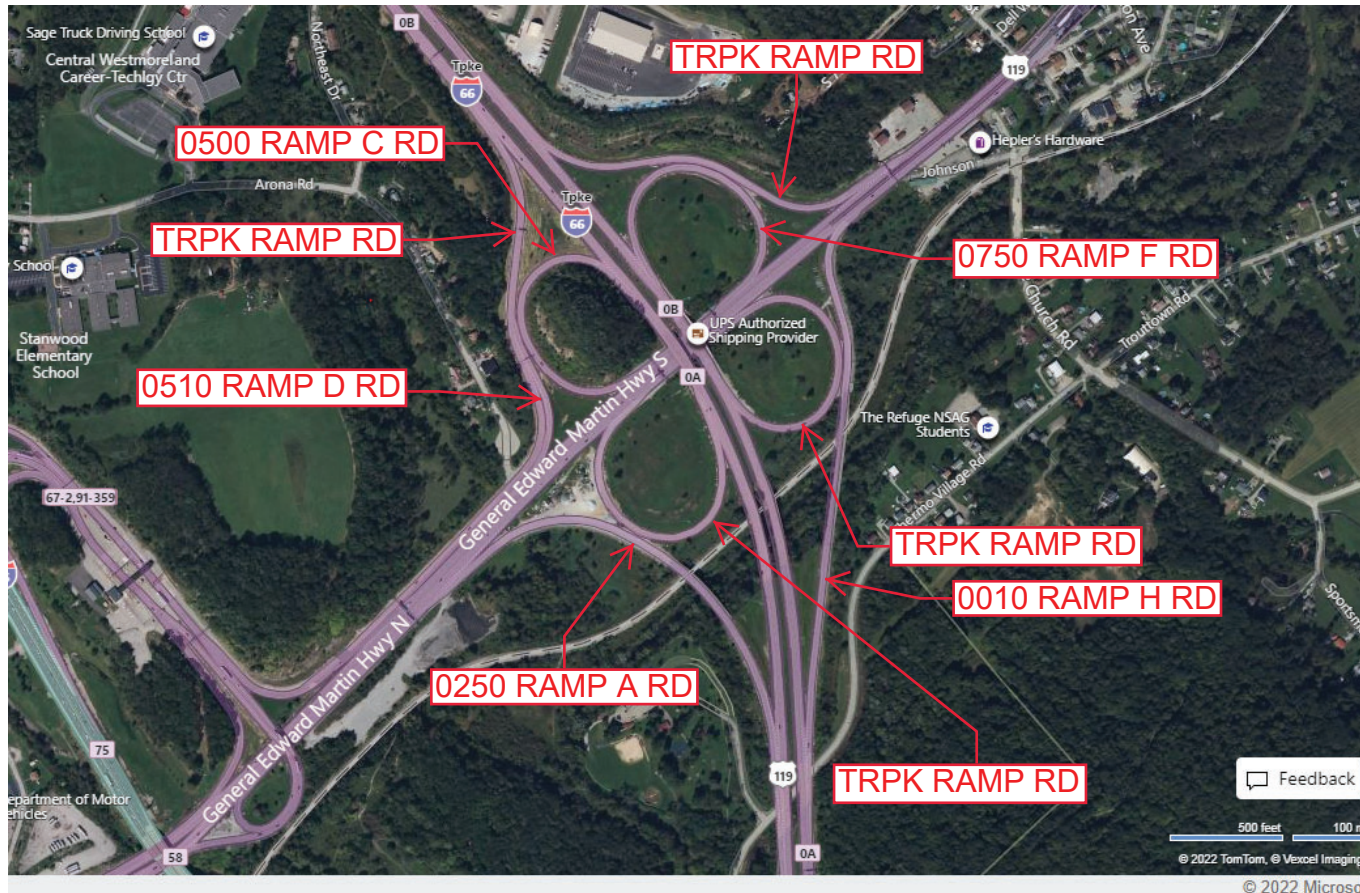
Ramp Segment Number and Ramp Segment Length Information:

Segment	Length	Segment	Length	Segment	Length	Segment	Length
0010	2264						
0250	1735						
0500	1165						
0510	0260						
0750	1173						

Primary Route Interchange Exit Number: 1A

Secondary Route Interchange Exit Number: 0A/0B

PennDOT Type 10 Map View:



Feedback  
500 feet 100 m  
© 2022 TomTom, © Vexcel Imaging  
© 2022 Microsoft

Last Date Modified: Aug 26, 2022

County: 64

# RMS Interchange Information

Print Form

Interchange Number: 8008

Bureau of Maintenance & Operations  
Asset Management Division



Interchange Name: CEDAR ST INT

Intersecting SR's: US 30 Lincoln Hw & Cedar St

Ramp Segment Number and Ramp Segment Length Information:

Segment	Length	Segment	Length	Segment	Length	Segment	Length
0010	0100						
0250	0085						
0500	0075						
0750	0060						

Primary Route Interchange Exit Number

Secondary Route Interchange Exit Number

PennDOT Type 10 Map View:



Feedback

50 feet 20 m  
© 2022 TomTom, © Vexcel Imaging  
© 2022 Microsoft

Last Date Modified: Oct 14, 2022



County: 64

# RMS Interchange Information

Print Form

Interchange Number: 8009

Bureau of Maintenance & Operations  
Asset Management Division



Interchange Name: SOUTH GREESBURG INT

Intersecting SR's: US 30 Lincoln Hw & US 119 Main St

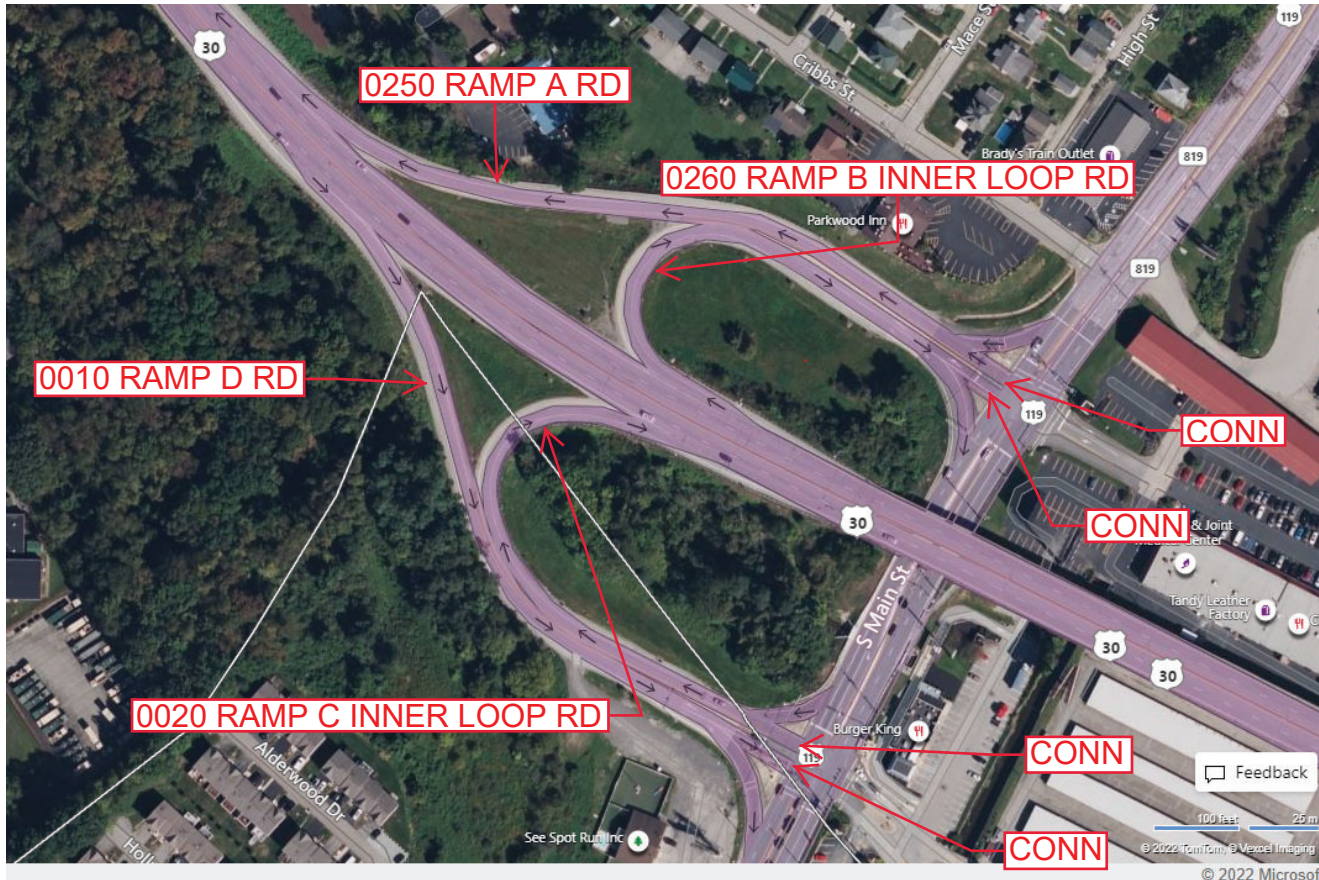
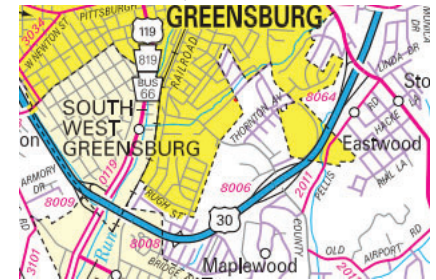
Ramp Segment Number and Ramp Segment Length Information:

Segment	Length	Segment	Length	Segment	Length	Segment	Length
0010	0858						
0020	0700						
0250	0827						
0260	0584						

Primary Route Interchange Exit Number

Secondary Route Interchange Exit Number

PennDOT Type 10 Map View:



Last Date Modified:

Aug 29, 2022

County: 64

# RMS Interchange Information

Print Form

Interchange Number: 8010

Bureau of Maintenance & Operations  
Asset Management Division



Interchange Name: YOUNGSTOWN INT

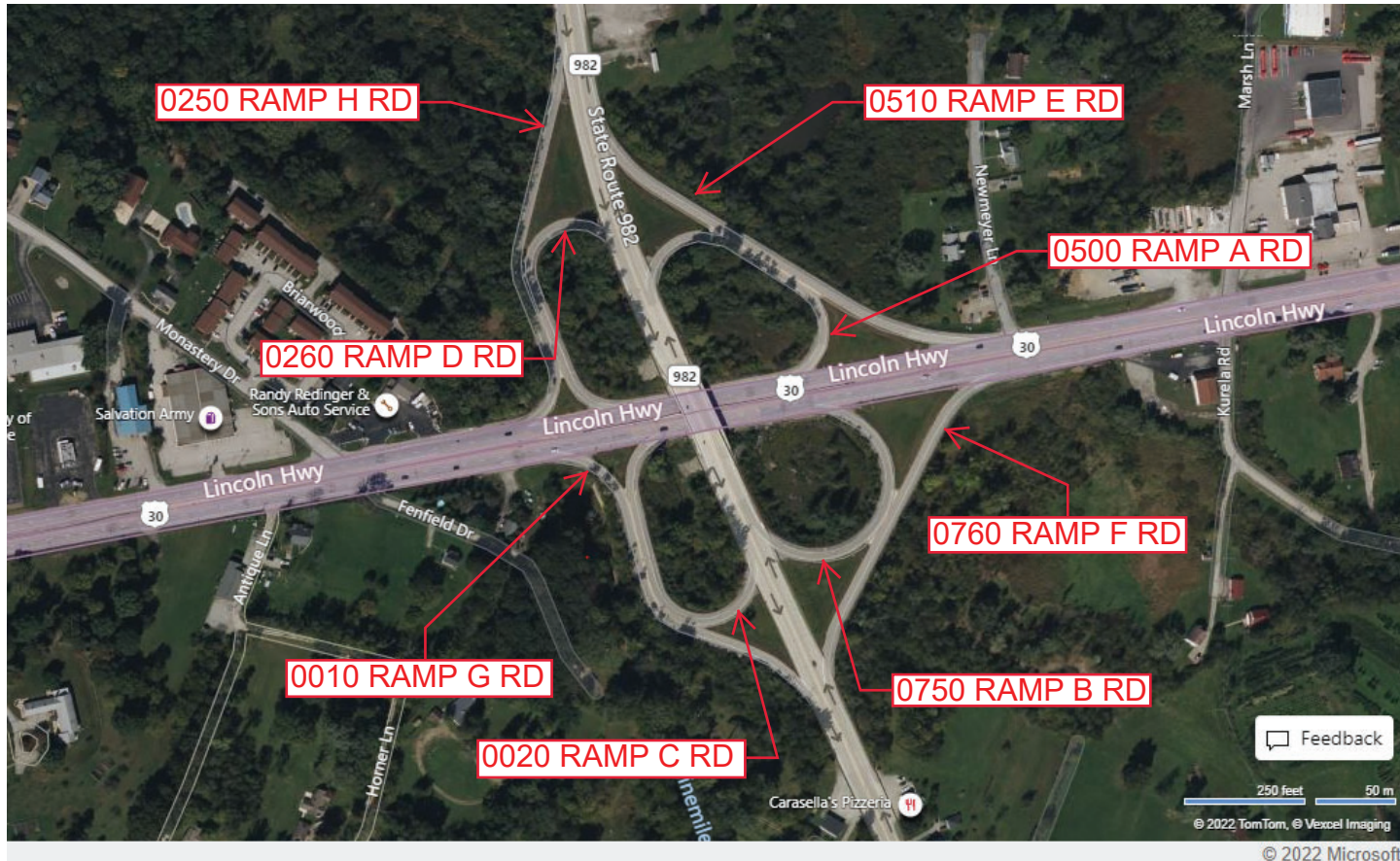
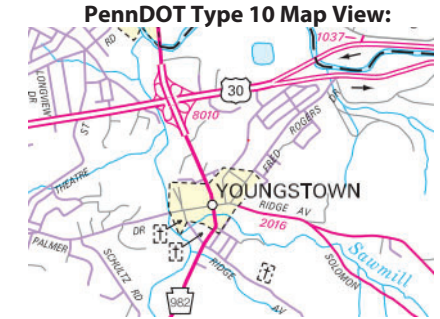
Intersecting SR's: US 30 Lincoln Hw & PA 982 Latrobe St

Ramp Segment Number and Ramp Segment Length Information:

Segment	Length	Segment	Length	Segment	Length	Segment	Length
0010	0731	0510	0833				
0020	0608	0750	0555				
0250	0758	0760	0653				
0260	0575						
0500	0562						

Primary Route Interchange Exit Number

Secondary Route Interchange Exit Number



Feedback  
250 feet 50 m  
© 2022, TomTom, © Voxel Imaging  
© 2022 Microsoft

Last Date Modified:

Aug 29, 2022

County: 64

# RMS Interchange Information

Print Form

Bureau of Maintenance & Operations  
Asset Management Division



Interchange Number: 8011

Interchange Name: SWEENEY'S SR 201 SH

Intersecting SR's: PA 51, PA 201 Rostraver Rd & Pleasant Village Rd

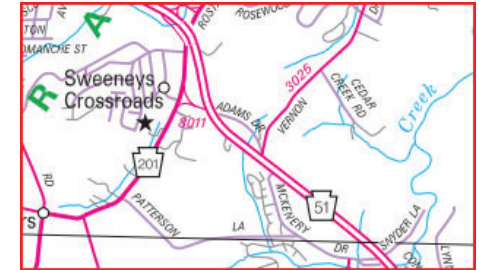
Ramp Segment Number and Ramp Segment Length Information:

Segment	Length	Segment	Length	Segment	Length	Segment	Length
0250	0740	0762	0671				
0260	0535						
0502	0745						
0512	0275						
0752	0655						

Primary Route Interchange Exit Number

Secondary Route Interchange Exit Number

PennDOT Type 10 Map View:



Last Date Modified: Feb 14, 2025

County: **64**

# RMS Interchange Information

Print Form

Interchange Number: **8013**

Bureau of Maintenance & Operations  
Asset Management Division



Interchange Name: **SOUTH DELMONT INT**

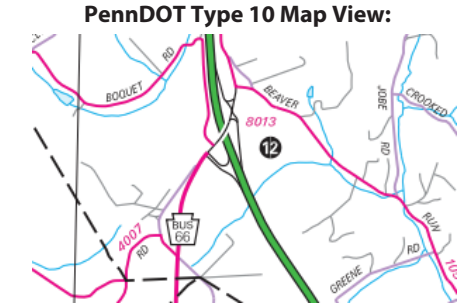
Intersecting SR's: **PA Turnpike, PA 66 (Bus66) & Brick Hill Rd**

Ramp Segment Number and Ramp Segment Length Information:

Segment	Length	Segment	Length	Segment	Length	Segment	Length
<b>0020</b>	<b>1120</b>						
<b>0500</b>	<b>1140</b>						

Primary Route Interchange Exit Number: **12**

Secondary Route Interchange Exit Number



Last Date Modified:

Aug 29, 2022

County: 64

# RMS Interchange Information

Print Form

Bureau of Maintenance & Operations  
Asset Management Division



Interchange Number: 8014

Interchange Name: BELLE VERNON INT

Intersecting SR's: I-70 PA 906 Belle Vernon Monessen Rd/Main St

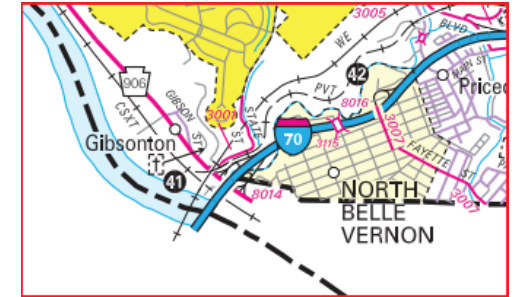
Ramp Segment Number and Ramp Segment Length Information:

Segment	Length	Segment	Length	Segment	Length	Segment	Length
0502	1020						
0512	0632						
0752	1060						
0762	0533						

Primary Route Interchange Exit Number: 41

Secondary Route Interchange Exit Number

PennDOT Type 10 Map View:



Privacy Choices Consumer Health Privacy

© 2025 Microsoft

Last Date Modified:

Feb 14, 2025

County: **64**

# RMS Interchange Information

Print Form

Interchange Number: **8015**

Bureau of Maintenance & Operations  
Roadway Management Division



Interchange Name: **US 119 & SR 3042**

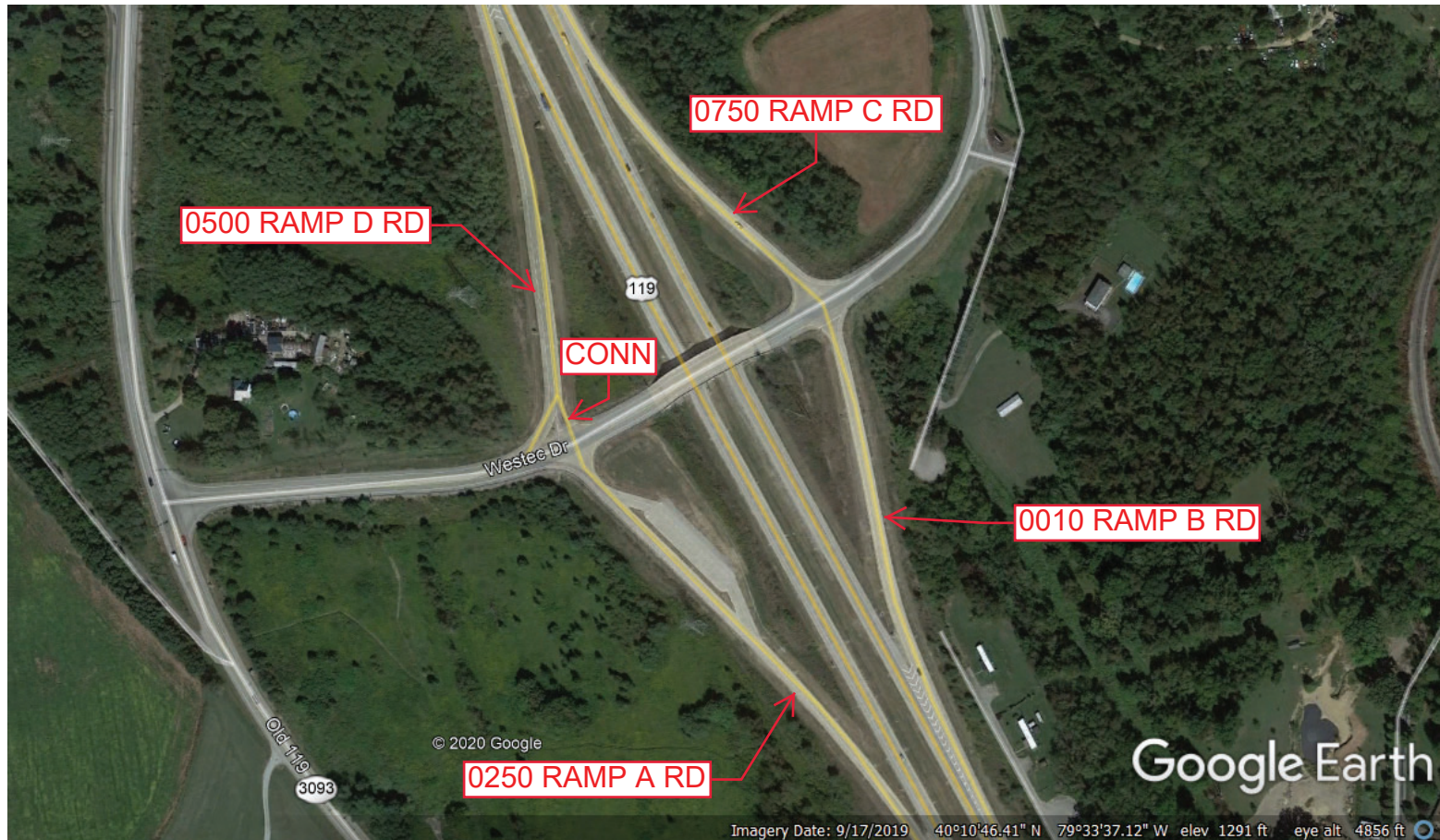
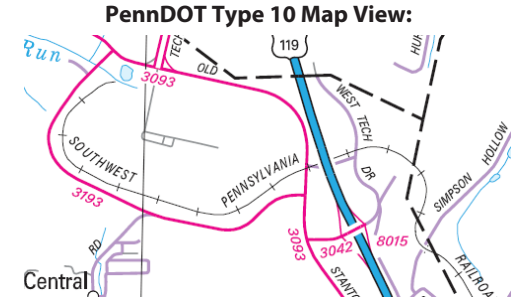
Intersecting SR's: **US 119 & SR 3042 Westec Dr**

Ramp Segment Number and Ramp Segment Length Information:

Segment	Length	Segment	Length	Segment	Length	Segment	Length
<b>0010</b>	<b>0785</b>						
<b>0250</b>	<b>1125</b>						
<b>0500</b>	<b>0920</b>						
<b>0750</b>	<b>0710</b>						

Primary Route Interchange Exit Number

Secondary Route Interchange Exit Number



Last Date Modified: **Apr 14, 2020**

County: **64**

# RMS Interchange Information

Print Form

Bureau of Maintenance & Operations  
Asset Management Division



Interchange Number: **8016**

Interchange Name: **FAYETTE ST INT**

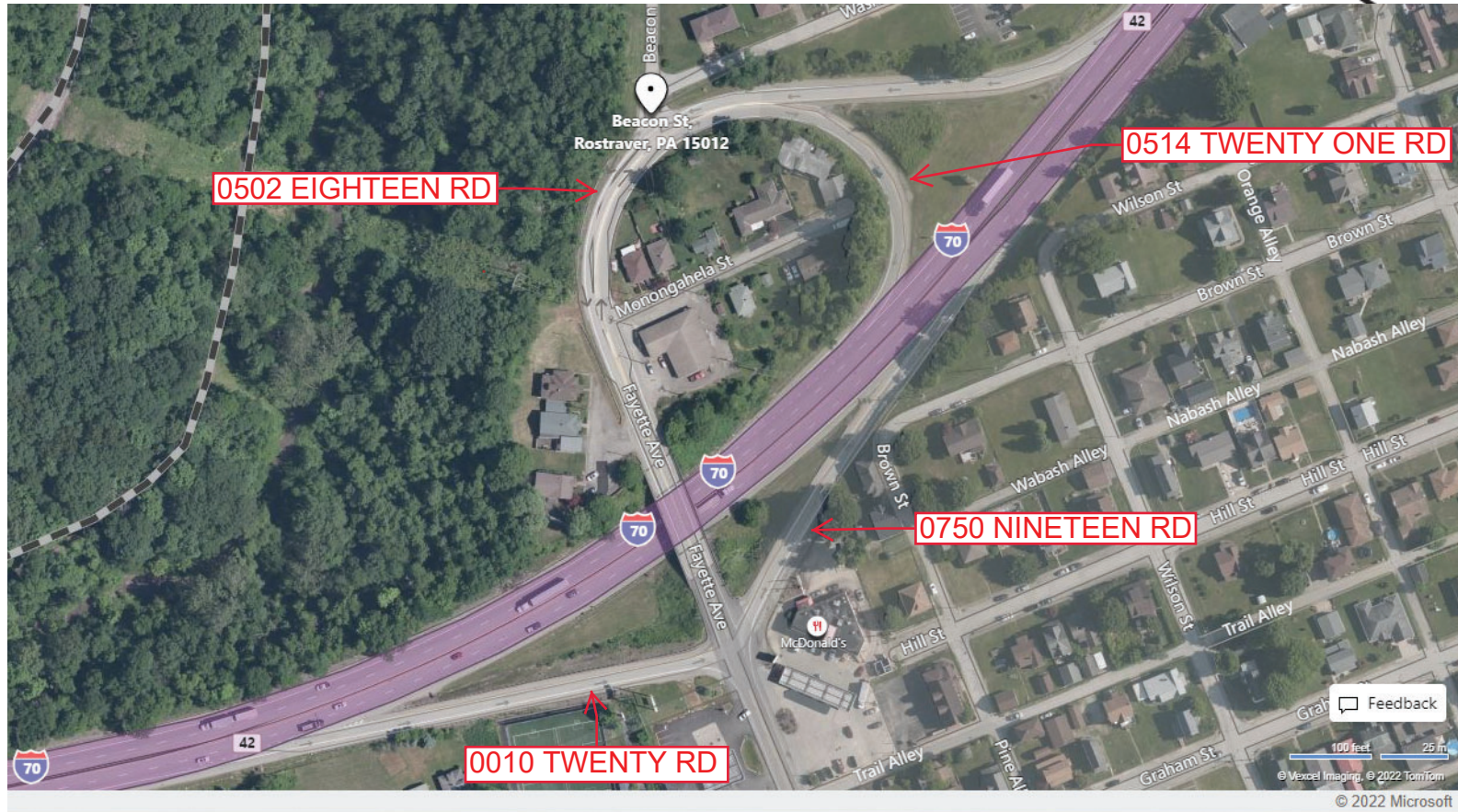
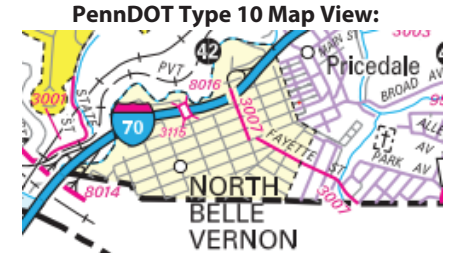
Intersecting SR's: **I-70, SR 3007 Fayette St, TWP Beacon St & Monongahela St**

Ramp Segment Number and Ramp Segment Length Information:

Segment	Length	Segment	Length	Segment	Length	Segment	Length
<b>0010</b>	<b>0416</b>						
<b>0502</b>	<b>0518</b>						
<b>0514</b>	<b>0453</b>						
<b>0750</b>	<b>0376</b>						

Primary Route Interchange Exit Number

Secondary Route Interchange Exit Number



Last Date Modified:

Mar 25, 2022

County: 64

# RMS Interchange Information

Print Form

Interchange Number: 8018

Bureau of Maintenance & Operations  
Roadway Management Division



Interchange Name: WEST NEWTON

Intersecting SR's: US 30 Lincoln Hw & PA 136 West Newton St

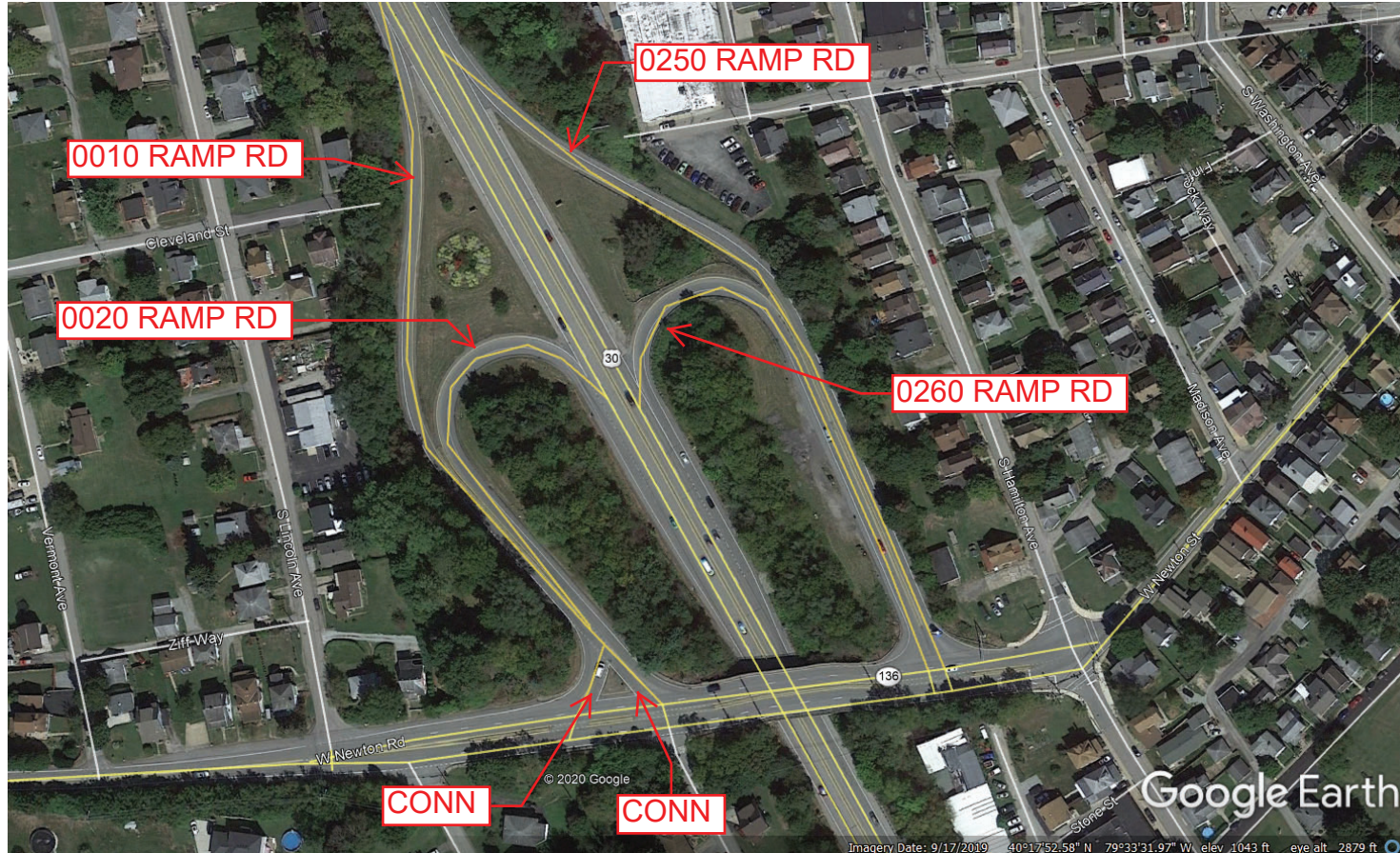
Ramp Segment Number and Ramp Segment Length Information:

Segment	Length	Segment	Length	Segment	Length	Segment	Length
0010	0838						
0020	0630						
0250	0956						
0260	0715						

Primary Route Interchange Exit Number

Secondary Route Interchange Exit Number

PennDOT Type 10 Map View:



Last Date Modified: May 20, 2020



County: 64

# RMS Interchange Information

Print Form

Interchange Number: 8020

Bureau of Maintenance & Operations  
Asset Management Division



Interchange Name: PRICEDALE INT

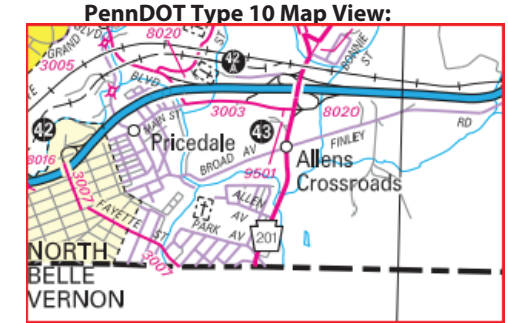
Intersecting SR's: I-70, PA 201 Rostraver Rd, SR 3003 Tyrol Bl & Green Hill Rd

Ramp Segment Number and Ramp Segment Length Information:

Segment	Length	Segment	Length	Segment	Length	Segment	Length
0010	0355	0752	0770				
0250	0770	0762	0650				
0260	0620						
0270	0345						
0500	0389						

Primary Route Interchange Exit Number: 42A, 43

Secondary Route Interchange Exit Number: 43A, 43B



Last Date Modified: Feb 18, 2025

County: 64

# RMS Interchange Information

Print Form

Interchange Number: 8022

Bureau of Maintenance & Operations  
Roadway Management Division



Interchange Name: ARNOLD CITY

Intersecting SR's: I-70 & SR 3011 Indian Hill Rd

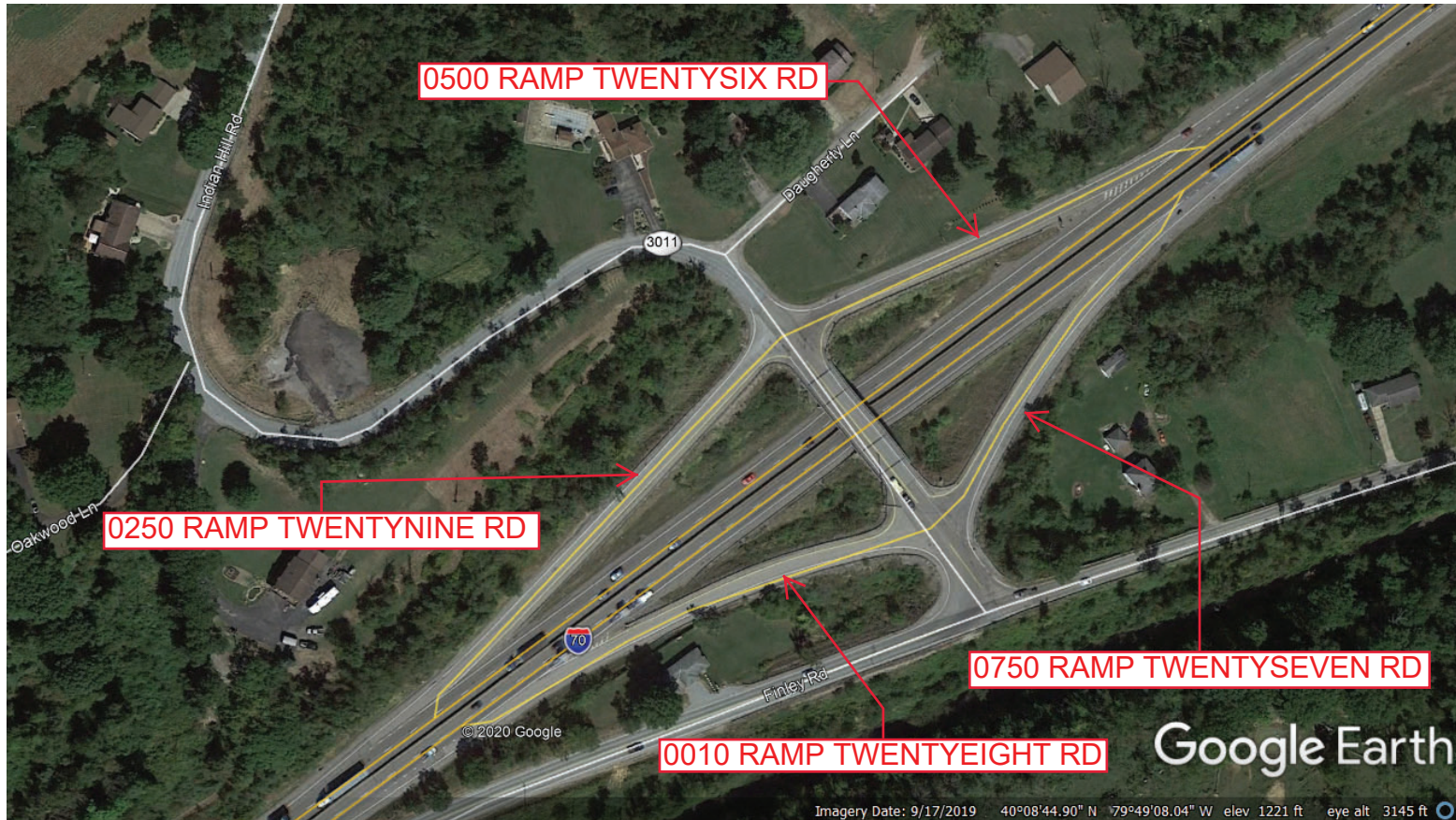
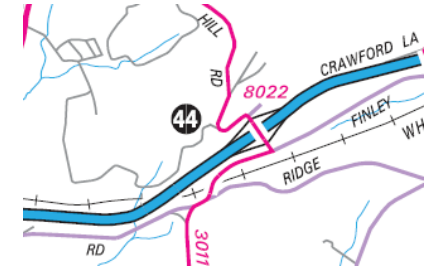
Ramp Segment Number and Ramp Segment Length Information:

Segment	Length	Segment	Length	Segment	Length	Segment	Length
0010	0386						
0250	0493						
0500	0425						
0750	0361						

Primary Route Interchange Exit Number: 44

Secondary Route Interchange Exit Number:

PennDOT Type 10 Map View:



Last Date Modified: May 20, 2020

County: **64**

# RMS Interchange Information

Bureau of Maintenance & Operations  
Asset Management Division

Print Form



Interchange Number: **8024**

Interchange Name: **UNIONTOWN INT**

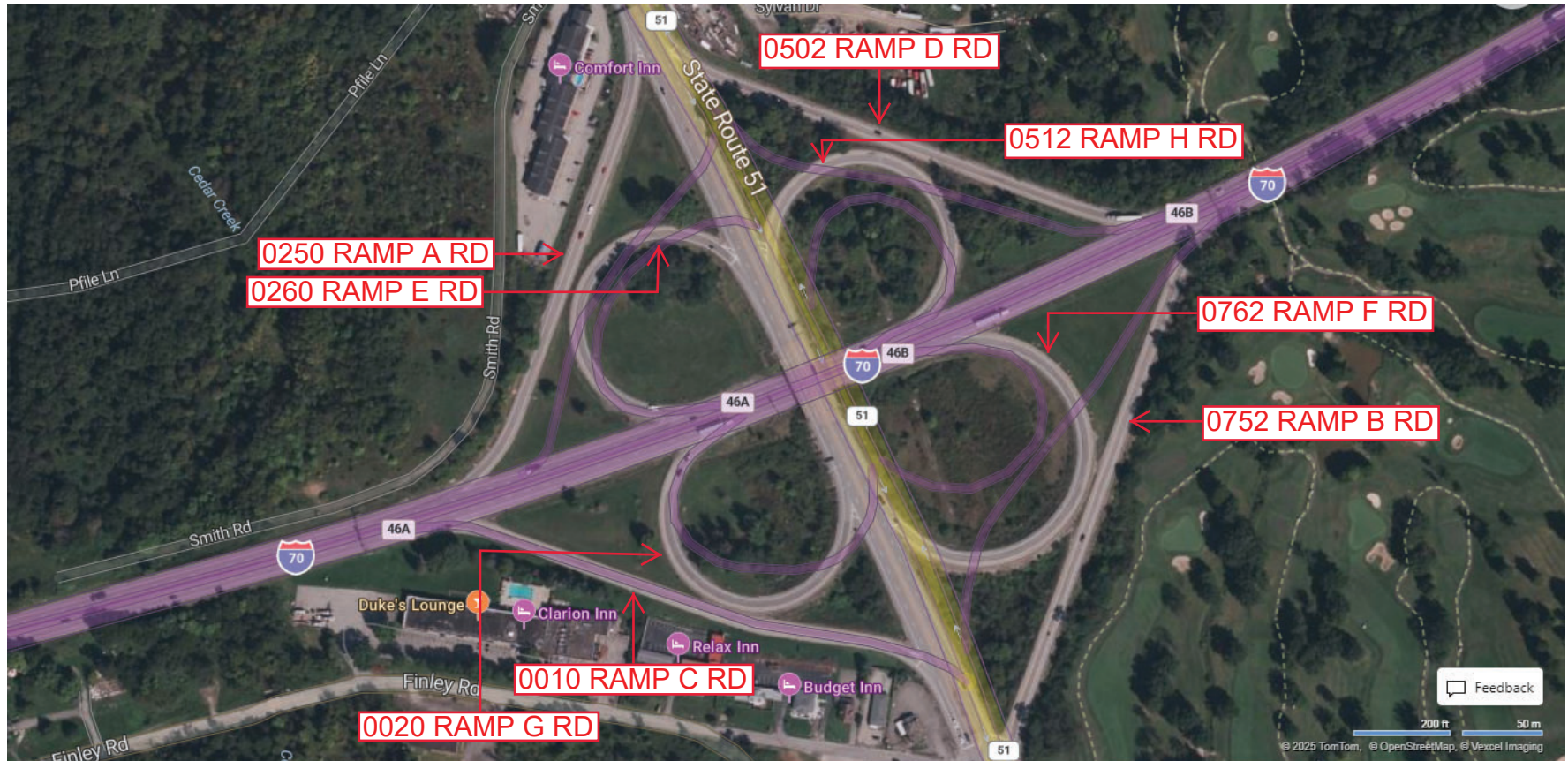
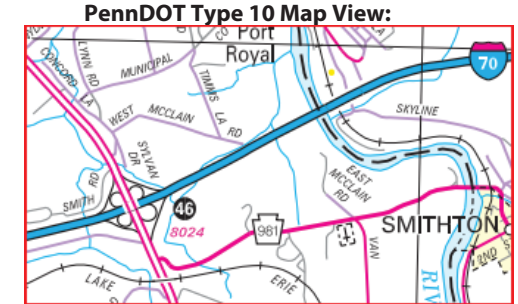
Intersecting SR's: **I-70 & PA 51**

Ramp Segment Number and Ramp Segment Length Information:

Segment	Length	Segment	Length	Segment	Length	Segment	Length
0010	0947	0512	0685				
0020	0680	0752	1135				
0250	0890	0762	0860				
0260	0648						
0502	0991						

Primary Route Interchange Exit Number  
**46A, 46B**

Secondary Route Interchange Exit Number



Privacy Choices Consumer Health Privacy

© 2025 TomTom, © OpenStreetMap, © Vexcel Imaging

© 2025 Microsoft

Last Date Modified:

Feb 18, 2025

County: **64**

# RMS Interchange Information

Print Form

Interchange Number: **8026**

Bureau of Maintenance & Operations  
Roadway Management Division



Interchange Name: **SMITHTON**

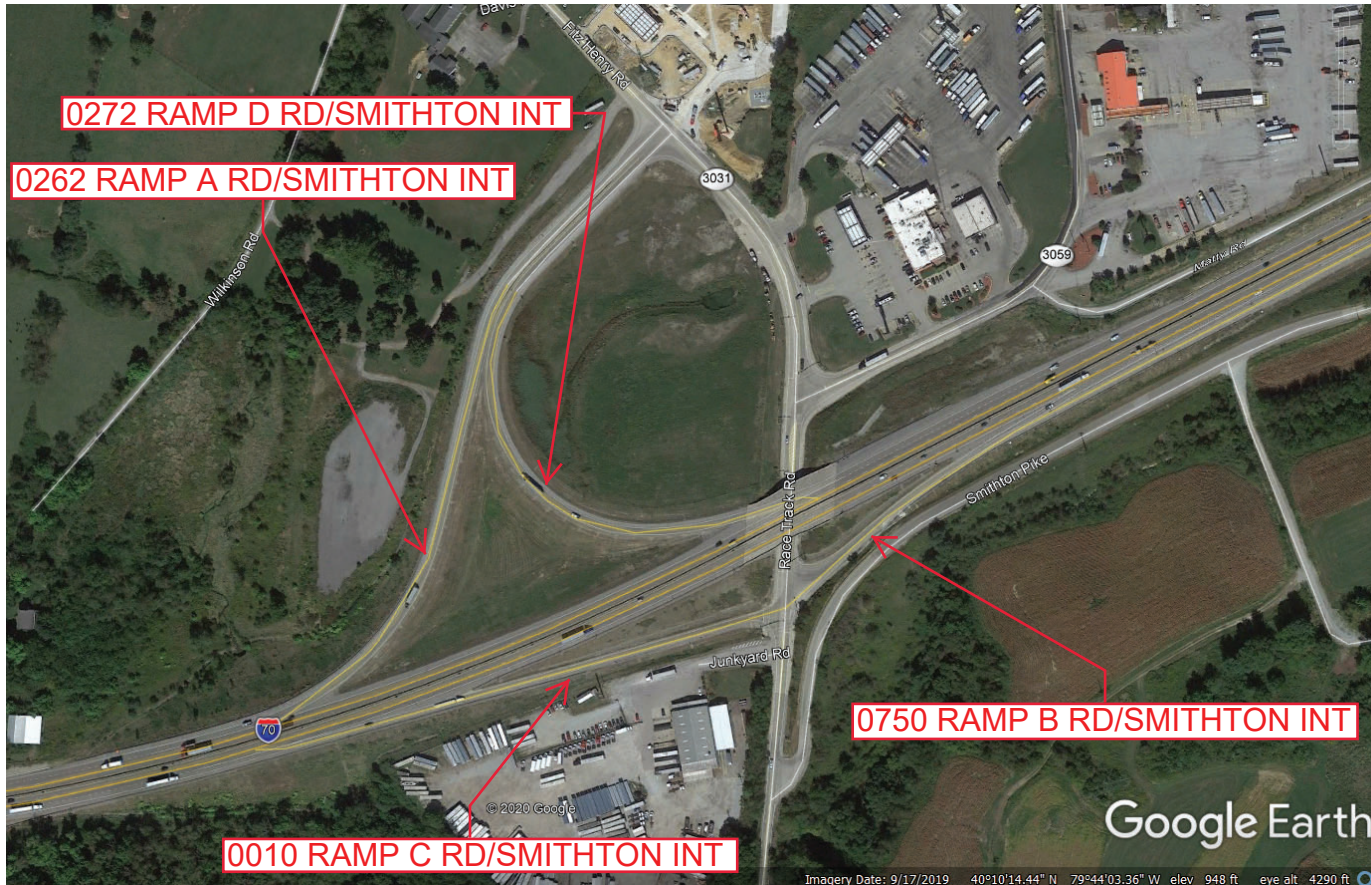
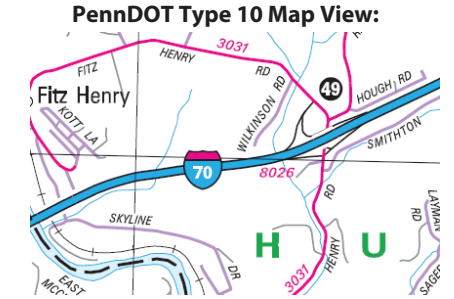
Intersecting SR's: **I 70 & SR 3031 Fitz Henry Rd**

Ramp Segment Number and Ramp Segment Length Information:

Segment	Length	Segment	Length	Segment	Length	Segment	Length
<b>0010</b>	<b>0745</b>						
<b>0262</b>	<b>1500</b>						
<b>0272</b>	<b>1425</b>						
<b>0750</b>	<b>0478</b>						

Primary Route Interchange Exit Number: **49**

Secondary Route Interchange Exit Number:



Last Date Modified: **Sep 16, 2020**

County: 64

# RMS Interchange Information

Print Form

Interchange Number: 8028

Bureau of Maintenance & Operations  
Roadway Management Division



Interchange Name: WEST NEWTON

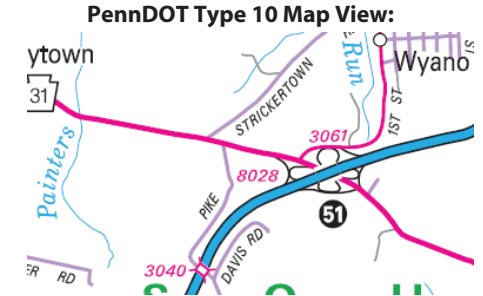
Intersecting SR's: I-70, PA 31 & SR 3061 Turner Valley Rd

Ramp Segment Number and Ramp Segment Length Information:

Segment	Length	Segment	Length	Segment	Length	Segment	Length
0010	0886	0520	0234				
0020	0671	0750	0323				
0250	0442	0760	0353				
0260	0376						
0510	0277						

Primary Route Interchange Exit Number: 51A/51B

Secondary Route Interchange Exit Number



INTERCHANGE CURRENTLY UNDER CONSTRUCTION.  
THIS IMAGE MATCHES RMS AS OF 5/20/2020

Last Date Modified:

May 20, 2020

County: **64**

# RMS Interchange Information

Print Form

Interchange Number: **8030**

Bureau of Maintenance & Operations  
Asset Management Division



Interchange Name: **YUKON INT**

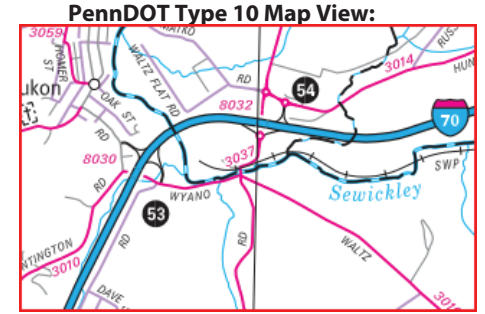
Intersecting SR's: **I-70, SR 3010 Wyono Waltz Mill Rd 7 Waltz Mill Rd**

Ramp Segment Number and Ramp Segment Length Information:

Segment	Length	Segment	Length	Segment	Length	Segment	Length
<b>0500</b>	<b>0760</b>						
<b>0510</b>	<b>0825</b>						
<b>0750</b>	<b>0980</b>						
<b>0760</b>	<b>1205</b>						

Primary Route Interchange Exit Number: **53**

Secondary Route Interchange Exit Number:



Privacy Choices Consumer Health Privacy

Last Date Modified: **Jan 16, 2025**

© 2025 Microsoft

County: **64**

# RMS Interchange Information

Print Form

Interchange Number: **8032**

Bureau of Maintenance & Operations  
Asset Management Division



Interchange Name: **WALTZS MILL INT**

Intersecting SR's: **I-70, SR 3014 Hunkler Rd & SR 3037 Waltz Mill Rd**

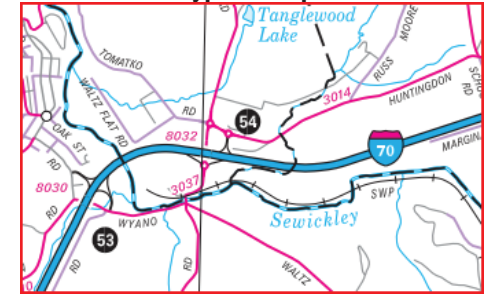
Ramp Segment Number and Ramp Segment Length Information:

Segment	Length	Segment	Length	Segment	Length	Segment	Length
<b>0010</b>	<b>0730</b>						
<b>0502</b>	<b>0580</b>						
<b>0512</b>	<b>0570</b>						
<b>0750</b>	<b>0725</b>						

Primary Route Interchange Exit Number: **54**

Secondary Route Interchange Exit Number:

PennDOT Type 10 Map View:



Feedback

200 ft 50 m

© 2025 TomTom, © OpenStreetMap, © Vexcel Imaging

© 2025 Microsoft

Privacy Choices Consumer Health Privacy

Last Date Modified: **Feb 19, 2025**

County: **64**

# RMS Interchange Information

Bureau of Maintenance & Operations  
Asset Management Division

Print Form



Interchange Number: **8034**

Interchange Name: **NEW STANTON INT**

Intersecting SR's: **I-70, SR 3089 Buttermore Av & SR 3046 Pennsylvania Av**

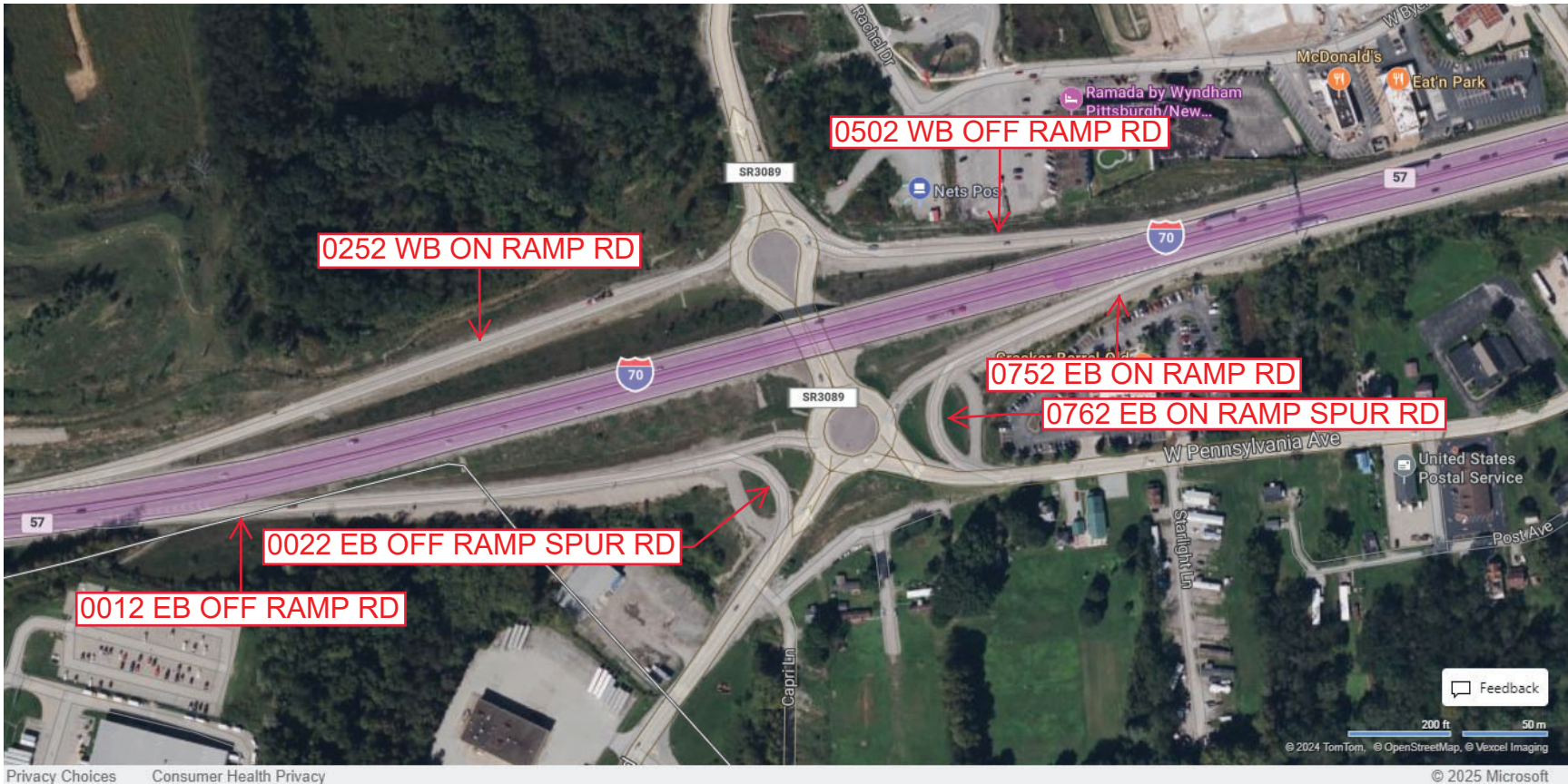
Ramp Segment Number and Ramp Segment Length Information:

Segment	Length	Segment	Length	Segment	Length	Segment	Length
<b>0012</b>	<b>1197</b>	<b>0762</b>	<b>0205</b>				
<b>0022</b>	<b>0160</b>						
<b>0252</b>	<b>1305</b>						
<b>0502</b>	<b>0585</b>						
<b>0752</b>	<b>0513</b>						

Primary Route Interchange Exit Number: **57**

Secondary Route Interchange Exit Number

PennDOT Type 10 Map View:



Last Date Modified:

Jan 16, 2025



County: 64

# RMS Interchange Information

Print Form

Interchange Number: 8038

Bureau of Maintenance & Operations  
Asset Management Division



Interchange Name: US 22 & PA 66

Intersecting SR's: SU 22 & PA 66

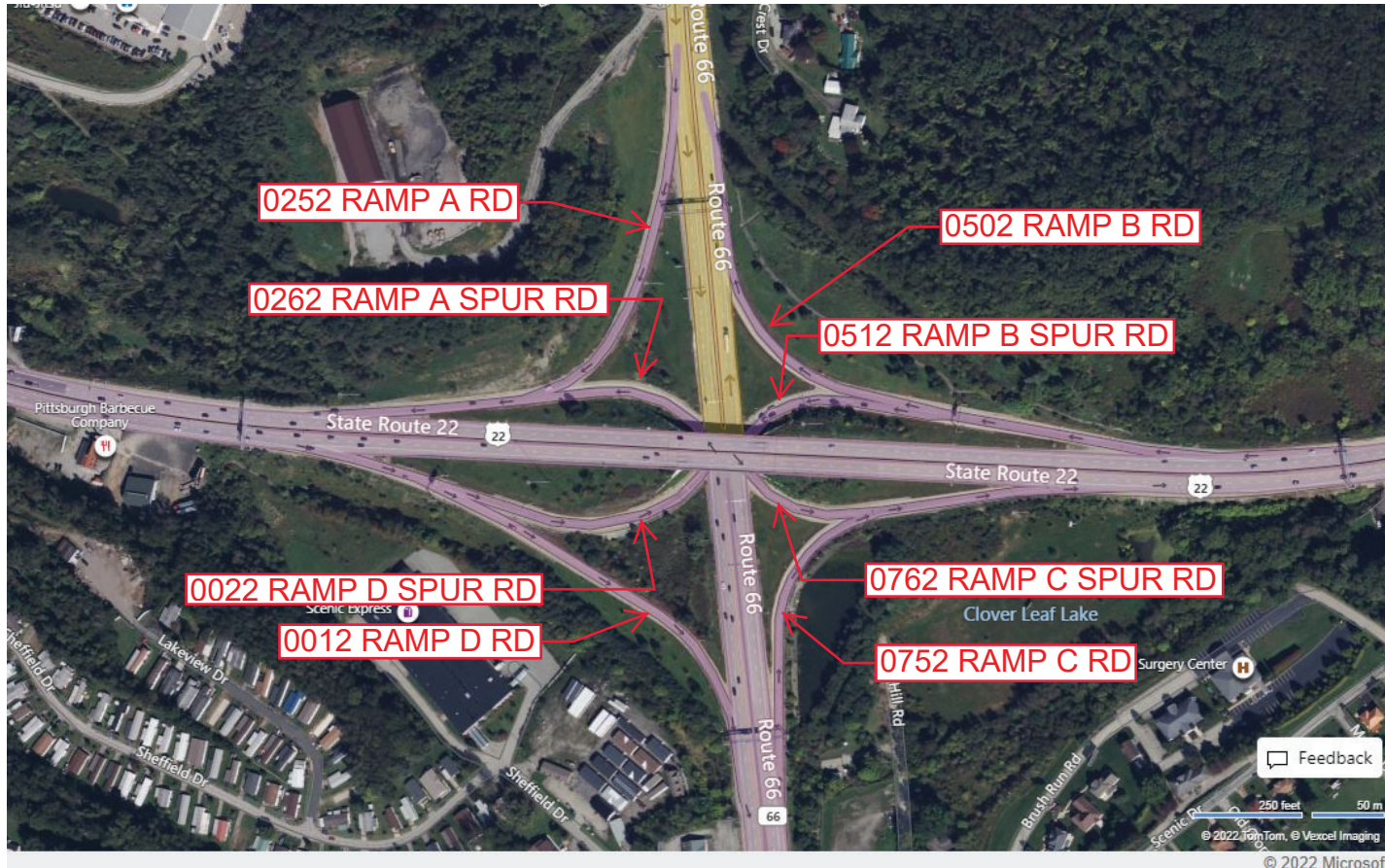
Ramp Segment Number and Ramp Segment Length Information:

Segment	Length	Segment	Length	Segment	Length	Segment	Length
0012	0990	0512	0185				
0022	0490	0752	0810				
0252	0910	0762	0200				
0262	0290						
0502	0955						

Primary Route Interchange Exit Number: 14

Secondary Route Interchange Exit Number

PennDOT Type 10 Map View:



Last Date Modified:

Sep 14, 2022

County: 64

# RMS Interchange Information

Print Form

Interchange Number: 8042

Bureau of Maintenance & Operations  
Asset Management Division



Interchange Name: GOLDEN MILE HW INT

Intersecting SR's: PA 380, PA 400 Golden Mile Hw & PA 366 Greensburg Rd

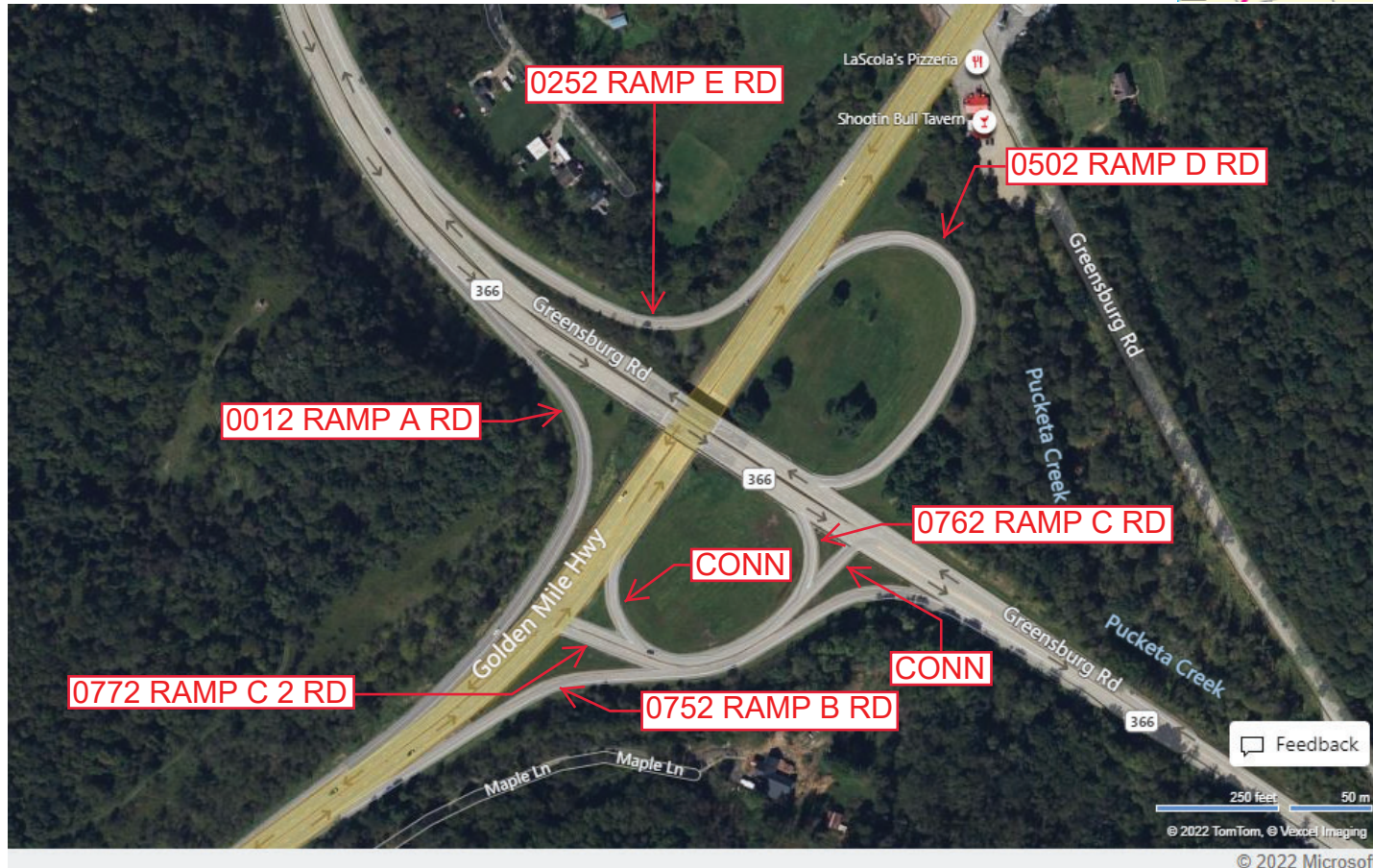
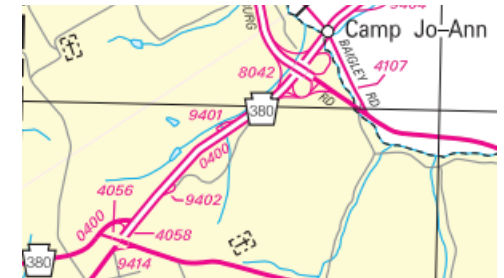
Ramp Segment Number and Ramp Segment Length Information:

Segment	Length	Segment	Length	Segment	Length	Segment	Length
0012	0788	0772	0215				
0252	0750						
0502	0875						
0752	1097						
0762	0722						

Primary Route  
Interchange Exit  
Number

Secondary Route  
Interchange Exit  
Number

PennDOT Type 10 Map View:



Feedback

250 feet 50 m  
© 2022 TomTom, © Vexcel Imaging

© 2022 Microsoft

Last Date Modified:

Sep 14, 2022

County: 64

# RMS Interchange Information

Print Form

Interchange Number: 8044

Bureau of Maintenance & Operations  
Asset Management Division



Interchange Name: NORTH WASHINGTON INT

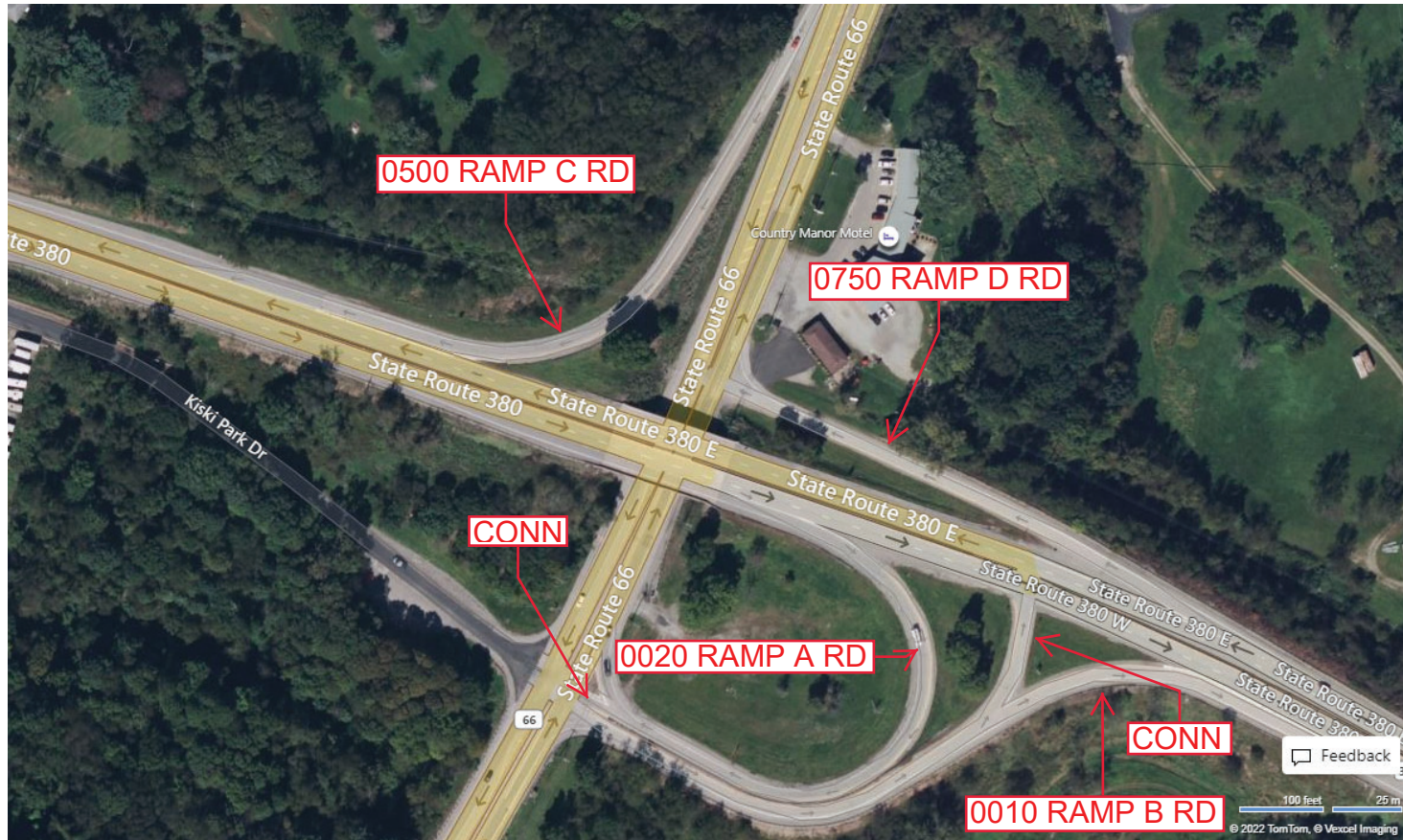
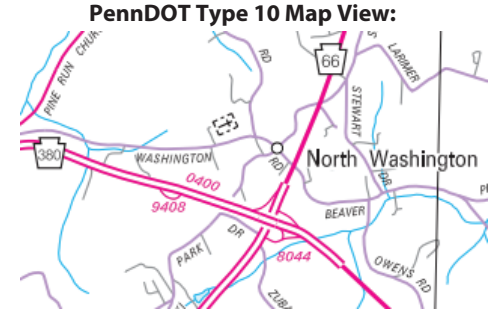
Intersecting SR's: PA 66, PA 380, PA 400 & Kiski Park Dr

Ramp Segment Number and Ramp Segment Length Information:

Segment	Length	Segment	Length	Segment	Length	Segment	Length
0010	0849						
0020	0680						
0500	0590						
0750	0457						

Primary Route Interchange Exit Number

Secondary Route Interchange Exit Number



Last Date Modified:

Sep 16, 2022

County: 64

# RMS Interchange Information

Print Form

Interchange Number: 8046

Bureau of Maintenance & Operations  
Asset Management Division



Interchange Name: BANCO PARK DR INT

Intersecting SR's: US 30 Lincoln Hw & Main St

Ramp Segment Number and Ramp Segment Length Information:

Segment	Length	Segment	Length	Segment	Length	Segment	Length
0750	0425						
0760	0485						

Primary Route Interchange Exit Number

Secondary Route Interchange Exit Number

PennDOT Type 10 Map View:



Feedback

50 feet 20 m  
© 2022 TomTom, © GeoEye Imaging

© 2022 Microsoft

Last Date Modified:

Sep 22, 2022

County: 64

# RMS Interchange Information

Print Form

Bureau of Maintenance & Operations  
Asset Management Division



Interchange Number: 8062

Interchange Name: MON CITY INT

Intersecting SR's: PA 906 Webster Rd & SR 3013 Vance Del Cas Hw

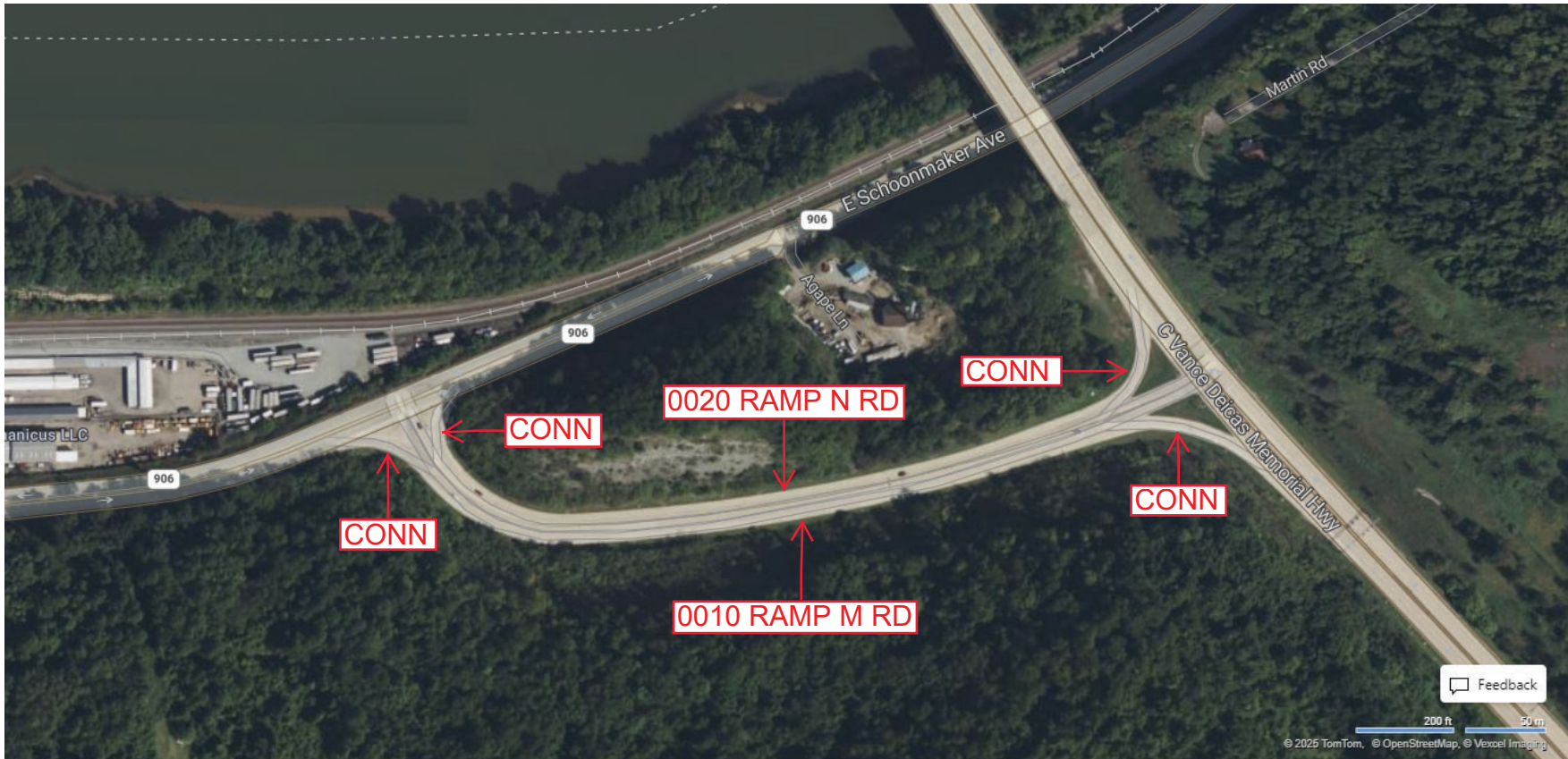
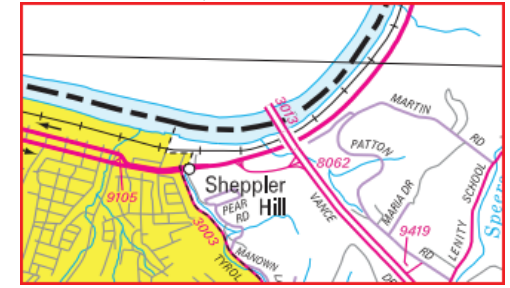
Ramp Segment Number and Ramp Segment Length Information:

Segment	Length	Segment	Length	Segment	Length	Segment	Length
0010	1790						
0020	1765						

Primary Route Interchange Exit Number

Secondary Route Interchange Exit Number

PennDOT Type 10 Map View:



County: **64**

# RMS Interchange Information

Print Form

Interchange Number: **8064**

Bureau of Maintenance & Operations  
Asset Management Division



Interchange Name: **PLEASANT UNITY INT**

Intersecting SR's: **US 30 Lincoln Hw & PA 130 Humphrey Rd**

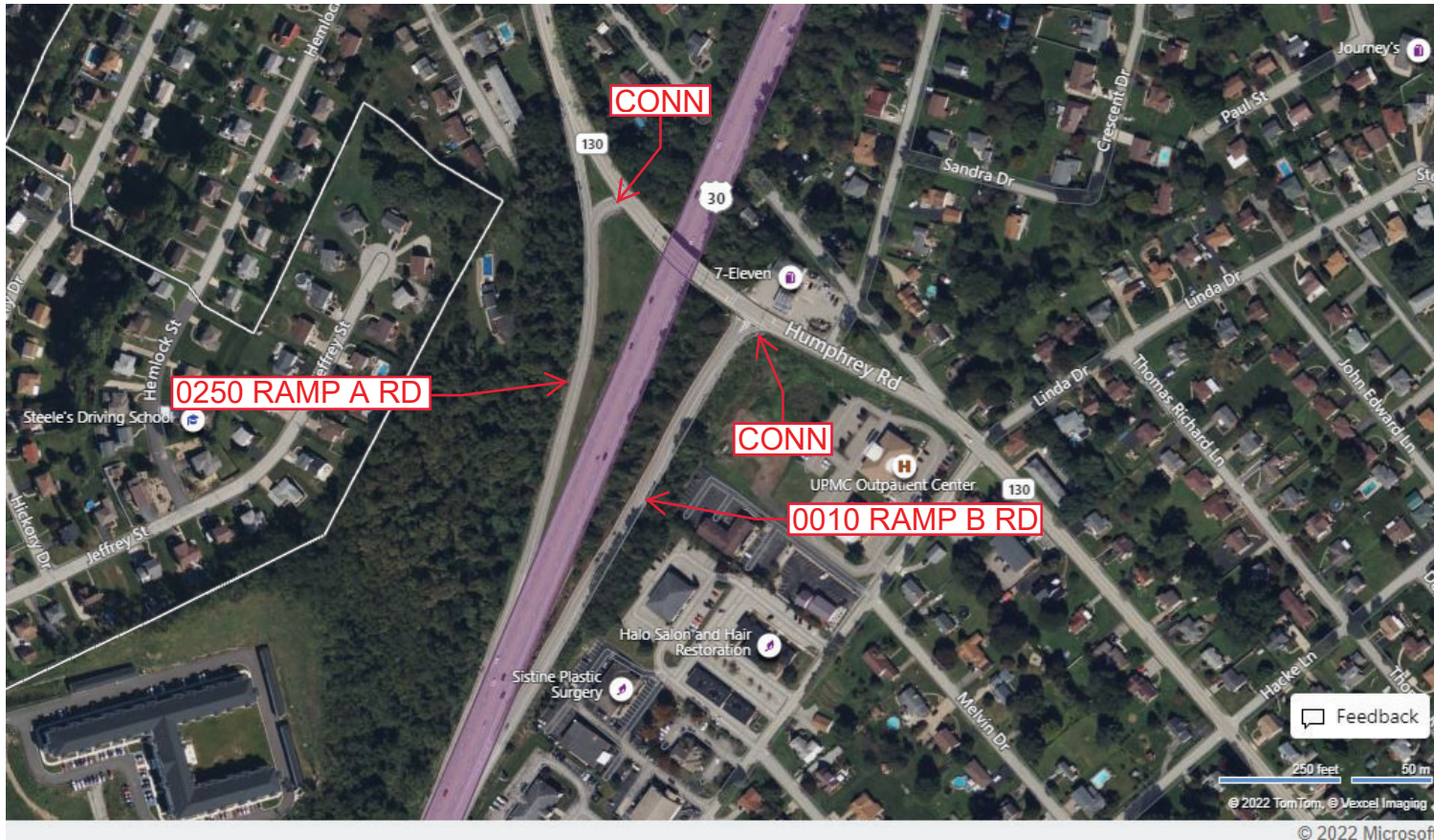
Ramp Segment Number and Ramp Segment Length Information:

Segment	Length	Segment	Length	Segment	Length	Segment	Length
<b>0010</b>	<b>1053</b>						
<b>0250</b>	<b>0861</b>						

Primary Route  
Interchange Exit  
Number

Secondary Route  
Interchange Exit  
Number

PennDOT Type 10 Map View:



Feedback

© 2022 TomTom, © Vexcel Imaging

© 2022 Microsoft

Last Date Modified:

Sep 23, 2022

County: **64**

# RMS Interchange Information

Print Form

Interchange Number: **8066**

Bureau of Maintenance & Operations  
Asset Management Division



Interchange Name: **NEW KENSINGTON**

Intersecting SR's: **PA 56 Fifty Six Bp & PA 366 Tarentum Rd**

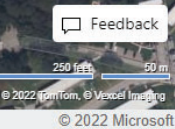
Ramp Segment Number and Ramp Segment Length Information:

Segment	Length	Segment	Length	Segment	Length	Segment	Length
<b>0250</b>	<b>1372</b>						
<b>0500</b>	<b>0510</b>						

Primary Route Interchange Exit Number

Secondary Route Interchange Exit Number

PennDOT Type 10 Map View:



Last Date Modified:

Sep 23, 2022

County: 64

# RMS Interchange Information

Print Form

Interchange Number: 9102

Bureau of Maintenance & Operations  
Asset Management Division



Interchange Name: SR 2043 WYE

Intersecting SR's: US 30 Lincoln Hw & SR 2043 Darlington Rector Rd

Ramp Segment Number and Ramp Segment Length Information:

Segment	Length	Segment	Length	Segment	Length	Segment	Length
0010	0295						

Primary Route  
Interchange Exit  
Number

Secondary Route  
Interchange Exit  
Number

PennDOT Type 10 Map View:



Last Date Modified:

Sep 26, 2022



County: **64**

# RMS Interchange Information

Print Form

Interchange Number: **9104**

Bureau of Maintenance & Operations  
Asset Management Division



Interchange Name: **WYE CONNECTOR RD**

Intersecting SR's: **PA 66**

Ramp Segment Number and Ramp Segment Length Information:

Segment	Length	Segment	Length	Segment	Length	Segment	Length
<b>0010</b>	<b>0200</b>						

Primary Route  
Interchange Exit  
Number

Secondary Route  
Interchange Exit  
Number

PennDOT Type 10 Map View:



Feedback

50 feet 20 m

© 2022 TomTom, © Vexcel Imaging

© 2022 Microsoft

Last Date Modified:

Sep 26, 2022

County: 64

# RMS Interchange Information

Print Form

Interchange Number: 9105

Bureau of Maintenance & Operations  
Asset Management Division



Interchange Name: PA 906

Intersecting SR's: PA 906 Donner Av/Eastgate Av & Parente Bl

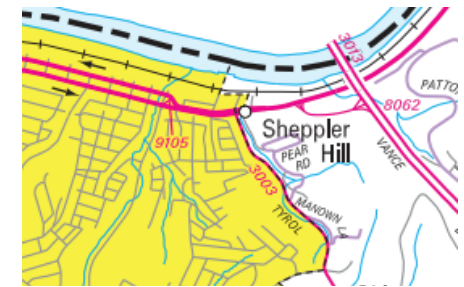
Ramp Segment Number and Ramp Segment Length Information:

Segment	Length	Segment	Length	Segment	Length	Segment	Length
0010	0216						

Primary Route Interchange Exit Number

Secondary Route Interchange Exit Number

PennDOT Type 10 Map View:



Feedback

© 2022 TomTom, © Vexcel Imaging

© 2022 Microsoft

Last Date Modified:

Sep 26, 2022

County: **64**

# RMS Interchange Information

Print Form

Interchange Number: **9106**

Bureau of Maintenance & Operations  
Asset Management Division



Interchange Name: **PA 356 WYE**

Intersecting SR's: **PA 56 Leechburg Rd & PA 356 Garvers Ferry Rd**

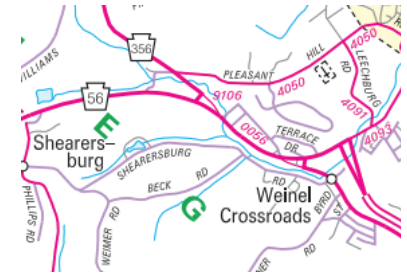
Ramp Segment Number and Ramp Segment Length Information:

Segment	Length	Segment	Length	Segment	Length	Segment	Length
<b>0010</b>	<b>0360</b>						

Primary Route Interchange Exit Number

Secondary Route Interchange Exit Number

PennDOT Type 10 Map View:



Feedback

50 feet 20 m  
© 2022 TomTom, © Vexxel Imaging

© 2022 Microsoft

Last Date Modified:

Sep 26, 2022

County: 64

# RMS Interchange Information

Print Form

Interchange Number: 9109

Bureau of Maintenance & Operations  
Asset Management Division



Interchange Name: PA 201 WYE

Intersecting SR's: PA 201 Rostraver Rd & Hurst Rd

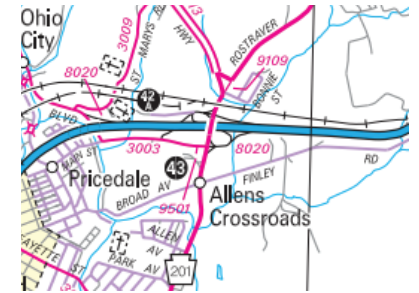
Ramp Segment Number and Ramp Segment Length Information:

Segment	Length	Segment	Length	Segment	Length	Segment	Length
0010	0230						

Primary Route Interchange Exit Number

Secondary Route Interchange Exit Number

PennDOT Type 10 Map View:



Last Date Modified:

Sep 26, 2022

County: 64

# RMS Interchange Information

Print Form

Interchange Number: 9110

Bureau of Maintenance & Operations  
Asset Management Division



Interchange Name: US 22 & OLD WILLIAM PENN HW WYE

Intersecting SR's: US 22 William Penn Hw & Old William Penn Hw

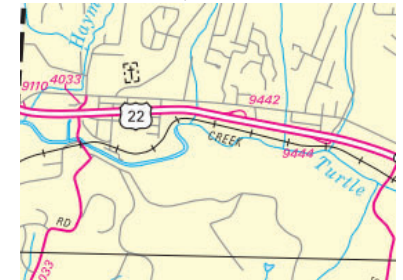
Ramp Segment Number and Ramp Segment Length Information:

Segment	Length	Segment	Length	Segment	Length	Segment	Length
0010	0190						

Primary Route Interchange Exit Number

Secondary Route Interchange Exit Number

PennDOT Type 10 Map View:



Feedback

50 feet 20 m

© 2022 TomTom, © Vexcel Imaging

© 2022 Microsoft

Last Date Modified:

Sep 26, 2022

County: 64

# RMS Interchange Information

Print Form

Interchange Number: 9301

Bureau of Maintenance & Operations  
Asset Management Division



Interchange Name: US 30 TRUCK ESCAPE RAMP

Intersecting SR's: US 30 Lincoln Hw

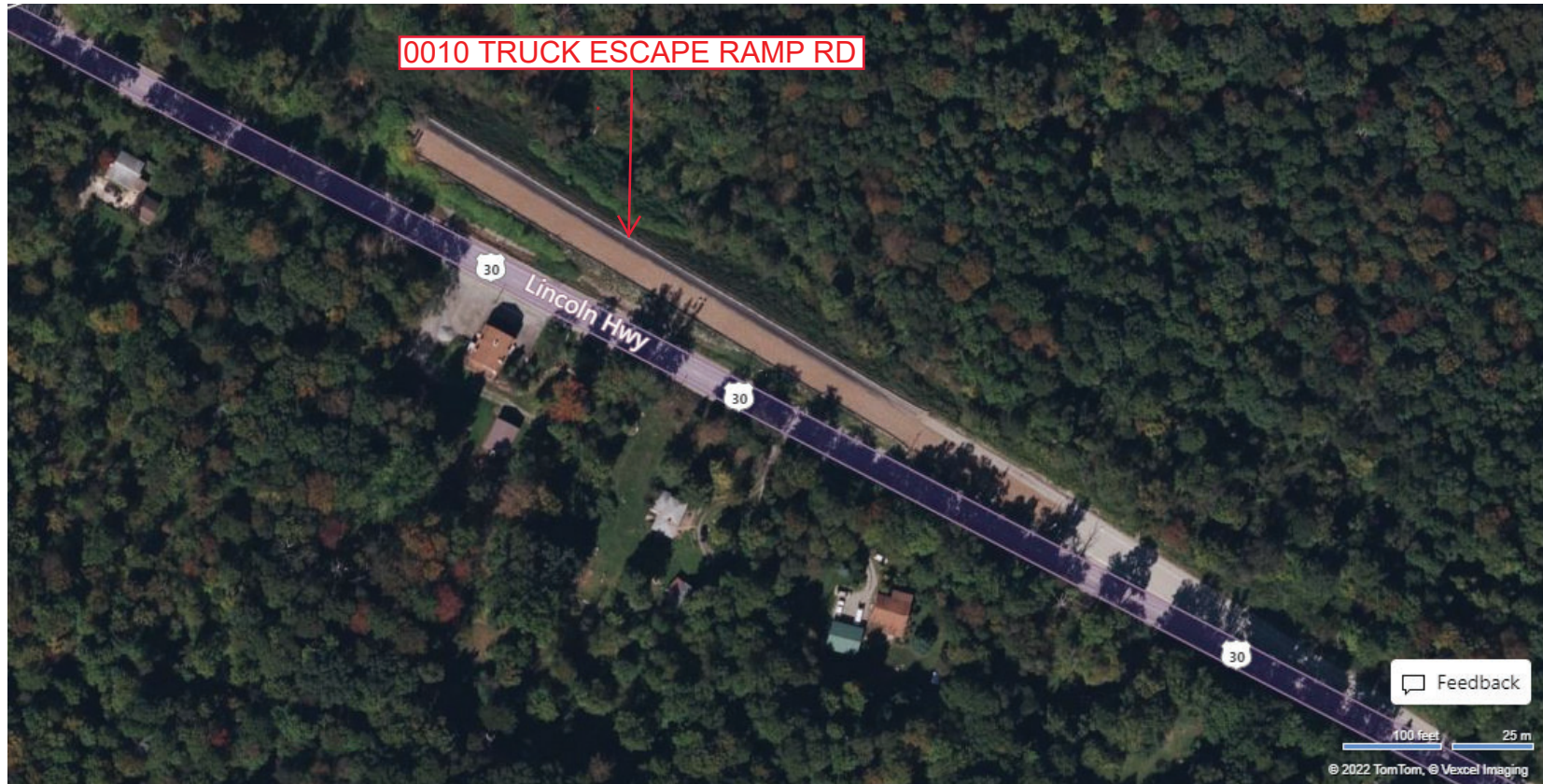
Ramp Segment Number and Ramp Segment Length Information:

Segment	Length	Segment	Length	Segment	Length	Segment	Length
0010	0800						

Primary Route  
Interchange Exit  
Number

Secondary Route  
Interchange Exit  
Number

PennDOT Type 10 Map View:



Feedback

100 feet 25 m

© 2022 TomTom, © Vexcel Imaging

© 2022 Microsoft

Last Date Modified:

Sep 26, 2022

County: 64

# RMS Interchange Information

Bureau of Maintenance & Operations  
Asset Management Division

Print Form



Interchange Number: 9303

Interchange Name: PA 31 TRUCK ESCAPE RAMP

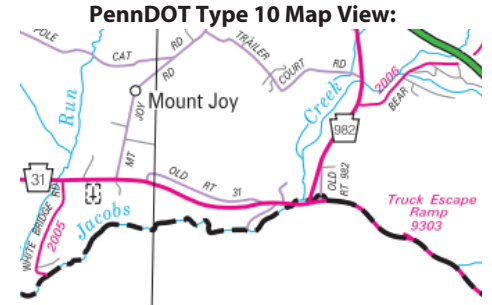
Intersecting SR's: PA 31 Three Mile Hill Rd

Ramp Segment Number and Ramp Segment Length Information:

Segment	Length	Segment	Length	Segment	Length	Segment	Length
0010	0503						

Primary Route Interchange Exit Number

Secondary Route Interchange Exit Number



Feedback

100 feet 25 m  
© 2022 TomTom, © Vexcel Imaging  
© 2022 Microsoft

Last Date Modified:

Sep 26, 2022

County: 64

# RMS Interchange Information

Print Form

Interchange Number: 9400

Bureau of Maintenance & Operations  
Asset Management Division



Interchange Name: US 30 TRUCK PULLOFF RD

Intersecting SR's: US 30 Lincoln Hw

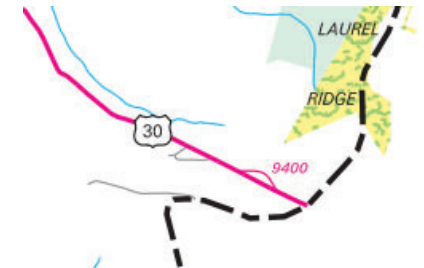
Ramp Segment Number and Ramp Segment Length Information:

Segment	Length	Segment	Length	Segment	Length	Segment	Length
0010	0608						

Primary Route Interchange Exit Number

Secondary Route Interchange Exit Number

PennDOT Type 10 Map View:



Feedback  
100 feet 25 m  
© 2022 TomTom, © Vexcel Imaging  
© 2022 Microsoft

Last Date Modified: Sep 29, 2022



County: **64**

# RMS Interchange Information

Print Form

Interchange Number: **9401**

Bureau of Maintenance & Operations  
Asset Management Division



Interchange Name: **PA 380 & FAIRVIEW DR JUGHANDLE**

Intersecting SR's: **PA 380 (PA 400) Mile Hw & Fairview Dr**

Ramp Segment Number and Ramp Segment Length Information:

Segment	Length	Segment	Length	Segment	Length	Segment	Length
<b>0500</b>	<b>0481</b>						

Primary Route  
Interchange Exit  
Number

Secondary Route  
Interchange Exit  
Number

PennDOT Type 10 Map View:



Feedback

50 feet 20 m  
© 2022 TomTom, © Vexcel Imaging

© 2022 Microsoft

Last Date Modified:

Sep 29, 2022

County: 64

# RMS Interchange Information

Bureau of Maintenance & Operations  
Asset Management Division

Print Form



Interchange Number: 9402

Interchange Name: PA 380 & TOOHEY RD JUGHANDLE

Intersecting SR's: PA 380 (PA 400) Mile Hw & Toohy Rd

Ramp Segment Number and Ramp Segment Length Information:

Segment	Length	Segment	Length	Segment	Length	Segment	Length
0010	0440						

Primary Route Interchange Exit Number

Secondary Route Interchange Exit Number

PennDOT Type 10 Map View:



Last Date Modified:

Sep 29, 2022

County: **64**

# RMS Interchange Information

Print Form

Interchange Number: **9403**

Bureau of Maintenance & Operations  
Asset Management Division



Interchange Name: **PA 380 & CHURCH RD JUGHANDLE**

Intersecting SR's: **PA 380 (PA 400) Mile Hw & Church Rd**

Ramp Segment Number and Ramp Segment Length Information:

Segment	Length	Segment	Length	Segment	Length	Segment	Length
<b>0500</b>	<b>0389</b>						

Primary Route  
Interchange Exit  
Number

Secondary Route  
Interchange Exit  
Number

PennDOT Type 10 Map View:



Last Date Modified:

Sep 29, 2022

County: 64

# RMS Interchange Information

Print Form

Interchange Number: 9404

Bureau of Maintenance & Operations  
Asset Management Division



Interchange Name: PA 380 JUGHANDLE

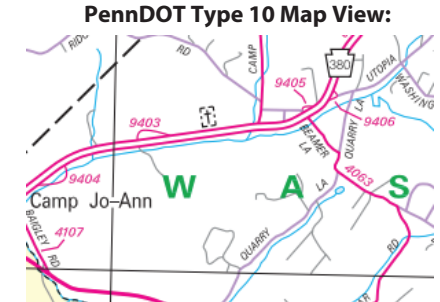
Intersecting SR's: PA 380 (PA 400) Mile Hw

Ramp Segment Number and Ramp Segment Length Information:

Segment	Length	Segment	Length	Segment	Length	Segment	Length
0010	0429						

Primary Route Interchange Exit Number

Secondary Route Interchange Exit Number



Feedback

50 feet 20 m

© 2022 TomTom, © Vexcel Imaging

© 2022 Microsoft

Last Date Modified: Sep 30, 2022

County: **64**

# RMS Interchange Information

Print Form

Interchange Number: **9405**

Bureau of Maintenance & Operations  
Asset Management Division



Interchange Name: **PA 380 & SR 4063 JUGHANDLE**

Intersecting SR's: **PA 380 (PA 400) Mile Hw, Beamer Ln & Wilma Dr**

Ramp Segment Number and Ramp Segment Length Information:

Segment	Length	Segment	Length	Segment	Length	Segment	Length
<b>0500</b>	<b>0460</b>						

Primary Route  
Interchange Exit  
Number

Secondary Route  
Interchange Exit  
Number

PennDOT Type 10 Map View:



Feedback

© 2022 TomTom, © Vexcel Imaging  
© 2022 Microsoft

Last Date Modified:

Sep 30, 2022

County: **64**

# RMS Interchange Information

Print Form

Interchange Number: **9406**

Bureau of Maintenance & Operations  
Asset Management Division



Interchange Name: **UTOPIA RD JUGHANDLE**

Intersecting SR's: **PA 380 (PA 400) Mile Hw & Utopia Rd**

Ramp Segment Number and Ramp Segment Length Information:

Segment	Length	Segment	Length	Segment	Length	Segment	Length
<b>0010</b>	<b>0280</b>						

Primary Route Interchange Exit Number

Secondary Route Interchange Exit Number

PennDOT Type 10 Map View:



Last Date Modified: **Sep 30, 2022**

County: 64

# RMS Interchange Information

Print Form

Bureau of Maintenance & Operations  
Asset Management Division



Interchange Number: 9407

Interchange Name: PA 906 & TWELFTH STREET

Intersecting SR's: PA 906 Twelfth St/Schoonmaker Av & Twelfth St

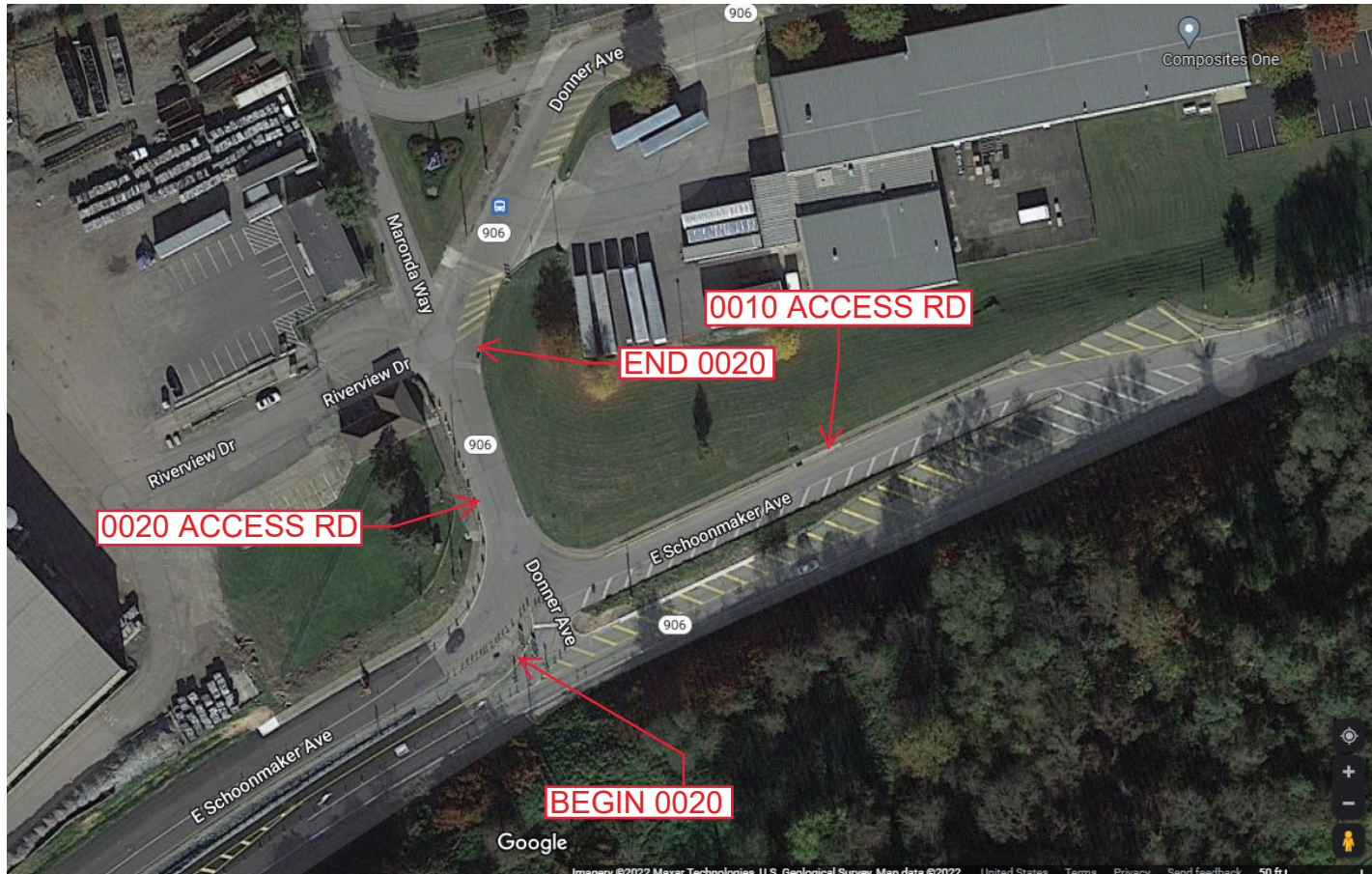
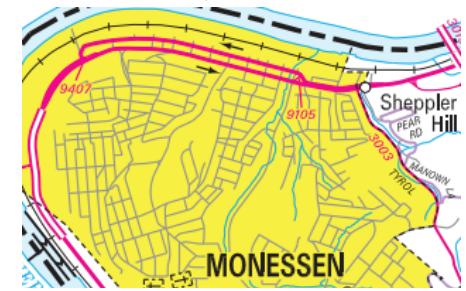
Ramp Segment Number and Ramp Segment Length Information:

Segment	Length	Segment	Length	Segment	Length	Segment	Length
0010	0355						
0020	0200						

Primary Route  
Interchange Exit  
Number

Secondary Route  
Interchange Exit  
Number

PennDOT Type 10 Map View:



Last Date Modified:

Oct 3, 2022

County: 64

# RMS Interchange Information

Print Form

Interchange Number: 9408

Bureau of Maintenance & Operations  
Asset Management Division



Interchange Name: PA 380 JUGHANDLE

Intersecting SR's: PA 380(PA400) Golden Mile Hw

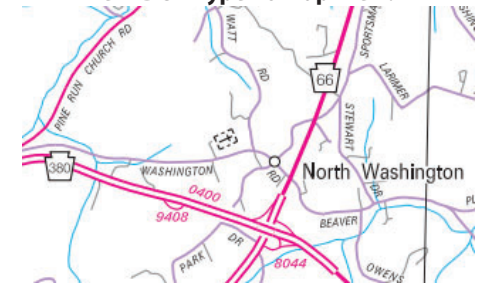
Ramp Segment Number and Ramp Segment Length Information:

Segment	Length	Segment	Length	Segment	Length	Segment	Length
0010	0420						

Primary Route  
Interchange Exit  
Number

Secondary Route  
Interchange Exit  
Number

PennDOT Type 10 Map View:



Feedback

© 2022 TomTom, © Vexcel Imaging

© 2022 Microsoft

Last Date Modified:

Oct 3, 2022



County: 64

# RMS Interchange Information

Print Form

Interchange Number: 9410

Bureau of Maintenance & Operations  
Asset Management Division



Interchange Name: US 30 JUGHANDLE

Intersecting SR's: US 30 Lincoln Hw

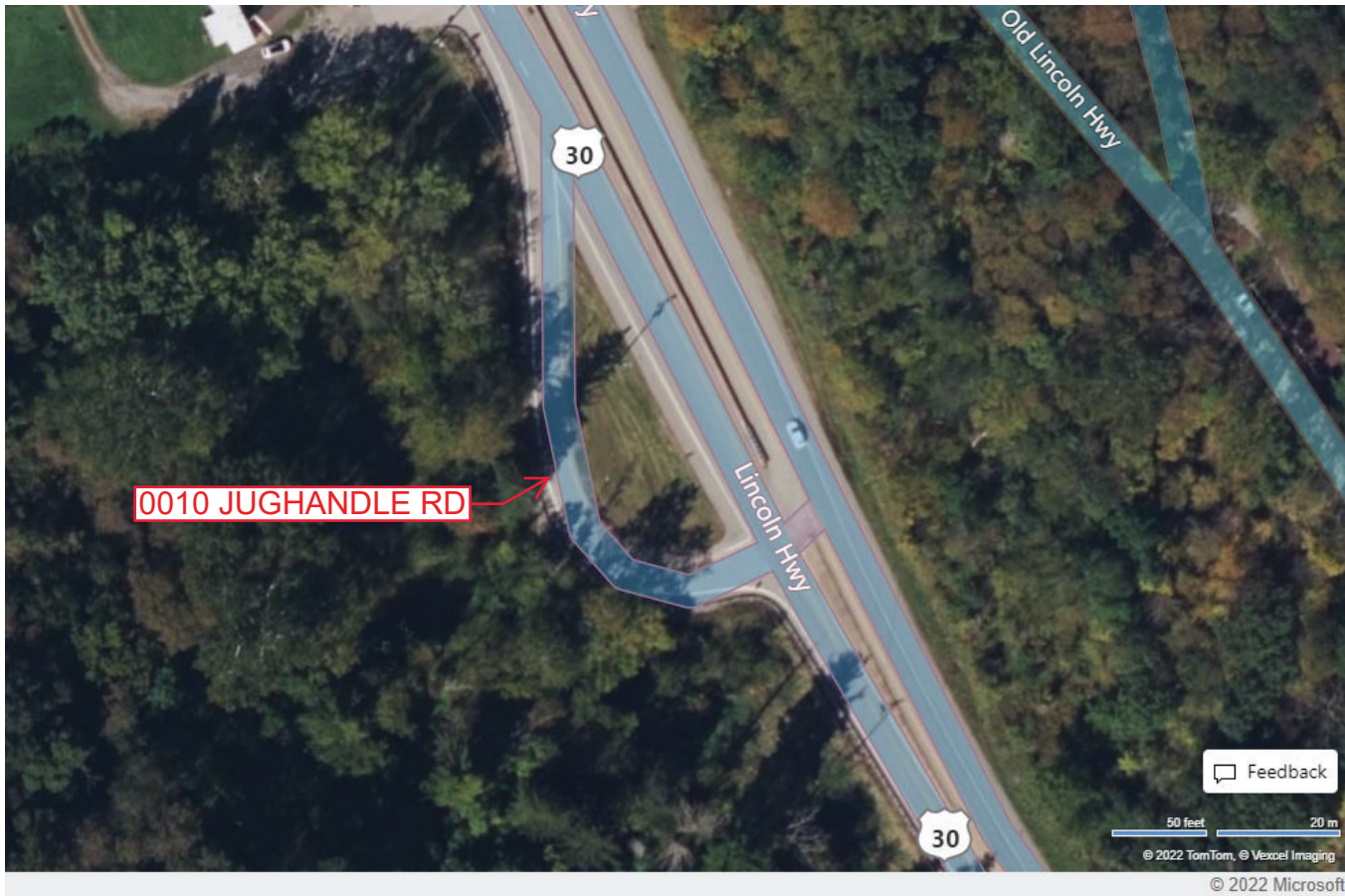
Ramp Segment Number and Ramp Segment Length Information:

Segment	Length	Segment	Length	Segment	Length	Segment	Length
0010	0275						

Primary Route  
Interchange Exit  
Number

Secondary Route  
Interchange Exit  
Number

PennDOT Type 10 Map View:



0010 JUGHANDLE RD

Feedback

50 feet 20 m  
© 2022 TomTom, © Vexcel Imaging

© 2022 Microsoft

Last Date Modified:

Oct 3, 2022

County: 64

# RMS Interchange Information

Print Form

Interchange Number: 9411

Bureau of Maintenance & Operations  
Asset Management Division



Interchange Name: US 30 & SR 2049 WYES

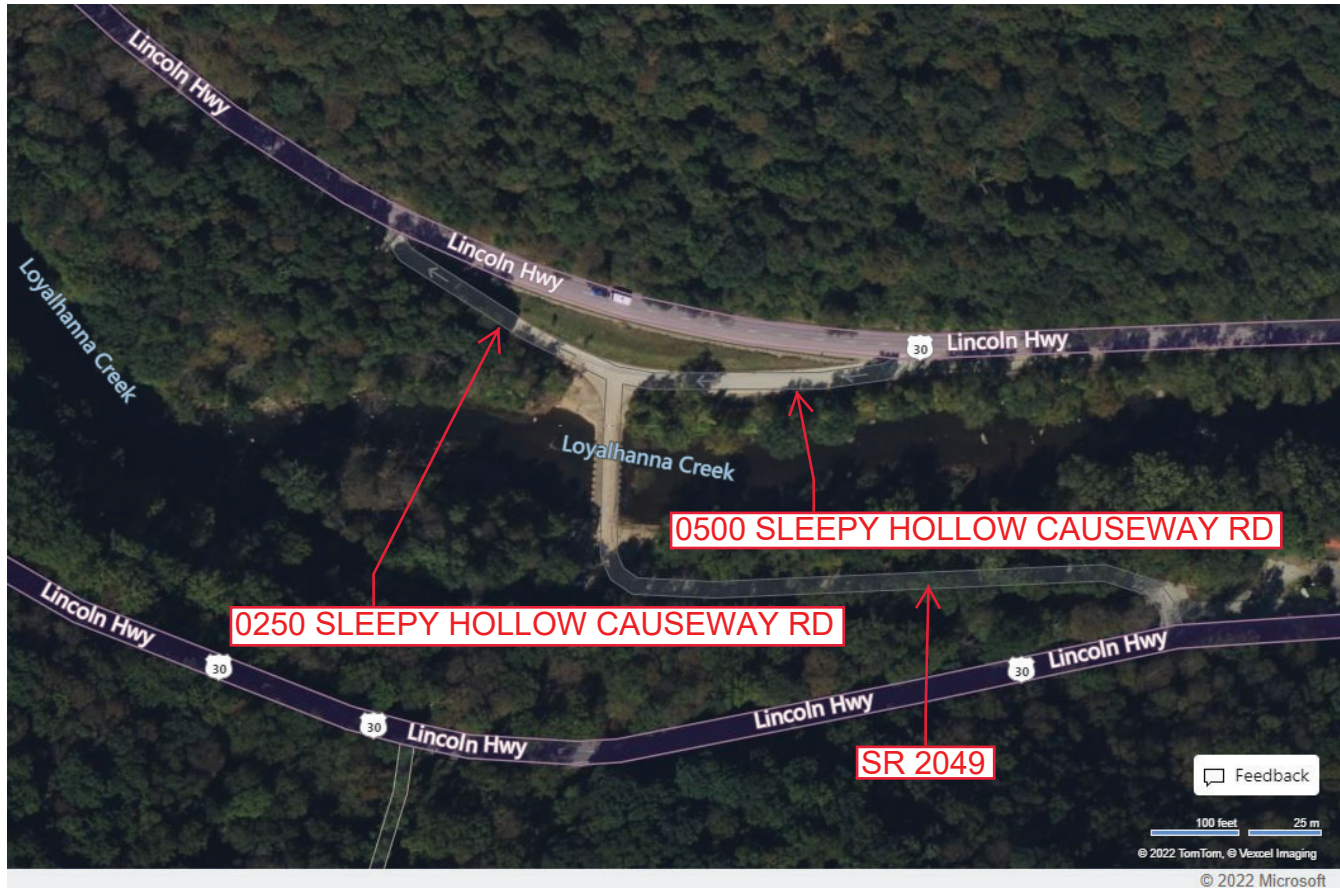
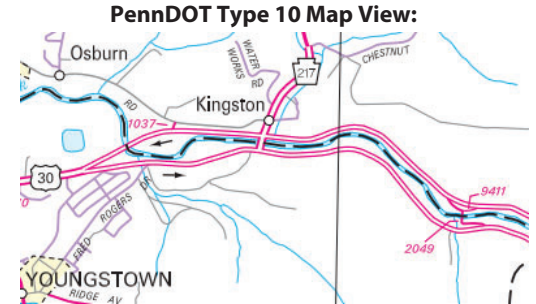
Intersecting SR's: US 30 Lincoln Hw & 2049 Sleepy Hollow Causeway Rd

Ramp Segment Number and Ramp Segment Length Information:

Segment	Length	Segment	Length	Segment	Length	Segment	Length
0250	0265						
0500	0288						

Primary Route Interchange Exit Number

Secondary Route Interchange Exit Number



Feedback

100 feet 25 m  
© 2022 TomTom, © Vexcel Imaging

© 2022 Microsoft

Last Date Modified: Oct 3, 2022

County: 64

# RMS Interchange Information

Print Form

Interchange Number: 9414

Bureau of Maintenance & Operations  
Asset Management Division



Interchange Name: PA 286 WYE

Intersecting SR's: PA 286 Golden Mile & Saltsburg Rd

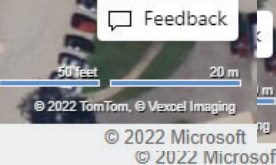
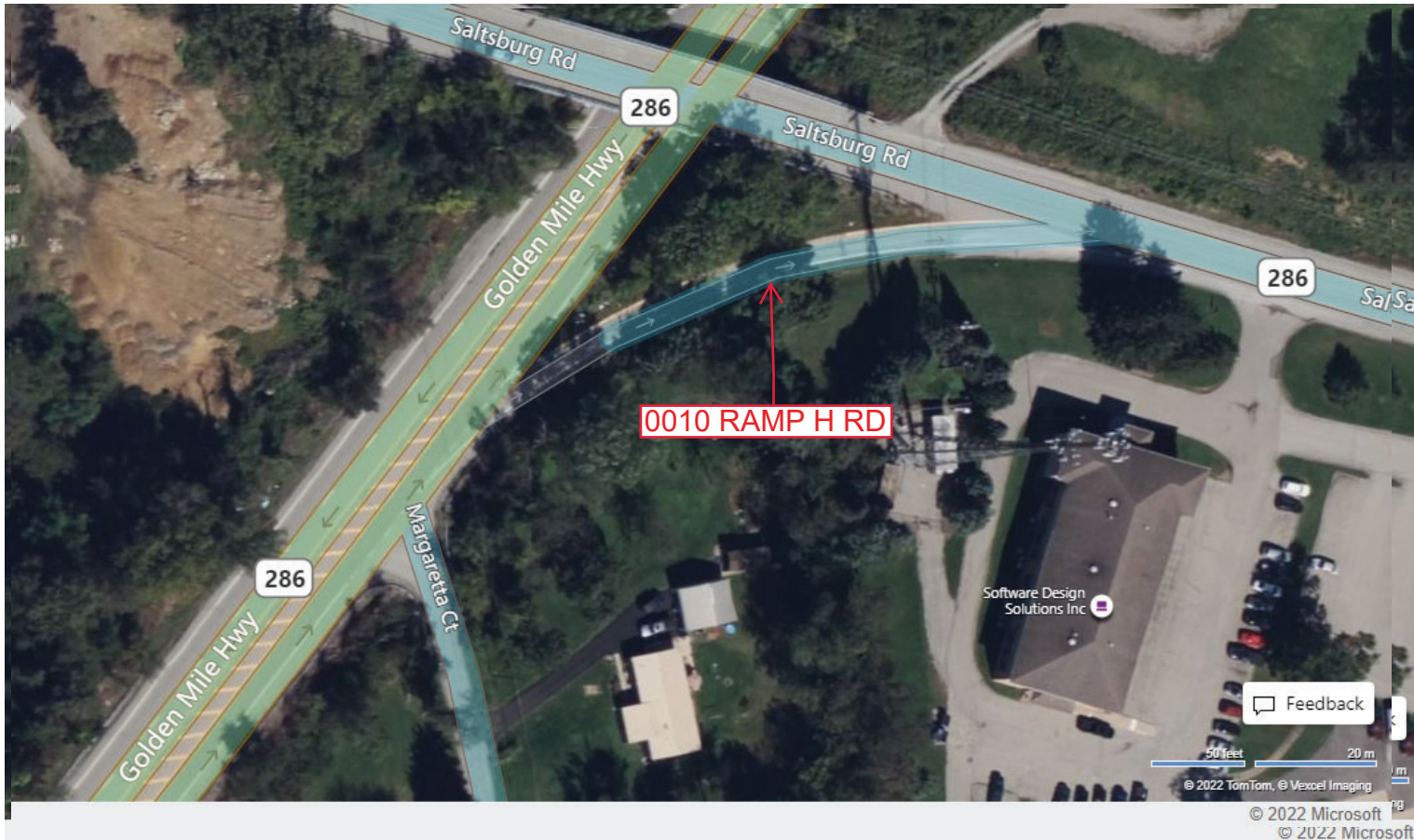
Ramp Segment Number and Ramp Segment Length Information:

Segment	Length	Segment	Length	Segment	Length	Segment	Length
0010	0250						

Primary Route Interchange Exit Number

Secondary Route Interchange Exit Number

PennDOT Type 10 Map View:



Last Date Modified: Oct 4, 2022

County: 64

# RMS Interchange Information

Print Form

Interchange Number: 9415

Bureau of Maintenance & Operations  
Asset Management Division



Interchange Name: US 22 & EAST PITTSBURGH ST JUGHANDLE #2

Intersecting SR's: US 22 William Penn Hw & East Pittsburgh St

Ramp Segment Number and Ramp Segment Length Information:

Segment	Length	Segment	Length	Segment	Length	Segment	Length
0010	0361						

Primary Route Interchange Exit Number

Secondary Route Interchange Exit Number

PennDOT Type 10 Map View:



Feedback

100 feet 25 m  
© 2022 TomTom, © Vexcel Imaging  
© 2022 Microsoft

Last Date Modified:

Oct 5, 2022

County: **64**

# RMS Interchange Information

Print Form

Interchange Number: **9417**

Bureau of Maintenance & Operations  
Asset Management Division



Interchange Name: **US 22 JUGHANDLE #4**

Intersecting SR's: **US 22 William Penn Hw & T633 Hornock Dr**

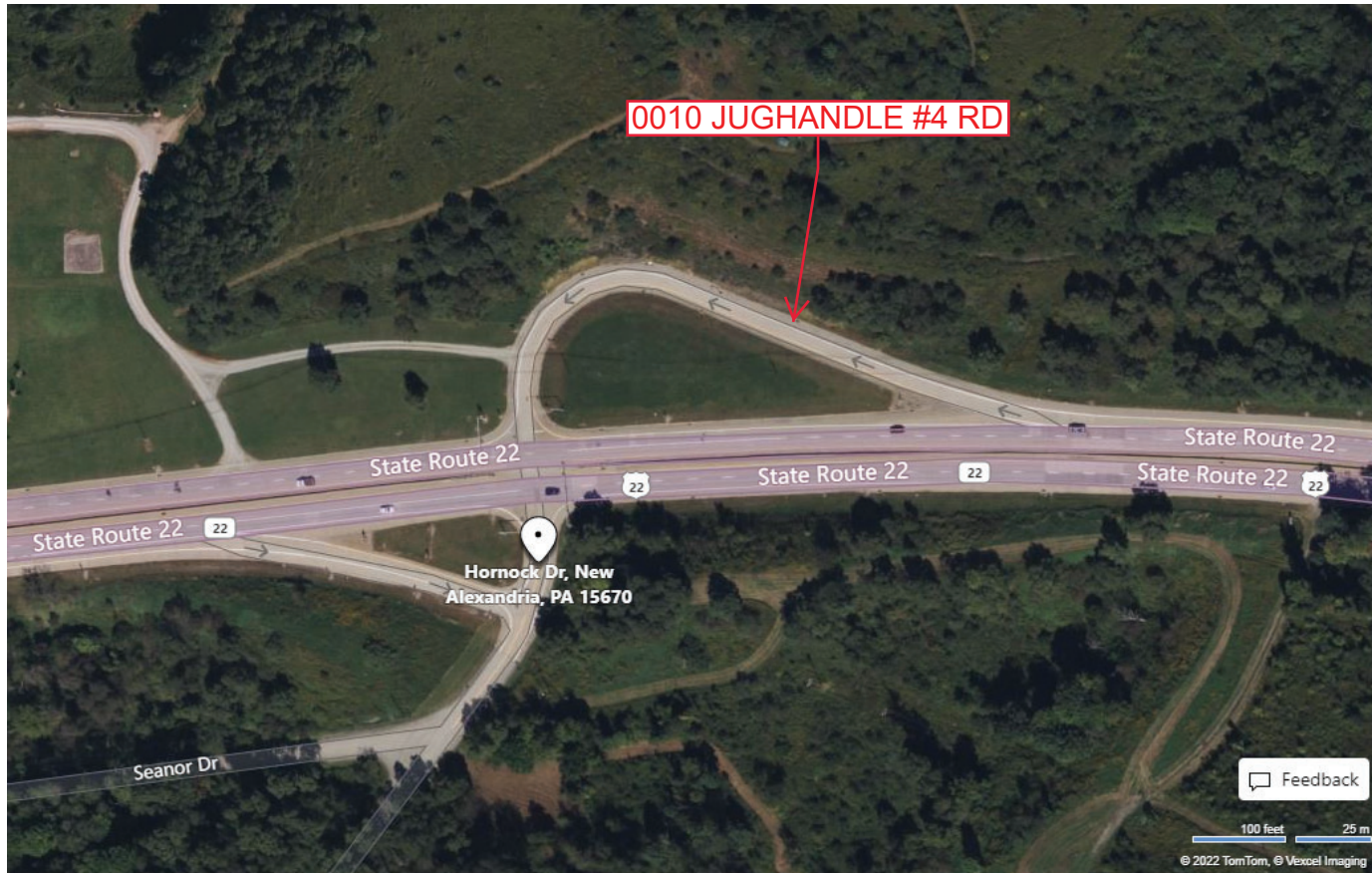
Ramp Segment Number and Ramp Segment Length Information:

Segment	Length	Segment	Length	Segment	Length	Segment	Length
<b>0010</b>	<b>0618</b>						

Primary Route Interchange Exit Number

Secondary Route Interchange Exit Number

PennDOT Type 10 Map View:



Feedback

100 feet 25 m  
© 2022 TomTom, © Vexcel Imaging

© 2022 Microsoft

Last Date Modified: **Oct 5, 2022**

County: **64**

# RMS Interchange Information

Print Form

Interchange Number: **9418**

Bureau of Maintenance & Operations  
Asset Management Division



Interchange Name: **US 22 & PITTSBURGH ST JUGHANDLE #1**

Intersecting SR's: **US 22 William Penn Hw & East Pittsburgh St**

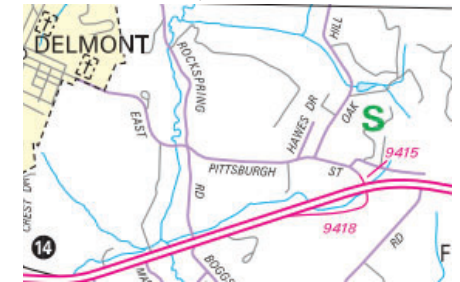
Ramp Segment Number and Ramp Segment Length Information:

Segment	Length	Segment	Length	Segment	Length	Segment	Length
<b>0010</b>	<b>0660</b>						

Primary Route  
Interchange Exit  
Number

Secondary Route  
Interchange Exit  
Number

PennDOT Type 10 Map View:



Feedback

100 feet 25 m  
© 2022 TomTom, © Vexxel Imaging

© 2022 Microsoft

Last Date Modified:

Oct 5, 2022

County: **64**

# RMS Interchange Information

Print Form

Interchange Number: **9419**

Bureau of Maintenance & Operations  
Asset Management Division



Interchange Name: **SR 3013 & T365 CONNECTOR**

Intersecting SR's: **SR 3013 Vance Del Cas Hw & T365 Patton Rd**

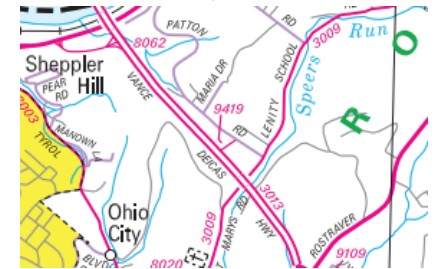
Ramp Segment Number and Ramp Segment Length Information:

Segment	Length	Segment	Length	Segment	Length	Segment	Length
<b>0010</b>	<b>0340</b>						
<b>0750</b>	<b>0335</b>						

Primary Route  
Interchange Exit  
Number

Secondary Route  
Interchange Exit  
Number

PennDOT Type 10 Map View:



Feedback

50 feet 20 m  
© 2022 TomTom, © Vexxel Imaging

© 2022 Microsoft

Last Date Modified:

Oct 5, 2022

County: 64

# RMS Interchange Information

Print Form

Interchange Number: 9420

Bureau of Maintenance & Operations  
Asset Management Division



Interchange Name: US 22 JUGHANDLE #3

Intersecting SR's: US 22 Willam Penn Hw & T633 Hornock Dr

Ramp Segment Number and Ramp Segment Length Information:

Segment	Length	Segment	Length	Segment	Length	Segment	Length
0010	0235						

Primary Route Interchange Exit Number

Secondary Route Interchange Exit Number

PennDOT Type 10 Map View:



Feedback

100 feet 25 m

© 2022 TomTom, © Vexxel Imaging

© 2022 Microsoft

Last Date Modified:

Oct 5, 2022



County: 64

# RMS Interchange Information

Print Form

Interchange Number: 9422

Bureau of Maintenance & Operations  
Asset Management Division



Interchange Name: US 22 JUGHANDLE ONE & TWO

Intersecting SR's: US 22 Willam Penn Hw

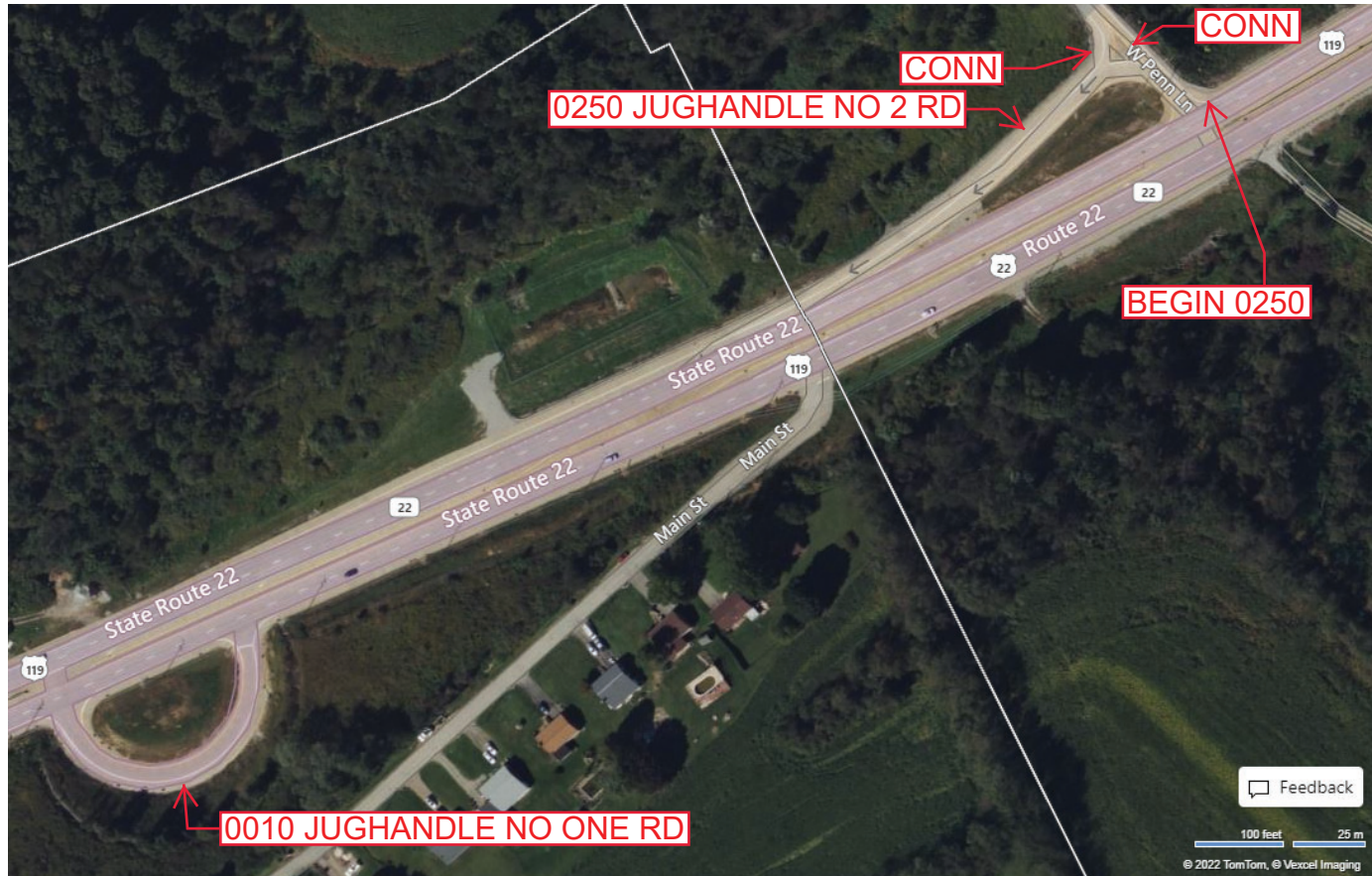
Ramp Segment Number and Ramp Segment Length Information:

Segment	Length	Segment	Length	Segment	Length	Segment	Length
0010	0380						
0250	0425						

Primary Route  
Interchange Exit  
Number

Secondary Route  
Interchange Exit  
Number

PennDOT Type 10 Map View:



Feedback

100 feet 25 m  
© 2022 TomTom, © Vexcel Imaging

© 2022 Microsoft

Last Date Modified:

Oct 6, 2022

County: 64

# RMS Interchange Information

Print Form

Bureau of Maintenance & Operations  
Asset Management Division



Interchange Number: 9424

Interchange Name: US 22 JUGHANDLE THREE & FOUR RD

Intersecting SR's: US 22 & SR 1035 Rushwood Rd & Stone Jug Rd

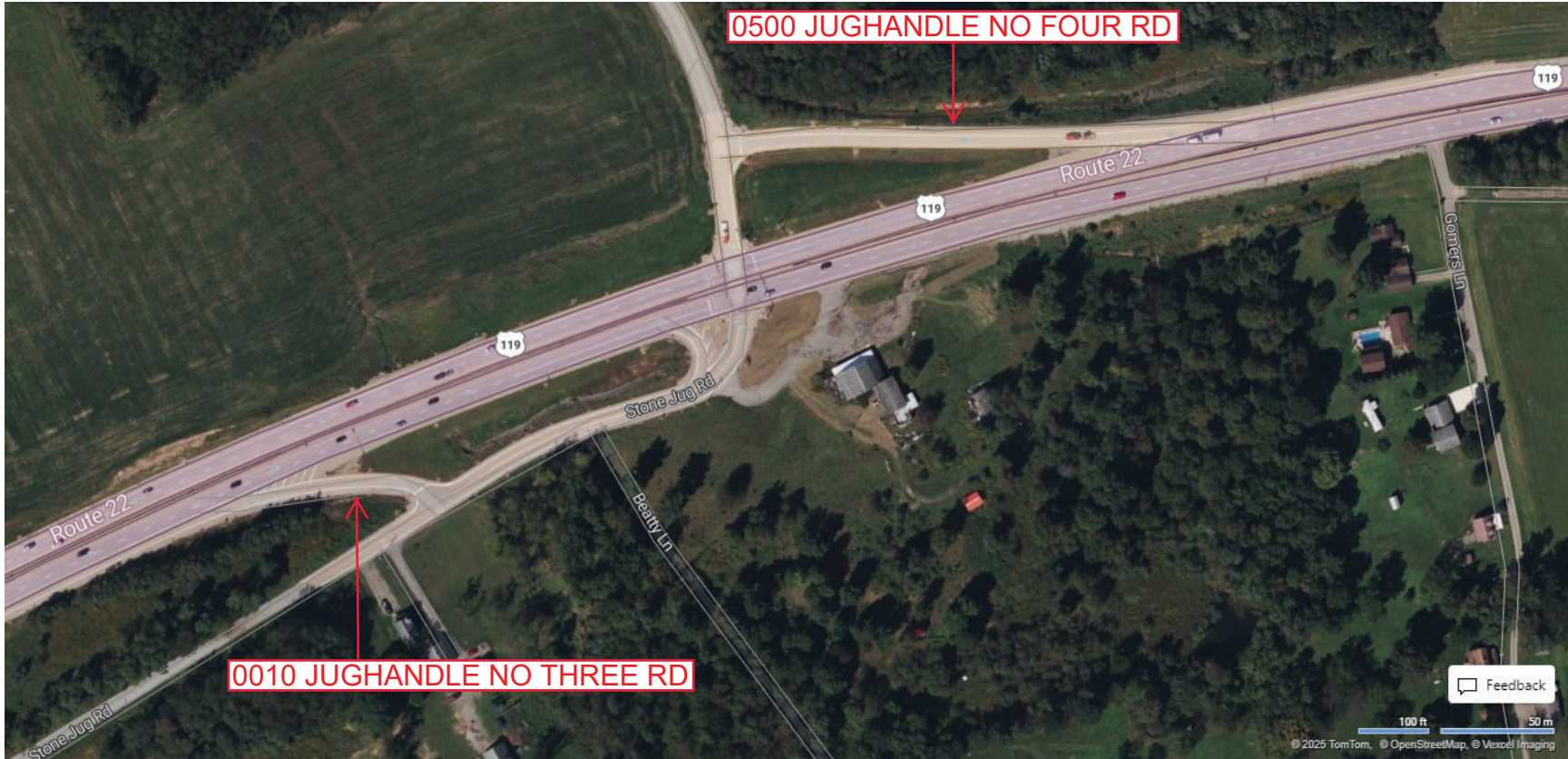
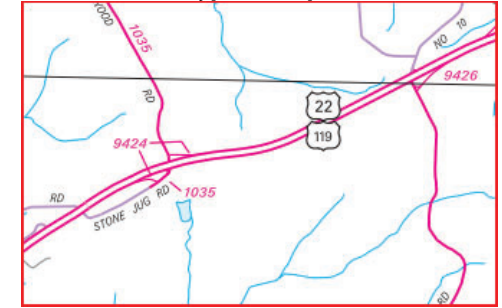
Ramp Segment Number and Ramp Segment Length Information:

Segment	Length	Segment	Length	Segment	Length	Segment	Length
0010	0165						
0500	0520						

Primary Route Interchange Exit Number

Secondary Route Interchange Exit Number

PennDOT Type 10 Map View:



Last Date Modified:

Feb 19, 2025

County: **64**

# RMS Interchange Information

Bureau of Maintenance & Operations  
Asset Management Division

Print Form



Interchange Number: **9426**

Interchange Name: **US 22 JUGHANDLE FIVE & SIX**

Intersecting SR's: **US 22 & SR 1033 State Park Rd & Boones Rd**

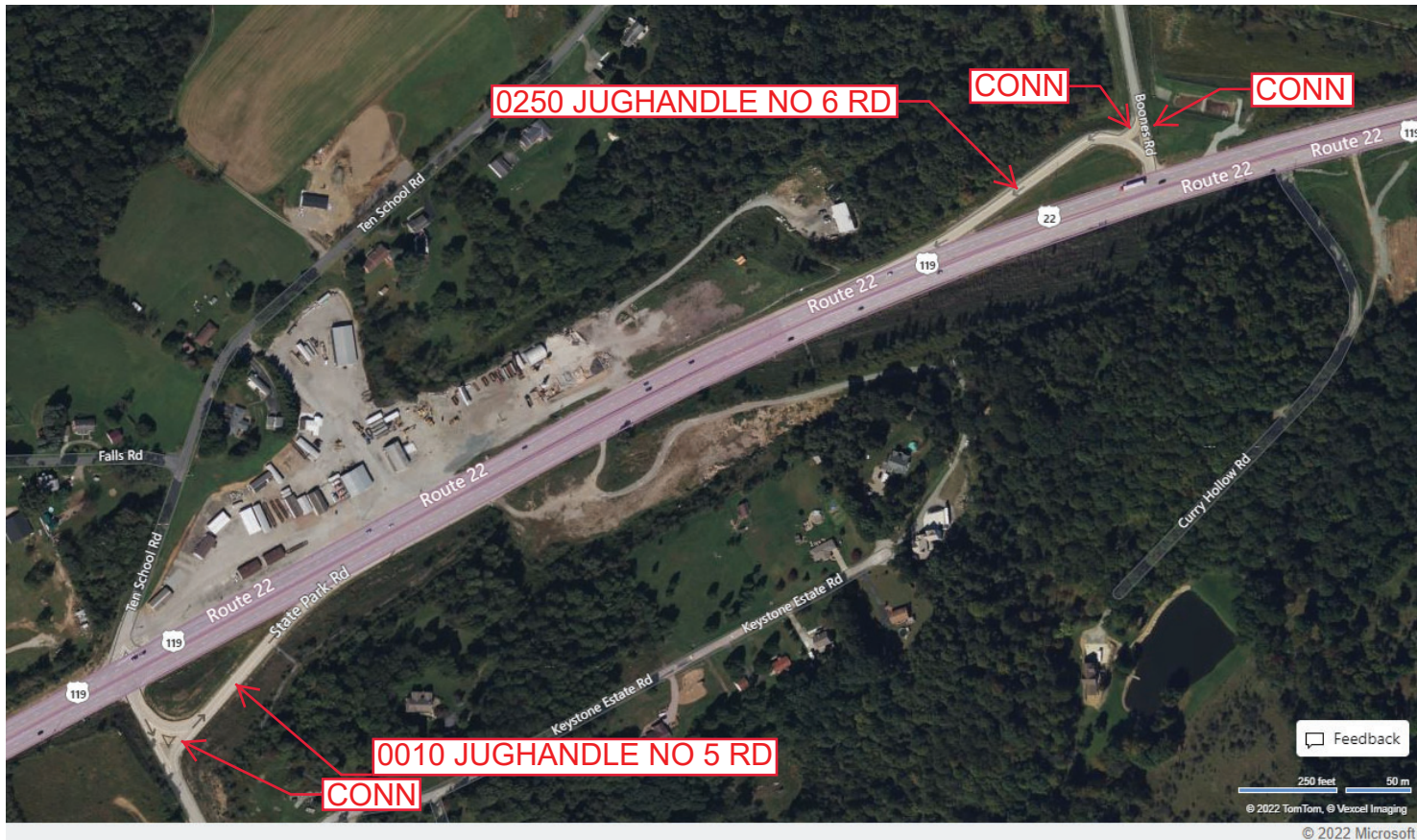
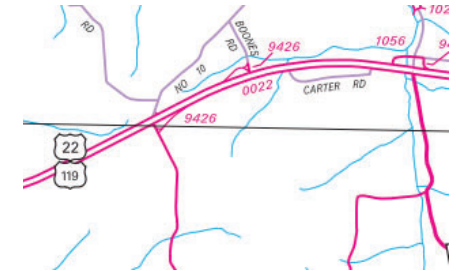
Ramp Segment Number and Ramp Segment Length Information:

Segment	Length	Segment	Length	Segment	Length	Segment	Length
<b>0010</b>	<b>0505</b>						
<b>0250</b>	<b>0680</b>						

Primary Route  
Interchange Exit  
Number

Secondary Route  
Interchange Exit  
Number

PennDOT Type 10 Map View:



Feedback

250 feet 50 m

© 2022 TomTom, © Vexcel Imaging  
© 2022 Microsoft

Last Date Modified:

Oct 6, 2022

County: **64**

# RMS Interchange Information

Print Form

Interchange Number: **9428**

Bureau of Maintenance & Operations  
Asset Management Division



Interchange Name: **US 22 JUGHANDLE B**

Intersecting SR's: **US 22 William Penn Hw & SR 1056 Truman Rd**

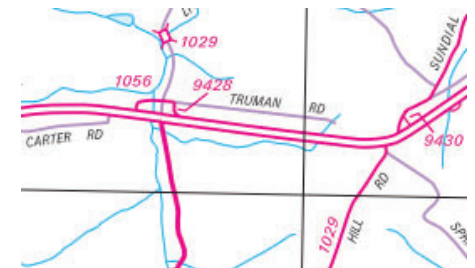
Ramp Segment Number and Ramp Segment Length Information:

Segment	Length	Segment	Length	Segment	Length	Segment	Length
<b>0500</b>	<b>0290</b>						

Primary Route Interchange Exit Number

Secondary Route Interchange Exit Number

PennDOT Type 10 Map View:



Last Date Modified:

Oct 6, 2022

County: **64**

# RMS Interchange Information

Print Form

Interchange Number: **9430**

Bureau of Maintenance & Operations  
Asset Management Division



Interchange Name: **US 22 CONNECTOR RD**

Intersecting SR's: **US 22 William Penn Hw & SR 1029 Westinghouse Rd**

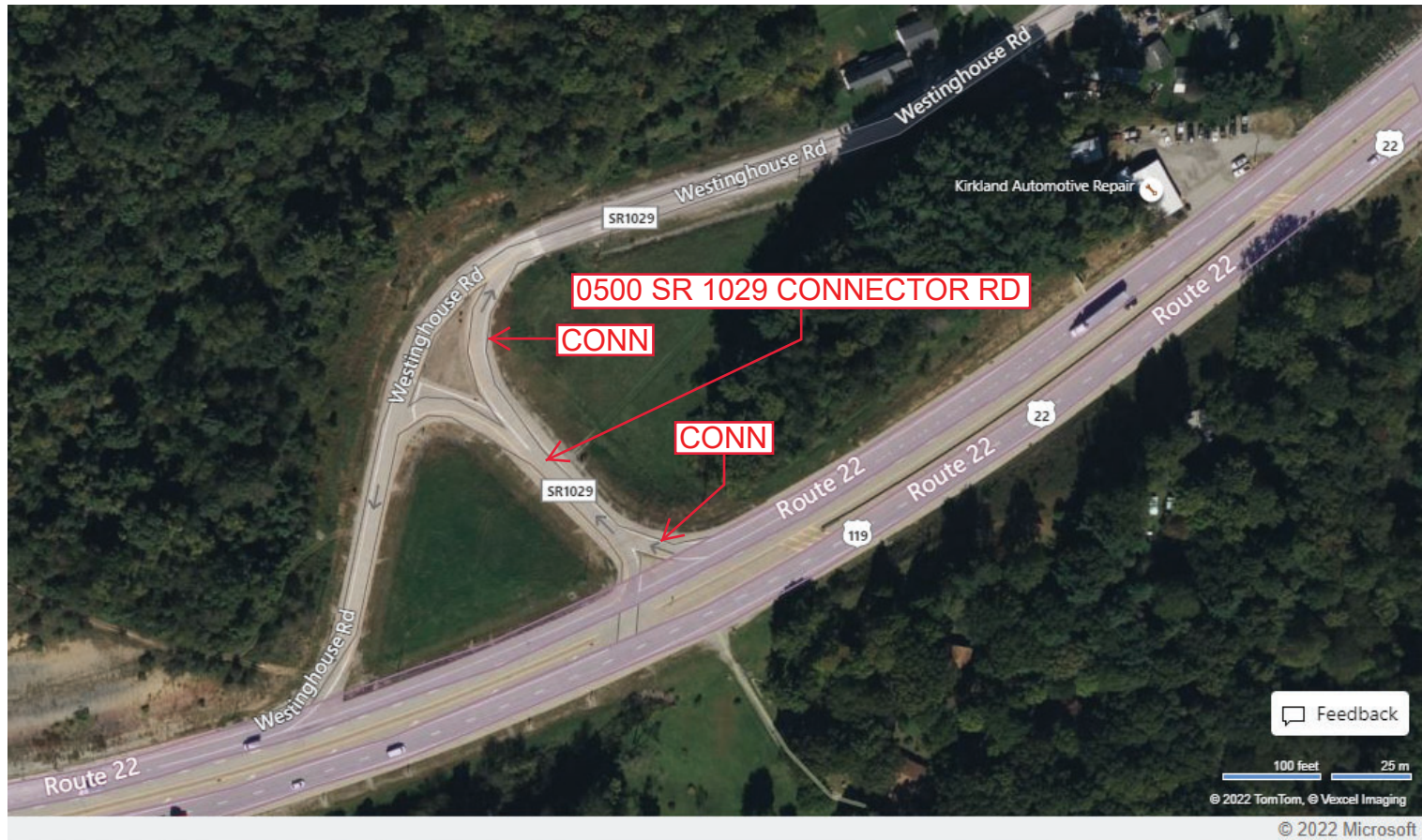
Ramp Segment Number and Ramp Segment Length Information:

Segment	Length	Segment	Length	Segment	Length	Segment	Length
<b>0500</b>	<b>0330</b>						

Primary Route  
Interchange Exit  
Number

Secondary Route  
Interchange Exit  
Number

PennDOT Type 10 Map View:



Last Date Modified:

Oct 7, 2022

County: 64

# RMS Interchange Information

Print Form

Interchange Number: 9432

Bureau of Maintenance & Operations  
Asset Management Division



Interchange Name: US 22 JUGHANDLE C

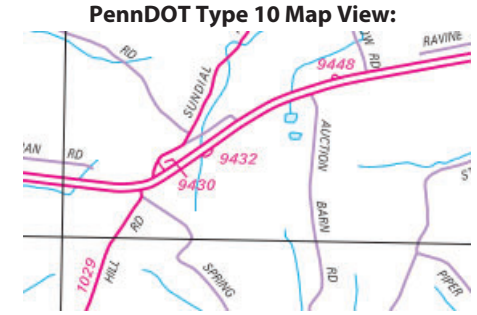
Intersecting SR's: US 22 William Penn Hwy

Ramp Segment Number and Ramp Segment Length Information:

Segment	Length	Segment	Length	Segment	Length	Segment	Length
0010	0440						

Primary Route Interchange Exit Number

Secondary Route Interchange Exit Number



Last Date Modified: Oct 11, 2022

County: 64

# RMS Interchange Information

Bureau of Maintenance & Operations  
Asset Management Division

Print Form



Interchange Number: 9434

Interchange Name: JUGHANDLES TO US 22 EAST & WEST

Intersecting SR's: US 22, SR 1016 Bairdstown Rd & SR 1077 Jonnet Rd

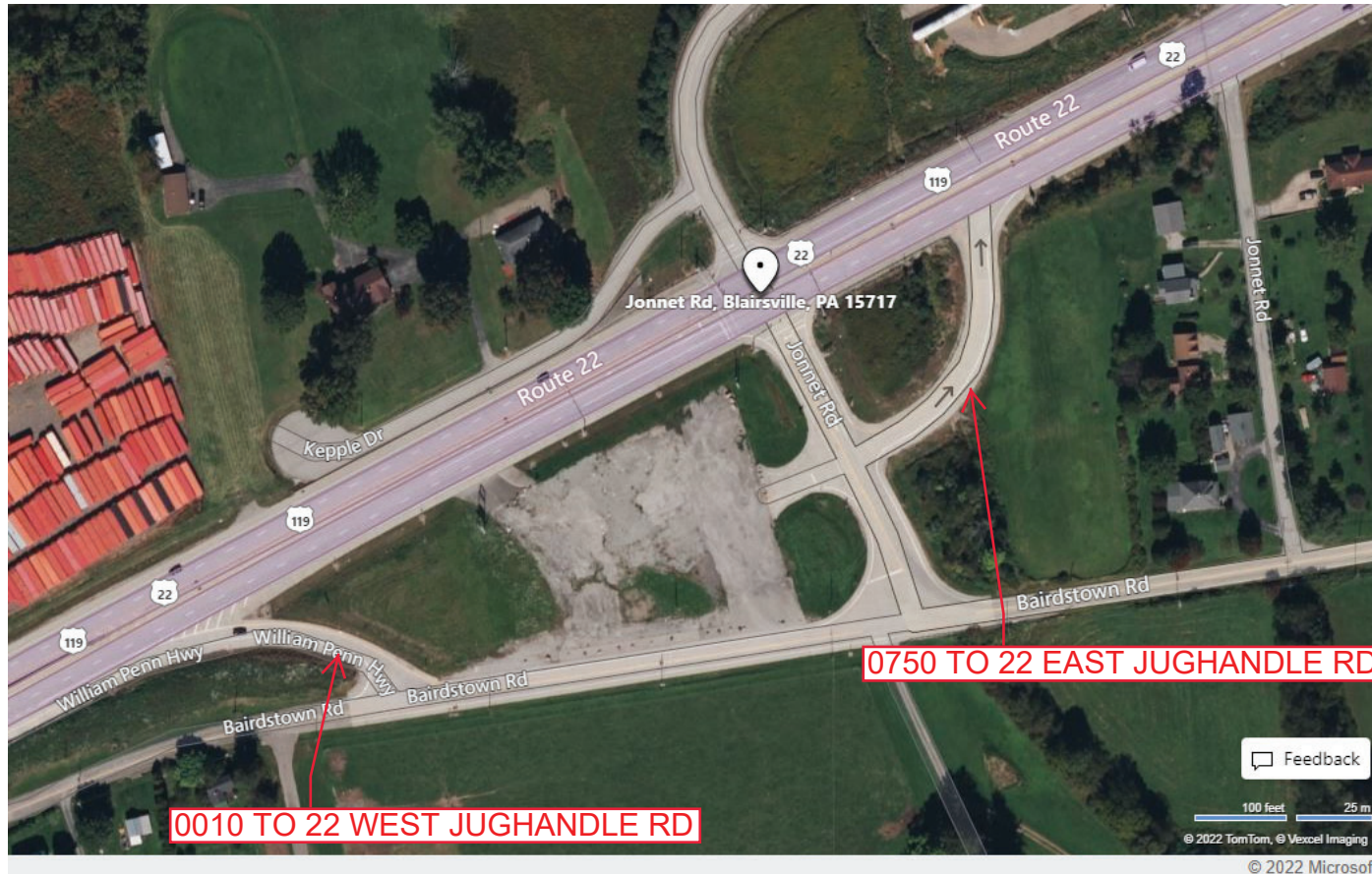
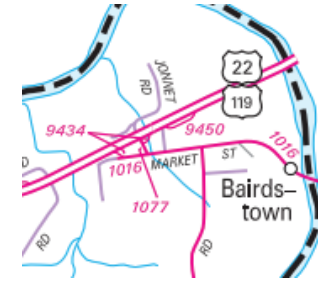
Ramp Segment Number and Ramp Segment Length Information:

Segment	Length	Segment	Length	Segment	Length	Segment	Length
0010	0205						
0750	0340						

Primary Route Interchange Exit Number

Secondary Route Interchange Exit Number

PennDOT Type 10 Map View:



Feedback

100 feet 25 m

© 2022 TomTom, © Vexcel Imaging

© 2022 Microsoft

Last Date Modified:

Oct 14, 2022

County: 64

# RMS Interchange Information

Print Form

Interchange Number: 9436

Bureau of Maintenance & Operations  
Asset Management Division



Interchange Name: TRIANGLE LN JUGHANDLES

Intersecting SR's: US 22 William Penn Hw & Triangle Ln

Ramp Segment Number and Ramp Segment Length Information:

Segment	Length	Segment	Length	Segment	Length	Segment	Length
0500	0345						

Primary Route  
Interchange Exit  
Number

Secondary Route  
Interchange Exit  
Number

PennDOT Type 10 Map View:



Feedback

50 feet 20 m

© 2022 TomTom, © Vexcel Imaging

© 2022 Microsoft

Last Date Modified:

Oct 14, 2022



County: 64

# RMS Interchange Information

Print Form

Interchange Number: 9438

Bureau of Maintenance & Operations  
Asset Management Division



Interchange Name: JUGHANDLES RAMP RD

Intersecting SR's: US 22, Harrison City Rd & Berlin Farm Rd

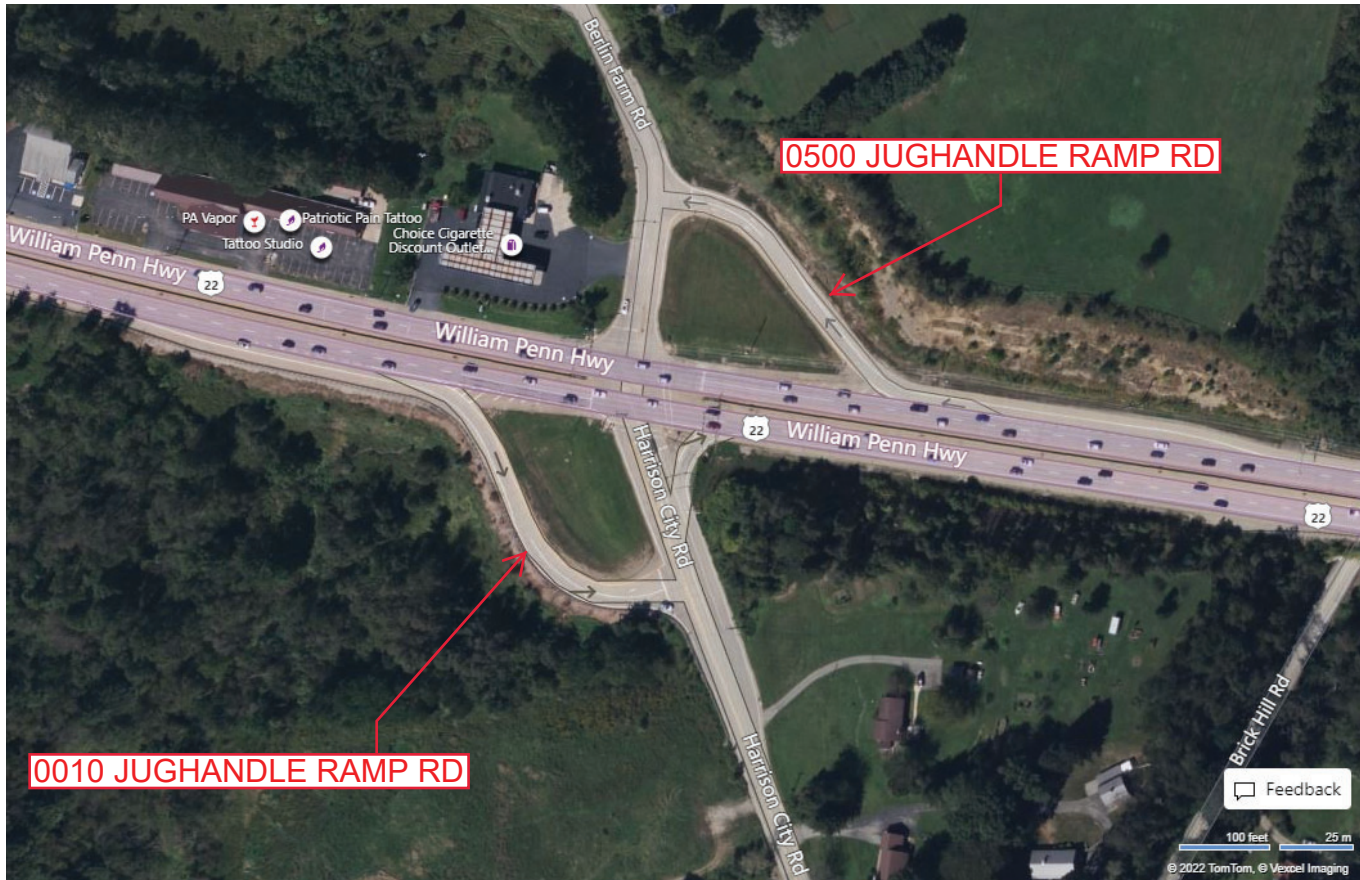
Ramp Segment Number and Ramp Segment Length Information:

Segment	Length	Segment	Length	Segment	Length	Segment	Length
0010	0360						
0500	0320						

Primary Route Interchange Exit Number

Secondary Route Interchange Exit Number

PennDOT Type 10 Map View:



Feedback

100 feet 25 m

© 2022 TomTom, © Voxel Imaging

© 2022 Microsoft

Last Date Modified:

Oct 14, 2022

County: **64**

# RMS Interchange Information

Print Form

Interchange Number: **9440**

Bureau of Maintenance & Operations  
Asset Management Division



Interchange Name: **JUGHANDLES RAMP RD**

Intersecting SR's: **US 22 William Penn Hw**

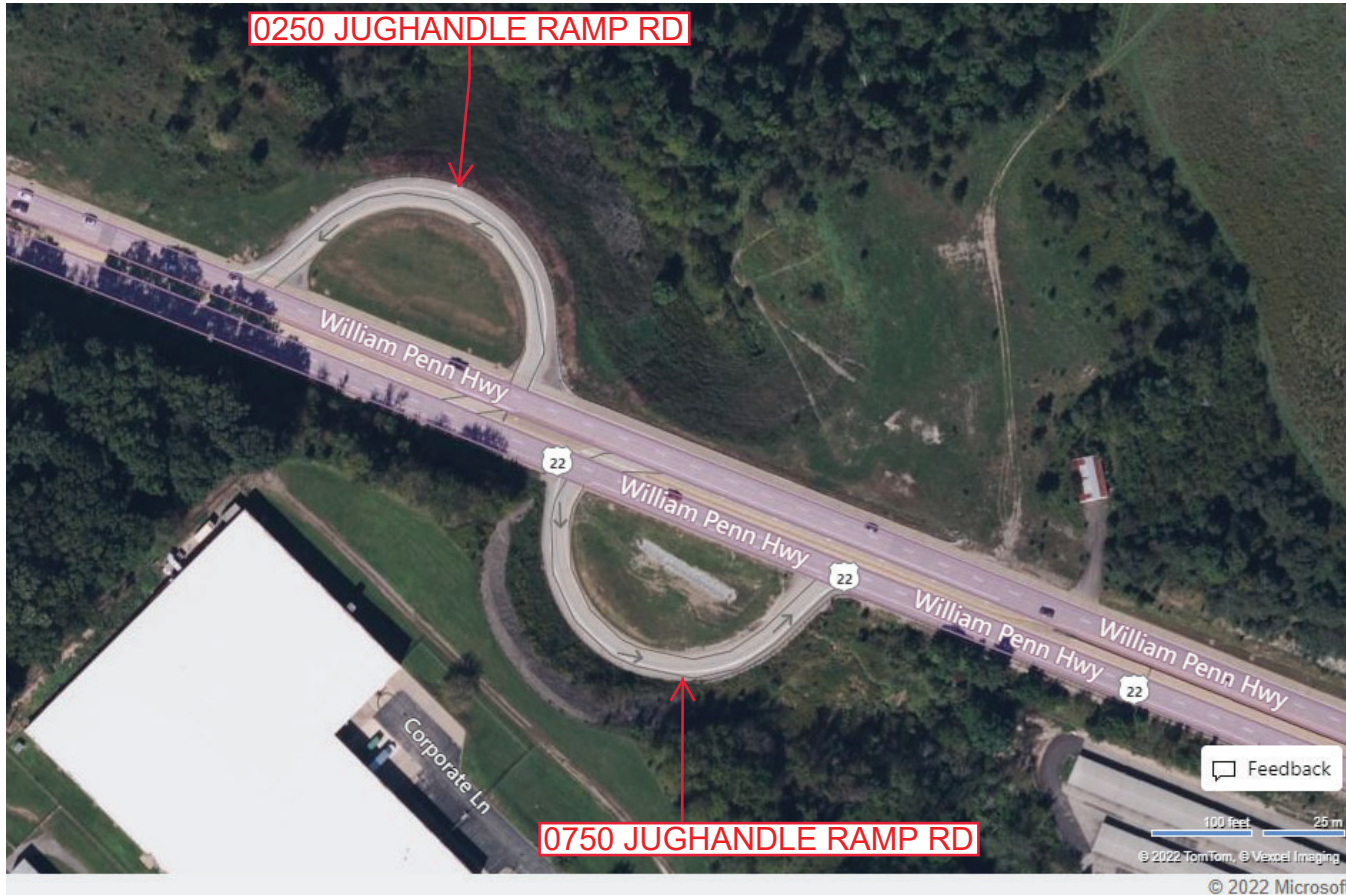
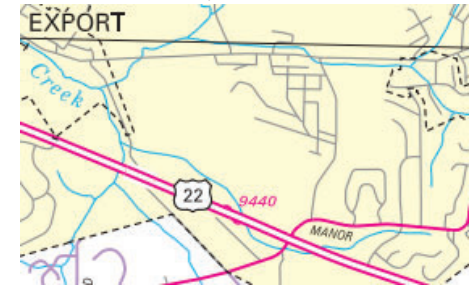
Ramp Segment Number and Ramp Segment Length Information:

Segment	Length	Segment	Length	Segment	Length	Segment	Length
<b>0250</b>	<b>0435</b>						
<b>0750</b>	<b>0435</b>						

Primary Route Interchange Exit Number

Secondary Route Interchange Exit Number

PennDOT Type 10 Map View:



Feedback

100 feet 25 m

© 2022 TomTom, © Vexcel Imaging  
© 2022 Microsoft

Last Date Modified: **Oct 14, 2022**

County: 64

# RMS Interchange Information

Print Form

Interchange Number: 9442

Bureau of Maintenance & Operations  
Asset Management Division



Interchange Name: BRANTHOOVER CUTOFF RD JUGHANDLE

Intersecting SR's: US 22 Willam Penn Hw & Branthoover Cutoff Rd

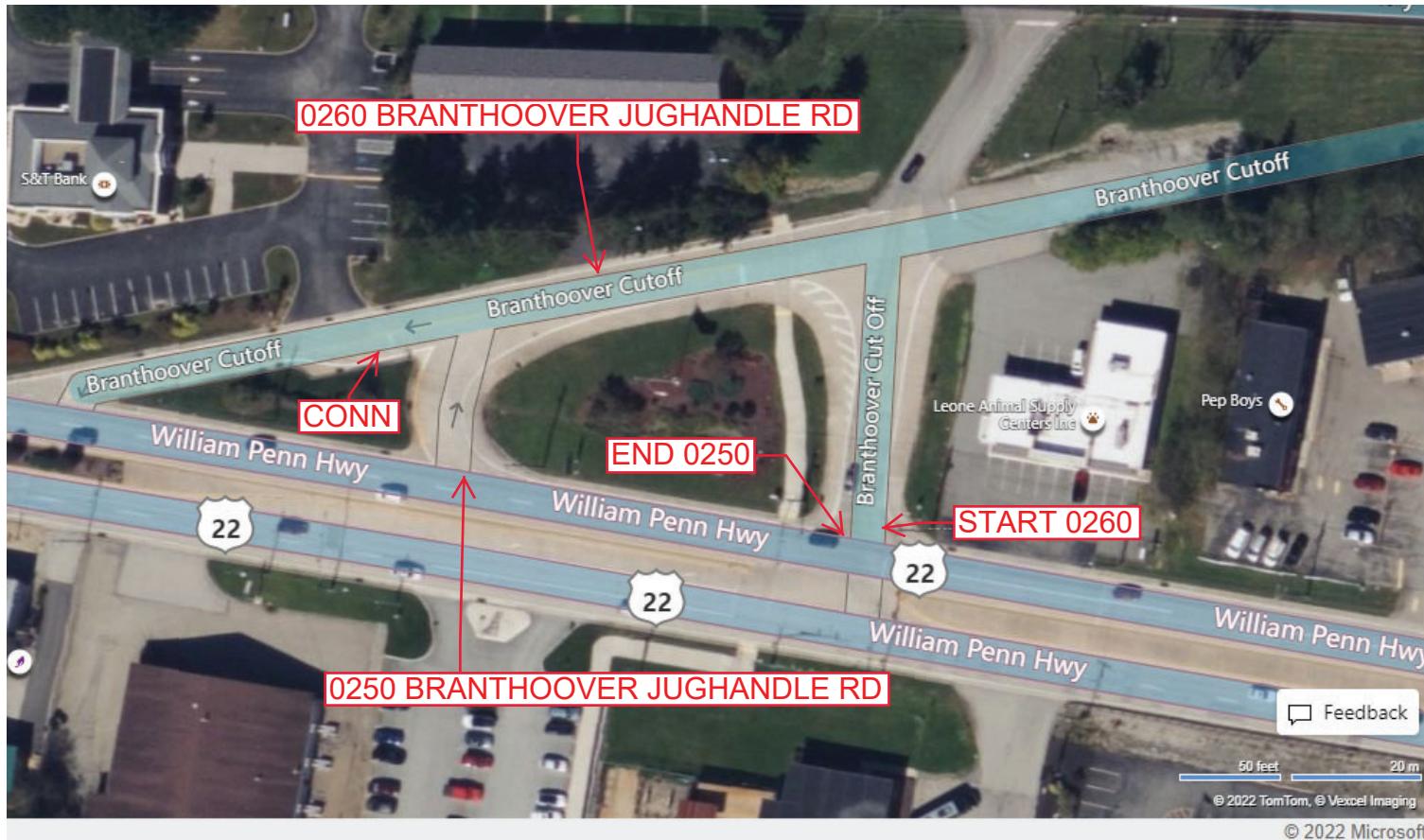
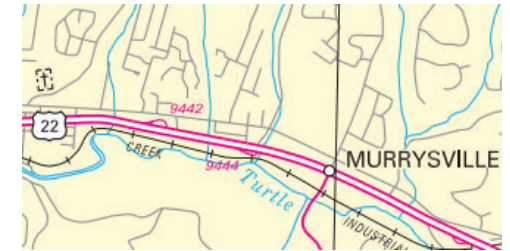
Ramp Segment Number and Ramp Segment Length Information:

Segment	Length	Segment	Length	Segment	Length	Segment	Length
0250	0400						
0260	0575						

Primary Route  
Interchange Exit  
Number

Secondary Route  
Interchange Exit  
Number

PennDOT Type 10 Map View:



Last Date Modified:

Oct 17, 2022

County: 64

# RMS Interchange Information

Print Form

Interchange Number: 9444

Bureau of Maintenance & Operations  
Asset Management Division



Interchange Name: TARR HOLLOW RD JUGHANDLE

Intersecting SR's: US 22 Willam Penn Hw & Tarr Hollow Rd

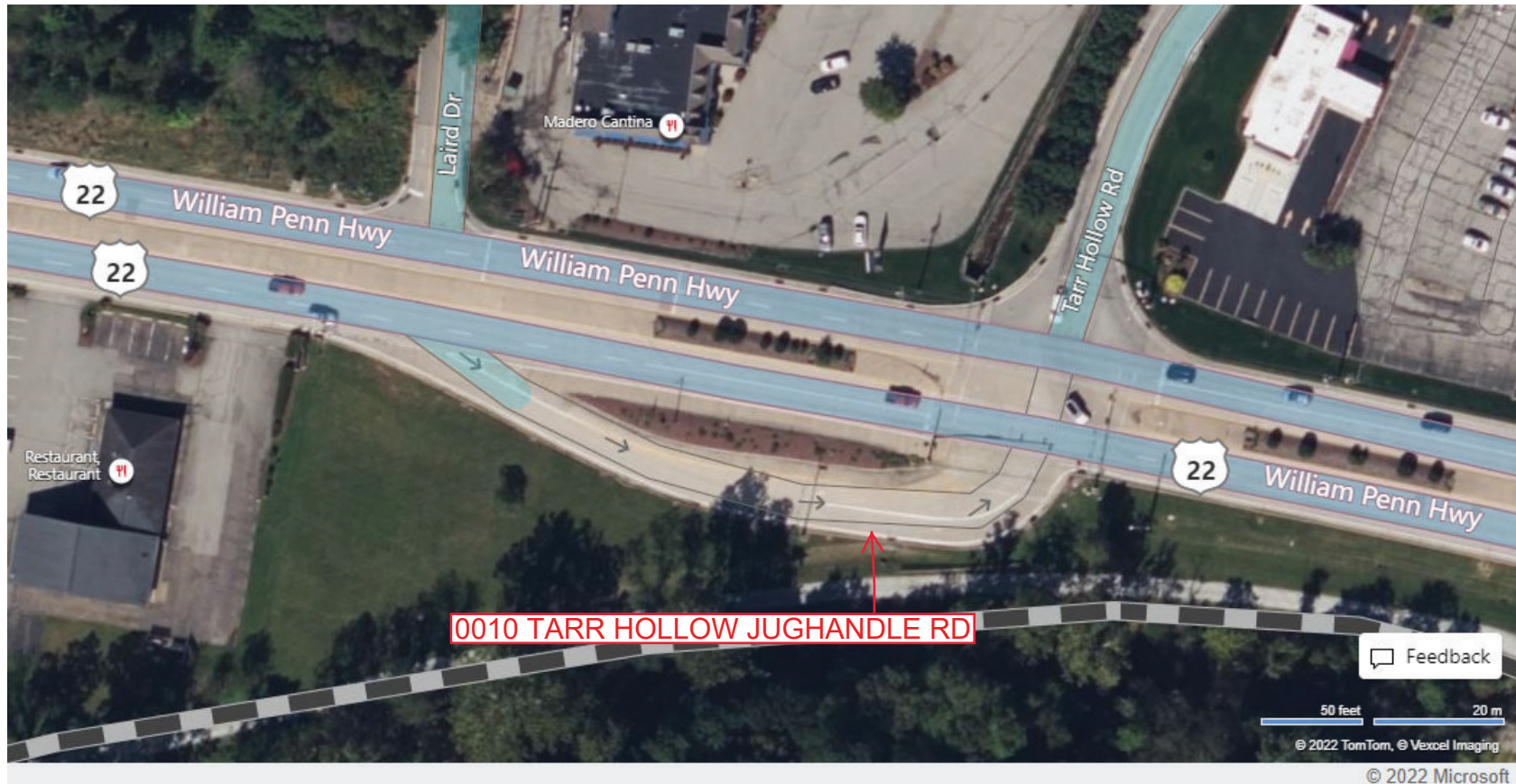
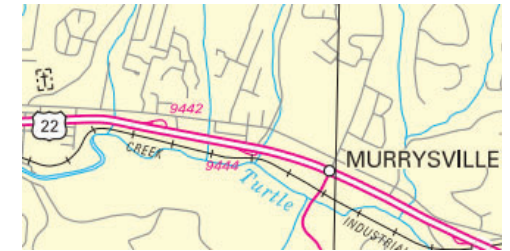
Ramp Segment Number and Ramp Segment Length Information:

Segment	Length	Segment	Length	Segment	Length	Segment	Length
0010	0285						

Primary Route Interchange Exit Number

Secondary Route Interchange Exit Number

PennDOT Type 10 Map View:



Feedback

50 feet 20 m

© 2022 TomTom, © Vexcel Imaging

© 2022 Microsoft

Last Date Modified:

Oct 17, 2022

County: 64

# RMS Interchange Information

Bureau of Maintenance & Operations  
Asset Management Division

Print Form



Interchange Number: 9446

Interchange Name: COZY INN CUTOFF RD JUGHANDLE

Intersecting SR's: US 22 Willam Penn Hw & T398 Cozy Inn Cutoff Rd

Ramp Segment Number and Ramp Segment Length Information:

Segment	Length	Segment	Length	Segment	Length	Segment	Length
0010	0400						

Primary Route Interchange Exit Number

Secondary Route Interchange Exit Number

PennDOT Type 10 Map View:



Feedback

50 feet 20 m

© 2022 TomTom, © Vexcel Imaging

© 2022 Microsoft

Last Date Modified:

Oct 17, 2022

County: 64

# RMS Interchange Information

Print Form

Interchange Number: 9448

Bureau of Maintenance & Operations  
Asset Management Division



Interchange Name: TO 22 WEST JUGHANDLE

Intersecting SR's: US 22 Willam Penn Hw

Ramp Segment Number and Ramp Segment Length Information:

Segment	Length	Segment	Length	Segment	Length	Segment	Length
0250	0245						

Primary Route Interchange Exit Number

Secondary Route Interchange Exit Number

PennDOT Type 10 Map View:



Feedback

50 feet 20 m

© 2022 TomTom, © Vexcel Imaging

© 2022 Microsoft

Last Date Modified:

Oct 18, 2022

County: **64**

# RMS Interchange Information

Print Form

Interchange Number: **9450**

Bureau of Maintenance & Operations  
Asset Management Division



Interchange Name: **VEHICLE INSPECTION AREA**

Intersecting SR's: **US 22 Willam Penn Hw**

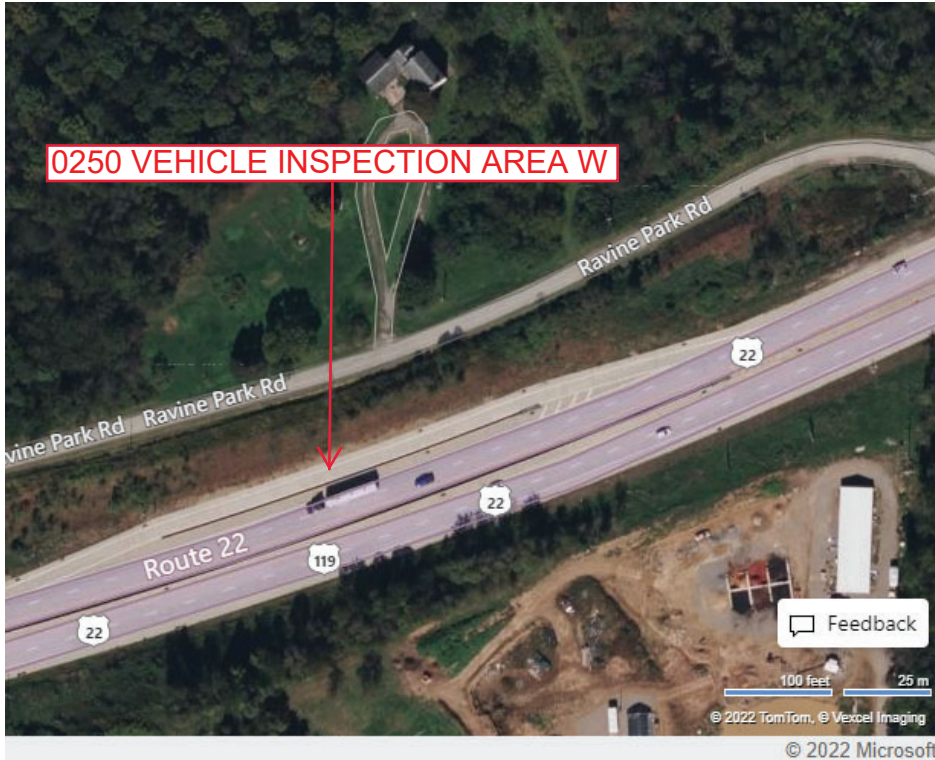
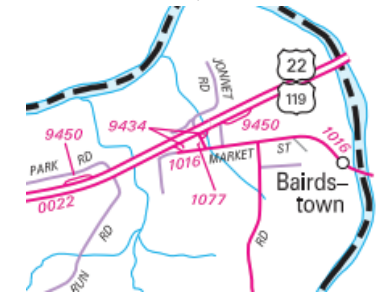
Ramp Segment Number and Ramp Segment Length Information:

Segment	Length	Segment	Length	Segment	Length	Segment	Length
<b>0250</b>	<b>0395</b>						
<b>0750</b>	<b>0370</b>						

Primary Route Interchange Exit Number

Secondary Route Interchange Exit Number

PennDOT Type 10 Map View:



Last Date Modified:

Oct 19, 2022

County: **64**

# RMS Interchange Information

Bureau of Maintenance & Operations  
Asset Management Division

Print Form



Interchange Number: **9501**

Interchange Name: **PRICEDALE RD PARK AND RIDE**

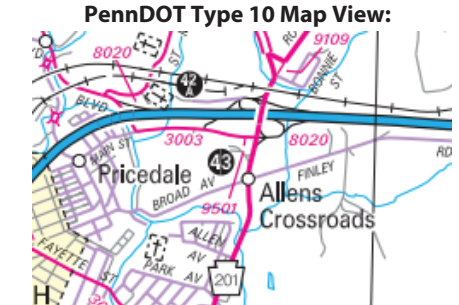
Intersecting SR's: **SR 3003 Pricedale Rd**

Ramp Segment Number and Ramp Segment Length Information:

Segment	Length	Segment	Length	Segment	Length	Segment	Length
<b>0010</b>	<b>0230</b>						

Primary Route  
Interchange Exit  
Number

Secondary Route  
Interchange Exit  
Number



Last Date Modified:

Oct 19, 2022



County: **64**

# RMS Interchange Information

Print Form

Interchange Number: **9503**

Bureau of Maintenance & Operations  
Asset Management Division



Interchange Name: **US 22 & PA 819 PARK AND RIDE**

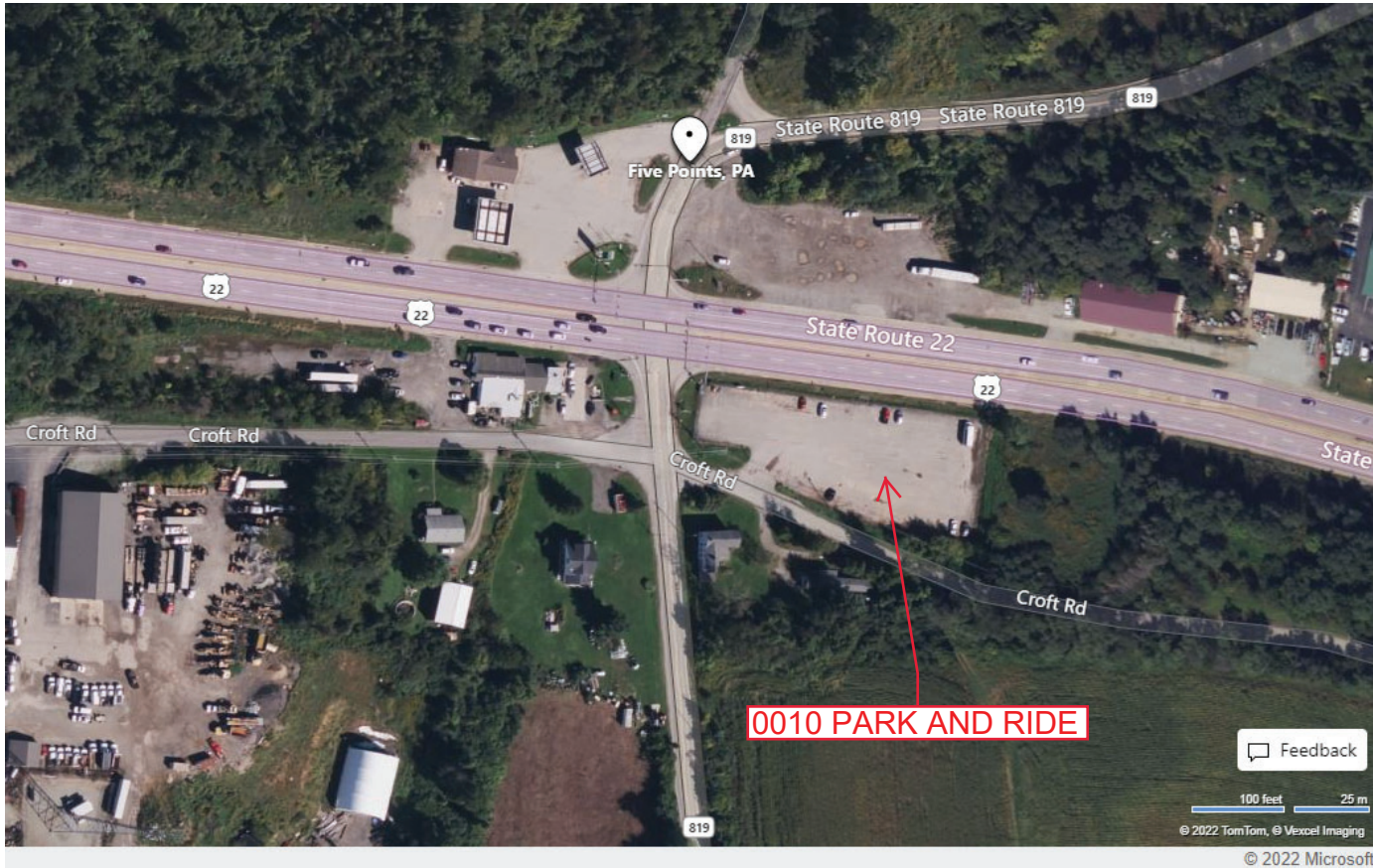
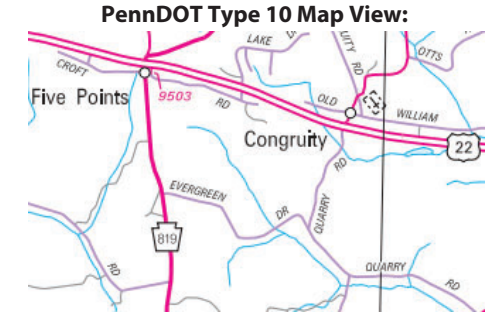
Intersecting SR's: **T628 Old William Penn Hw**

Ramp Segment Number and Ramp Segment Length Information:

Segment	Length	Segment	Length	Segment	Length	Segment	Length
<b>0010</b>	<b>0110</b>						

Primary Route Interchange Exit Number

Secondary Route Interchange Exit Number



Feedback

100 feet 25 m  
© 2022 TomTom, © Vexcel Imaging  
© 2022 Microsoft

Last Date Modified:

Nov 23, 2022