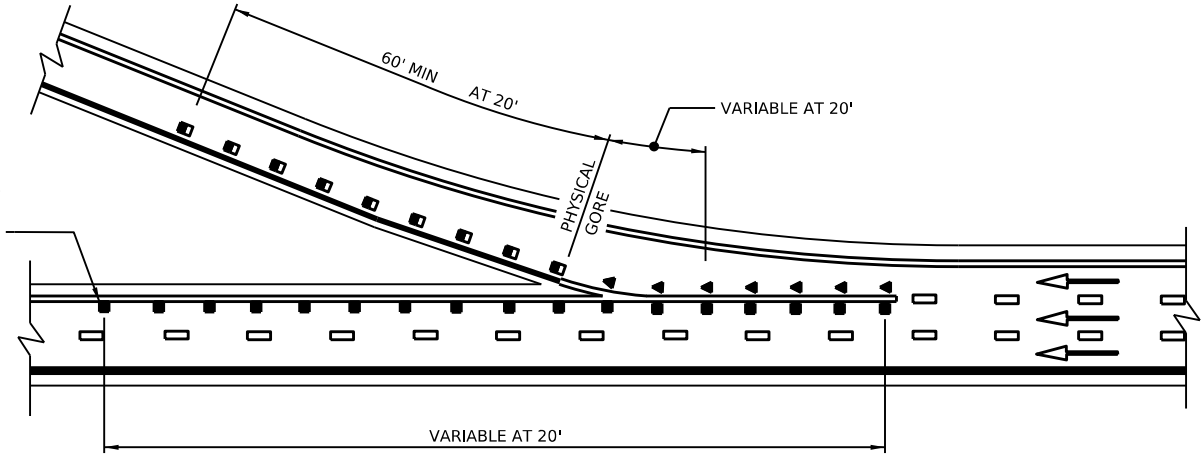
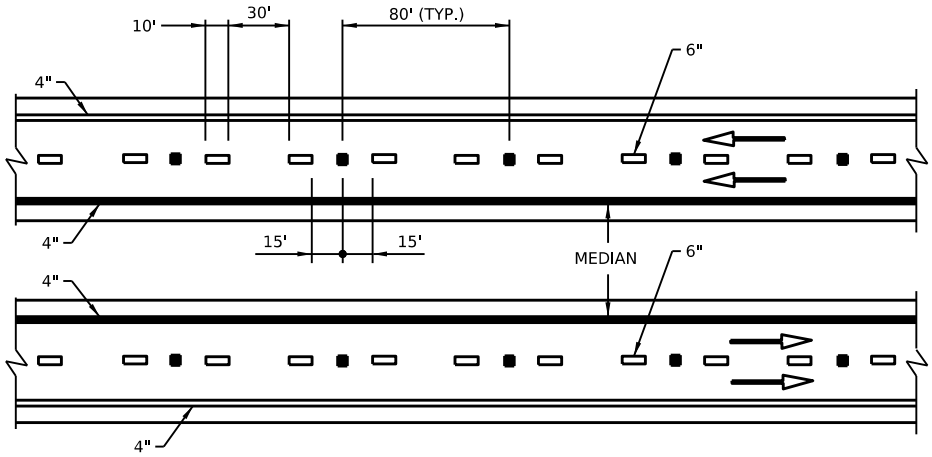


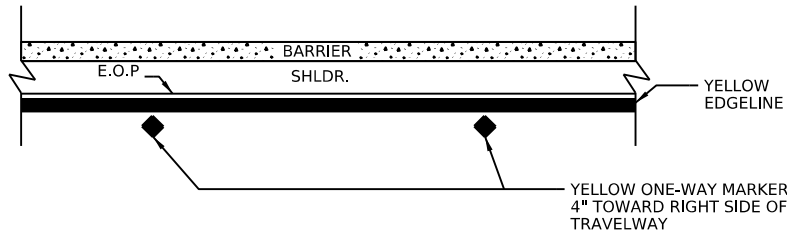
PLACE LAST MARKER  
AT END OF 8" WHITE  
EDGE LINE, (NORMALLY  
50' BEYOND THE  
PHYSICAL GORE)



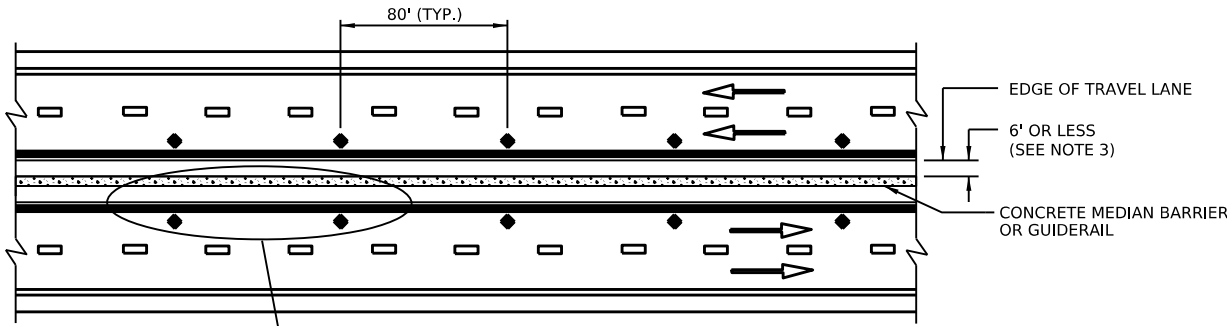
EXIT GORE AREA



NON-INTERSTATE MAIN LINE  
(SEE NOTE 7)



DETAIL "A"



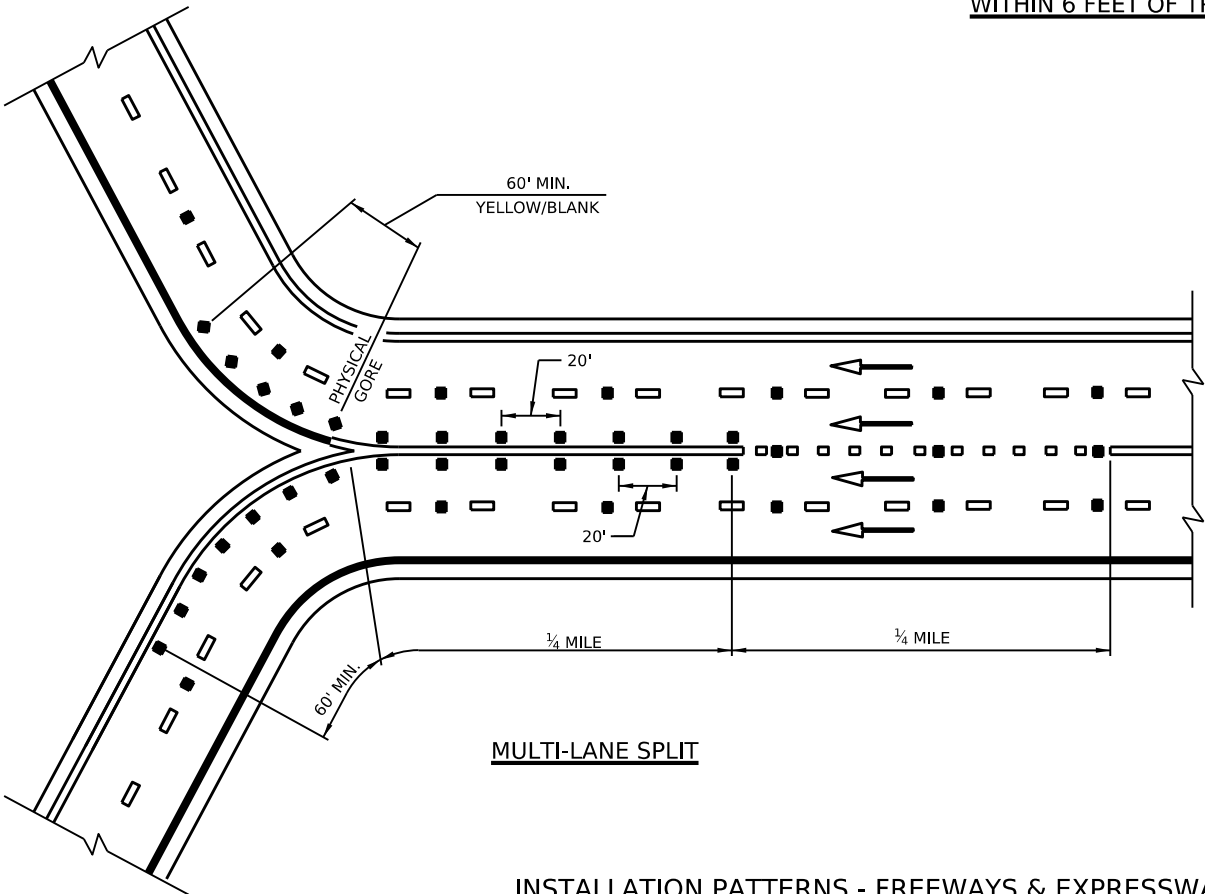
CONCRETE MEDIAN BARRIER OR GUIDERAIL  
WITHIN 6 FEET OF TRAVEL LANE

LEGEND

- TWO-WAY MARKER WITH WHITE/BLANK REFLECTOR
- TWO-WAY MARKER WITH YELLOW/BLANK REFLECTOR
- TWO-WAY MARKER WITH WHITE/RED REFLECTOR
- TWO-WAY MARKER WITH YELLOW/RED REFLECTOR
- WHITE
- YELLOW
- BROKEN WHITE
- DIRECTION OF TRAVEL

NOTES:

- PROVIDE MATERIALS AND CONSTRUCT AS SPECIFIED IN PUBLICATION 408, UNLESS NOTED OTHERWISE.
- PLACE MARKERS ALONG A LANE LINE (BROKEN LINE) MIDWAY BETWEEN THE PAINTED PORTIONS.
- PLACE MARKERS ALONG AN EDGE OR CHANNELIZING LINE WITH NEAR EDGE OF MARKER CASTING 4" FROM NEAR EDGE OF PAINTED LINE, WHEN CONCRETE MEDIAN BARRIER OR GUIDERAIL IS WITHIN 6' OF TRAVEL LANE.
- INSTALL MARKERS 4" MIN. FROM ANY PAVEMENT SEAM, JOINT OR EDGE.
- SEE SHEET 4 FOR MARKER DETAILS.
- FOR MARKER SPACING ON CURVES SEE SHEET 3.
- MARKERS MUST NOT BE INSTALLED IN CONJUNCTION WITH RECESSED PAVEMENT MARKINGS FOR BROKEN LANE LINE APPLICATIONS ON INTERSTATE ROADWAYS.



MULTI-LANE SPLIT

INSTALLATION PATTERNS - FREEWAYS & EXPRESSWAYS

COMMONWEALTH OF PENNSYLVANIA  
DEPARTMENT OF TRANSPORTATION  
BUREAU OF OPERATIONS

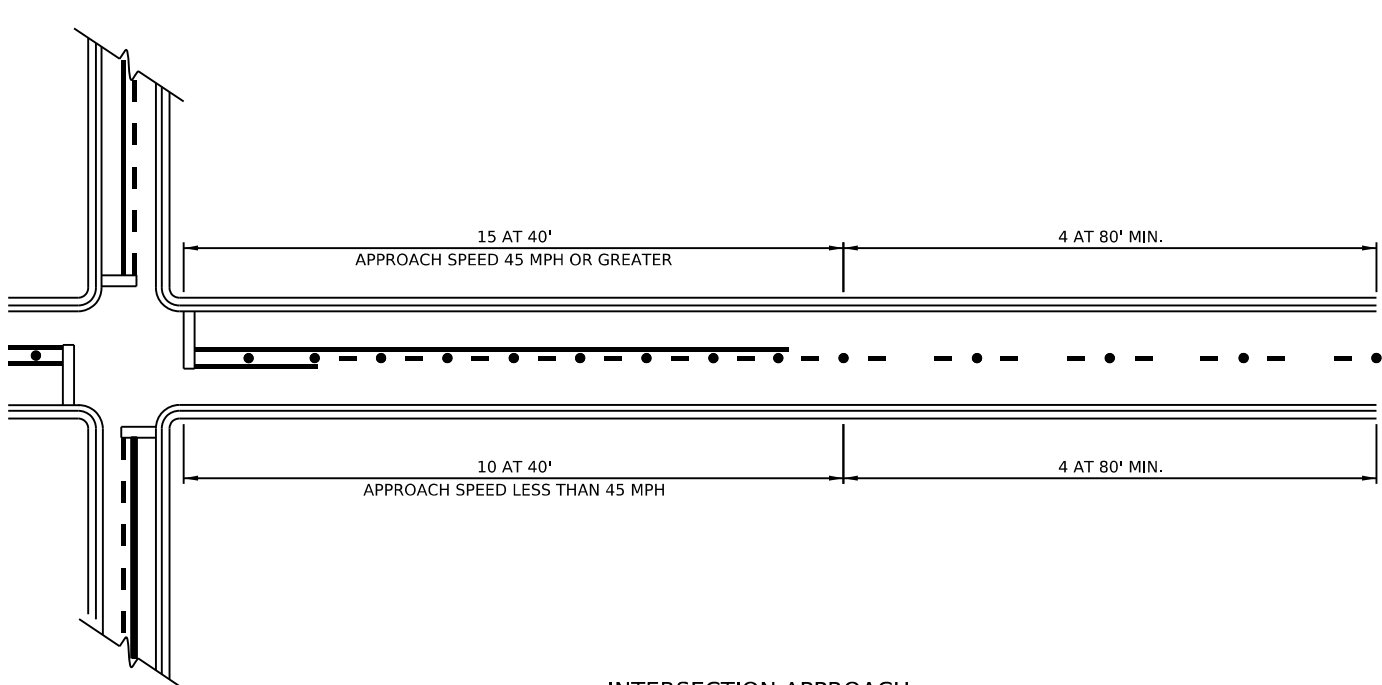
SNOWPLOWABLE RAISED  
PAVEMENT MARKERS

RECOMMENDED  
MANAGER, TRAFFIC ENGINEERING AND  
PERMITS SECTION

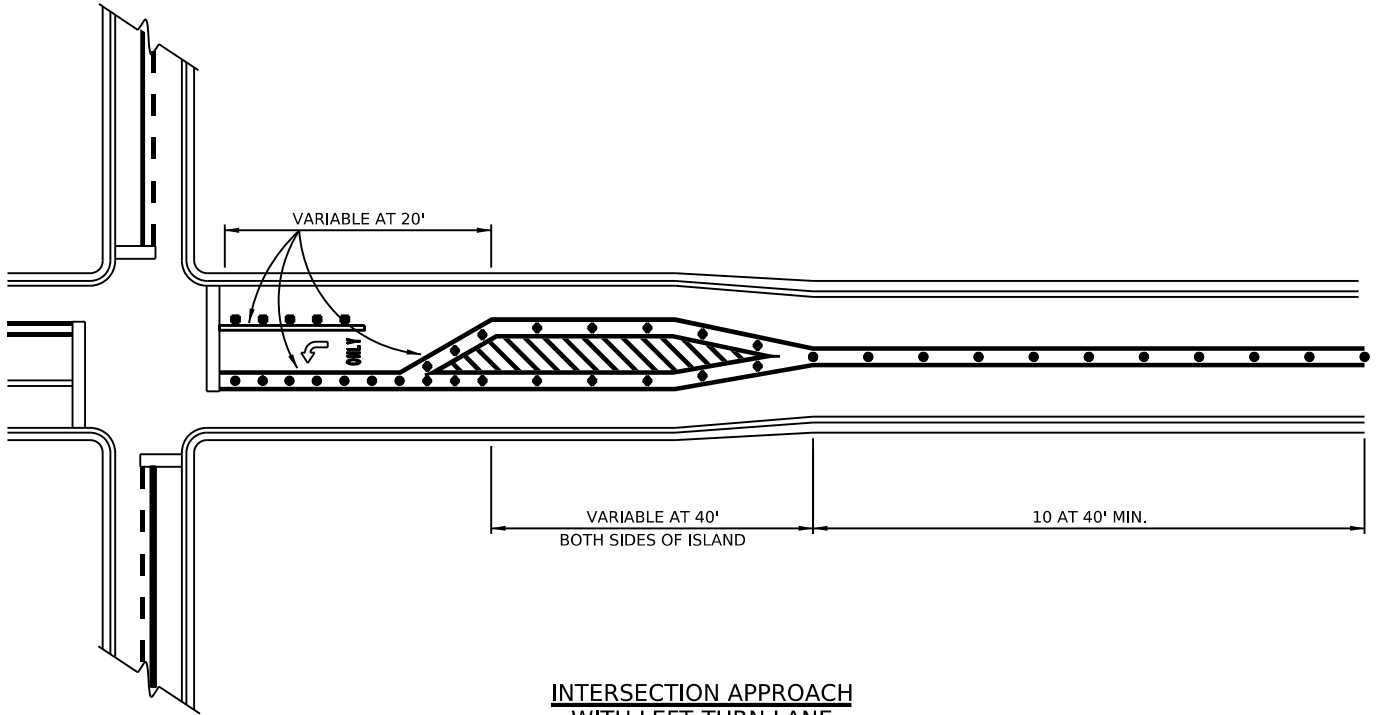
RECOMMENDED  
CHIEF, HIGHWAY SAFETY AND TRAFFIC  
OPERATIONS DIVISION

SHEET 1 OF 4

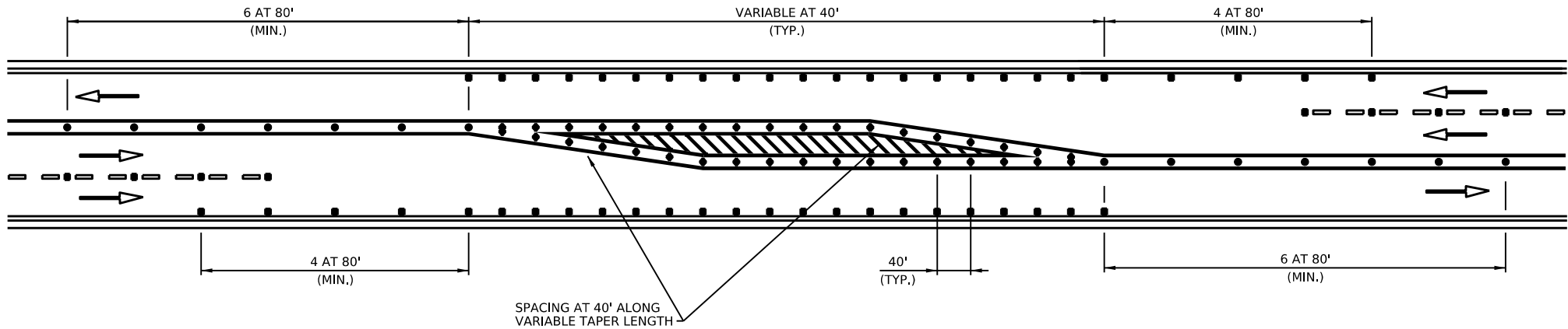
TC-8602



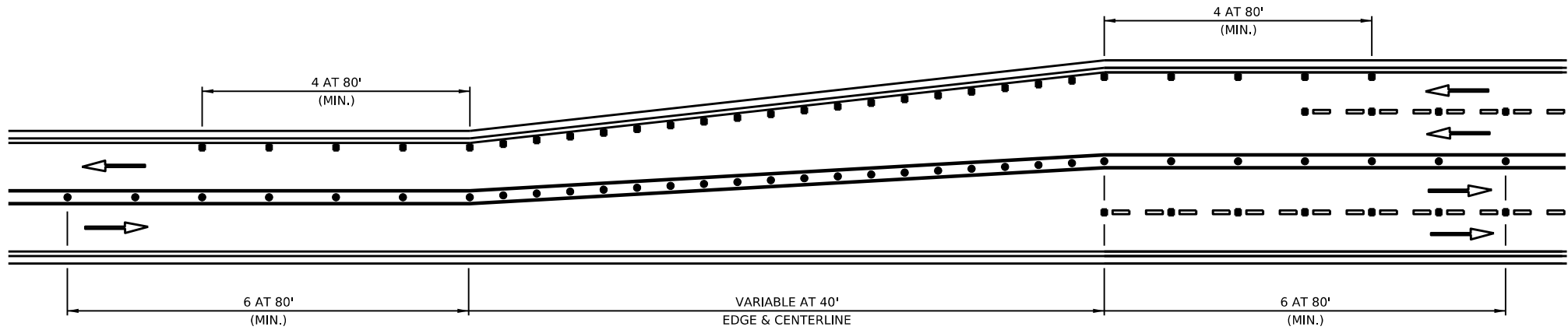
INTERSECTION APPROACH



INTERSECTION APPROACH  
WITH LEFT-TURN LANE



TWO LANES TO ONE LANE



FOUR LANES TO TWO LANES

TRANSITION

LEGEND

- TWO-WAY MARKER WITH WHITE/BLANK REFLECTOR
- TWO-WAY MARKER WITH YELLOW/BLANK REFLECTOR
- TWO-WAY MARKER WITH YELLOW/YELLOW REFLECTOR
- WHITE
- YELLOW
- BROKEN WHITE
- BROKEN YELLOW
- DIRECTION OF TRAVEL

NOTES:

- SEE SHEET 3 FOR ADDITIONAL NOTES.
- FOR MARKER SPACING ON CURVES SEE SHEET 3.

COMMONWEALTH OF PENNSYLVANIA  
DEPARTMENT OF TRANSPORTATION  
BUREAU OF OPERATIONS

SNOWPLOWABLE RAISED  
PAVEMENT MARKERS

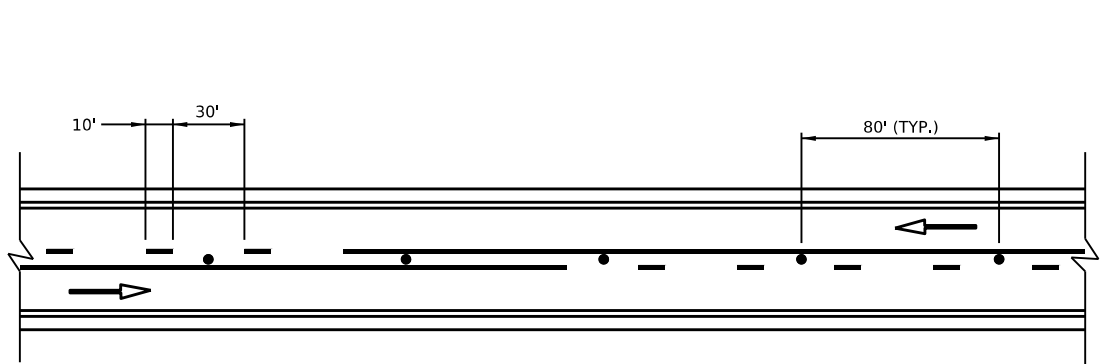
RECOMMENDED  
MANAGER, TRAFFIC ENGINEERING AND  
PERMITS SECTION

RECOMMENDED  
CHIEF, HIGHWAY SAFETY AND TRAFFIC  
OPERATIONS DIVISION

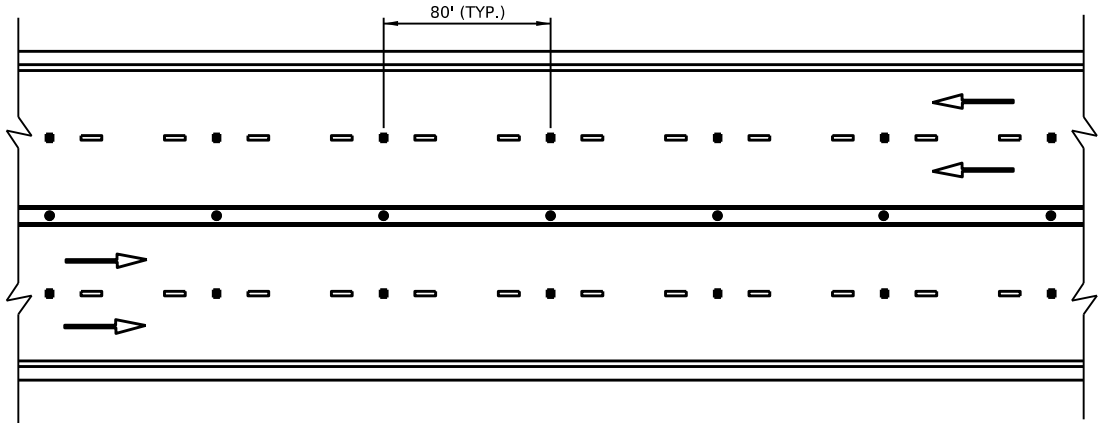
SHEET 2 OF 4

TC-8602

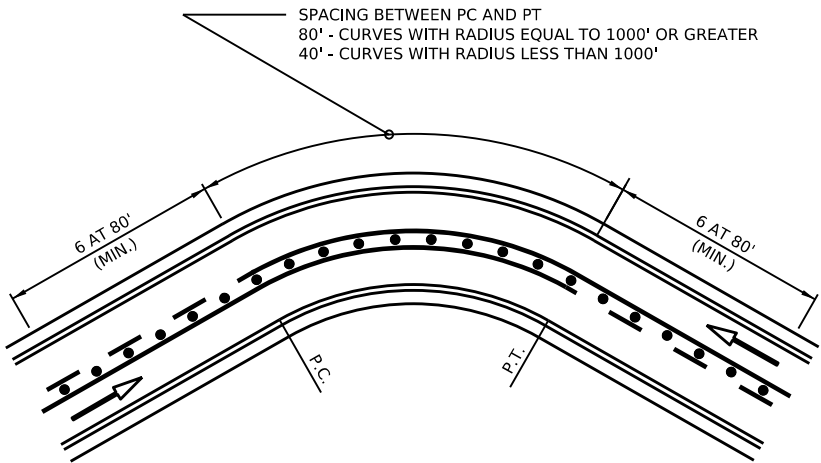
PLOTTED: \$\$\$\$DATE\$\$\$\$



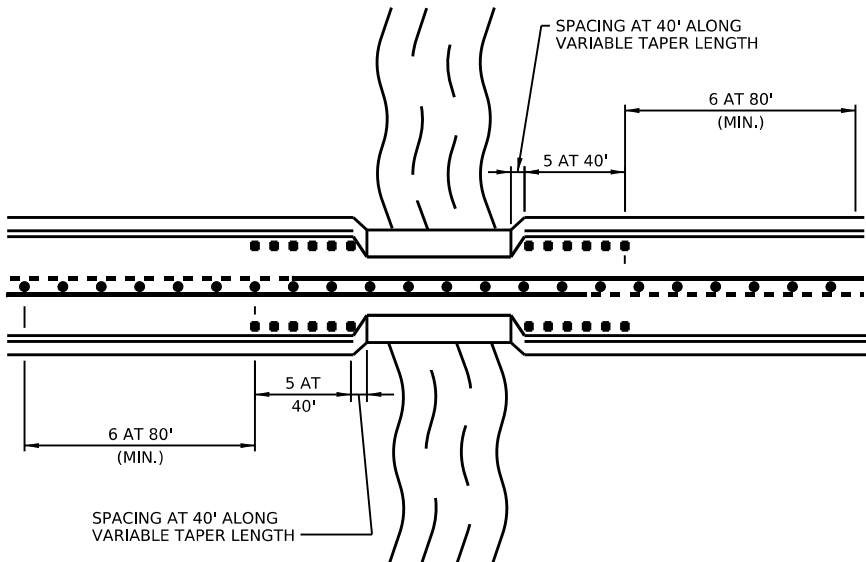
TWO-LANE ROADWAY



UNDIVIDED FOUR LANES



CURVES

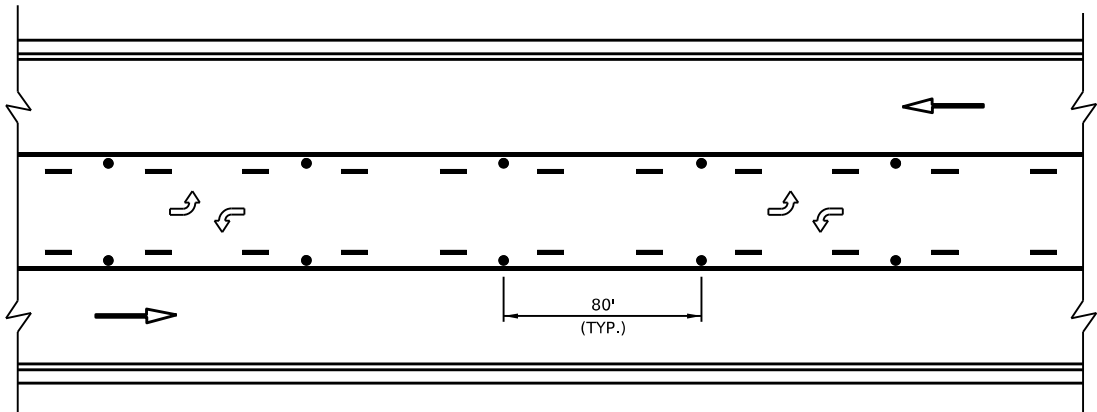


NARROW BRIDGE

ACROSS STRUCTURE USE BARRIER-MOUNT DELINEATORS

NOTES:

1. MARKERS INSTALLED AT THE DOUBLE YELLOW CENTER LINES SHALL BE PLACED BETWEEN THE TWO PAINTED LINES. MARKERS SHALL NOT BE PLACED WITHIN THE LIMITS OF THE PAINTED LINES EXCEPT WHERE LINES DEVIATE VISIBLY FROM THEIR CORRECT ALIGNMENT, AND THEN ONLY WITH THE APPROVAL OF THE ENGINEER.
2. PLACE MARKERS INSTALLED ALONG A LANE LINE (BROKEN LINE) MIDWAY BETWEEN THE PAINTED PORTION.
3. PLACE MARKERS ALONG AN EDGE OR CHANNELIZING LINE WITH THE NEAR EDGE OF THE MARKER CASTING 1" MAXIMUM FROM THE NEAR EDGE OF THE PAINTED LINE.
4. SPACE MARKERS INSTALLED AT THE CENTERLINE AT 80' UNLESS OTHERWISE SHOWN ON THE DRAWINGS. AT LOCATIONS IDENTIFIED AS FOG AREAS OR AREAS WITH A HIGH INCIDENCE OF HEAD-ON OR SIDESWIPE CRASHES, SPACE THE CENTERLINE MARKERS AT 40'.



CENTER LANE LEFT-TURN ONLY

LEGEND

- TWO-WAY MARKER WITH WHITE/BLANK REFLECTOR
- TWO-WAY MARKER WITH YELLOW/YELLOW REFLECTOR
- WHITE
- YELLOW
- - BROKEN WHITE
- - BROKEN YELLOW
- ➔ DIRECTION OF TRAVEL

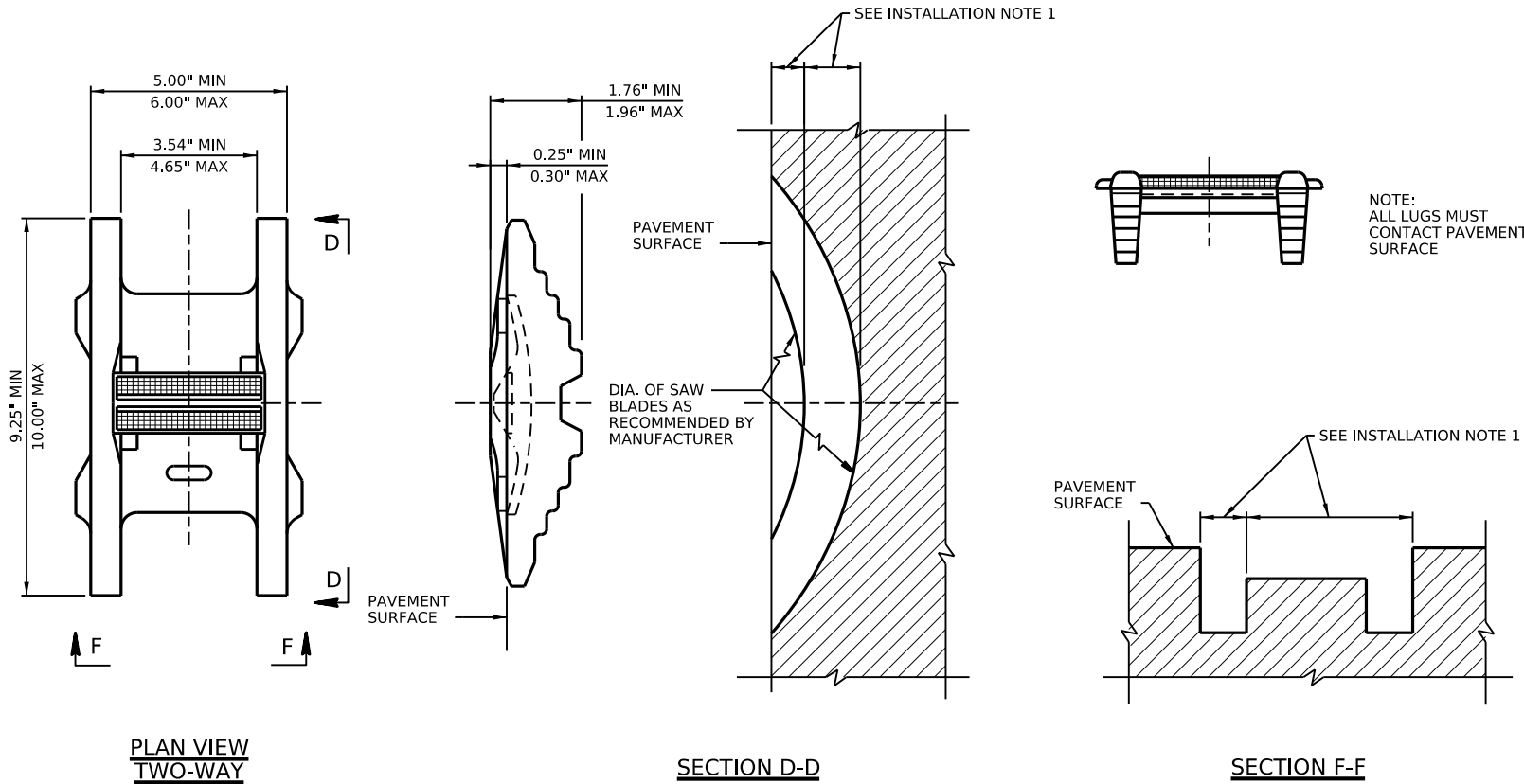
COMMONWEALTH OF PENNSYLVANIA  
DEPARTMENT OF TRANSPORTATION  
BUREAU OF OPERATIONS

SNOWPLOWABLE RAISED  
PAVEMENT MARKERS

RECOMMENDED \_\_\_\_\_  
MANAGER, TRAFFIC ENGINEERING AND  
PERMITS SECTION

RECOMMENDED \_\_\_\_\_  
CHIEF, HIGHWAY SAFETY AND TRAFFIC  
OPERATIONS DIVISION

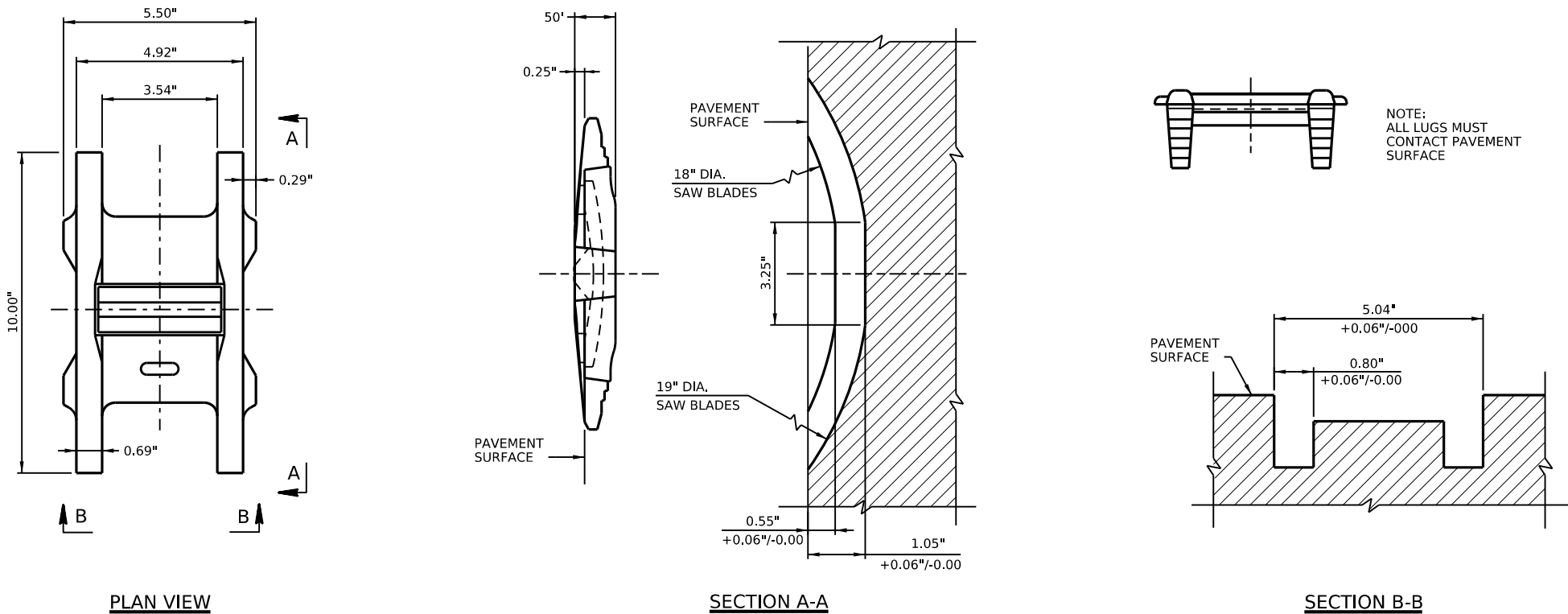
SHEET 3 OF 4  
TC-8602



RAISED PAVEMENT MARKERS

INSTALLATION NOTES:

1. SAW CUT TO DIMENSIONS RECOMMENDED BY MANUFACTURER.
2. INSPECT SAW CUT FOR PROPER FIT OF THE MARKER.
  - PROVIDE APPROXIMATELY 0.125" CLEARANCE (SIDE-TO-SIDE MOVEMENT) FOR THE CASTING WHEN INSERTED INTO THE CUT.
  - INSTALL MARKER WITH ALL LEVELING LUGS IN CONTACT WITH THE PAVEMENT.
  - INSURE THE LEADING EDGES OF THE CASTING LIE BELOW THE PAVEMENT SURFACE.
3. SAW CUT AREAS TO BE DRY AND FREE OF MATERIAL THAT ADVERSELY AFFECTS THE ADHESIVE BOND.
4. INSTALL THE MARKERS WITH TWO-COMPONENT EPOXY ADHESIVE THAT MEETS AASHTO STANDARD SPECIFICATION M237 AND CLASSIFIED AS TYPE IV, BY FIRST FILLING THE SAW CUT TO WITHIN APPROXIMATELY 0.375" OF PAVEMENT SURFACE AND THEN PLACING THE MARKER BY HAND INTO THE EPOXY FILLED SAW CUT. AFTER PLACEMENT OF MARKER, MAKE THE EPOXY FLUSH OR SLIGHTLY BELOW PAVEMENT SURFACE. NO EPOXY SHOULD OBSCURE OR BLOCK THE LENS.



BRIDGE DECK MARKER

COMMONWEALTH OF PENNSYLVANIA  
DEPARTMENT OF TRANSPORTATION  
BUREAU OF OPERATIONS

SNOWPLOWABLE RAISED  
PAVEMENT MARKERS