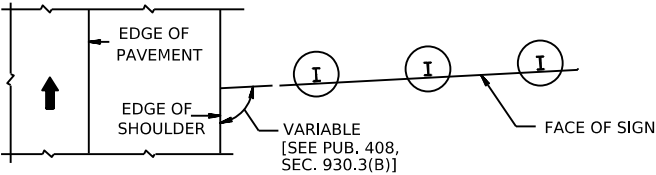


SIGN ELEVATION

GENERAL NOTES:

1. PROVIDE MATERIALS AND CONSTRUCT AS SPECIFIED IN PUBLICATION 408, UNLESS NOTED OTHERWISE.
2. POST #1 IS ALWAYS ADJACENT TO ROADWAY, WHETHER SIGN IS LOCATED ON LEFT OR RIGHT.
3. AT LOCATIONS WITH UNMOUNTABLE CURB, GUIDE RAIL OR BARRIER, PLACE THE NEAR EDGE OF THE SIGN AT LEAST 2 FT. BEHIND THE CURB FACE, GUIDE RAIL OR BARRIER. AT LOCATIONS WITH GUIDE RAIL OR BARRIER, IT IS DESIRABLE TO PLACE POST #1 BEYOND THE DEFLECTION DISTANCE OF THE GUIDE RAIL OR BARRIER. PRIOR TO FABRICATION, DETERMINE ACTUAL LATERAL PLACEMENT IN THE FIELD WITH THE APPROVAL OF THE ENGINEER.
4. LOCATE SIGNS TO AVOID PLACING SUPPORTS IN DRAINAGE DITCHES.
5. MOUNT ALL SIGN PANELS ABOVE POST HINGES.
6. FOR SELECTION OF POSTS, REFER TO POST SELECTION TABLES ON SHEETS 2 THROUGH 4.
7. FOR POST BASE AND HINGE DETAILS, REFER TO SHEET 5.
8. FOR SELECTION OF FOOTING SIZE AND REINFORCEMENT, REFER TO FOOTING SELECTION TABLE ON SHEET 7.
9. FOR DETAIL OF SIGN PANELS AND ATTACHMENT HARDWARE, SEE TRAFFIC STANDARD TC-8701E OR TC-8701S.



PLAN VIEW

DESIGN CRITERIA:

1. DESIGN BASED ON 2001 AASHTO STANDARD SPECIFICATIONS FOR STRUCTURAL SUPPORTS FOR HIGHWAY SIGNS, LUMINAIRES AND TRAFFIC SIGNALS INCLUDING 2002 INTERIM SPECIFICATIONS WITH THE FOLLOWING DESIGN CRITERIA:
 - BASIC WIND SPEED (V) = 90 MPH (3-SECOND GUST)
 - WIND IMPORTANCE FACTOR (I_w) = 0.71 (10 YEAR DESIGN LIFE)
 - BENDING COEFFICIENT (C_b) = 1.30
 - FATIGUE IS NOT CONSIDERED FOR ROADSIDE SIGNS.
2. EMBEDMENT OF FOOTINGS IS BASED ON BROMS' METHOD OUTLINED IN THE AASHTO SPECIFICATIONS. SEE SHEET 7 FOR SOIL PROPERTIES.
3. MINIMUM POST HEIGHT BETWEEN GROUND LEVEL AND BOTTOM OF SIGN WILL BE 7 FT. WHENEVER THE POST IS LOCATED IN THE CLEAR ZONE AS DEFINED IN PUBLICATION 13M.

COMMONWEALTH OF PENNSYLVANIA
DEPARTMENT OF TRANSPORTATION
BUREAU OF OPERATIONS

POST-MOUNTED SIGNS,
TYPE A

ERECTION DETAILS

RECOMMENDED _____
MANAGER, TRAFFIC ENGINEERING AND
PERMITS SECTION

RECOMMENDED _____
CHIEF, HIGHWAY SAFETY AND TRAFFIC
OPERATIONS DIVISION

SHEET 1 OF 7

TC-8702A

POST SELECTION TABLE - TWO POSTS																	
W FT	L _B FT	HEIGHT "H" IN FT															
		4'	5'	6'	7'	8'	9'	10'	11'	12'	13'	14'	15'	16'	17'	18'	19'
6'	7'	P1	P1	P1	P1	P1	P1	P1	P2	P2	P3	P3	P3	P3	P3	-	-
	8'	P1	P1	P1	P1	P1	P1	P2	P2	P2	P3	P3	P3	P3	-	-	-
	9'	P1	P1	P1	P1	P1	P2	P2	P2	P3	P3	P3	P3	-	-	-	-
	10'	P1	P1	P1	P1	P2	P2	P2	P3	P3	P3	P3	-	-	-	-	-
	11'	P1	P1	P1	P1	P2	P2	P3	P3	P3	P3	-	-	-	-	-	-
	12'	P1	P1	P1	P2	P2	P3	P3	P3	P3	-	-	-	-	-	-	-
	13'	P1	P1	P1	P2	P2	P3	P3	P3	P3	-	-	-	-	-	-	-
	14'	P1	P1	P2	P2	P3	P3	P3	P3	-	-	-	-	-	-	-	-
	15'	P1	P2	P2	P2	P3	P3	P3	-	-	-	-	-	-	-	-	-
	16'	P1	P2	P2	P3	P3	P3	P3	-	-	-	-	-	-	-	-	-
	17'	P2	P2	P2	P3	P3	P3	-	-	-	-	-	-	-	-	-	-
	7'	P1	P1	P1	P1	P1	P1	P2	P2	P2	P3	P3	P3	P3	-	-	-
	8'	P1	P1	P1	P1	P1	P2	P2	P2	P3	P3	P3	P3	-	-	-	-
	9'	P1	P1	P1	P1	P2	P2	P2	P3	P3	P3	P3	-	-	-	-	-
	10'	P1	P1	P1	P1	P2	P2	P3	P3	P3	P3	-	-	-	-	-	-
	11'	P1	P1	P1	P2	P2	P2	P3	P3	P3	-	-	-	-	-	-	-
7'	7'	P1	P1	P1	P1	P1	P1	P2	P2	P2	P3	P3	P3	P3	-	-	-
	8'	P1	P1	P1	P1	P1	P2	P2	P2	P3	P3	P3	P3	-	-	-	-
	9'	P1	P1	P1	P1	P2	P2	P2	P3	P3	P3	P3	-	-	-	-	-
	10'	P1	P1	P1	P1	P2	P2	P3	P3	P3	P3	-	-	-	-	-	-
	11'	P1	P1	P1	P2	P2	P2	P3	P3	P3	-	-	-	-	-	-	-
	12'	P1	P1	P1	P2	P2	P3	P3	P3	-	-	-	-	-	-	-	-
	13'	P1	P1	P2	P2	P3	P3	P3	P3	-	-	-	-	-	-	-	-
	14'	P1	P2	P2	P2	P3	P3	P3	-	-	-	-	-	-	-	-	-
	15'	P1	P2	P2	P3	P3	P3	-	-	-	-	-	-	-	-	-	-
	16'	P2	P2	P3	P3	P3	P3	-	-	-	-	-	-	-	-	-	-
	17'	P2	P2	P3	P3	P3	-	-	-	-	-	-	-	-	-	-	-
8'	7'	P1	P1	P1	P1	P1	P2	P2	P2	P3	P3	P3	P3	-	-	-	-
	8'	P1	P1	P1	P1	P1	P2	P2	P3	P3	P3	P3	-	-	-	-	-
	9'	P1	P1	P1	P2	P2	P2	P3	P3	P3	-	-	-	-	-	-	-
	10'	P1	P1	P1	P2	P2	P2	P3	P3	P3	-	-	-	-	-	-	-
	11'	P1	P1	P1	P2	P2	P3	P3	P3	-	-	-	-	-	-	-	-
	12'	P1	P1	P2	P2	P2	P3	P3	P3	-	-	-	-	-	-	-	-
	13'	P1	P1	P2	P3	P3	P3	P3	-	-	-	-	-	-	-	-	-
	14'	P1	P2	P2	P3	P3	P3	-	-	-	-	-	-	-	-	-	-
	15'	P2	P2	P3	P3	P3	P3	-	-	-	-	-	-	-	-	-	-
	16'	P2	P2	P3	P3	P3	-	-	-	-	-	-	-	-	-	-	-
	17'	P2	P3	P3	P3	P3	-	-	-	-	-	-	-	-	-	-	-
9'	7'	P1	P1	P1	P1	P1	P2	P2	P3	P3	P3	P3	P4 *	P4 *	P5 *	P5 *	P7 *
	8'	P1	P1	P1	P1	P2	P2	P3	P3	P3	P3	P4 *	P4 *	P5 *	P5 *	P7 *	P7 *
	9'	P1	P1	P1	P2	P2	P2	P3	P3	P3	P4 *	P5 *	P5 *	P5 *	P7 *	P7 *	P7 *
	10'	P1	P1	P1	P2	P2	P3	P3	P3	P3	P4 *	P5 *	P5 *	P7 *	P7 *	P7 *	P8 *
	11'	P1	P1	P2	P2	P3	P3	P3	P3	P4 *	P5 *	P5 *	P5 *	P7 *	P7 *	P7 *	P8 *
	12'	P1	P1	P2	P2	P3	P3	P3	P4 *	P5 *	P5 *	P5 *	P7 *	P7 *	P7 *	P8 *	P10 *
	13'	P1	P2	P2	P3	P3	P3	P4 *	P5 *	P5 *	P5 *	P7 *	P7 *	P7 *	P8 *	P9 *	P10 *
	14'	P1	P2	P3	P3	P3	P3	P4 *	P5 *	P6 *	P7 *	P7 *	P8 *	P8 *	P10 *	P10 *	P10 *
	15'	P2	P2	P3	P3	P3	P4 *	P5 *	P5 *	P5 *	P7 *	P7 *	P7 *	P8 *	P10 *	P10 *	P10 *
	16'	P2	P3	P3	P3	P3	P4 *	P5 *	P5 *	P7 *	P7 *	P7 *	P8 *	-	-	-	-
	17'	P2	P3	P3	P3	P4 *	P5 *	P5 *	P6 *	P7 *	P7 *	P8 *	P8 *	-	-	-	-
10'	7'	P1	P1	P1	P1	P2	P2	P2	P3	P3	P3	P4 *	P4 *	P5 *	P5 *	P6 *	-
	8'	P1	P1	P1	P1	P2	P2	P3	P3	P3	P3	P4 *	P5 *	P5 *	P7 *	P7 *	P7 *
	9'	P1	P1	P1	P2	P2	P3	P3	P3	P3	P4 *	P5 *	P5 *	P7 *	P7 *	P7 *	P8 *
	10'	P1	P1	P2	P2	P2	P3	P3	P3	P4 *	P5 *	P5 *	P5 *	P7 *	P7 *	P7 *	P8 *
	11'	P1	P1	P2	P2	P3	P3	P3	P3	P4 *	P5 *	P5 *	P5 *	P7 *	P7 *	P8 *	P10 *
	12'	P1	P2	P2	P3	P3	P3	P3	P4 *	P5 *	P5 *	P5 *	P7 *	P7 *	P8 *	P9 *	P10 *
	13'	P1	P2	P2	P3	P3	P3	P4 *	P5 *	P5 *	P6 *	P7 *	P7 *	P8 *	P8 *	P10 *	P10 *
	14'	P2	P2	P3	P3	P3	P4 *	P4 *	P5 *	P5 *	P7 *	P7 *	P7 *	P8 *	P10 *	P10 *	P10 *
	15'	P2	P3	P3	P3	P4 *	P5 *	P5 *	P5 *	P7 *	P7 *	P7 *	P8 *	P10 *	P10 *	P10 *	P10 *
	16'	P2	P3	P3	P3	P4 *	P5 *	P5 *	P6 *	P7 *	P7 *	P8 *	P9 *	-	-	-	-
	17'	P2	P3	P3	P4 *	P4 *	P5 *	P5 *	P7 *	P7 *	P7 *	P8 *	-	-	-	-	-
11'	7'	P1	P1	P1	P1	P2	P2	P3	P3	P3	P3	P4 *	P5 *	P5 *	P6 *	P7 *	P7 *
	8'	P1	P1	P1	P2	P2	P3	P3	P3	P3	P4 *	P5 *	P5 *	P5 *	P7 *	P7 *	P8 *
	9'	P1	P1	P1	P2	P2	P3	P3	P3	P4 *	P4 *	P5 *	P5 *	P7 *	P7 *	P7 *	P8 *
	10'	P1	P1	P2	P2	P3	P3	P3	P3	P4 *	P5 *	P5 *	P5 *	P7 *	P7 *	P7 *	P8 *
	11'	P1	P2	P2	P3	P3	P3	P3	P4 *	P5 *	P5 *	P5 *	P7 *	P7 *	P7 *	P8 *	P10 *
	12'	P1	P2	P2	P3	P3	P3	P4 *	P5 *	P5 *	P6 *	P7 *	P7 *	P8 *	P9 *	P10 *	P10 *
	13'	P1	P2	P2	P3	P3	P4 *	P5 *	P5 *	P7 *	P7 *	P7 *	P8 *	P10 *	P10 *	P10 *	P10 *
	14'	P2	P2	P3	P3	P3	P4 *	P5 *	P5 *	P7 *	P7 *	P7 *	P8 *	P10 *	P10 *	P10 *	P10 *
	15'	P2	P3	P3	P3	P4 *	P5 *	P5 *	P5 *	P7 *	P7 *	P7 *	P8 *	P9 *	P10 *	P10 *	-
	16'	P2	P3	P3	P4 *	P4 *	P5 *	P5 *	P7 *	P7 *	P7 *	P8 *	-	-	-	-	-
	17'	P3	P3	P3	P4 *	P5 *	P5 *	P7 *	P7 *	P7 *	P8 *	-	-	-	-	-	-
12'	7'	P1	P1	P1	P1	P2	P2	P3	P3	P3	P4	P4	P5	P6	P7	P7	P7
	8'	P1	P1	P1	P2	P2	P3	P3	P3	P3	P4	P5	P5	P7	P7	P7	P8
	9'	P1	P1	P2	P2	P3	P3	P3	P3	P4	P5	P5	P7	P7	P7	P8	P10
	10'	P1	P1	P2	P2	P3	P3	P3	P4	P4	P5	P7	P7	P7	P8	P9	P10
	11'	P1	P2	P2	P3	P3	P3	P4	P5	P5	P5	P7	P7	P7	P8	P10	P10
	12'	P1	P2	P2	P3	P3	P4	P4	P5	P5	P7	P7	P7	P8	P10	P10	P10
	13'	P2	P2	P3	P3	P3	P4	P5	P5	P5	P7	P7	P8	P10	P10	P10	-
	14'	P2	P3	P3	P3	P4	P5	P5	P5	P7	P7	P8	P9	P10	P10	P10	-
	15'	P2	P3	P3	P4	P5	P5	P5	P7	P7	P7	P8	P10	P10	P10	-	-
	16'	P2	P3	P3	P4	P5	P5	P7	P7	P7	P8	-	-	-	-	-	-
	17'	P3	P3	P3	P4	P5	P5	P7	P7	P7	P9	-	-	-	-	-	-
13'	7'	P1	P1	P1	P2	P2	P3	P3	P3	P4	P5	P6	P6	P7	P7	P7	P8
	8'	P1	P1	P1	P2	P2	P3	P3	P3	P4	P4	P5	P6	P7	P7	P8	P9
	9'	P1	P1	P2	P2	P3	P3	P3	P4	P4	P5	P5	P7	P7	P8	P9	P10
	10'	P1	P2	P2	P2	P3	P3	P3	P4	P5	P5	P7	P7	P7	P8	P10	P10
	11'	P1	P2	P2	P3	P3	P3	P4	P5	P5	P7	P7	P7	P8	P10	P10	P10
	12'	P1	P2	P3	P3	P3	P4	P5	P5	P7	P7	P8	P10	P10	P10	P10	P10
	13'	P2	P2	P3	P3	P4	P4	P5	P5	P7	P7	P8	P9	P10	P10	P10	-
	14'	P2	P3	P3	P3	P4	P5	P5	P7	P7	P7	P8	P10	P10	P10	-	-
	15'	P2	P3	P3	P4	P5	P5	P6	P7	P7	P8	P10	P10	P10	-	-	-
	16'	P3	P3	P3	P4	P5	P5	P7	P7	P8	-	-	-	-	-	-	-
	17'	P3	P3	P4	P5	P5	P7	P7	P7	P8	-	-	-	-	-	-	-
14'	7'	P1	P1	P1	P2	P2	P3	P3	P3	P4	P4	P5	P6	P7	P7	P7	P9
	8'	P1	P1	P2	P2	P3	P3	P3	P3	P4	P5	P5	P7	P7	P7	P8	P10
	9'	P1	P1	P2	P2	P3	P3	P3	P3	P4	P5	P5	P7	P7	P8	P10	P10
	10'	P1	P2	P2	P3	P3	P3	P4	P5	P5	P7	P7	P7	P8	P10	P10	P10
	11'	P1	P2	P2	P3	P3	P3	P4	P5	P5	P7	P7	P8	P9	P10	P10	P10
	12'	P2	P2	P3	P3	P3	P4	P5	P5	P7	P7	P7	P8	P10	P10	P10	-
	13'	P2	P2	P3	P3	P4	P5	P5	P7	P7	P7	P8	P10	P10	P10	-	-
	14'	P2	P3	P3	P4	P4	P5	P5	P7	P7	P8	P8	P10	P10	-	-	-
	15'	P3	P3	P3	P4	P5	P5	P7	P7	P7	P8	P10	P10	-	-	-	-
	16'	P3	P3	P4	P4	P5	P6	P7	P7	P8	-	-	-	-	-	-	-
	17'	P3	P3	P4	P5	P5	P7	P7	P7	P8	-	-	-	-	-	-	-

LEGEND:

- P1 = W6 x 9
- P2 = W6 x 1

PLOTTED: \$\$\$\$DATE\$\$\$\$

(TABLE CONTINUED FROM SHEET 2)

POST SELECTION TABLE - TWO POSTS																		
W (FEET)	L _B (FEET)	HEIGHT "H" (FEET)																
		4'	5'	6'	7'	8'	9'	10'	11'	12'	13'	14'	15'	16'	17'	18'	19'	
15'	7'	P1	P1	P1	P2	P2	P3	P3	P3	P3	P4	P5	P6	P6	P7	P7	P8	P10
	8'	P1	P1	P2	P2	P3	P3	P3	P3	P4	P4	P5	P6	P7	P7	P8	P10	P10
	9'	P1	P1	P2	P3	P3	P3	P3	P4	P4	P5	P5	P7	P7	P8	P9	P10	P10
	10'	P1	P2	P2	P3	P3	P3	P3	P4	P5	P5	P7	P7	P7	P8	P10	P10	P10
	11'	P1	P2	P3	P3	P3	P3	P4	P5	P5	P7	P7	P7	P8	P10	P10	P10	-
	12'	P2	P2	P3	P3	P3	P3	P4	P5	P5	P7	P7	P8	P9	P10	P10	-	-
	13'	P2	P3	P3	P3	P4	P5	P5	P7	P7	P7	P8	P9	P10	P10	P10	-	-
	14'	P2	P3	P3	P4	P5	P5	P7	P7	P7	P8	P10	P10	P10	-	-	-	-
	15'	P3	P3	P3	P4	P5	P5	P7	P7	P8	P10	P10	P10	-	-	-	-	-
16'	16'	P3	P3	P4	P5	P5	P7	P7	P8	P9	-	-	-	-	-	-	-	-
	17'	P3	P4	P5	P5	P7	P7	P8	P9	-	-	-	-	-	-	-	-	-
	7'	P1	P1	P2	P2	P3	P3	P3	P4	P5	P5	P6	P7	P7	P7	P8	P10	P10
	8'	P1	P2	P2	P3	P3	P3	P4	P5	P5	P5	P7	P7	P8	P9	P10	P10	P10
	9'	P1	P2	P2	P3	P3	P3	P4	P5	P5	P7	P7	P8	P9	P10	P10	P10	-
	10'	P1	P2	P3	P3	P3	P4	P5	P5	P7	P7	P7	P8	P9	P10	P10	P10	-
	11'	P2	P2	P3	P3	P3	P4	P5	P5	P7	P7	P8	P10	P10	P10	P10	-	-
	12'	P2	P3	P3	P3	P4	P5	P5	P7	P7	P7	P8	P10	P10	P10	P10	-	-
	13'	P2	P3	P3	P4	P5	P5	P7	P7	P8	P10	P10	P10	-	-	-	-	-
17'	14'	P2	P3	P3	P4	P5	P5	P7	P7	P8	P9	P10	P10	P10	-	-	-	-
	15'	P3	P3	P4	P5	P5	P7	P7	P8	P10	P10	P10	-	-	-	-	-	-
	16'	P3	P3	P4	P5	P5	P7	P7	P8	-	-	-	-	-	-	-	-	-
	17'	P3	P4	P5	P5	P7	P7	P8	P9	-	-	-	-	-	-	-	-	-
	7'	P1	P1	P2	P2	P3	P3	P3	P4	P5	P5	P6	P7	P7	P7	P8	P10	P10
	8'	P1	P1	P2	P2	P3	P3	P3	P4	P5	P5	P5	P7	P7	P7	P8	P10	P10
	9'	P1	P2	P2	P3	P3	P3	P4	P5	P5	P7	P7	P8	P9	P10	P10	P10	P10
	10'	P1	P2	P3	P3	P3	P4	P5	P5	P7	P7	P7	P8	P10	P10	P10	P10	-
	11'	P2	P2	P3	P3	P3	P4	P5	P5	P6	P7	P7	P8	P10	P10	P10	-	-
18'	12'	P2	P3	P3	P3	P4	P5	P5	P7	P7	P7	P8	P10	P10	P10	P10	-	-
	13'	P2	P3	P3	P4	P5	P5	P7	P7	P7	P8	P10	P10	P10	-	-	-	-
	14'	P2	P3	P3	P4	P5	P5	P7	P7	P8	P10	P10	P10	-	-	-	-	-
	15'	P3	P3	P4	P5	P5	P7	P7	P8	P10	P10	P10	-	-	-	-	-	-
	16'	P3	P3	P4	P5	P7	P7	P7	P8	-	-	-	-	-	-	-	-	-
	17'	P3	P4	P5	P5	P7	P7	P8	-	-	-	-	-	-	-	-	-	-
	7'	P1	P1	P2	P2	P3	P3	P3	P4	P5	P6	P6	P7	P7	P7	P8	P9	P10
	8'	P1	P1	P2	P3	P3	P3	P4	P4	P5	P6	P7	P7	P8	P10	P10	P10	P10
	9'	P1	P2	P2	P3	P3	P3	P4	P5	P5	P7	P7	P8	P10	P10	P10	P10	-
19'	10'	P1	P2	P3	P3	P4	P5	P5	P7	P7	P7	P8	P10	P10	P10	P10	-	-
	11'	P2	P2	P3	P3	P4	P5	P5	P7	P7	P8	P10	P10	P10	-	-	-	-
	12'	P2	P3	P3	P4	P5	P5	P7	P7	P8	P9	P10	P10	P10	-	-	-	-
	13'	P2	P3	P3	P4	P5	P6	P7	P7	P8	P10	P10	P10	-	-	-	-	-
	14'	P3	P3	P4	P5	P5	P7	P7	P8	P10	P10	P10	-	-	-	-	-	-
	15'	P3	P3	P4	P5	P7	P7	P9	P10	P10	-	-	-	-	-	-	-	-
	16'	P3	P4	P5	P5	P7	P7	P8	-	-	-	-	-	-	-	-	-	-
	17'	P3	P4	P5	P7	P7	P8	P9	-	-	-	-	-	-	-	-	-	-
	7'	P1	P1	P2	P2	P3	P3	P4	P4	P5	P6	P6	P7	P7	P7	P8	P9	P10
20'	8'	P1	P2	P3	P3	P4	P5	P5	P7	P7	P7	P7	P10	P10	P10	P10	-	-
	9'	P1	P2	P3	P3	P4	P5	P5	P7	P7	P7	P8	P10	P10	P10	-	-	-
	10'	P2	P2	P3	P3	P4	P5	P5	P7	P7	P8	P10	P10	P10	-	-	-	-
	11'	P2	P3	P3	P4	P5	P5	P7	P7	P8	P10	P10	P10	-	-	-	-	-
	12'	P2	P3	P3	P4	P5	P5	P7	P7	P8	P10	P10	P10	-	-	-	-	-
	13'	P3	P3	P3	P5	P5	P7	P7	P9	P10	P10	-	-	-	-	-	-	-
	14'	P3	P3	P4	P5	P5	P7	P7	P8	P10	P10	P10	-	-	-	-	-	-
	15'	P3	P4	P5	P5	P7	P7	P8	P10	P10	P10	-	-	-	-	-	-	-
	16'	P3	P4	P5	P5	P7	P7	P8	-	-	-	-	-	-	-	-	-	-
21'	17'	P3	P4	P5	P7	P7	P8	-	-	-	-	-	-	-	-	-	-	-
	7'	P1	P1	P2	P3	P3	P4	P5	P6	P6	P7	P7	P7	P8	P10	P10	P10	P10
	8'	P1	P2	P3	P3	P4	P5	P5	P7	P7	P7	P8	P10	P10	P10	P10	-	-
	9'	P1	P2	P3	P3	P4	P5	P5	P7	P7	P8	P10	P10	P10	-	-	-	-
	10'	P2	P2	P3	P3	P4	P5	P5	P7	P7	P8	P10	P10	P10	-	-	-	-
	11'	P2	P3	P3	P4	P5	P5	P7	P7	P8	P10	P10	P10	-	-	-	-	-
	12'	P2	P3	P3	P4	P5	P5	P7	P7	P8	P10	P10	P10	-	-	-	-	-
	13'	P3	P3	P3	P5	P5	P7	P7	P8	P10	P10	P10	-	-	-	-	-	-
	14'	P3	P3	P4	P5	P6	P7	P7	P9	P10	P10	-	-	-	-	-	-	-
22'	15'	P3	P4	P5	P5	P7	P7	P8	P10	P10	P10	-	-	-	-	-	-	-
	16'	P3	P4	P5	P7	P7	P8	P10	P10	P10	-	-	-	-	-	-	-	-
	17'	P4	P5	P5	P7	P7	P8	-	-	-	-	-	-	-	-	-	-	-

LEGEND:

- P1 = W6 x 9
- P2 = W6 x 12
- P3 = W6 x 15
- P4 = W8 x 18
- P5 = W8 x 21
- P6 = W10 x 22
- P7 = W10 x 26
- P8 = W14 x 30
- P9 = W18 x 35
- P10 = W18 x 40

NOTE:

- 1. SEE SHEET 2 FOR SIGN POST SELECTION NOTES AND SHEET 4 FOR SIGNS ON THREE POSTS.

COMMONWEALTH OF PENNSYLVANIA
DEPARTMENT OF TRANSPORTATION
BUREAU OF OPERATIONS

POST-MOUNTED SIGNS,
TYPE A

POST SELECTION TABLE

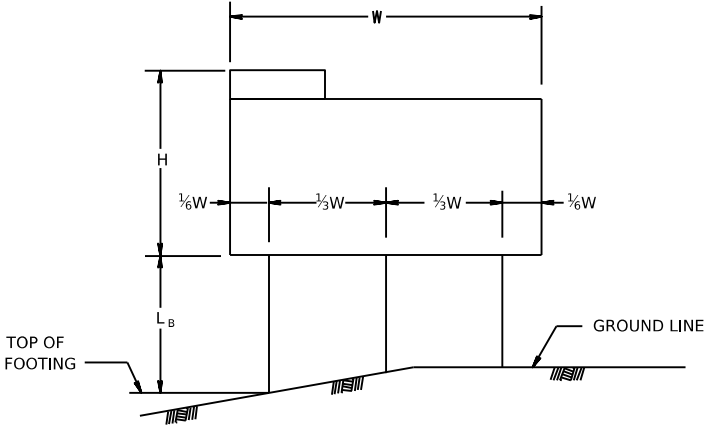
RECOMMENDED _____
MANAGER, TRAFFIC ENGINEERING AND PERMITS SECTION

RECOMMENDED _____
CHIEF, HIGHWAY SAFETY AND TRAFFIC OPERATIONS DIVISION

POST SELECTION TABLE - THREE POSTS															
W (FEET)	L _B (FEET)	HEIGHT "H" (FEET)													
		4'	5'	6'	7'	8'	9'	10'	11'	12'	13'	14'	15'	16'	
22'	7'	P1	P1	P1	P2	P2	P3	P3	P3	P4	P4	P5	P5	P7	P7
	8'	P1	P1	P2	P2	P3	P3	P3	P3	P4	P4	P5	P5	P7	P7
	9'	P1	P1	P2	P2	P3	P3	P3	P3	P4	P5	P5	P7	P7	P8
	10'	P1	P2	P2	P2	P3	P3	P3	P4	P5	P5	P7	P7	P7	P8
	11'	P1	P2	P3	P3	P3	P4	P4	P5	P7	P7	P7	P8	P8	P10
	12'	P2	P2	P3	P3	P3	P4	P5	P5	P7	P7	P8	P8	P9	P10
	13'	P2	P3	P3	P3	P4	P5	P5	P7	P7	P7	P8	P10	P10	P10
	14'	P2	P3	P3	P4	P5	P5	P7	P7	P7	P8	P10	P10	P10	P10
	15'	P3	P3	P3	P4	P5	P5	P7	P7	P8	-	-	-	-	-
	16'	P3	P3	P4	P5	P5	P7	P7	P7	P8	-	-	-	-	-
23'	7'	P1	P1	P1	P2	P2	P3	P3	P3	P4	P5	P5	P6	P6	P7
	8'	P1	P1	P2	P2	P3	P3	P3	P3	P4	P5	P5	P6	P7	P7
	9'	P1	P2	P2	P3	P3	P3	P4	P4	P5	P5	P7	P7	P7	P8
	10'	P1	P2	P2	P3	P3	P3	P4	P5	P5	P7	P7	P7	P8	P9
	11'	P2	P2	P3	P3	P3	P4	P5	P5	P7	P7	P7	P8	P8	P10
	12'	P2	P2	P3	P3	P4	P5	P5	P7	P7	P7	P8	P10	P10	P10
	13'	P2	P3	P3	P3	P4	P5	P5	P7	P7	P8	P10	P10	P10	P10
	14'	P2	P3	P3	P4	P5	P5	P7	P7	P7	P8	P10	P10	P10	P10
	15'	P3	P3	P4	P4	P5	P6	P7	P7	P8	-	-	-	-	-
	16'	P3	P3	P4	P5	P5	P7	P7	P8	P9	-	-	-	-	-
24'	7'	P1	P1	P1	P2	P2	P3	P3	P3	P4	P5	P6	P7	P7	P7
	8'	P1	P1	P2	P2	P3	P3	P3	P4	P5	P5	P6	P7	P7	P7
	9'	P1	P2	P2	P2	P3	P3	P3	P4	P5	P5	P7	P7	P7	P8
	10'	P1	P2	P2	P3	P3	P4	P4	P5	P5	P7	P7	P8	P8	P10
	11'	P2	P2	P3	P3	P3	P4	P5	P5	P7	P7	P8	P9	P9	P10
	12'	P2	P2	P3	P3	P4	P5	P5	P7	P7	P7	P8	P10	P10	P10
	13'	P2	P3	P3	P4	P5	P5	P6	P7	P7	P8	P10	P10	P10	P10
	14'	P2	P3	P3	P4	P5	P5	P7	P7	P8	P9	P10	P10	P10	-
	15'	P3	P3	P4	P5	P5	P7	P7	P7	P8	-	-	-	-	-
	16'	P3	P3	P4	P5	P5	P7	P7	P8	-	-	-	-	-	-
25'	7'	P1	P1	P2	P2	P3	P3	P3	P4	P5	P5	P6	P7	P7	P7
	8'	P1	P1	P2	P2	P3	P3	P3	P4	P5	P5	P7	P7	P7	P7
	9'	P1	P2	P2	P2	P3	P3	P4	P5	P5	P6	P7	P7	P7	P8
	10'	P1	P2	P2	P3	P3	P4	P4	P5	P5	P7	P7	P8	P8	P10
	11'	P2	P2	P3	P3	P3	P4	P5	P6	P7	P7	P8	P10	P10	P10
	12'	P2	P3	P3	P3	P4	P5	P5	P7	P7	P8	P9	P10	P10	P10
	13'	P2	P3	P3	P4	P5	P5	P7	P7	P7	P8	P10	P10	P10	P10
	14'	P2	P3	P3	P4	P5	P5	P7	P7	P8	P10	P10	P10	P10	-
	15'	P3	P3	P4	P5	P5	P7	P7	P8	P9	-	-	-	-	-
	16'	P3	P3	P4	P5	P6	P7	P7	P8	-	-	-	-	-	-
26'	7'	P1	P1	P2	P2	P3	P3	P3	P4	P5	P6	P6	P7	P7	P7
	8'	P1	P1	P2	P2	P3	P3	P3	P4	P5	P6	P7	P7	P7	P7
	9'	P1	P2	P2	P3	P3	P3	P4	P5	P5	P7	P7	P8	P8	P9
	10'	P1	P2	P3	P3	P3	P4	P5	P5	P7	P7	P8	P9	P9	P10
	11'	P2	P2	P3	P3	P4	P4	P5	P7	P7	P7	P8	P10	P10	P10
	12'	P2	P3	P3	P3	P4	P5	P5	P7	P7	P8	P10	P10	P10	P10
	13'	P2	P3	P3	P4	P5	P5	P7	P7	P8	P9	P10	P10	P10	-
	14'	P3	P3	P4	P4	P5	P7	P7	P7	P8	P10	P10	P10	P10	-
	15'	P3	P3	P4	P5	P5	P7	P7	P8	-	-	-	-	-	-
	16'	P3	P4	P4	P5	P7	P7	P7	P9	-	-	-	-	-	-
27'	7'	P1	P1	P2	P2	P3	P3	P3	P4	P5	P6	P6	P7	P7	P7
	8'	P1	P2	P2	P2	P3	P3	P3	P4	P5	P5	P6	P7	P7	P8
	9'	P1	P2	P2	P3	P3	P3	P4	P5	P5	P7	P7	P8	P8	P10
	10'	P2	P2	P3	P3	P3	P4	P5	P5	P7	P7	P8	P10	P10	P10
	11'	P2	P2	P3	P3	P4	P5	P5	P7	P7	P8	P9	P10	P10	P10
	12'	P2	P3	P3	P3	P4	P5	P7	P7	P7	P8	P10	P10	P10	P10
	13'	P2	P3	P3	P4	P5	P5	P7	P7	P8	P10	P10	P10	P10	-
	14'	P3	P3	P4	P5	P5	P7	P7	P7	P9	P10	P10	-	-	-
	15'	P3	P3	P4	P5	P5	P7	P7	P8	-	-	-	-	-	-
	16'	P3	P4	P5	P5	P7	P7	P8	-	-	-	-	-	-	-
28'	7'	P1	P1	P2	P2	P3	P3	P3	P4	P5	P6	P7	P7	P7	P7
	8'	P1	P2	P2	P3	P3	P3	P4	P5	P5	P7	P7	P7	P7	P8
	9'	P1	P2	P2	P3	P3	P3	P4	P5	P5	P7	P7	P7	P8	P10
	10'	P2	P2	P3	P3	P3	P4	P5	P5	P7	P7	P8	P10	P10	P10
	11'	P2	P2	P3	P3	P4	P5	P5	P7	P7	P8	P9	P10	P10	P10
	12'	P2	P3	P3	P3	P4	P5	P7	P7	P7	P9	P10	P10	P10	P10
	13'	P2	P3	P3	P4	P5	P5	P7	P7	P8	P10	P10	P10	P10	-
	14'	P3	P3	P4	P5	P5	P7	P7	P8	P10	P10	P10	-	-	-
	15'	P3	P3	P4	P5	P6	P7	P7	P8	-	-	-	-	-	-
	16'	P3	P4	P5	P5	P7	P7	P8	-	-	-	-	-	-	-
29'	7'	P1	P1	P2	P2	P3	P3	P3	P4	P5	P6	P7	P7	P7	P7
	8'	P1	P2	P2	P3	P3	P3	P4	P5	P5	P7	P7	P7	P9	P10
	9'	P1	P2	P2	P3	P3	P3	P4	P5	P5	P7	P7	P8	P10	P10
	10'	P2	P3	P3	P3	P4	P5	P5	P7	P7	P8	P10	P10	P10	P10
	11'	P2	P3	P3	P3	P4	P5	P7	P7	P8	P9	P10	P10	P10	-
	12'	P2	P3	P3	P4	P5	P6	P7	P7	P8	P10	P10	P10	P10	-
	13'	P3	P3	P4	P5	P5	P7	P7	P8	P10	P10	P10	-	-	-
	14'	P3	P3	P4	P5	P5	P7	P7	P8	P10	P10	P10	-	-	-
	15'	P3	P4	P5	P5	P7	P7	P8	-	-	-	-	-	-	-
	16'	P3	P4	P5	P7	P7	P8	-	-	-	-	-	-	-	-
30'	7'	P1	P1	P2	P2	P3	P3	P4	P4	P6	P6	P7	P7	P7	P8
	8'	P1	P2	P2	P3	P3	P3	P4	P5	P6	P7	P7	P7	P7	P8
	9'	P1	P2	P3	P3	P3	P4	P5	P5	P7	P7	P7	P10	P10	P10
	10'	P2	P2	P3	P3	P4	P4	P5	P5	P7	P8	P9	P10	P10	P10
	11'	P2	P3	P3	P3	P4	P5	P5	P7	P7	P8	P10	P10	P10	P10
	12'	P2	P3	P3	P4	P5	P5	P7	P7	P8	P10	P10	P10	P10	-
	13'	P3	P3	P3	P5	P5	P7	P7	P8	P9	P10	P10	-	-	-
	14'	P3	P3	P4	P5	P5	P7	P7	P8	P10	P10	P10	-	-	-
	15'	P3	P4	P5	P5	P7	P7	P8	-	-	-	-	-	-	-
	16'	P3	P4	P5	P5	P7	P7	P8	-	-	-	-	-	-	-
	17'	P3	P5	P5	P7	P7	P8	-	-	-	-	-	-	-	-

LEGEND:

- P1 = W6 x 9
- P2 = W6 x 12
- P3 = W6 x 15
- P4 = W8 x 18
- P5 = W8 x 21
- P6 = W10 x 22
- P7 = W10 x 26
- P8 = W14 x 30
- P9 = W18 x 35
- P10 = W18 x 40



SIGN ON THREE POSTS
SKETCH B

NOTE:

- 1. SEE SHEETS 2 AND 3 FOR SIGN POST SELECTION NOTES AND SIGNS ON TWO POSTS.

COMMONWEALTH OF PENNSYLVANIA
DEPARTMENT OF TRANSPORTATION
BUREAU OF OPERATIONS

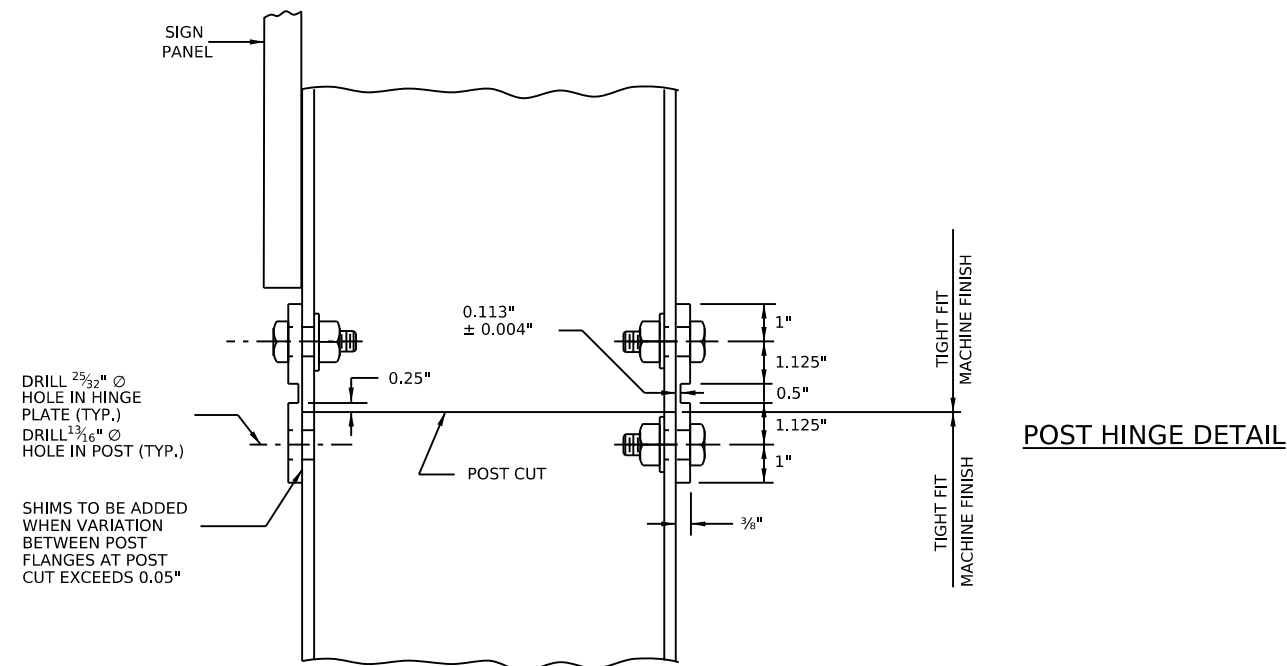
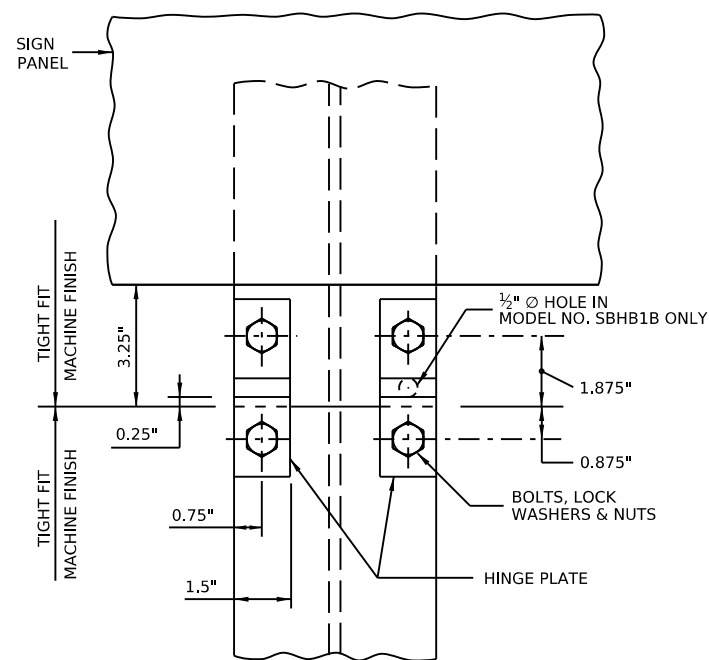
POST-MOUNTED SIGNS,
TYPE A

POST SELECTION TABLE

RECOMMENDED
MANAGER, TRAFFIC ENGINEERING AND PERMITS SECTION

RECOMMENDED
CHIEF, HIGHWAY SAFETY AND TRAFFIC OPERATIONS DIVISION

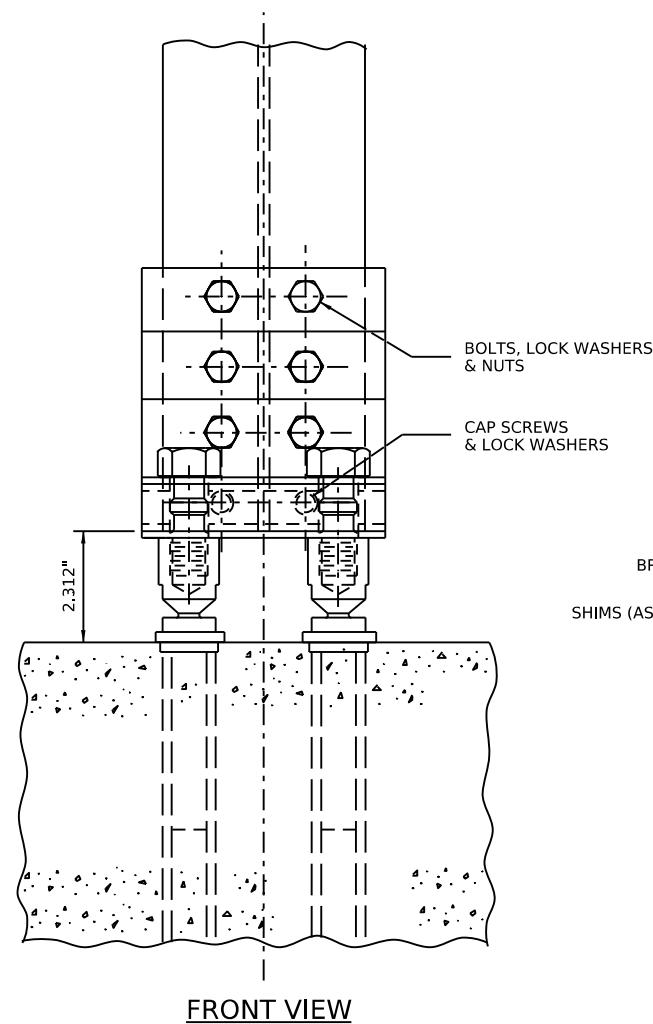
SHEET 4 OF 7
TC-8702A



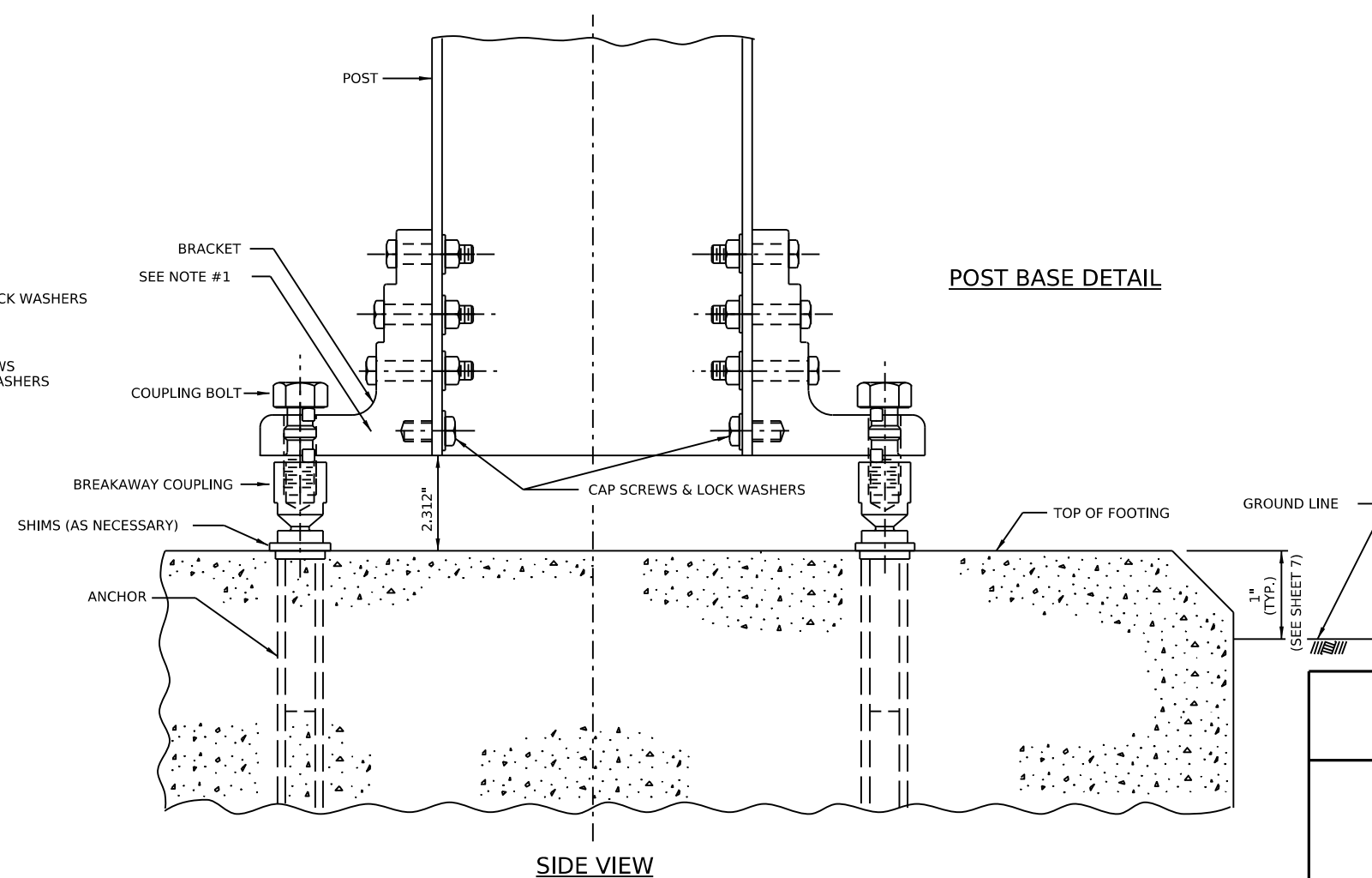
POST HINGE DETAIL

NOTES:

1. THE BRACKET NUMBER IS STAMPED ON THE BRACKET.
2. BOLT THE BRACKETS TO POST, THEN PLACE POST AND CONNECTED BRACKET TO BREAKAWAY COUPLING.
3. FOR BRACKET, BREAKAWAY COUPLING, COUPLING BOLT, AND SHIM DETAILS, REFER TO SHEET 6.
4. FOR FOOTING AND ANCHOR DETAILS, REFER TO SHEET 7.
5. ALL BOLTS SHALL BE TIGHTENED IN ACCORDANCE WITH THE MANUFACTURER'S SPECIFICATIONS. FASTENERS, EXCEPT FOR SPECIAL BOLT AND COUPLING, ARE INSTALLED WITH LOCKWASHERS. FASTENERS, INCLUDING SPECIAL BOLT AND COUPLING, SHOULD BE SECURED AS TIGHT AS POSSIBLE WITH CONVENTIONAL WRENCHES. DO NOT USE A PIPE WRENCH. USE LOWER WRENCH FLATS TO TIGHTEN COUPLINGS INTO ANCHORS. TIGHTEN SPECIAL BOLTS WHILE HOLDING COUPLINGS BY THE UPPER WRENCH FLATS WITH AN ADDITIONAL WRENCH TO PREVENT AN INDUCED TORQUE STRESS ACROSS THE NECKED PORTION OF THE COUPLING.
6. SHIMS BETWEEN THE COUPLINGS AND ANCHORS SHOULD BE LIMITED TO TWO SHIMS UNDERNEATH ANY ONE COUPLING AND THREE SHIMS UNDERNEATH ANY TWO COUPLINGS.



FRONT VIEW



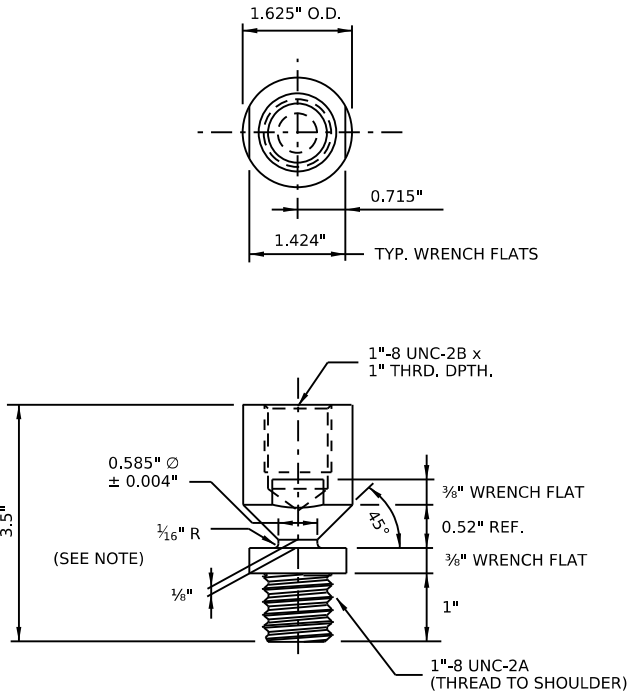
POST BASE DETAIL

BREAKAWAY ASSEMBLIES

TO BE FROM A SUPPLIER
LISTED IN BULLETIN 15.

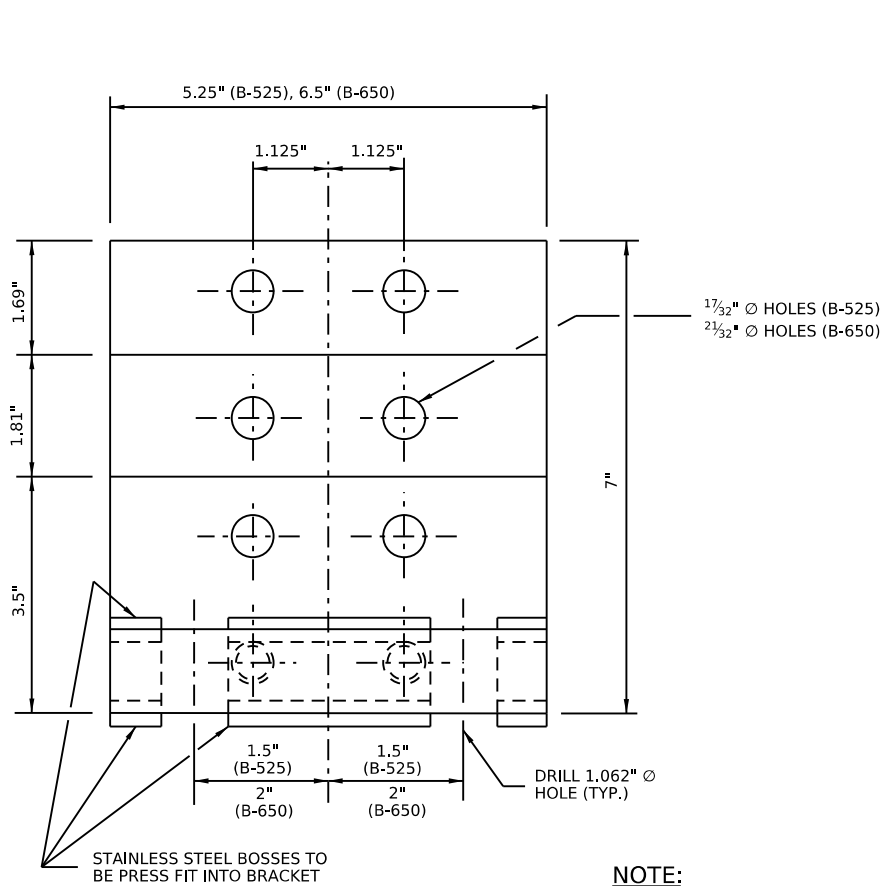
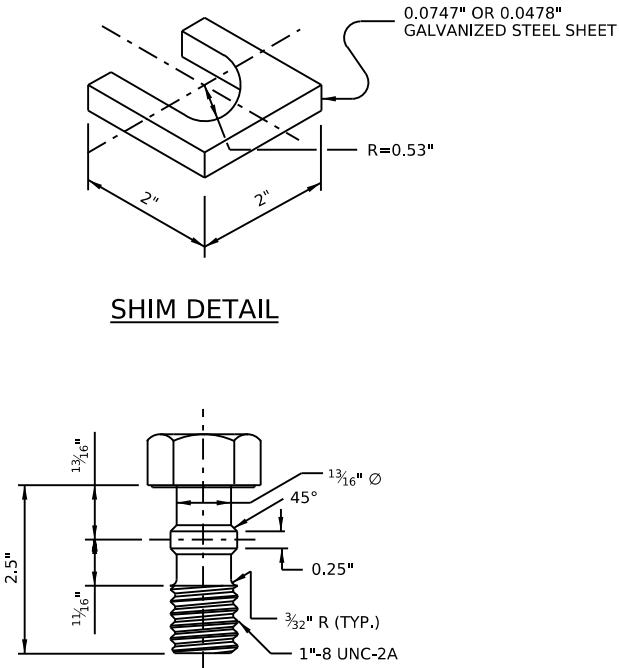
POST-MOUNTED SIGNS, TYPE A

POST BASE AND HINGE DETAILS



BREAKAWAY COUPLING DETAIL

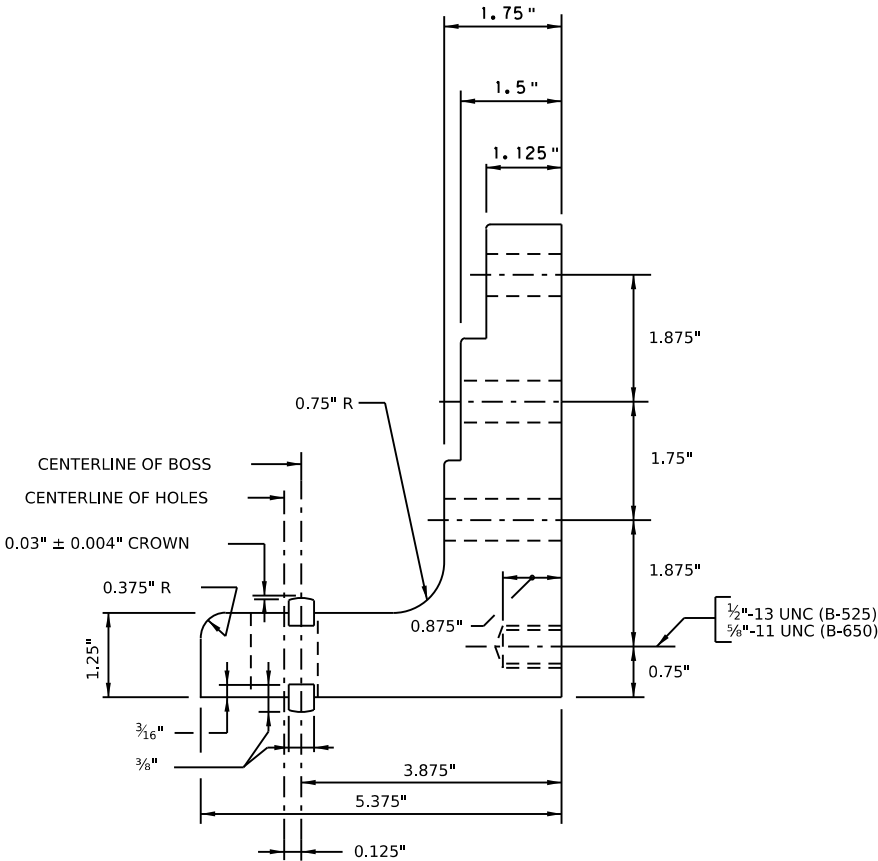
NOTE: DO NOT PLACE TORQUE ACROSS NECK PORTION OF COUPLING.



NOTE:

1. B-525 BRACKETS USED ON W6 & W8 POSTS. B-650 BRACKETS USED ON W10, W14, & W18 POSTS.

BRACKET DETAIL



COMMONWEALTH OF PENNSYLVANIA
DEPARTMENT OF TRANSPORTATION
BUREAU OF OPERATIONS

POST-MOUNTED SIGNS,
TYPE A

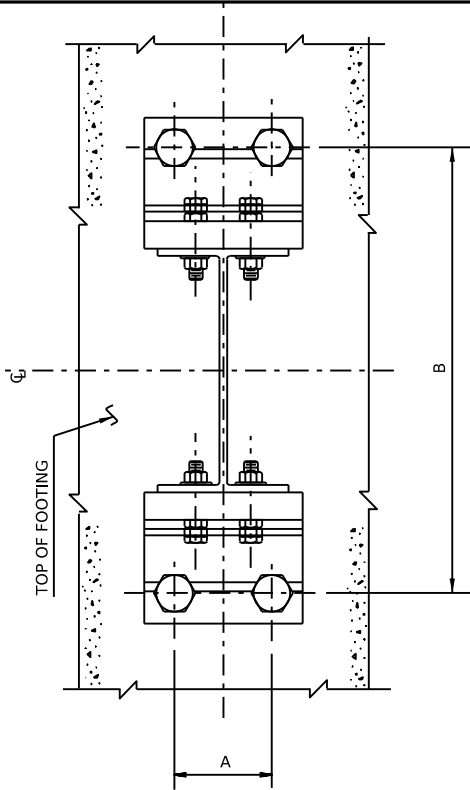
BREAKAWAY COUPLING AND
BRACKET DETAILS

RECOMMENDED
MANAGER, TRAFFIC ENGINEERING AND
PERMITS SECTION

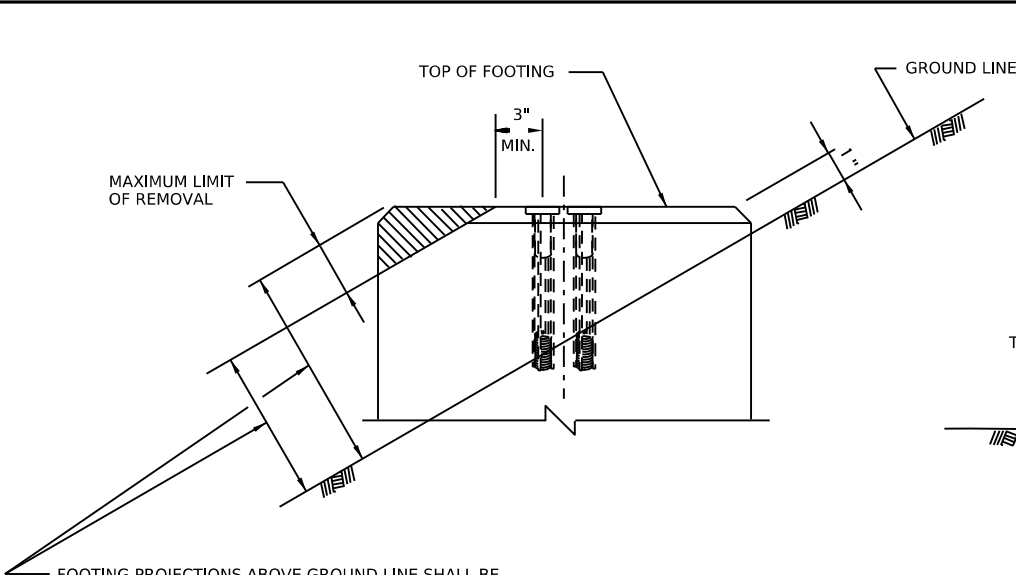
RECOMMENDED
CHIEF, HIGHWAY SAFETY AND TRAFFIC
OPERATIONS DIVISION

SHEET 6 OF 7

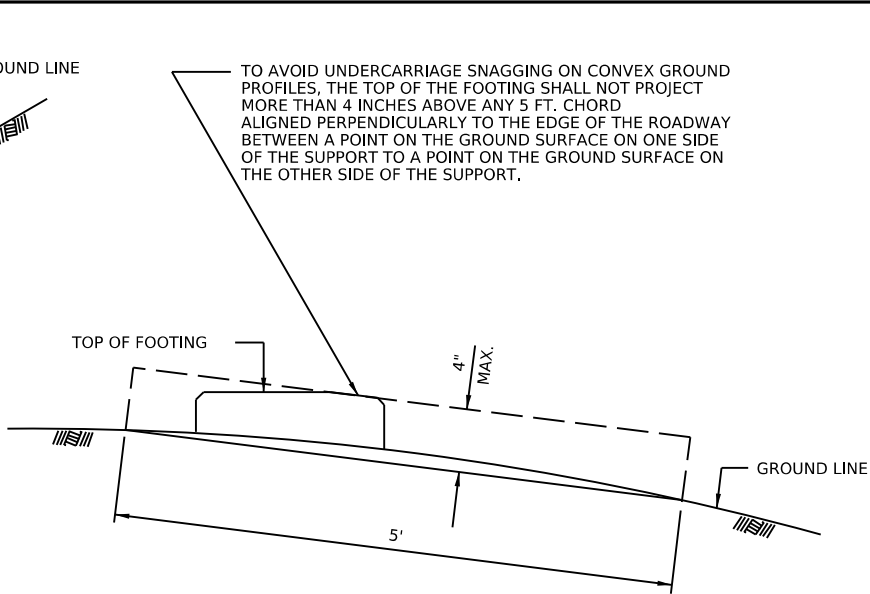
TC-8702A



PLAN



FOOTING PROJECTIONS ABOVE GROUND LINE SHALL BE MINIMIZED. THE MAXIMUM PERMISSIBLE FOOTING PROJECTION SHALL BE 4" ON THE LOWER SLOPE SIDE. WHERE NECESSARY, THE SHADED AREA OF THE FOOTING SHALL BE REMOVED AND REINFORCEMENT SHALL BE BENT TO FIT.



POST SIZE	L ₁ * (FEET)	DEPTH K ₁ (FEET)	REINF. STEEL F ₁	REINF. STEEL F ₂
W6	2.5	7.50	8-#4	8-#7
W8	2.5	8.50	9-#4	8-#7
W10	3.0	9.00	10-#4	10-#7
W14	3.0	9.00	10-#4	10-#7
W18	3.5	9.50	10-#4	12-#7

* DIAMETER IF CIRCULAR OR MINIMUM SIDE IF SQUARE OR RECTANGULAR

FOOTING SELECTION TABLE

SOIL PROPERTIES:

FOUNDATION DESIGN IS BASED ON BROMS' METHOD USING THE FOLLOWING SOIL PROPERTIES:

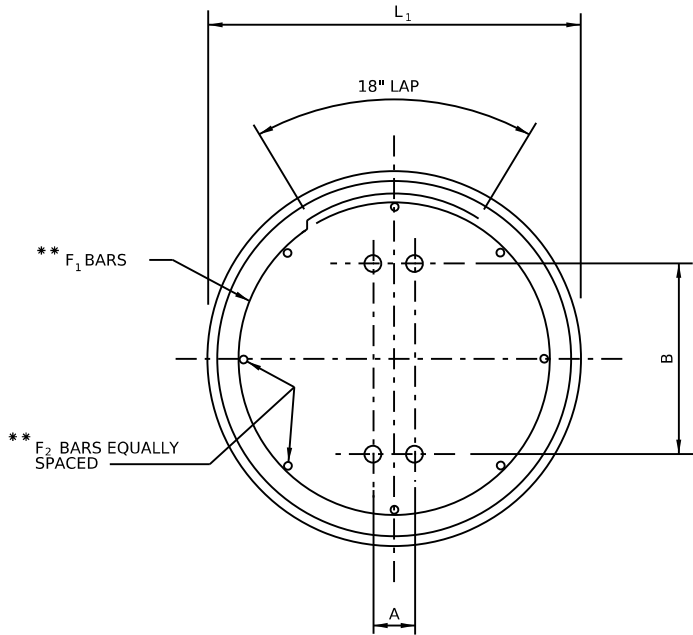
TYPE OF SOIL = LOOSE-MEDIUM SAND
UNIT WEIGHT OF SOIL (γ) = 120 PCF
ANGLE OF INTERNAL FRICTION (ϕ) = 25°.

NOTES:

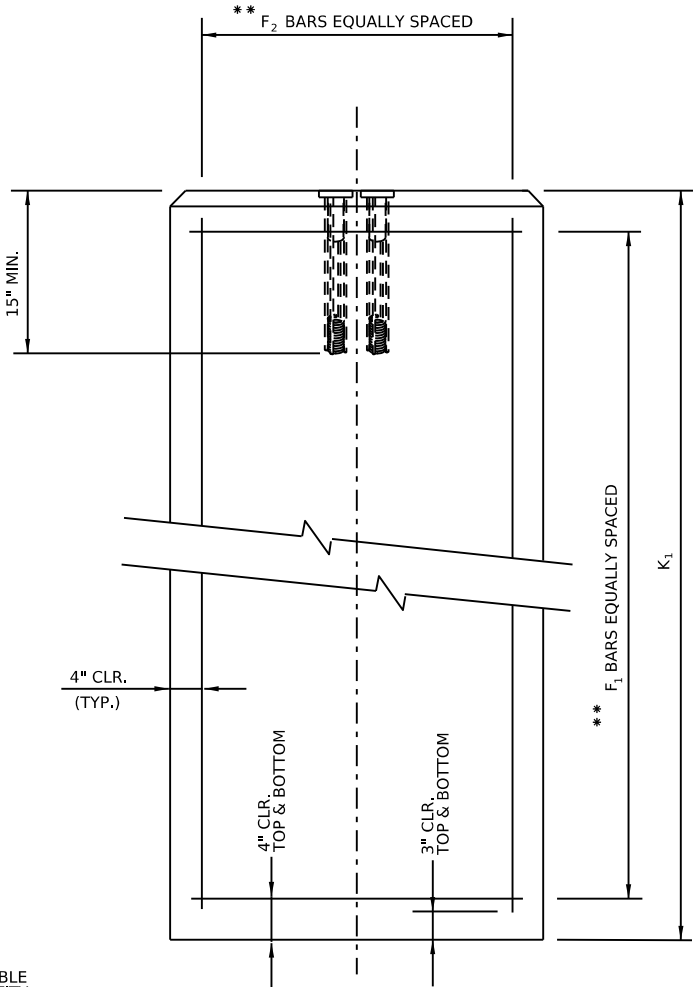
- ENTER FOOTING SELECTION TABLE WITH REQUIRED POST SIZE AND FIND REQUIRED FOOTING VALUES AS SHOWN IN DETAILS.
- THE ANCHOR SHALL BE 304 STAINLESS STEEL WITH 1045 STEEL ROD AND 1008 COIL.
- FORM THE TOP 1 FT. OF THE FOOTING.
- USE CLASS "A" CEMENT CONCRETE IN ALL FOOTINGS.
- ACTUAL DIMENSIONS "A" & "B" SHOULD BE OBTAINED FROM THE MANUFACTURER OR MEASURED FROM THE ASSEMBLED BRACKETS PRIOR TO PLACEMENT OF ANCHORS. APPROXIMATE DIMENSIONS ARE AS FOLLOWS:

A (LATERAL SPACING OF ANCHORS)
3" FOR B-525 USED ON W6 & W8 POSTS.
4" FOR B-650 USED ON W10, W14 & W18 POSTS.

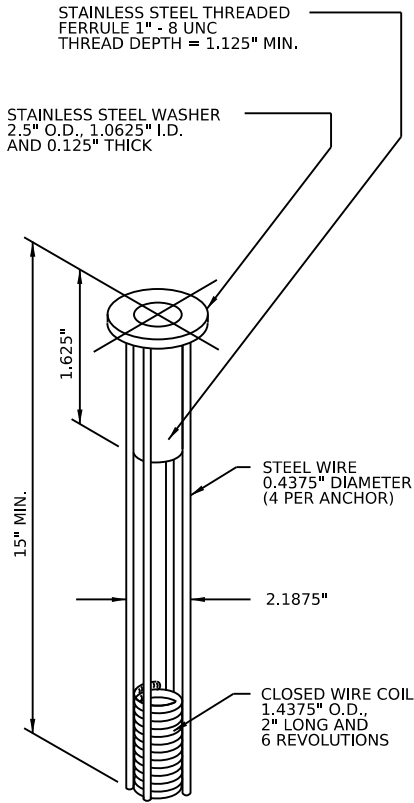
B (LONGITUDINAL SPACING OF ANCHORS)
DEPTH OF POST SECTION PLUS 8".
- TO ENSURE PROPER SPACING AND ALIGNMENT OF ANCHORS, IT IS RECOMMENDED THAT ALL ANCHORS BE HELD IN PLACE BY A RIGID MACHINED TEMPLATE WHILE THE CONCRETE IS PLACED AND CURED.



TOP VIEW



SIDE VIEW



ANCHOR
(SEE NOTE 2)

COMMONWEALTH OF PENNSYLVANIA
DEPARTMENT OF TRANSPORTATION
BUREAU OF OPERATIONS

POST-MOUNTED SIGNS,
TYPE A

FOOTING DETAILS

RECOMMENDED _____
MANAGER, TRAFFIC ENGINEERING AND PERMITS SECTION

RECOMMENDED _____
CHIEF, HIGHWAY SAFETY AND TRAFFIC OPERATIONS DIVISION

SHEET 7 OF 7
TC-8702A