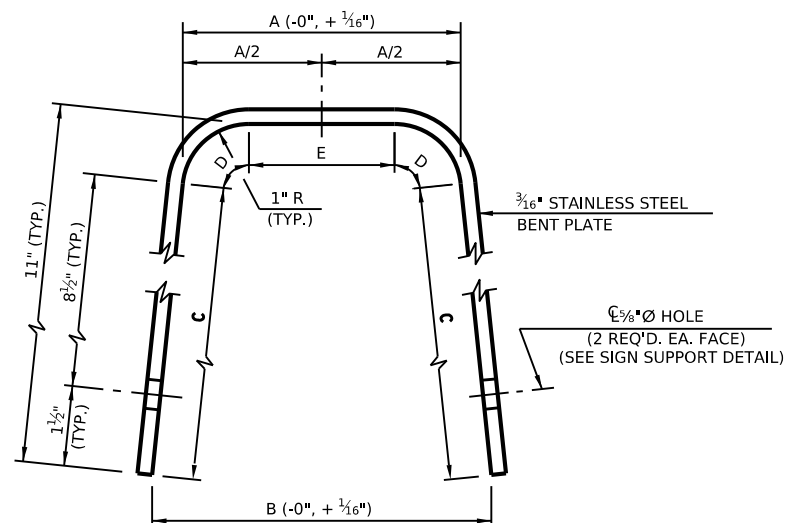


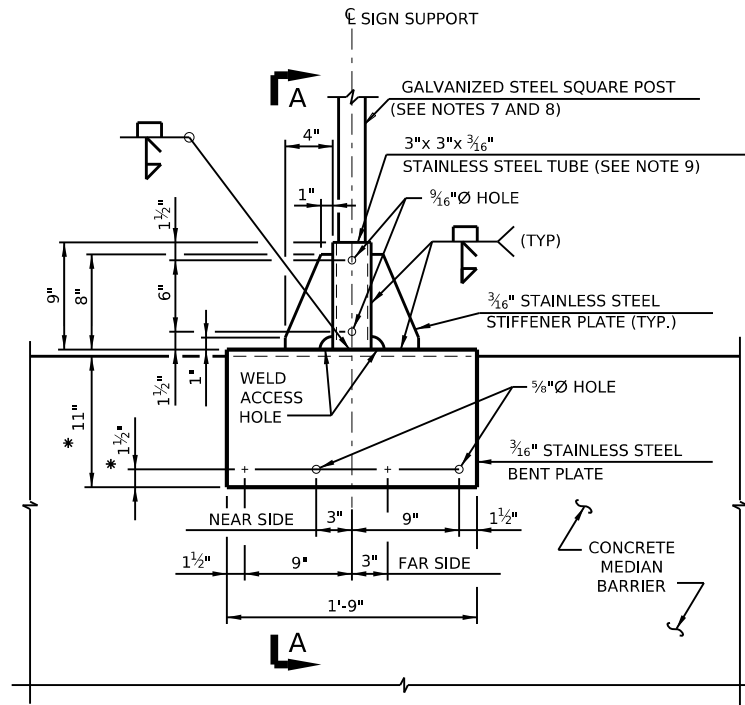
### ELEVATION VIEW

SIGN AREA  $\leq$  12 SF

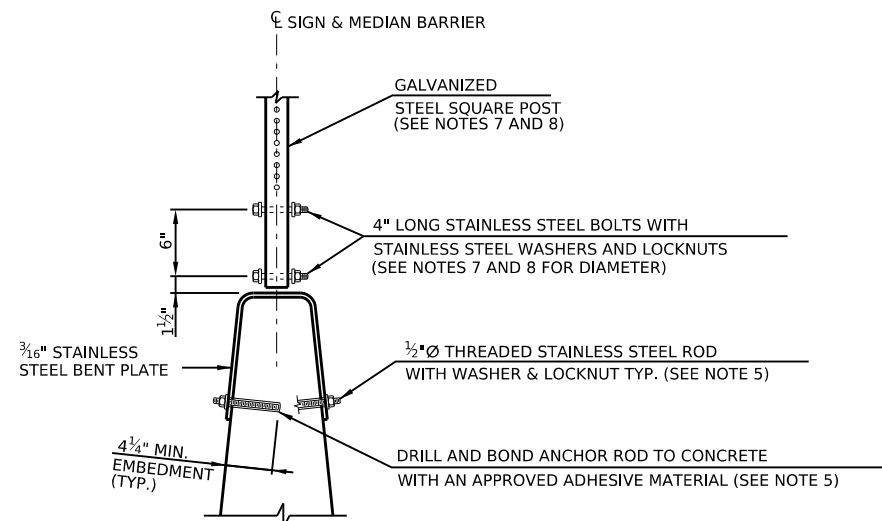


## PLATE DETAIL

SEE PLATE DIMENSIONS  
TABLE ON SHEET 3



### SIGN SUPPORT DETAIL



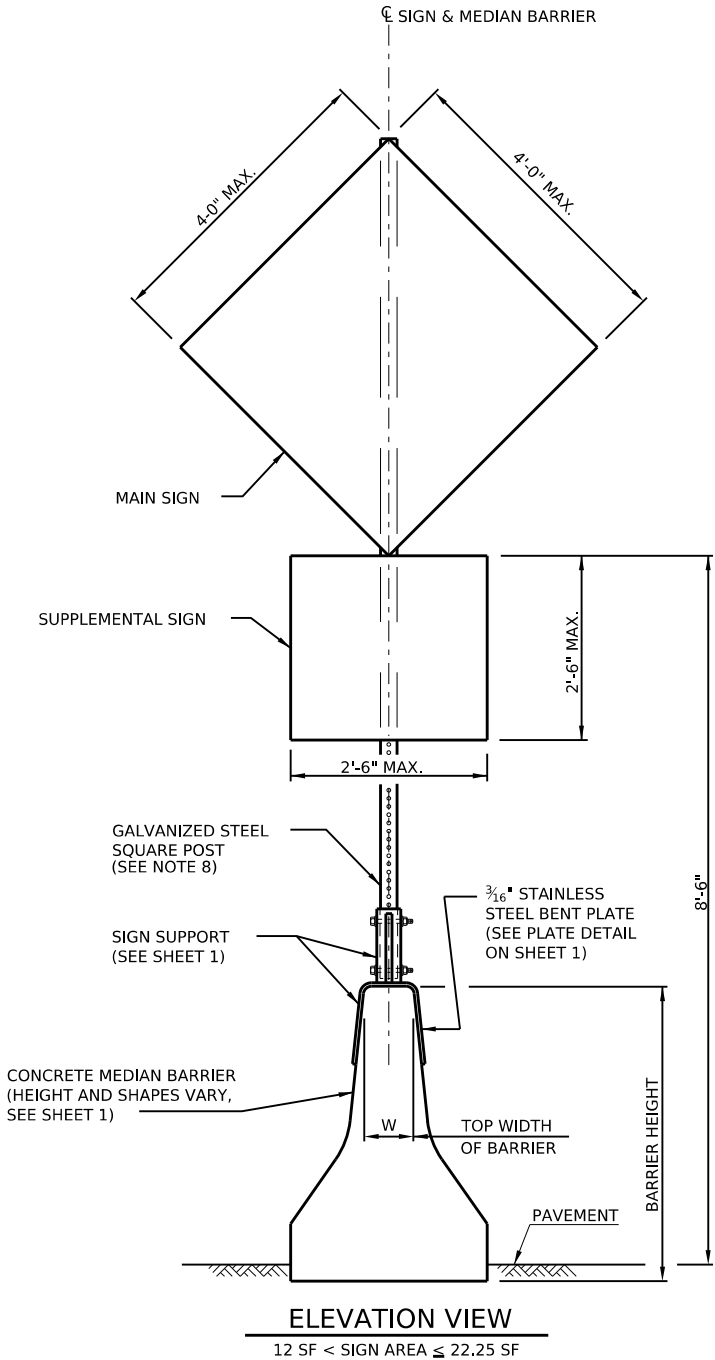
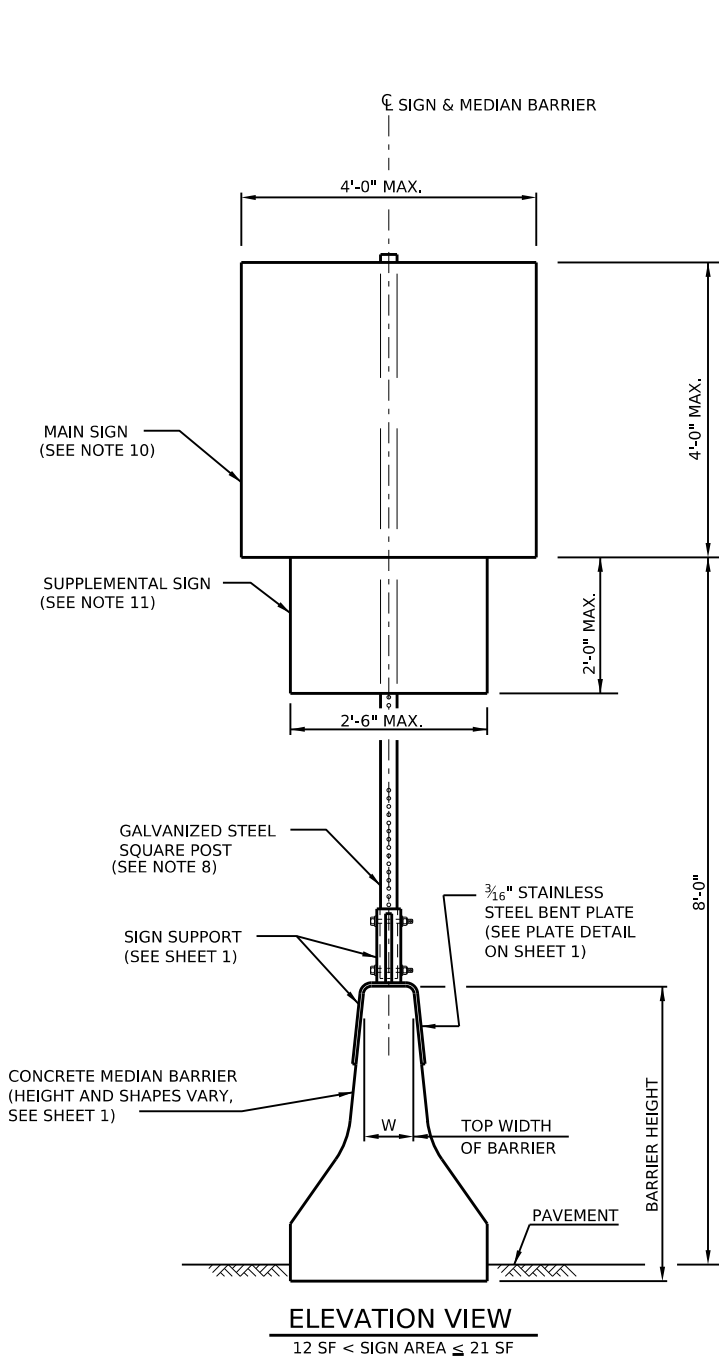
SECTION A-A

SECTION SHOWN WITHOUT STEEL TUBE OR STIFFENER PLATES, FOR CLARITY.

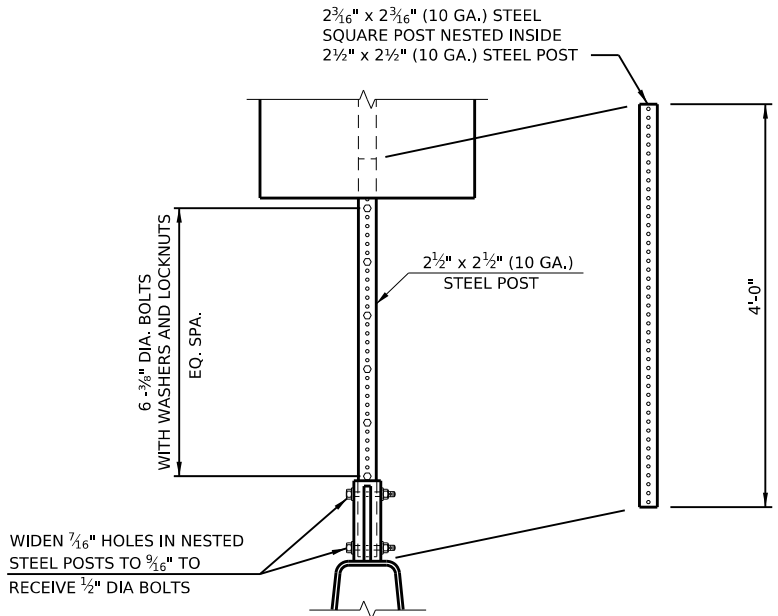
- GENERAL NOTES:

1. INSTALL SIGN SUPPORTS NEAR THE CENTER OF PRECAST BARRIER SECTIONS WITHIN THE MIDDLE 6 FEET OF THE BARRIER SECTION. INSTALL SIGN SUPPORTS ON CAST-IN-PLACE BARRIERS HALFWAY BETWEEN ADJACENT CONTRACTION JOINTS OR HALFWAY BETWEEN A CONSTRUCTION JOINT AND AN EXPANSION JOINT.
2. DO NOT INSTALL SIGNS LARGER OR AT AN ELEVATION HIGHER THAN INDICATED. DO NOT PLACE SIGNS ON SLOPING TRANSITION SECTIONS BETWEEN BARRIERS OF DIFFERENT HEIGHT.
3. DO NOT INSTALL SIGNS THAT EXTEND CLOSER THAN 6 FEET TO THE TRAVELED WAY.
4. FURNISH WELDS IN ACCORDANCE WITH APPLICABLE REVISION OF AWS D1.6 WELDING CODE OF STAINLESS STEEL.
5. MATERIALS:
  - STAINLESS STEEL:
    - PLATE: ASTM A240, TYPE 304, 2B FINISH (Fy=30 KSI MIN.)
    - TUBING: ASTM A554, TYPE 304, (Fy=30 KSI MIN.)
    - BOLTS: ASTM F593, TYPE 304, (Fy=65 KSI)
    - NUTS: ASTM F594
    - WASHERS: TYPE 304
  - \*ANCHOR RODS: ASTM F593, TYPE 304, (Fy=65 KSI)
  - \*ADHESIVE ANCHORING SYSTEM:
    - \*MINIMUM ALLOWABLE TENSILE STRENGTH OF 4,000 lb.
    - INSTALL IN ACCORDANCE WITH MANUFACTURER'S PROCEDURES.
  - GALVANIZED STEEL SQUARE POST:
    - COLD ROLLED STEEL WITH A MINIMUM YIELD STRENGTH OF 50 KSI
    - MEETING THE CHEMICAL AND MECHANICAL REQUIREMENT OF ASTM A653.
6. ALL DIMENSIONS OF BARRIER IN CHART ARE TO BE FIELD VERIFIED PRIOR TO FABRICATION.
7. FOR SIGNS WITH A TOTAL SIGN AREA LESS THAN OR EQUAL TO 12 SQUARE FEET USE A 2½" x 2½" (10 GA.) GALVANIZED STEEL SQUARE POST. FASTEN THE POST TO THE SIGN SUPPORT USING TWO (2) ¾" DIAMETER STAINLESS STEEL BOLTS, WASHERS AND LOCKNUTS.
8. FOR SIGNS WITH A TOTAL SIGN AREA GREATER THAN 12 SQUARE FEET BUT LESS THAN OR EQUAL TO 22.25 SQUARE FEET USE 2½" x 2½" (10 GA.) GALVANIZED STEEL SQUARE POST NESTED WITH 4'-0" LONG, 2⅜" x 2⅜" (10 GA.) GALVANIZED STEEL SQUARE POST. FASTEN NESTED POSTS TOGETHER USING NUMBER OF BOLTS INDICATED ON SHEET 2. FASTEN THE POST TO THE SIGN SUPPORT USING TWO (2) ½" DIAMETER STAINLESS STEEL BOLTS WITH WASHERS AND LOCKNUTS. DO NOT USE SIGN AREA GREATER THAN 21 SQUARE FEET ON 34" HEIGHT OR LESS BARRIER.
9. ROTATION OF THE SIGN SUPPORT TUBE BY 45 DEGREES IS PERMITTED ONLY FOR SIGN CONFIGURATIONS WITH LESS THAN OR EQUAL TO 12 SQUARE FEET.
10. MAIN SIGN MAY BE IN A DIAMOND ORIENTATION.
11. OBJECT MARKERS (OM1-3) USED AS SUPPLEMENTAL SIGNS MAY ALSO BE IN A DIAMOND ORIENTATION.

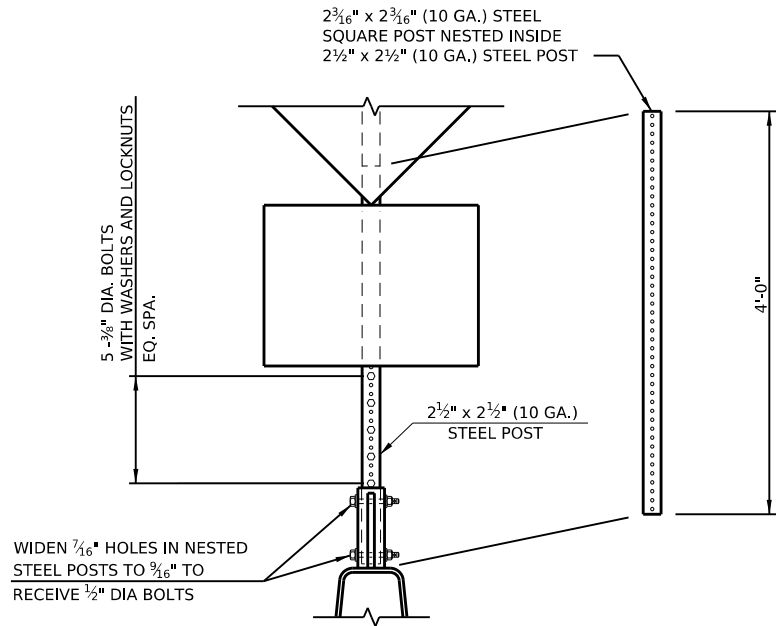
<p align="center"><b>COMMONWEALTH OF PENNSYLVANIA</b>  <b>DEPARTMENT OF TRANSPORTATION</b>          BUREAU OF OPERATIONS</p>		
<p align="center"><b>MEDIAN BARRIER SUPPORT FOR SIGNS</b></p> <hr/> <p align="center"><b>SIGN AREA ≤ 12 SF</b></p>		
<b>RECOMMENDED</b> <u>XXX, XX, 2024</u>	<b>RECOMMENDED</b> <u>XXX, XX, 2024</u>	<b>SHEET 1 OF 3</b>
<b>MANAGER, TRAFFIC ENGINEERING AND PERMITS SECTION</b>	<b>CHIEF, HIGHWAY SAFETY AND TRAFFIC OPERATIONS DIVISION</b>	<b>TC-8702M</b>



NOTE:  
FOR NOTES, SEE SHEET 1.



32"-34" BARRIER HEIGHT  
12 SF < SIGN AREA ≤ 21 SF



48"-52" BARRIER HEIGHT  
12 SF < SIGN AREA ≤ 22.25 SF

NESTED STEEL SQUARE POST DETAILS

COMMONWEALTH OF PENNSYLVANIA  
DEPARTMENT OF TRANSPORTATION  
BUREAU OF OPERATIONS

MEDIAN BARRIER SUPPORT  
FOR SIGNS

12 SF < SIGN AREA ≤ 22.25 SF

RECOMMENDED XXX. XX, 2024

RECOMMENDED XXX. XX, 2024

SHEET 2 OF 3

MANAGER, TRAFFIC ENGINEERING AND PERMITS SECTION

CHIEF, HIGHWAY SAFETY AND TRAFFIC OPERATIONS DIVISION

TC-8702M

PLATE DIMENSIONS (SEE NOTE 6)											
STANDARD DRAWING NO.	DRAWING DATES	DESCRIPTION	SHAPE	HEIGHT ABOVE PAVEMENT SURFACE	W (BARRIER TOP WIDTH)	A=W+¼	B	C	D	E	PLATE SIZE
MB-3	11/20/1968 AND 12/19/1969	CONCRETE MEDIAN BARRIER	JERSEY SHAPE	32"	6"	6¼"	7¾"	10"	1⅜"	4¾"	29⅛" x 21"
RC-57	12/1/1971 TO 3/25/1994										
RC-57M	9/25/1995 TO 4/30/2003	CONCRETE MEDIAN BARRIER	F-SHAPE	32"	9"	9¼"	10¾"	10"	1⅜"	7¾"	32⅜" x 21"
RC-57M	4/15/2004	CONCRETE MEDIAN BARRIER	F-SHAPE	32"	9½"	9¾"	11¼"	10"	1⅜"	8¼"	32⅞" x 21"
RC-57M	3/30/2006 TO 9/1/2023	CONCRETE MEDIAN BARRIER	F-SHAPE	32"	9"	9¼"	10¾"	10"	1⅜"	7¾"	32⅜" x 21"
RC-57M	11/30/2021 AND 9/1/2023	CONCRETE MEDIAN BARRIER	F-SHAPE	42"	6¼"	6½"	8"	10"	1⅜"	5"	29⅜" x 21"
RC-57M	11/30/2021 AND 9/1/2023	CONCRETE MEDIAN BARRIER	SINGLE SLOPE	42"	8"	8¼"	9¾"	10"	1⅜"	6¾"	31⅜" x 21"
RC-57M	11/30/2021 AND 9/1/2023	CONCRETE MEDIAN BARRIER	F-SHAPE	50"	5"	5¼"	7"	10"	1⅜"	3¾"	28⅛" x 21"
RC-57M	3/29/1985	CONCRETE MEDIAN BARRIER (CONCRETE GLARE SCREEN)	JERSEY SHAPE	50"	4" MIN	4¼"	6"	10"	1⅜"	2¾"	27⅛" x 21"
RC-59M	6/30/1990 TO 3/25/1994	CONCRETE GLARE SCREEN			6" MAX	6¼"	7¾"	10"	1⅜"	4¾"	29⅛" x 21"
RC-59M	9/25/1995 TO 4/30/2003	CONCRETE GLARE SCREEN	F-SHAPE	50"	5"	5¼"	7"	10"	1⅜"	3¾"	28⅛" x 21"
RC-59M	4/15/2004	CONCRETE GLARE SCREEN	F-SHAPE	50"	5½"	5¾"	7½"	10"	1⅜"	4¼"	28⅝" x 21"
RC-59M	3/30/2006 AND 6/1/2010	CONCRETE GLARE SCREEN	F-SHAPE	50"	5"	5¼"	7"	10"	1⅜"	3¾"	28⅜" x 21"

NOTE:  
FOR NOTES, SEE SHEET 1.

COMMONWEALTH OF PENNSYLVANIA  
DEPARTMENT OF TRANSPORTATION  
BUREAU OF OPERATIONS

MEDIAN BARRIER SUPPORT  
FOR SIGNS

PLATE DIMENSIONS