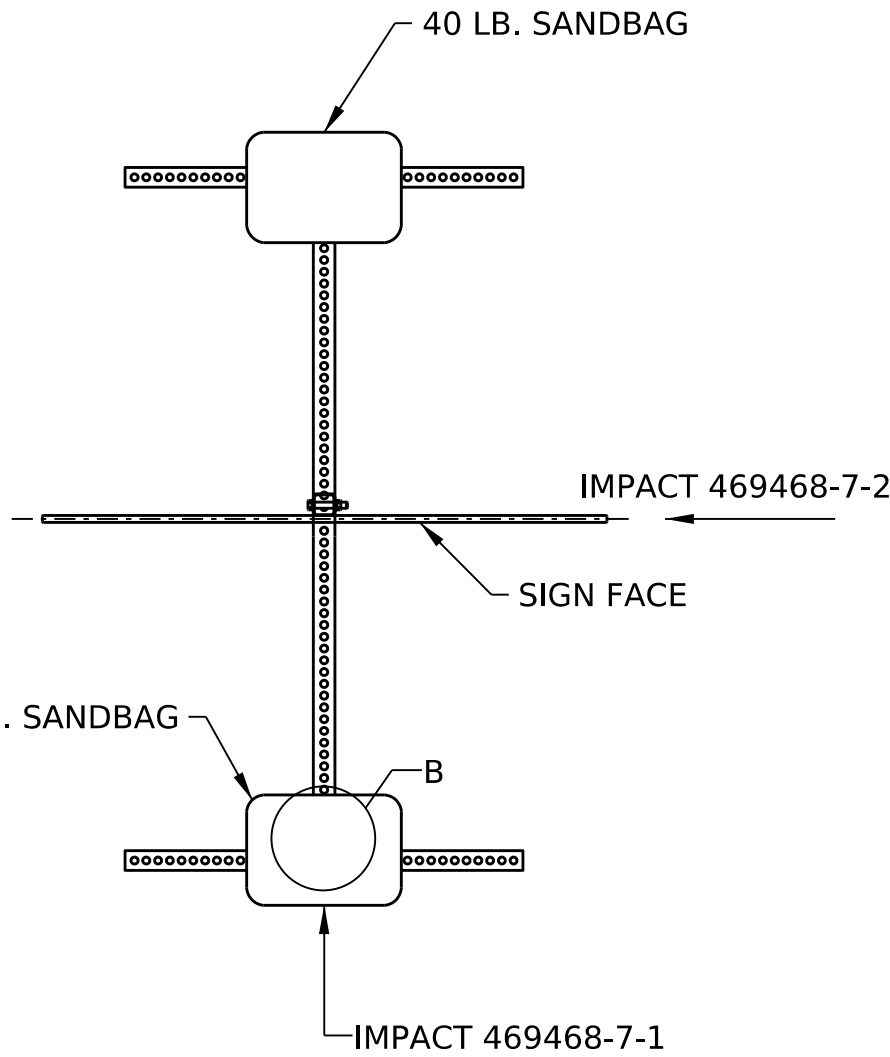
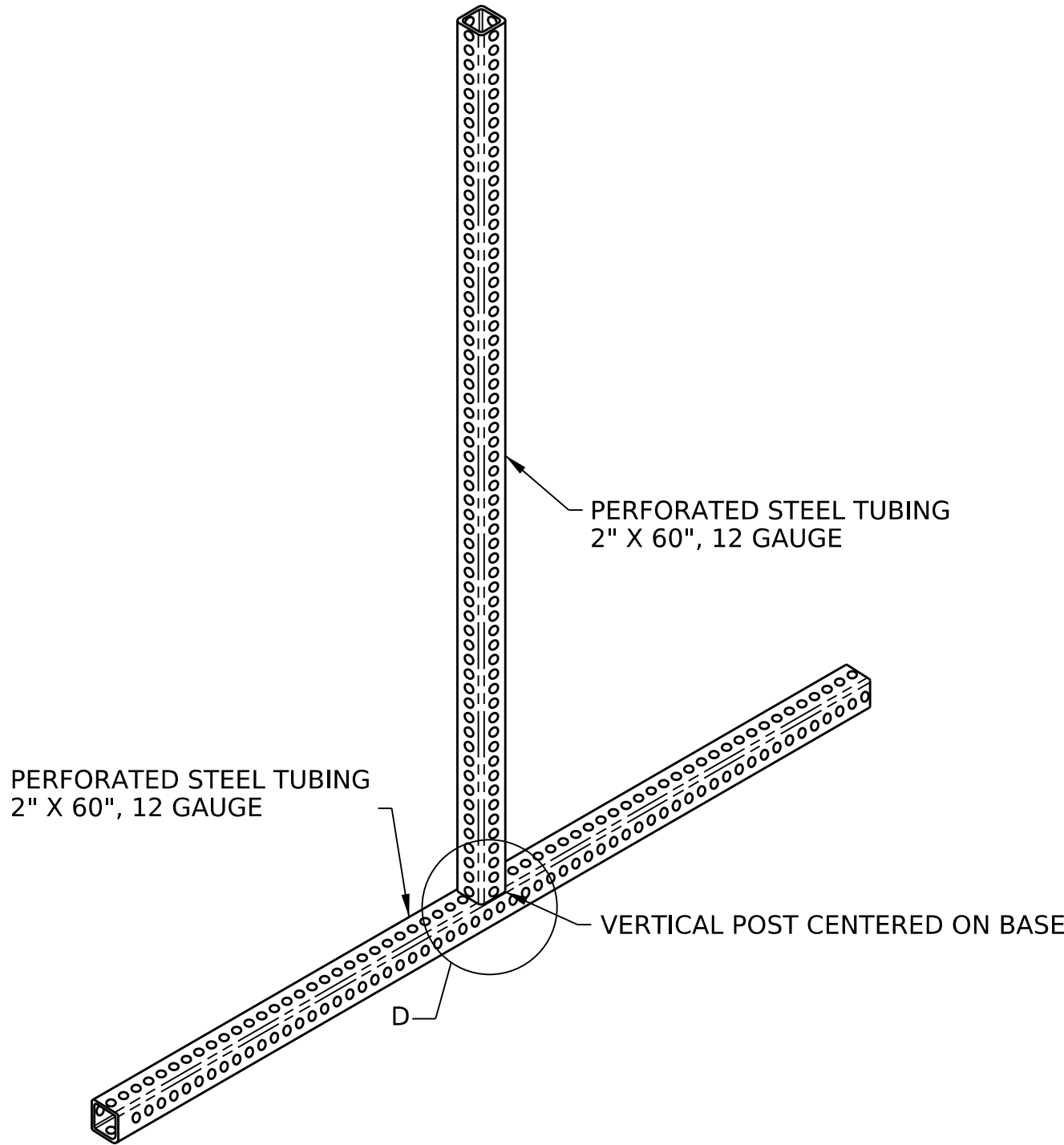


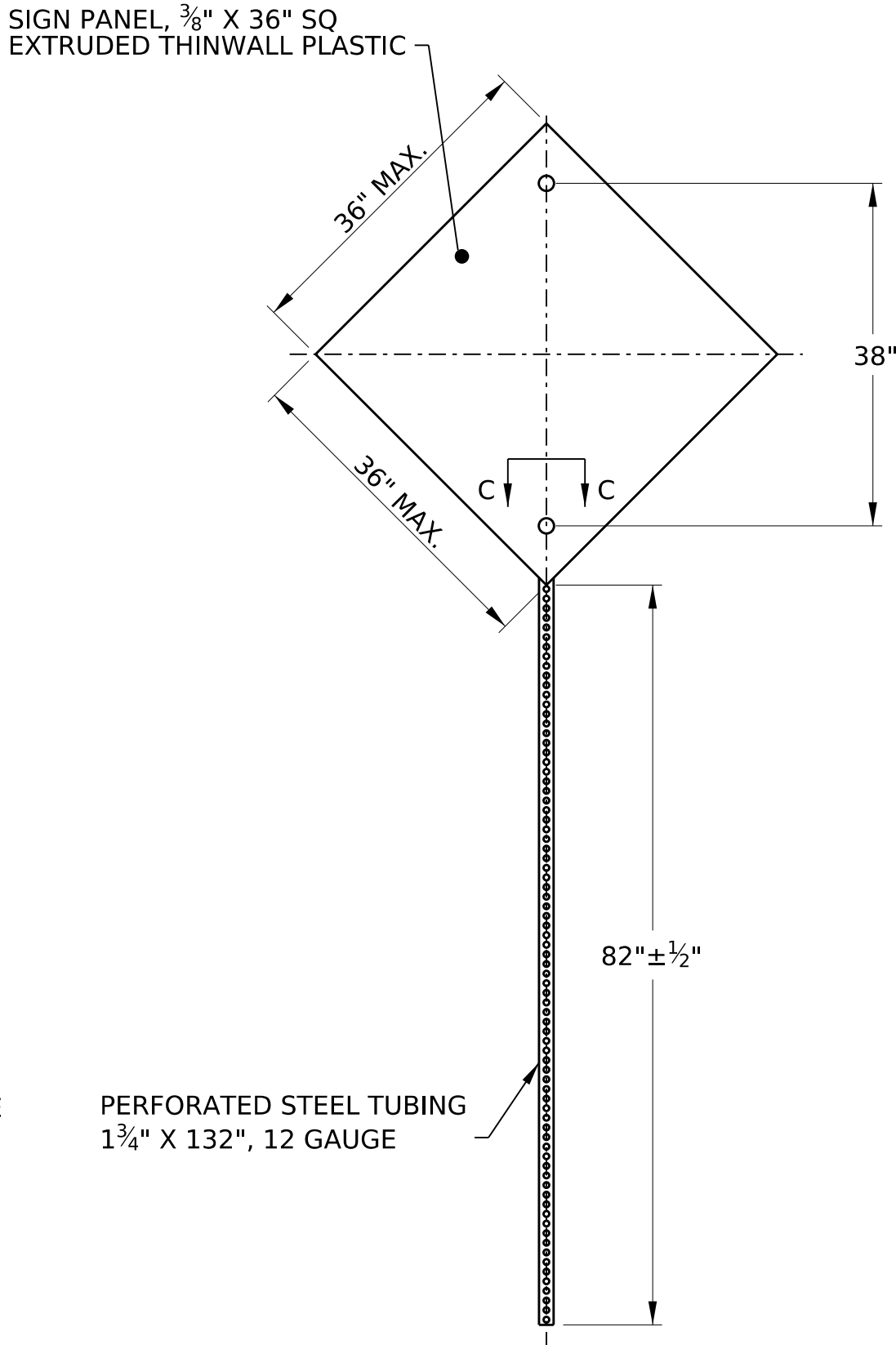
ELEVATION VIEW
(SEE NOTE 8)



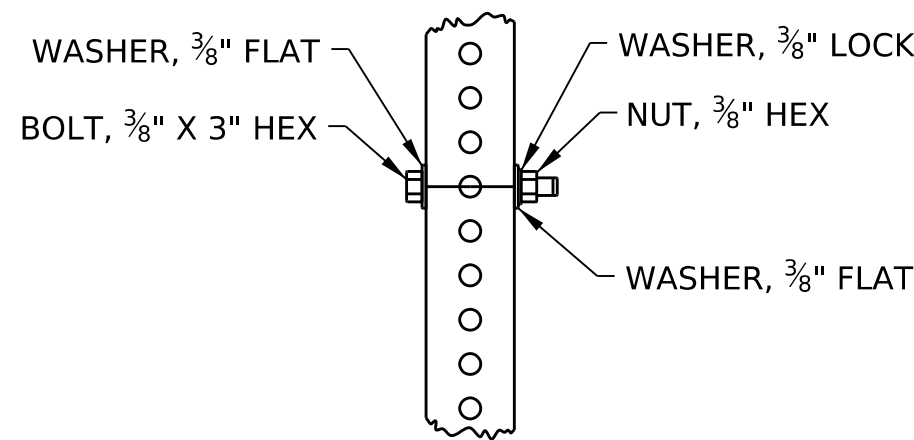
PLAN VIEW
(SEE NOTE 6)



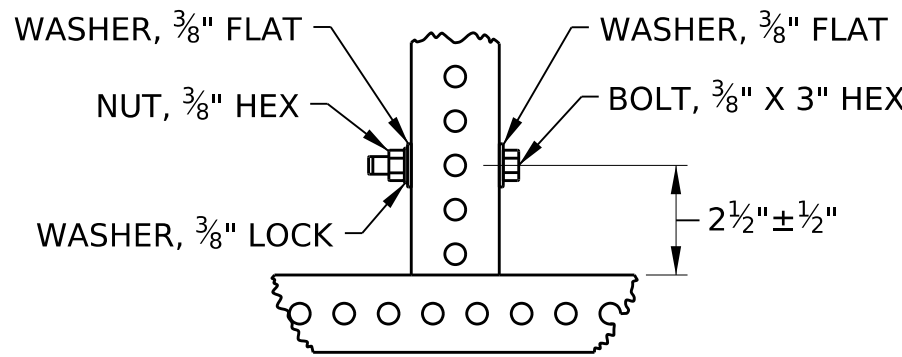
CENTER SECTION



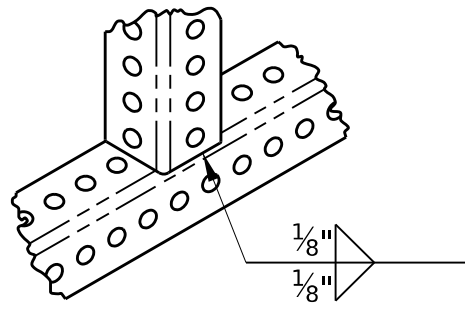
SIGN ASSEMBLY
SCALE 1 : 20
(SEE NOTE 1 & 2)



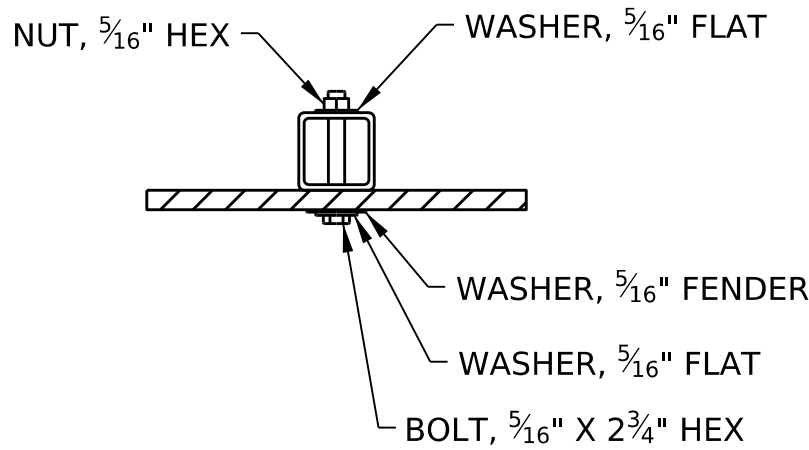
DETAIL A
SCALE 1 : 5
(SEE NOTE 3 & 9)



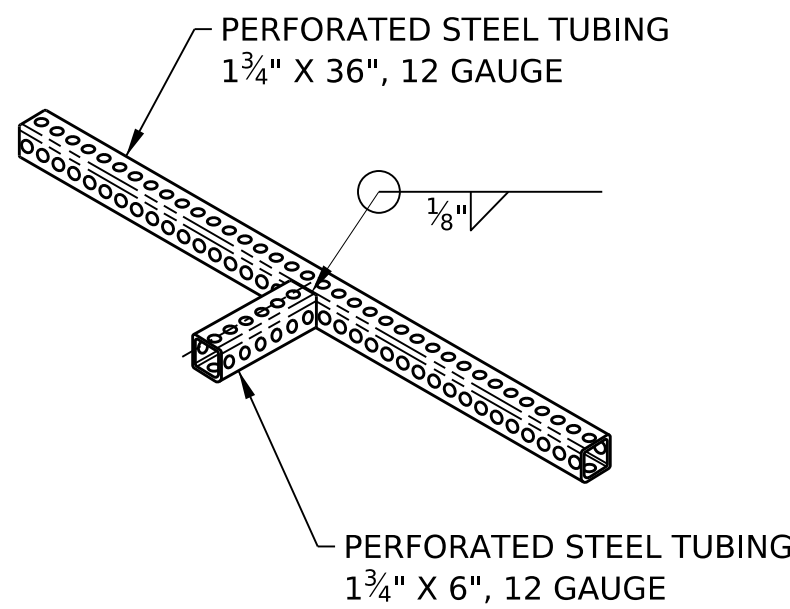
DETAIL B
SCALE 1 : 5
TYP BOTH SIDES
SAND BAGS NOT SHOWN
IN DETAIL B FOR CLARITY.
(SEE NOTE 4 & 9)



DETAIL D
SCALE 1 : 5



SECTION C-C
SCALE 1 : 5
TYP 2 PLACES
(SEE NOTE 5 & 9)



LEG ASSEMBLY
(2 NEEDED PER SIGN)

**COMMONWEALTH OF PENNSYLVANIA
DEPARTMENT OF TRANSPORTATION
BUREAU OF OPERATIONS**

**TEMPORARY PORTABLE
SIGN POST**

"H" BASE

RECOMMENDED _____
MANAGER, TRAFFIC ENGINEERING AND
PERMITS SECTION

RECOMMENDED _____
CHIEF, HIGHWAY SAFETY AND TRAFFIC
OPERATIONS DIVISION

SHEET 1 OF 1
TC-8717

NOTES:

1. PROVIDE SIGN MATERIALS MEETING THE REQUIREMENTS OF PUBLICATION 408, SECTION 1103.04, EXCEPT SIGN SUBSTRATE MUST BE 3/8" EXTRUDED THINWALL PLASTIC.
2. DIAMOND, RECTANGULAR, OCTAGONAL AND TRIANGULAR SIGNS ARE PERMITTED. THE MAXIMUM SIGN AREA SHALL NOT EXCEED 9 SQ. FT.
3. SIGN POST, 1 3/4" X 132" STEEL TUBING SLIDES INTO VERTICAL CENTER BASE STUB, 2" X 60" STEEL TUBING AND IS FASTENED WITH A BOLT, WASHERS, AND NUT (SEE DETAIL A).
4. LEG ASSEMBLY, 1 3/4" X 6" STEEL TUBING SLIDES INTO EACH END OF CENTER SECTION BASE, 2" X 60" STEEL TUBING AND IS FASTENED WITH BOLTS, WASHERS, AND NUTS (SEE DETAIL B).
5. SIGN PANEL IS PLACED ON THE VERTICAL SIGN POST WITH TOP EDGE ALIGNED WITH POST TOP END AND IS FASTENED WITH BOLTS, WASHERS, AND NUTS (SEE SECTION C-C).
6. SANDBAG BALLAST SHALL BE PLACED ON THE BASE OF EACH LEG AS SHOWN TO PROVIDE STABILITY.
7. SIGNS SHALL REMAIN IN THE VERTICAL POSITION WHEN LOCATED WITHIN THE HIGHWAY RIGHT-OF-WAY.
8. TYPE B LIGHTS ARE ONLY REQUIRED IN CONJUNCTION WITH TEMPORARY R1-1, R1-2, W21-19 SIGNS, OTHERWISE TYPE B LIGHTS ARE OPTIONAL. ONLY ONE TYPE B LIGHT IS ALLOWED TO BE PLACED ON A SIGN.

THE BOTTOM OF THE TYPE B LIGHT HOUSING SHALL BE WITHIN 12" OF SIGN'S UPPER EDGE AND IT SHALL BE ATTACHED 12" HORIZONTALLY FROM THE TOP/CENTER OF THE SIGN AND ON THE SIDE WHICH IS NEAREST TRAFFIC.

IF THE TYPE B LIGHT IS NON-SOLAR AND HAS A SEPARATE BATTERY CASE, THE BATTERY CASE MUST BE PLACED ON THE GROUND OR ATTACHED TO THE SKID BASE.
9. ALL BOLTS, NUTS, AND WASHERS ARE GRADE 5 ZINC-PLATED.
10. MASH-16 TEST LEVEL 3 CRASH TESTED AND APPROVED.