

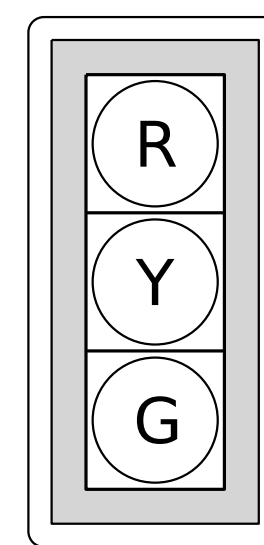
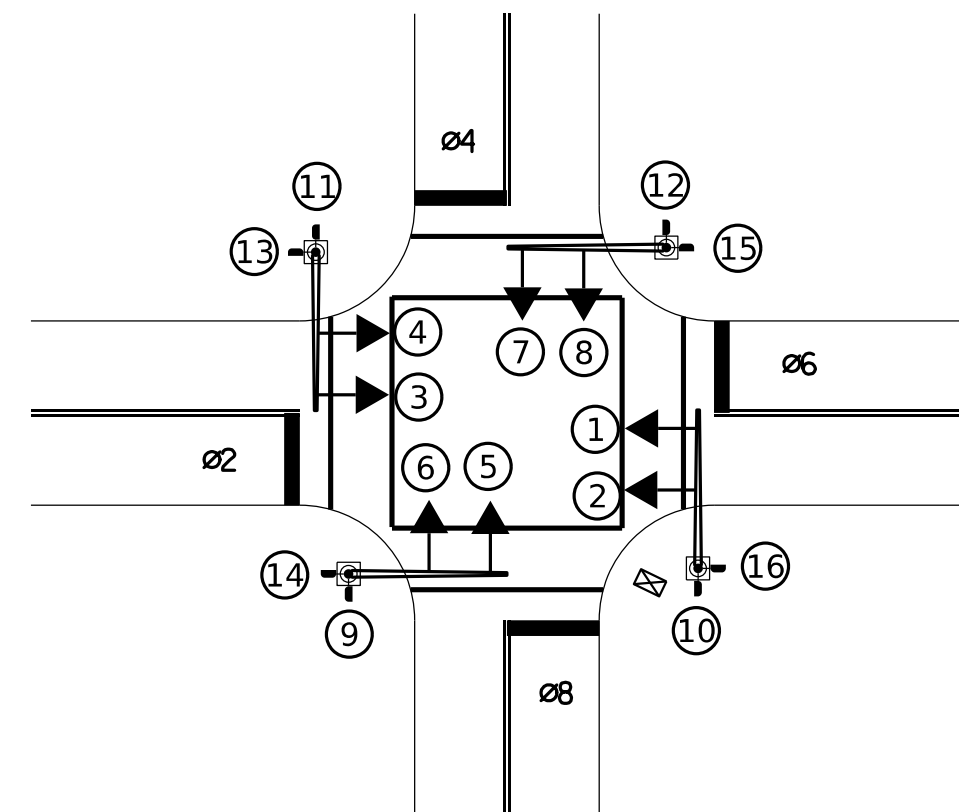
### TWO PHASE OPERATION (4 VEHICLE PHASES)

#### LEFT TURN PHASES

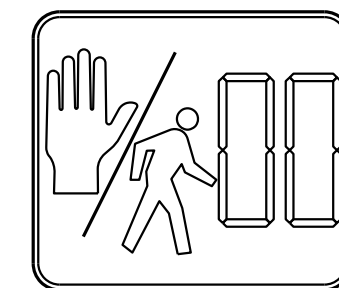
MAINLINE:  
(2) PERMISSIVE: 3-SECTION  
SIDE STREET:  
(2) PERMISSIVE: 3-SECTION

#### RIGHT TURN PHASES

MAINLINE:  
(2) PERMISSIVE: 3-SECTION  
SIDE STREET:  
(2) PERMISSIVE: 3-SECTION



1,2,3,4  
5,6,7,8



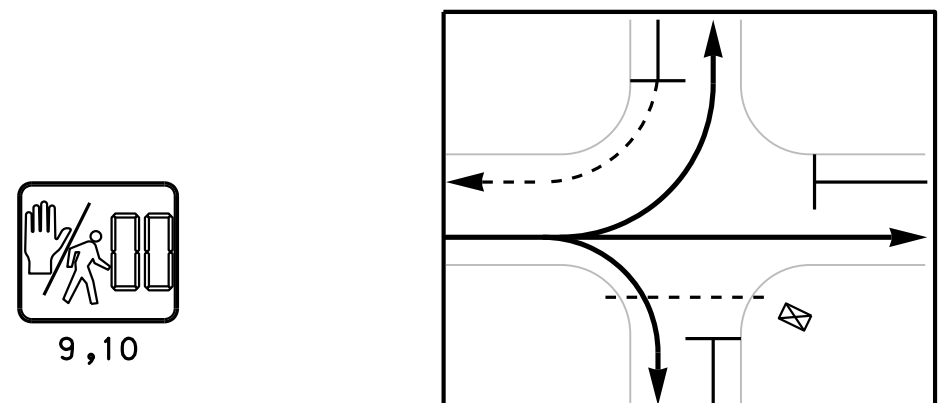
9,10,11,12  
13,14,15,16

BARRIER BARRIER BARRIER

RING A

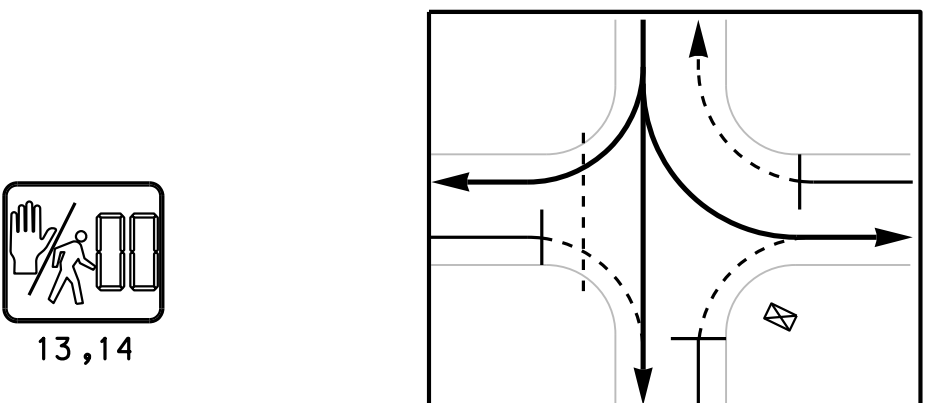
RING B

PHASE: 2



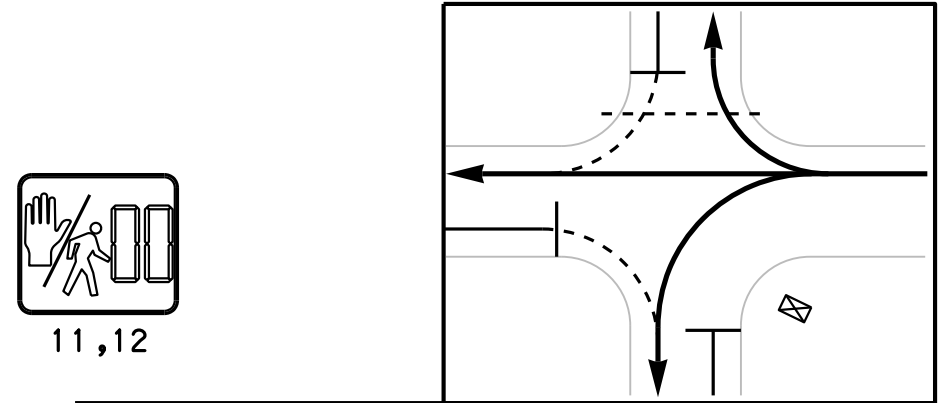
SIGNALS	Ø	LPI	GREEN ACTIVE	YELLOW CHANGE	RED CLEAR
1,2	Ø2	-	G	Y	R
9,10	Ø2P	-	W/FDW DW	DW	DW

PHASE: 4



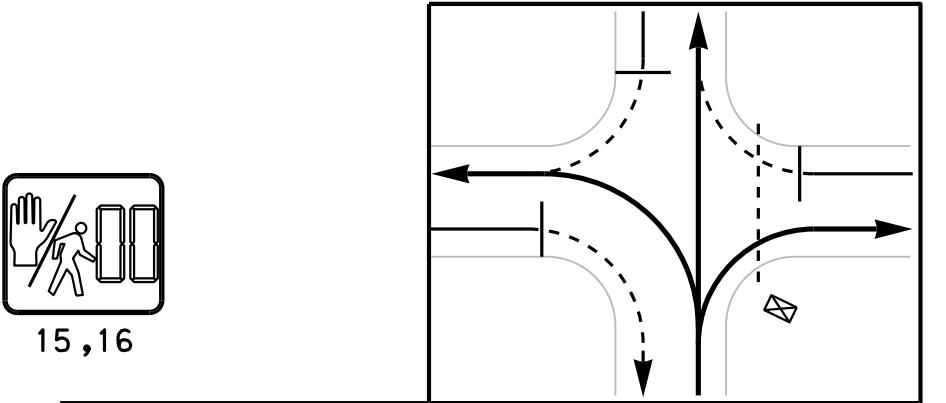
SIGNALS	Ø	LPI	GREEN ACTIVE	YELLOW CHANGE	RED CLEAR
5,6	Ø4	R	G	Y	R
13,14	Ø4P	W	W/FDW DW	DW	DW

PHASE: 6



SIGNALS	Ø	LPI	GREEN ACTIVE	YELLOW CHANGE	RED CLEAR
3,4	Ø6	-	G	Y	R
11,12	Ø6P	-	W/FDW DW	DW	DW

PHASE: 8



SIGNALS	Ø	LPI	GREEN ACTIVE	YELLOW CHANGE	RED CLEAR
7,8	Ø8	R	G	Y	R
15,16	Ø8P	W	W/FDW DW	DW	DW

PHASE TIMING

PHASES	1	2	3	4	5	6	7	8
MIN GREEN		12		5		12		5
ADVANCE WALK				3				3
WALK		7		7		7		7
DON'T WALK		15		15		15		15
VEH EXT		2		2		2		2
MAX 1		60		30		60		30
MAX 2		60		30		60		30
YELLOW		4		3		4		3
RED		3		3		3		3
MIN RECALL								
MAX RECALL								
SOFT RECALL		X				X		
PED RECALL								
REST IN WALK								
DUAL ENTRY				X				X
MEMORY		L		NL		L		NL

PREEMPTION

TYPE	EVP	EVP	EVP	EVP
CONFIRMATION SIGNAL	A	B	C	D
DWELL PHASES Ø	2	6	4	8
DWELL OVERLAPS				
PREEMPT MIN	10	10	10	10
PREEMPT MAX	60	60	60	60
EXIT PHASE Ø	2,6	2,6	4,8	4,8