

THIS SHEET IS FOR INFORMATION ONLY

IN THIS EXAMPLE, THE RIGHT TURNS ARE WIRED TO A PHASE INSTEAD OF AN OVERLAP.
THE MAIN DIFFERENCE DOING IT THIS WAY OCCURS DURING PREEMPTION.
THE RIGHT TURN OVERLAP WILL ALWAYS BE ON DURING PREEMPTION.
IF THE RIGHT TURN OVERLAP SHOULD NOT BE ON DURING PREEMPTION,
THEN IT HAS TO BE WIRED TO AN OVERLAP INSTEAD.

PROTECTED / PERMISSIVE

(4-SECTION FYA)
(RIGHT TURN OVERLAP WIRED TO PHASES)

THREE PHASE OPERATION

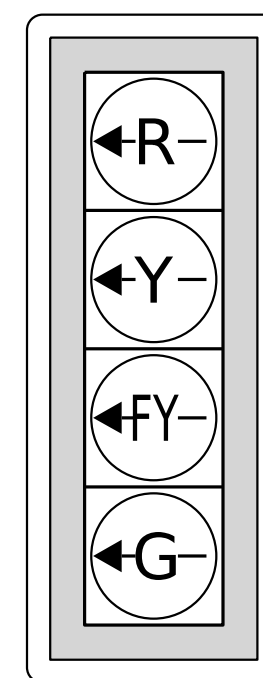
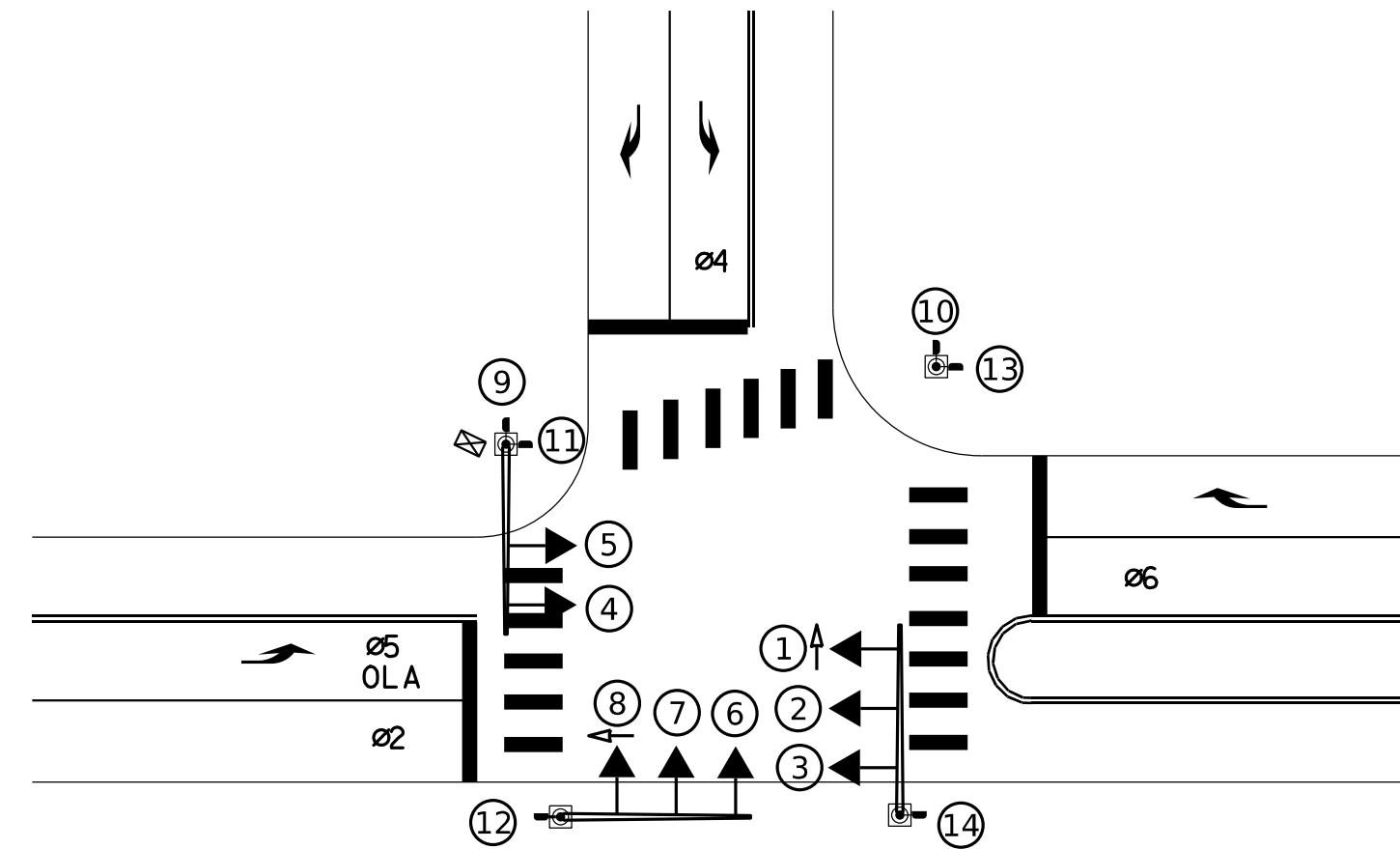
(4 VEHICLE PHASES)

LEFT TURN PHASES

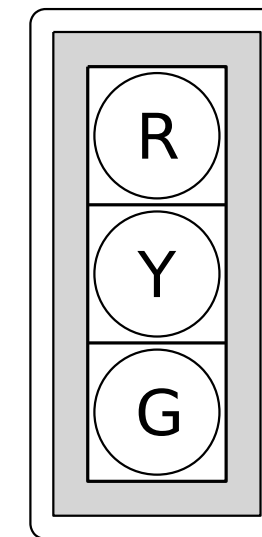
MAINLINE:
(1) PROTECTED/PERMISSIVE: 4-SECTION (FYA)
SIDE STREET:
(1) PERMISSIVE: 3-SECTION

RIGHT TURN PHASES

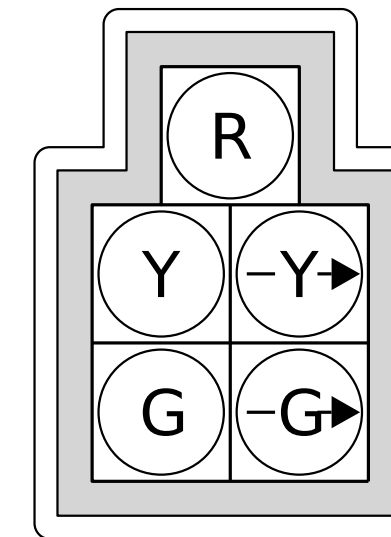
MAINLINE:
(1) PERMISSIVE: 3-SECTION
SIDE STREET:
(1) PROTECTED/PERMISSIVE: 5-SECTION



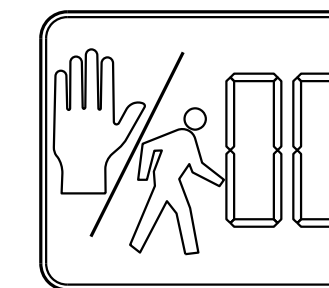
1



2,3,4,5
6,7



8



9,10,11,12
13,14

BARRIER

BARRIER

BARRIER

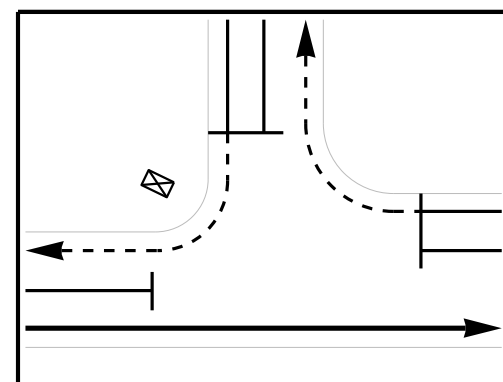
RING A

RING B

PHASE: 2

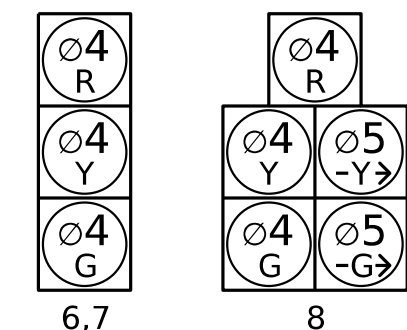


2,3



SIGNALS	Ø	LPI	GREEN ACTIVE	YELLOW CHANGE	RED CLEAR
2,3	Ø2		G	Y	R

PHASE: 4

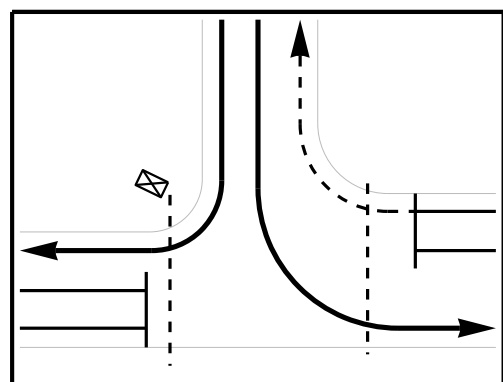


6,7

8



11,12,13,14



SIGNALS	Ø	LPI	GREEN ACTIVE	YELLOW CHANGE	RED CLEAR
6,7	Ø4	R	G	Y	R
8	Ø4	R	G	Y	R
11,12,13,14	Ø4P	W	W/FDW DW	DW	DW

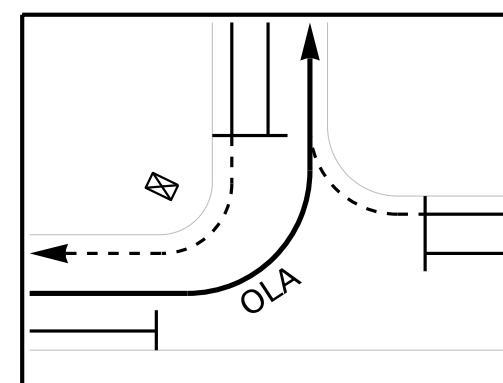
OVERLAPS

OVERLAP: A

FYA PERMISSIVE Ø: 6
FYA PROTECTED Ø: 5

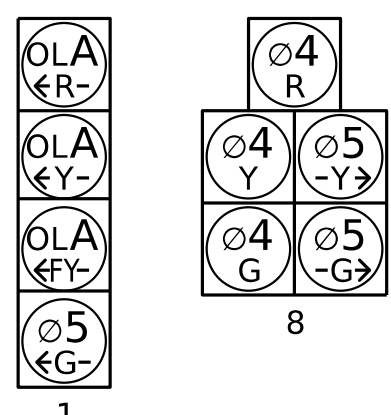


1

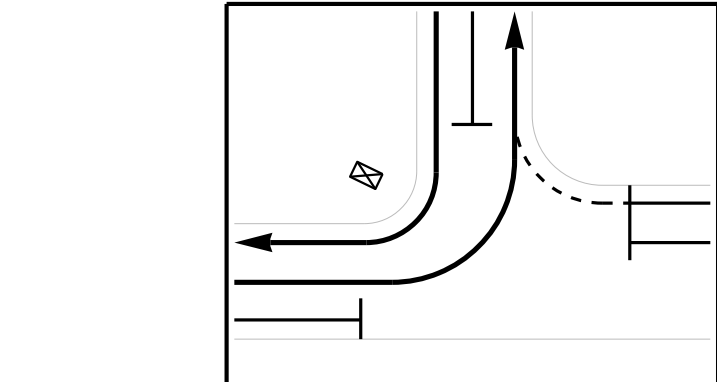


SIGNALS	Ø	LPI	GREEN ACTIVE	YELLOW CHANGE	RED CLEAR
1	ØLA	-	←FY-	←Y-	←R-

PHASE: 5



1



SIGNALS	Ø	LPI	GREEN ACTIVE	YELLOW CHANGE	RED CLEAR
1	Ø5		←G-	←Y-	←R-
8	Ø5		-G→	-Y→	-

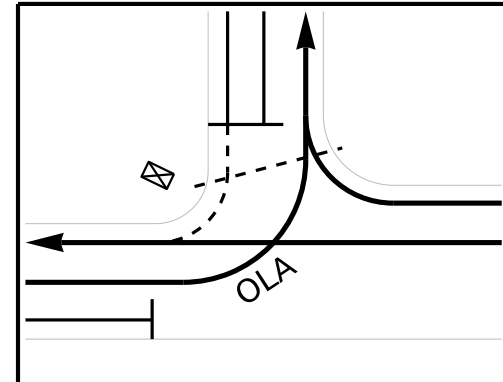
PHASE: 6 ACTIVE OVERLAP: A



4,5



9,10



SIGNALS	Ø	LPI	GREEN ACTIVE	YELLOW CHANGE	RED CLEAR
4,5	Ø6	-	G	Y	R
9,10	Ø6P	-	W/FDW DW	DW	DW

PHASE TIMING

PHASES	1	2	3	4	5	6	7	8
MIN GREEN		12		5	5	12		
ADVANCE WALK				3				
WALK				7		7		
DON'T WALK				15		15		
VEH EXT		2		2	2	2		
MAX 1		60		30	30	60		
MAX 2		60		30	30	60		
YELLOW		4		3	3	4		
RED		3		3	3	3		
MIN RECALL								
MAX RECALL								
SOFT RECALL		X				X		
PED RECALL								
REST IN WALK								
DUAL ENTRY								
MEMORY		L		NL	NL	L		

PREEMPTION

TYPE	EVP	EVP	EVP
CONFIRMATION SIGNAL	A	B	C
DWELL PHASES Ø	2,5	6	4
DWELL OVERLAPS			
PREEMPT MIN	10	10	10
PREEMPT MAX	60	60	60
EXIT PHASE Ø	2,5	2,6	4

OVERLAPS

OVERLAPS	A
SIGNALS	1
INDICATIONS	←R- ←Y- ←FY-
TYPE	FYA
INCLUDED Ø	
FYA PROTECTED Ø	5
FYA PERMISSIVE Ø	6
FYA START DELAY	2
LAG GREEN	0
YELLOW	-
RED	-



1

(THIS TABLE IS USED FOR THIS EXAMPLE)

OVERLAPS

OVERLAPS	A
SIGNALS	1
INDICATIONS	←FY-
TYPE	FYA
INCLUDED Ø	
FYA PROTECTED Ø	5
FYA PERMISSIVE Ø	6
FYA START DELAY	2
LAG GREEN	0
YELLOW	-
RED	-



1

(ALTERNATE CONFIGURATION OPTION)

DIFFERENT FYA CONFIGURATION OPTIONS