

# SPLIT PHASE OPERATION

(BASIC OPERATION)

# THREE PHASE OPERATION

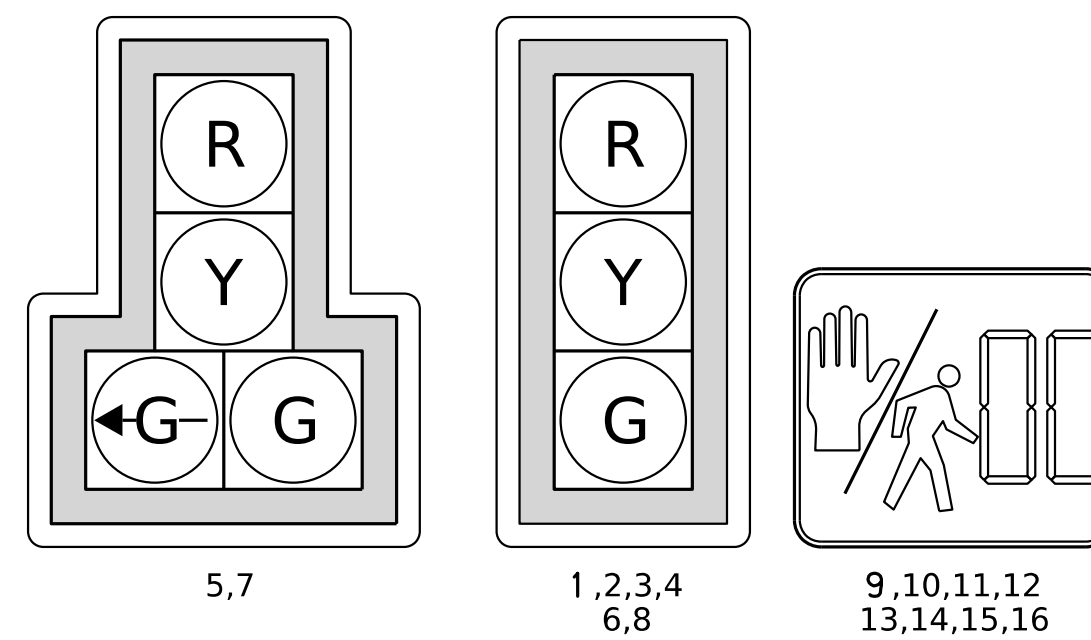
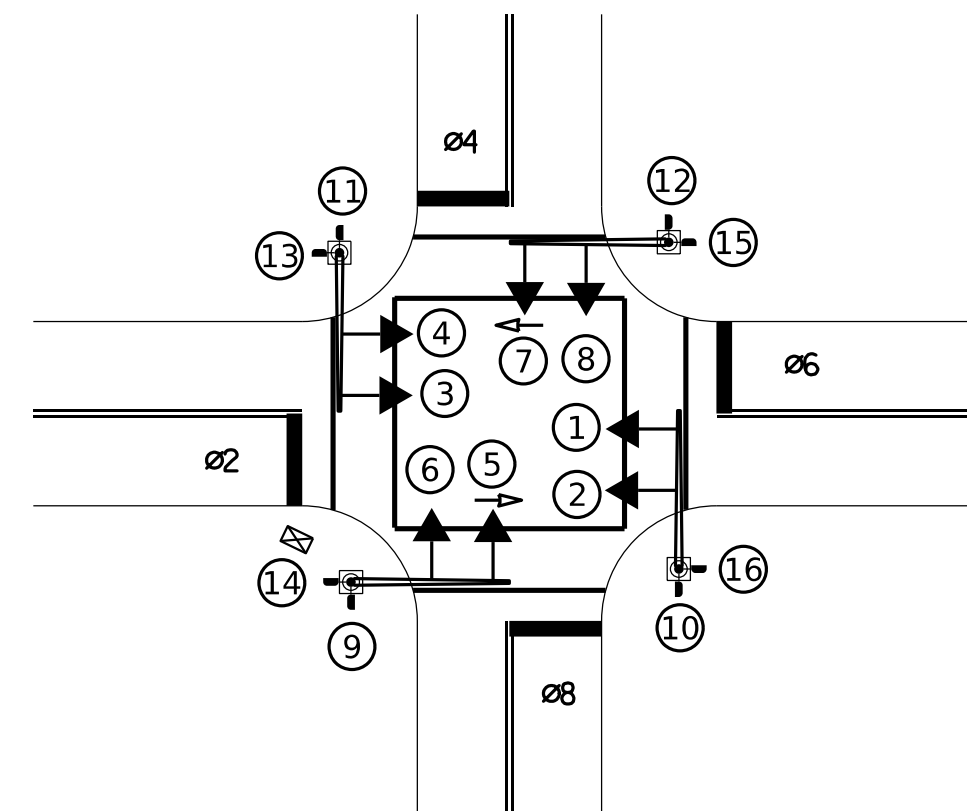
(4 VEHICLE PHASES)

## LEFT TURN PHASES

MAINLINE:  
(2) PERMISSIVE: 3-SECTION  
SIDE STREET:  
(2) SPLIT: 4-SECTION LEFT

## RIGHT TURN PHASES

MAINLINE:  
(2) PERMISSIVE: 3-SECTION  
SIDE STREET:  
(2) PERMISSIVE: 3-SECTION

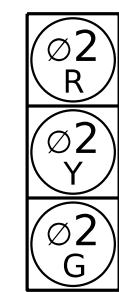


BARRIER BARRIER BARRIER BARRIER

RING A

RING B

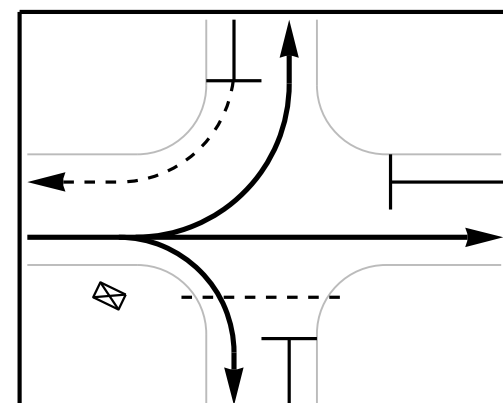
PHASE: 2



1,2

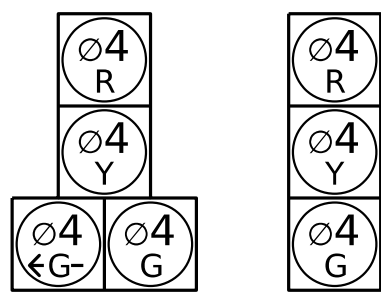


9,10



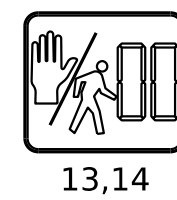
SIGNALS	Ø	LPI	GREEN ACTIVE	YELLOW CHANGE	RED CLEAR
1,2	Ø2	-	G	Y	R
9,10	Ø2P	-	W/FDW DW	DW	DW

PHASE: 4

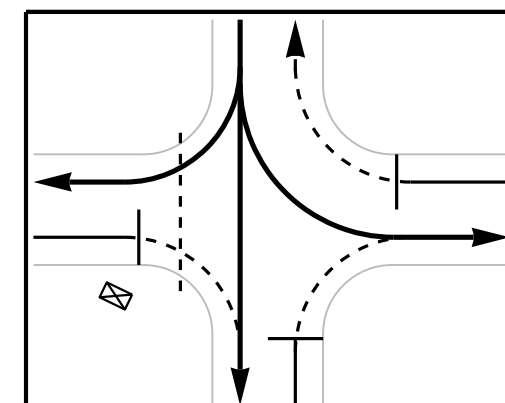


5

6

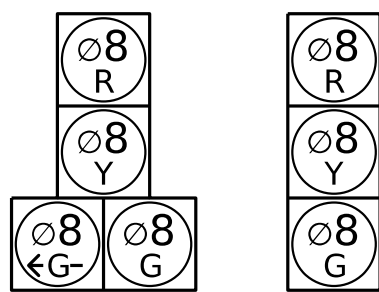


13,14



SIGNALS	Ø	LPI	GREEN ACTIVE	YELLOW CHANGE	RED CLEAR
5	Ø4	-	←G- G	Y	R
6	Ø4	-	G	Y	R
13,14	Ø4P	-	W/FDW DW	DW	DW

PHASE: 8

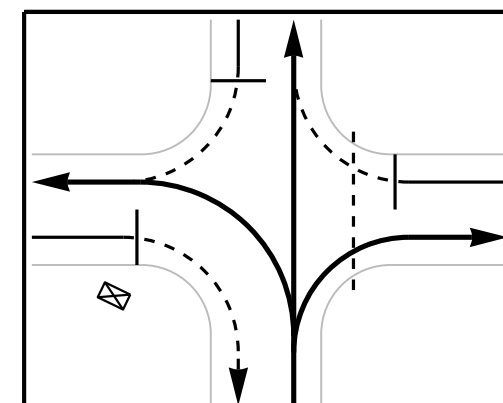


7

8

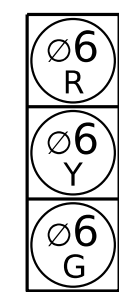


15,16



SIGNALS	Ø	LPI	GREEN ACTIVE	YELLOW CHANGE	RED CLEAR
7	Ø8	-	←G- G	Y	R
8	Ø8	-	G	Y	R
15,16	Ø8P	-	W/FDW DW	DW	DW

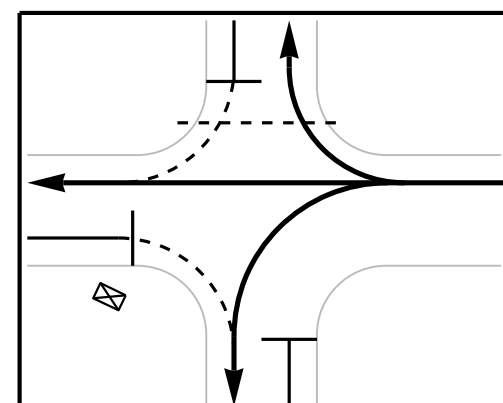
PHASE: 6



3,4



11,12



SIGNALS	Ø	LPI	GREEN ACTIVE	YELLOW CHANGE	RED CLEAR
3,4	Ø6	-	G	Y	R
11,12	Ø6P	-	W/FDW DW	DW	DW

PHASE TIMING

PHASES	1	2	3	4	5	6	7	8
MIN GREEN		12		5		12		5
ADVANCE WALK								
WALK		7		7		7		7
DON'T WALK		15		15		15		15
VEH EXT		2		2		2		2
MAX 1		60		30		60		30
MAX 2		60		30		60		30
YELLOW		4		3		4		3
RED		3		3		3		3
MIN RECALL								
MAX RECALL								
SOFT RECALL		X				X		
PED RECALL								
REST IN WALK								
DUAL ENTRY								
MEMORY		L		NL		L		NL

PREEMPTION

TYPE	EVP	EVP	EVP	EVP
CONFIRMATION SIGNAL	A	B	C	D
DWELL PHASES Ø	2	6	4	8
DWELL OVERLAPS				
PREEMPT MIN	10	10	10	10
PREEMPT MAX	60	60	60	60
EXIT PHASE Ø	2,6	2,6	4	8